

2025 *What's on*  
Lockyer Valley Art Gallery



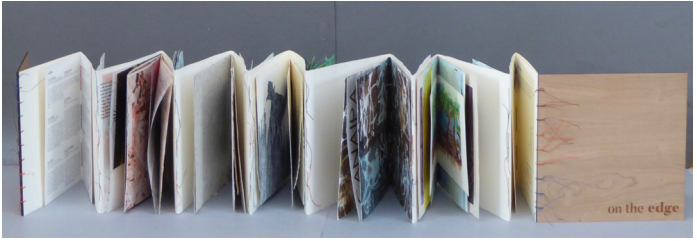
**Lockyer Valley**  
ART GALLERY



🖱 [www.lockyervalley.qld.gov.au/Galleries](http://www.lockyervalley.qld.gov.au/Galleries)

REGIONAL COUNCIL

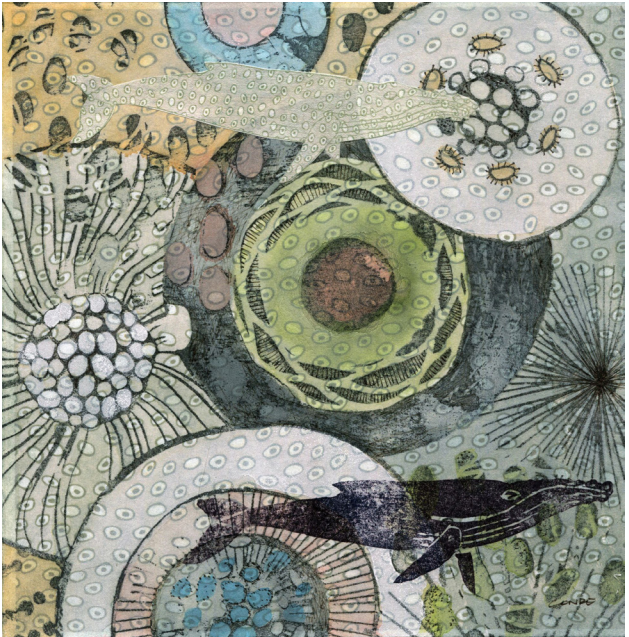
31 January to 16 March 2025



# Botanica: From Earth to Sea

Migaloo Press Artists Collective

*Botanica: From Earth to Sea* delves deep into the beauty and diversity of plant communities across South-East Queensland, as interpreted by the members of Migaloo Press Artist Collective. United by their love for printmaking and the natural world, the group brings together individual perspectives on the habitats and species that inspire them.



21 March to 4 May 2025



## Feng Shui 'n' Art

Debra Macpherson

This collection of varied artworks brings together a wide variety of the artists skill sets and creative inspirations.

*Feng Shui 'n' Art* has been inspired by Debra's passion for the creative arts and the ancient tradition of Feng Shui. Feng Shui has been used through generations by ancient and modern Chinese people to bring about the most auspicious functioning for the occupants of a building. By embracing the natural and man-made forms and structures along with the compass direction of each space, relevant colour, shapes to complement each room.

Audiences are invited to appreciate the artworks in the context of the ancient art of Feng Shui, or simply enjoy the works.

9 May to 22 June 2025



# Life Surprises

## Escarpment Artists

Life is unpredictable and full of surprises that can impact plans, dreams, goals and life trajectory.

This exhibition of the Escarpment Artists provides an interpretation of the ups and downs of life.

*Stories are an ingrained part of life everywhere, and in fact life is a series of successive stories with endless changing promises and surprises.*

- Rumi

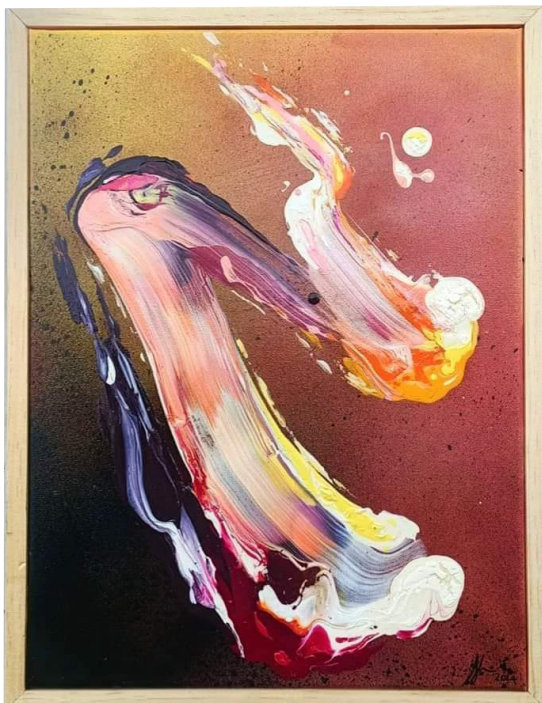
27 June to 17 August 2025

# As Above

AJ Gogas

*As Above* is a showcase of bold colour and rhythmic flow. AJ explores the intuitive process of somatic painting by creating colourful swirls of abstract art. Somatic painting is informed by body sensations and held emotions like heaviness in the chest, butterflies in the stomach and tingling fingers. The tension and release process results in inner landscapes of vibrant colour and movement. Aligning to the quality of being beyond the physical realm, *As Above* as a title embraces the otherworldly, inviting the viewer to truly experience the artwork.

What is your body telling you?



22 August to 12 October 2025



# Viewpoints

## High Schools of the Lockyer Valley

*Viewpoints* showcases student work from various high schools in the Lockyer Valley.

Featuring a diverse range of artwork, viewers are invited to perceive the works through the eyes of a teenager growing up in the Lockyer Valley.

Sometimes beautiful, sometimes challenging, the works demonstrate student responses to, and their interpretation of, the places, people and politics they encounter. This keenly anticipated exhibition is embraced by both the local community and visitors to our region.



17 October to 30 November 2025

# Nature's Canvas

## Nature's Canvas Group

The *Nature's Canvas* exhibition is the collaboration of three Somerset Artists: Marita Reynolds, *Wildlife artist*, Karen Leahy, *artist and retired Veterinarian*, and Cassandra Hodgins, *Botanical Illustrator*.

The artists share a special interest in preserving and protecting the natural environment as habitat for flora and fauna. Each artist brings their own unique style and message to their works, through their dedication and experiences. This exhibition highlights the diverse range of flora and fauna living in our environment, with a view to inform and inspire the audience to appreciate and conserve species, sometimes common, sometimes threatened, living in our own backyards.



5 December 2025 to 25 January 2026

# DistoMorph

Svenja

**Distortion**- the act of twisting or altering something out of its true, natural, or original state

**Morph**- to undergo transformation from an image of one object into that of another

*DistoMorph* is an exploration and celebration of colour and texture, line and shape, movement and growth, as witnessed in nature. Colour saturation / distortion / amplification takes the design inspirations to another plane, a parallel world, seen as though looking through a kaleidoscope or affected by LSD. Many of the original inspiration elements are tiny, but have become greatly enlarged, adding to the strangeness.





# Regional Arts Development Fund

The Regional Arts Development Fund (RADF) is delivered as a partnership between the Queensland Government through Arts Queensland and the Lockyer Valley Regional Council to support local arts and culture.

Council's RADF program promotes the role and value of arts, culture and heritage as key drivers of diverse and inclusive communities and strong regions. The program is a flexible fund that invests in local arts and cultural priorities.

Up to two funding rounds are offered each financial year. These rounds are advertised through the gallery newsletter, local and social media.

Sign up for the gallery newsletter and stay up-to-date with RADF rounds and funding opportunities.

For more information visit:

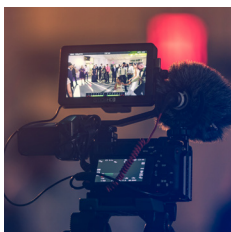
➤ [www.lockyervalley.qld.gov.au/RADF](http://www.lockyervalley.qld.gov.au/RADF)  
or email [Galleries@lvrc.qld.gov.au](mailto:Galleries@lvrc.qld.gov.au).



Newsletter signup



Website



The Regional Arts Development Fund is a partnership between the Queensland Government and Lockyer Valley Regional Council to support local arts and culture in regional Queensland.



# *Want to exhibit in 2026?*

Lockyer Valley Art Gallery invites applications from artists and curators to exhibit in 2026. Applications close August 2025.

Exhibitions at the Lockyer Valley Art Gallery are installed and maintained by the Libraries and Galleries Coordinator and team. Exhibitions are scheduled for six to eight weeks.

For more information about exhibiting, to join our mailing list or to apply, visit our website:

➤ [www.lockyervalley.qld.gov.au/Galleries](http://www.lockyervalley.qld.gov.au/Galleries)



## *Artist Register*

To stay informed of artist opportunities, funding and professional development, join our artist register.

You will receive updates of local and regional programs that may support your artistic endeavours.

➤ <https://forms.office.com/r/RBQV6YXjnL>



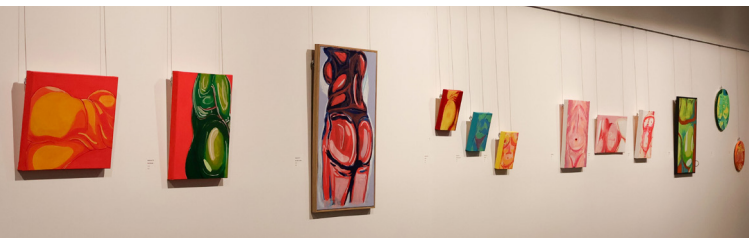
# Lockyer Valley Art Gallery

The Lockyer Valley Art Gallery is located in Gatton and is part of the Lockyer Valley Cultural Centre.

The Gallery presents an exciting program of changing exhibitions featuring local and visiting artists.

Purpose-built in 2009, the flexible gallery space is ideal for group and solo exhibitions. Regional highlights of the calendar include the annual high school exhibition supporting younger artists in the community, a local artist showcase as well as travelling exhibitions.

Entry to the Gallery is free.



**Images courtesy of artist unless specified. Images from front of brochure:**

Karen Howard, *Flower Fantasy*.

Marita Reynolds, *Kookaburras*.

Migaloo Press Artists Collective, *On the Edge: Collaborative Artist Book*.

Jen Conde, *Whale Migration*.

Debra Macpherson, *Angelface*.

Karen Howard, *The Fiery Wedding*.

Linda Abraham, *Working Christmas*.

AJ Gogas, *Calypso*.

*Togetherness* exhibition by High Schools of the Lockyer Valley at Lockyer Valley Art Gallery, 2024.

*Togetherness* exhibition by High Schools of the Lockyer Valley at Lockyer Valley Art Gallery, 2024.

Cassandra Hodgins, *Fairy Wren*.

Karen Leahy, *Possum*.

Marita Reynolds, *Platypus*.

Svenja, *Psychoseas*.

Kushagra Kevat, *Happy World Photography Day*, 2018. Photograph.

VadimGuzhva, *Ballet Training of Group of Young Girls Indoors*. Photograph.

Deeana Arts, *Shallow Focus Photo of Paint Brushes*, 2017. Photograph.

*Beyond Bounds* exhibition by Darling Downs Textile Art Group at Lockyer Valley Art Gallery, 2024.

*My Body of Work* exhibition by Sarah Seletto at Lockyer Valley Art Gallery, 2024.

*Different Strokes and Encounters* exhibition by Kevin Gillum and Richard Blundell at Lockyer Valley Art Gallery, 2023.

# Lockyer Valley ART GALLERY

Lockyer Valley Cultural Centre

34 Lake Apex Drive, Gatton

**Phone:** (07) 5466 3434

**Email:** Galleries@lvrc.qld.gov.au

**Open:** Monday to Friday 9am — 5pm

Saturday and Sunday 9am — 4pm

Current as of 1 January 2025

