



REGIONAL COUNCIL

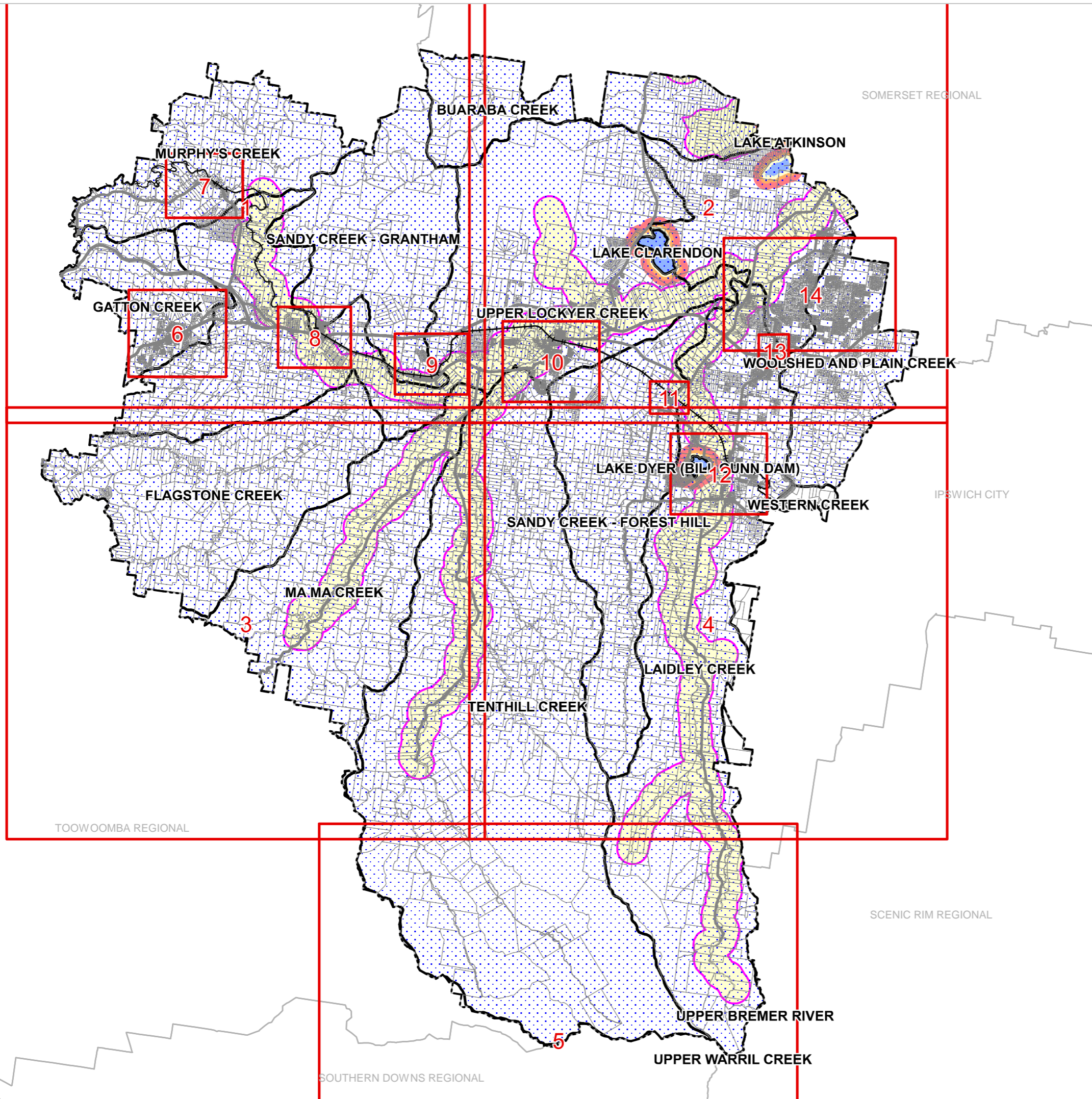
OM12B Waterways and water resource catchment - water resource catchment overlay map

Water Resources

- Bulk water supply storage
- Bulk water supply storage buffer (200m)
- Bulk water supply storage buffer (400m)
- Bulk water supply storage buffer (800m)
- Water supply buffer area
- Lockyer Creek water resource catchment
- Lockyer Creek water sub-catchments

Other Features

- Major Road
- Railway Network
- Property Boundary
- Local Government Boundary



NOTE

Refer to online or electronic mapping where layers overlap or labels obstruct the data on the map.

MAP INFORMATION

Based on or contains data sourced from the State Government which gives no warranty in relation to the data (including accuracy, reliability, completeness or suitability) and accepts no liability (including without limitation, liability in negligence) for any loss, damage or costs (including consequential damage) relating to any use of the data.

DATA SOURCES

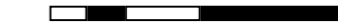
Cadastral data weekly - whole of State Queensland, Rail network - Queensland, Queensland roads and tracks, State controlled roads surveyed centreline - Queensland; © State of Queensland (Department of Resources) 2023. Water plan catchments - Queensland, Lockyer Creek water sub-catchments; © State of Queensland (Department of Environment and Science) 2020. Geocentric Datum of Australia (GDA2020 / MGA zone 56)



Commencement Date: 22 July 2024

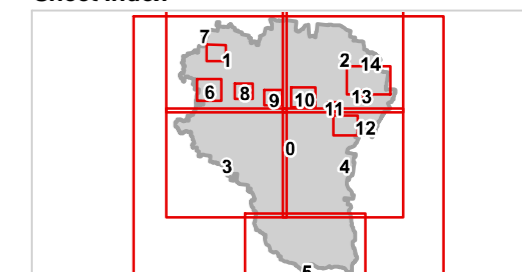
Approx Scale @ A3: 1:250,000

0 10



kilometres

Sheet Index





REGIONAL COUNCIL

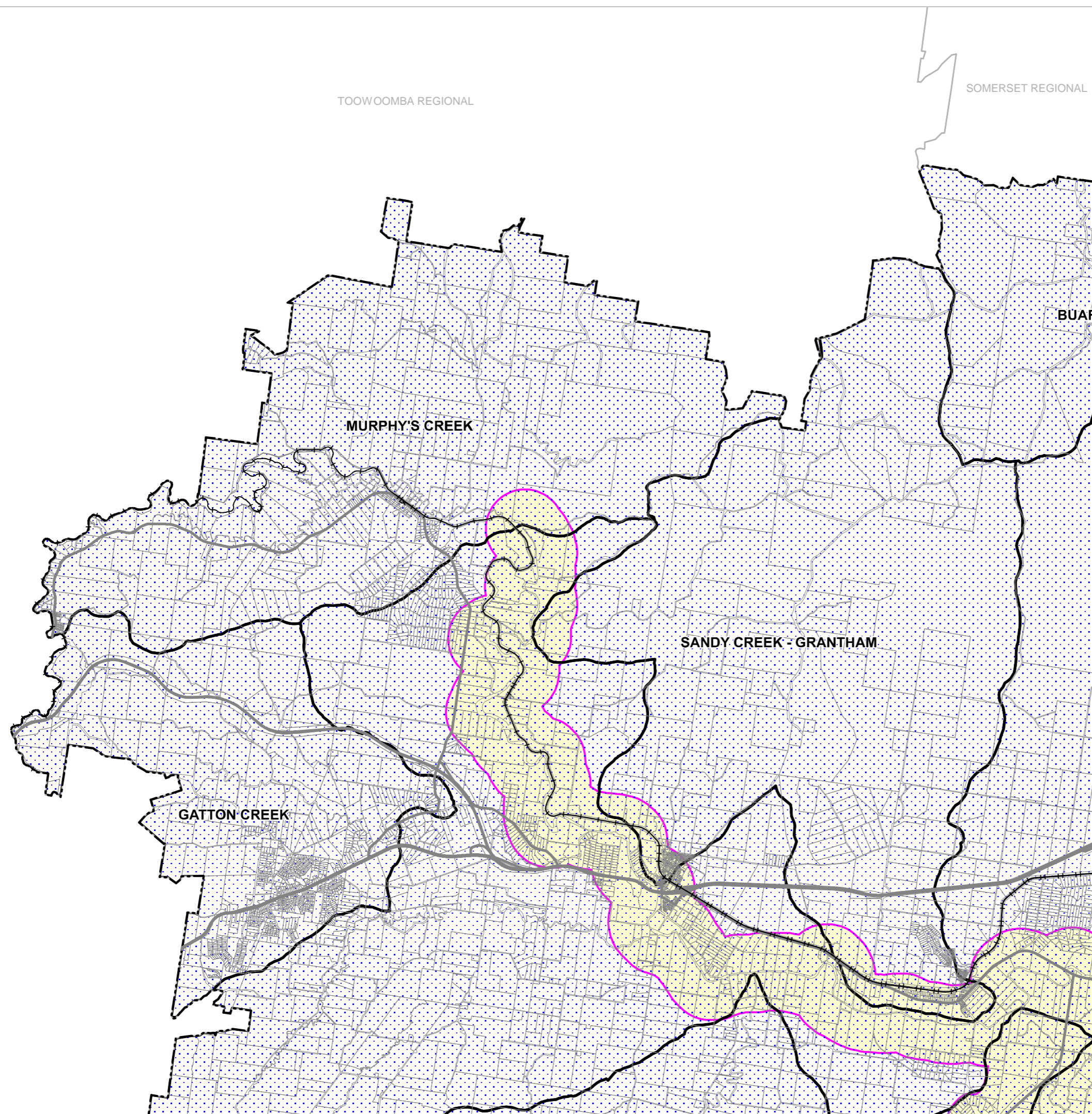
OM12B Waterways and water resource catchment - water resource catchment overlay map

Water Resources

- Bulk water supply storage
- Bulk water supply storage buffer (200m)
- Bulk water supply storage buffer (400m)
- Bulk water supply storage buffer (800m)
- Water supply buffer area
- Lockyer Creek water resource catchment
- Lockyer Creek water sub-catchments

Other Features

- Major Road
- Railway Network
- Property Boundary
- Local Government Boundary



NOTE

Refer to online or electronic mapping where layers overlap or labels obstruct the data on the map.

MAP INFORMATION

Based on or contains data sourced from the State Government which gives no warranty in relation to the data (including accuracy, reliability, completeness or suitability) and accepts no liability (including without limitation, liability in negligence) for any loss, damage or costs (including consequential damage) relating to any use of the data.

DATA SOURCES

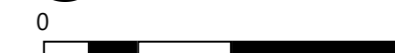
Cadastral data weekly - whole of State Queensland, Rail network - Queensland, Queensland roads and tracks, State controlled roads surveyed centreline - Queensland; © State of Queensland (Department of Resources) 2023. Water plan catchments - Queensland, Lockyer Creek water sub-catchments; © State of Queensland (Department of Environment and Science) 2020.

Geocentric Datum of Australia (GDA2020 / MGA zone 56)

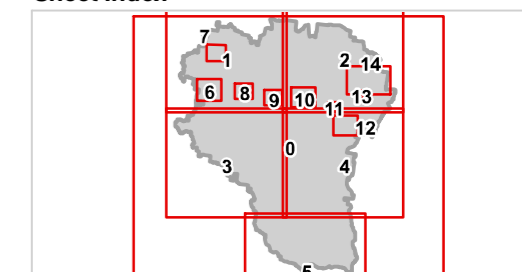


Commencement Date: 22 July 2024

Approx Scale @ A3: 1:100,000



Sheet Index





REGIONAL COUNCIL

SOMERSET REGIONAL

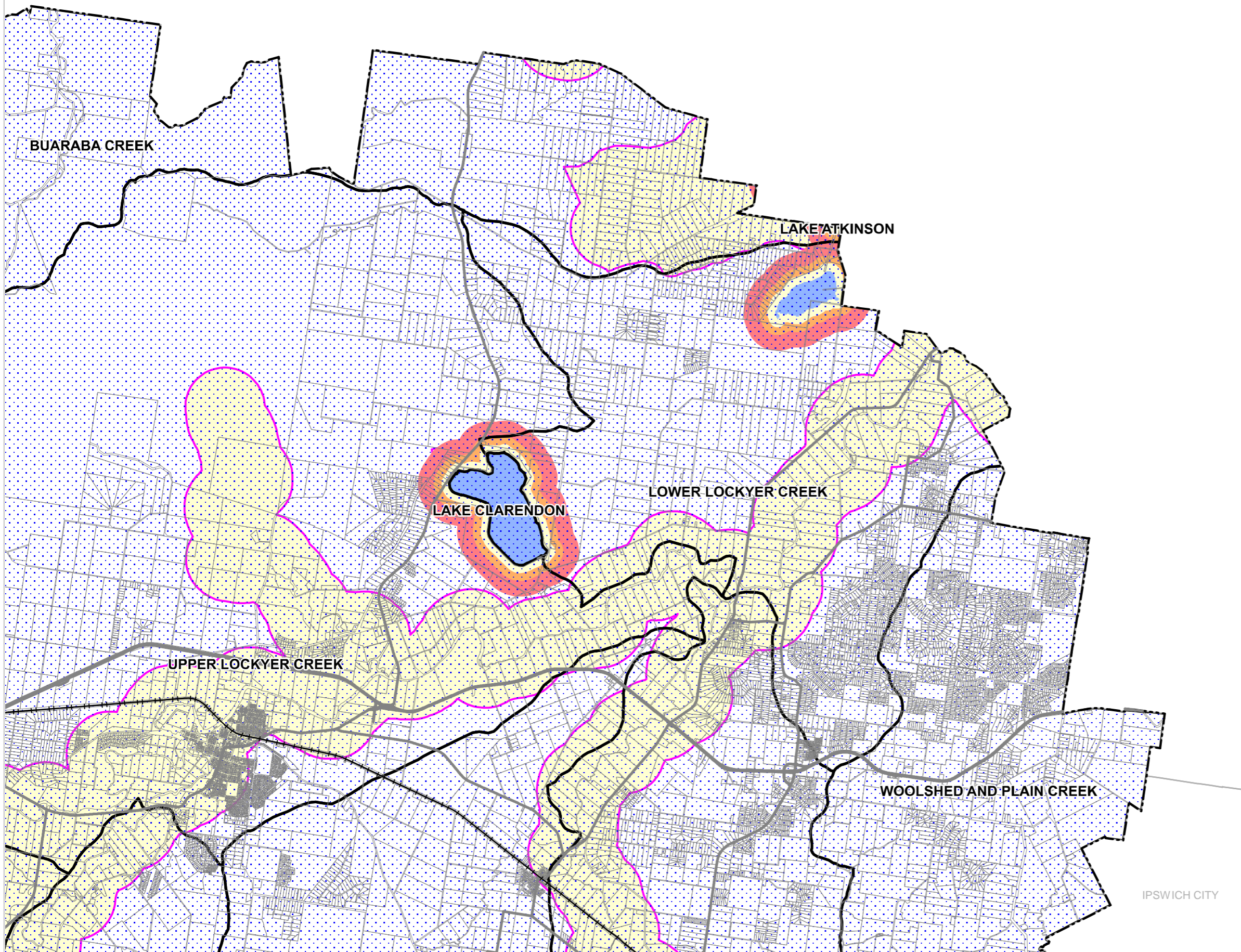
OM12B Waterways and water resource catchment - water resource catchment overlay map

Water Resources

- Bulk water supply storage
- Bulk water supply storage buffer (200m)
- Bulk water supply storage buffer (400m)
- Bulk water supply storage buffer (800m)
- Water supply buffer area
- Lockyer Creek water resource catchment
- Lockyer Creek water sub-catchments

Other Features

- Major Road
- Railway Network
- Property Boundary
- Local Government Boundary



NOTE

Refer to online or electronic mapping where layers overlap or labels obstruct the data on the map.

MAP INFORMATION

Based on or contains data sourced from the State Government which gives no warranty in relation to the data (including accuracy, reliability, completeness or suitability) and accepts no liability (including without limitation, liability in negligence) for any loss, damage or costs (including consequential damage) relating to any use of the data.

DATA SOURCES

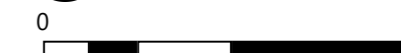
Cadastral data weekly - whole of State Queensland, Rail network - Queensland, Queensland roads and tracks, State controlled roads surveyed centreline - Queensland: © State of Queensland (Department of Resources) 2023. Water plan catchments - Queensland, Lockyer Creek water sub-catchments: © State of Queensland (Department of Environment and Science) 2020.

Geocentric Datum of Australia (GDA2020 / MGA zone 56)

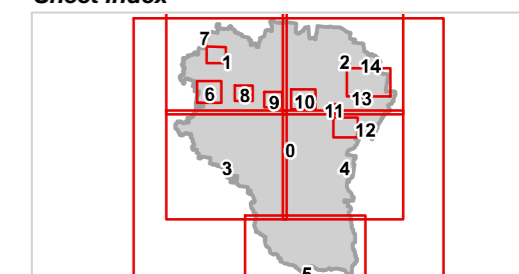


Commencement Date: 22 July 2024

Approx Scale @ A3: 1:100,000



Sheet Index



IPSWICH CITY



REGIONAL COUNCIL

OM12B Waterways and water resource catchment - water resource catchment overlay map

Water Resources

- Bulk water supply storage
- Bulk water supply storage buffer (200m)
- Bulk water supply storage buffer (400m)
- Bulk water supply storage buffer (800m)
- Water supply buffer area
- Lockyer Creek water resource catchment
- Lockyer Creek water sub-catchments

Other Features

- Major Road
- Railway Network
- Property Boundary
- Local Government Boundary

NOTE

Refer to online or electronic mapping where layers overlap or labels obstruct the data on the map.

MAP INFORMATION

Based on or contains data sourced from the State Government which gives no warranty in relation to the data (including accuracy, reliability, completeness or suitability) and accepts no liability (including without limitation, liability in negligence) for any loss, damage or costs (including consequential damage) relating to any use of the data.
© Copyright Lockyer Valley Regional Council 2024

DATA SOURCES

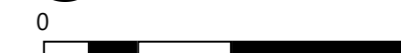
Cadastral data weekly - whole of State Queensland, Rail network - Queensland, Queensland roads and tracks, State controlled roads surveyed centreline - Queensland; © State of Queensland (Department of Resources) 2023. Water plan catchments - Queensland, Lockyer Creek water sub-catchments; © State of Queensland (Department of Environment and Science) 2020.

Geocentric Datum of Australia (GDA2020 / MGA zone 56)

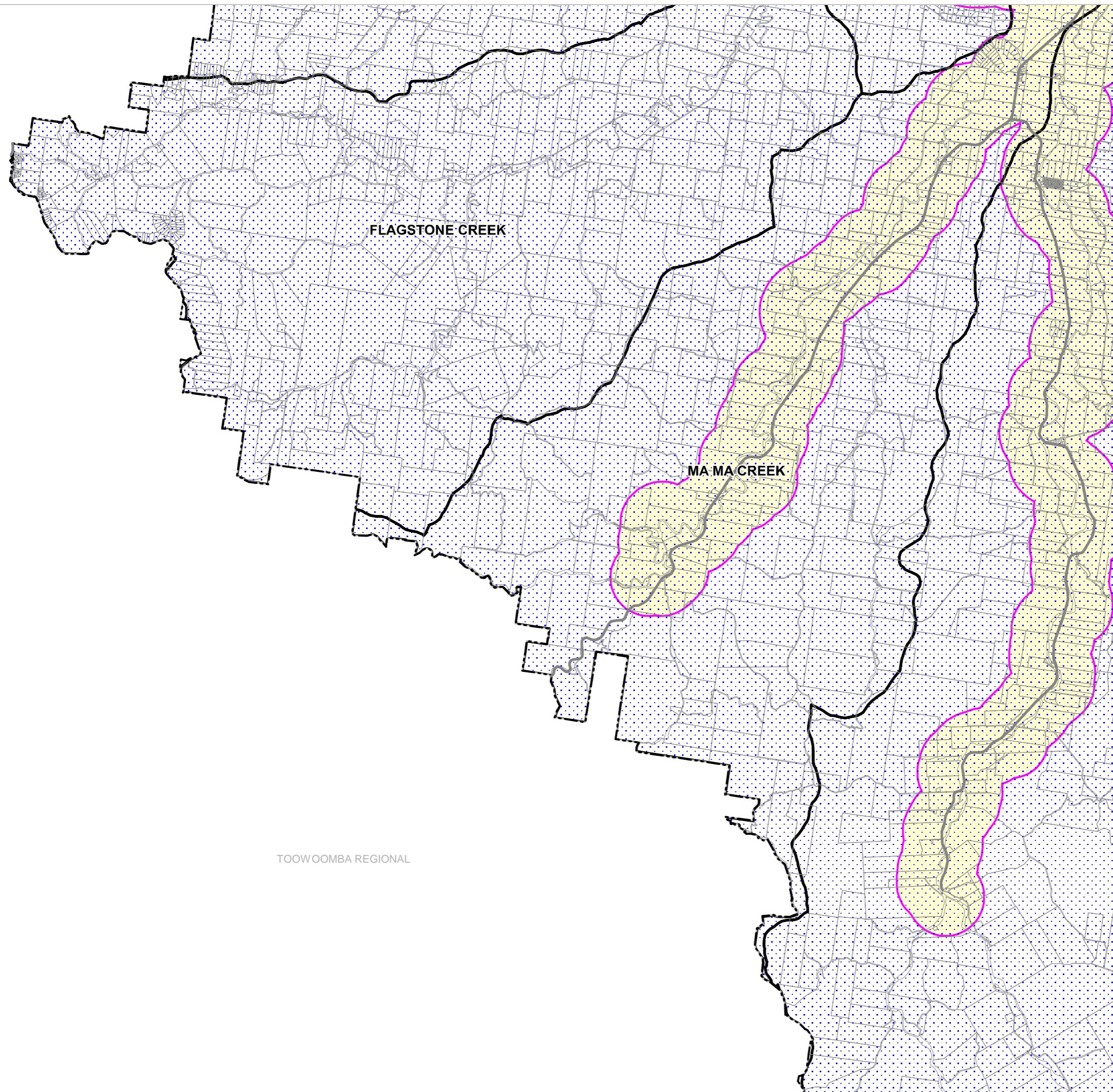
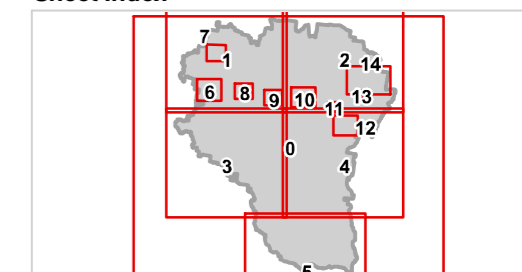


Commencement Date: 22 July 2024

Approx Scale @ A3: 1:100,000



Sheet Index



TOOWOOMBA REGIONAL



REGIONAL COUNCIL

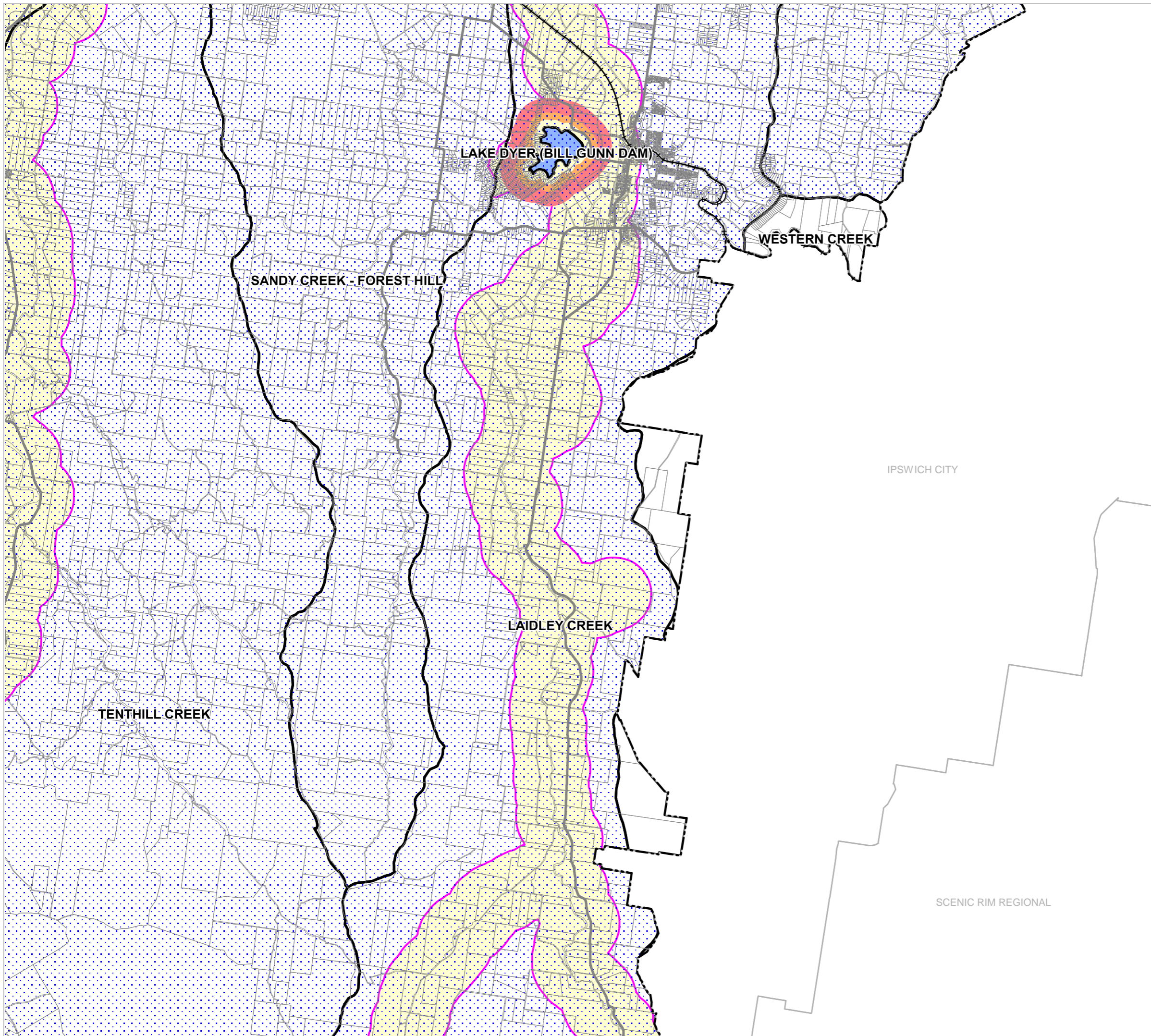
OM12B Waterways and water resource catchment - water resource catchment overlay map

Water Resources

- Bulk water supply storage
- Bulk water supply storage buffer (200m)
- Bulk water supply storage buffer (400m)
- Bulk water supply storage buffer (800m)
- Water supply buffer area
- Lockyer Creek water resource catchment
- Lockyer Creek water sub-catchments

Other Features

- Major Road
- Railway Network
- Property Boundary
- Local Government Boundary



NOTE

Refer to online or electronic mapping where layers overlap or labels obstruct the data on the map.

MAP INFORMATION

Based on or contains data sourced from the State Government which gives no warranty in relation to the data (including accuracy, reliability, completeness or suitability) and accepts no liability (including without limitation, liability in negligence) for any loss, damage or costs (including consequential damage) relating to any use of the data.
© Copyright Lockyer Valley Regional Council 2024

DATA SOURCES

Cadastral data weekly - whole of State Queensland, Rail network - Queensland, Queensland roads and tracks, State controlled roads surveyed centreline - Queensland; © State of Queensland (Department of Resources) 2023. Water plan catchments - Queensland, Lockyer Creek water sub-catchments: © State of Queensland (Department of Environment and Science) 2020.

Geocentric Datum of Australia (GDA2020 / MGA zone 56)

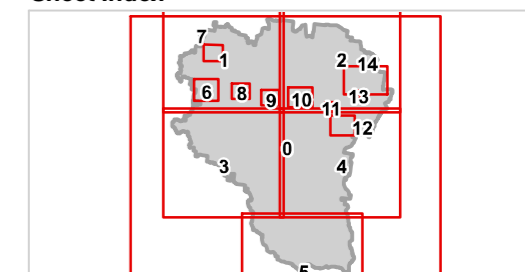


Commencement Date: 22 July 2024

Approx Scale @ A3: 1:100,000



Sheet Index





REGIONAL COUNCIL

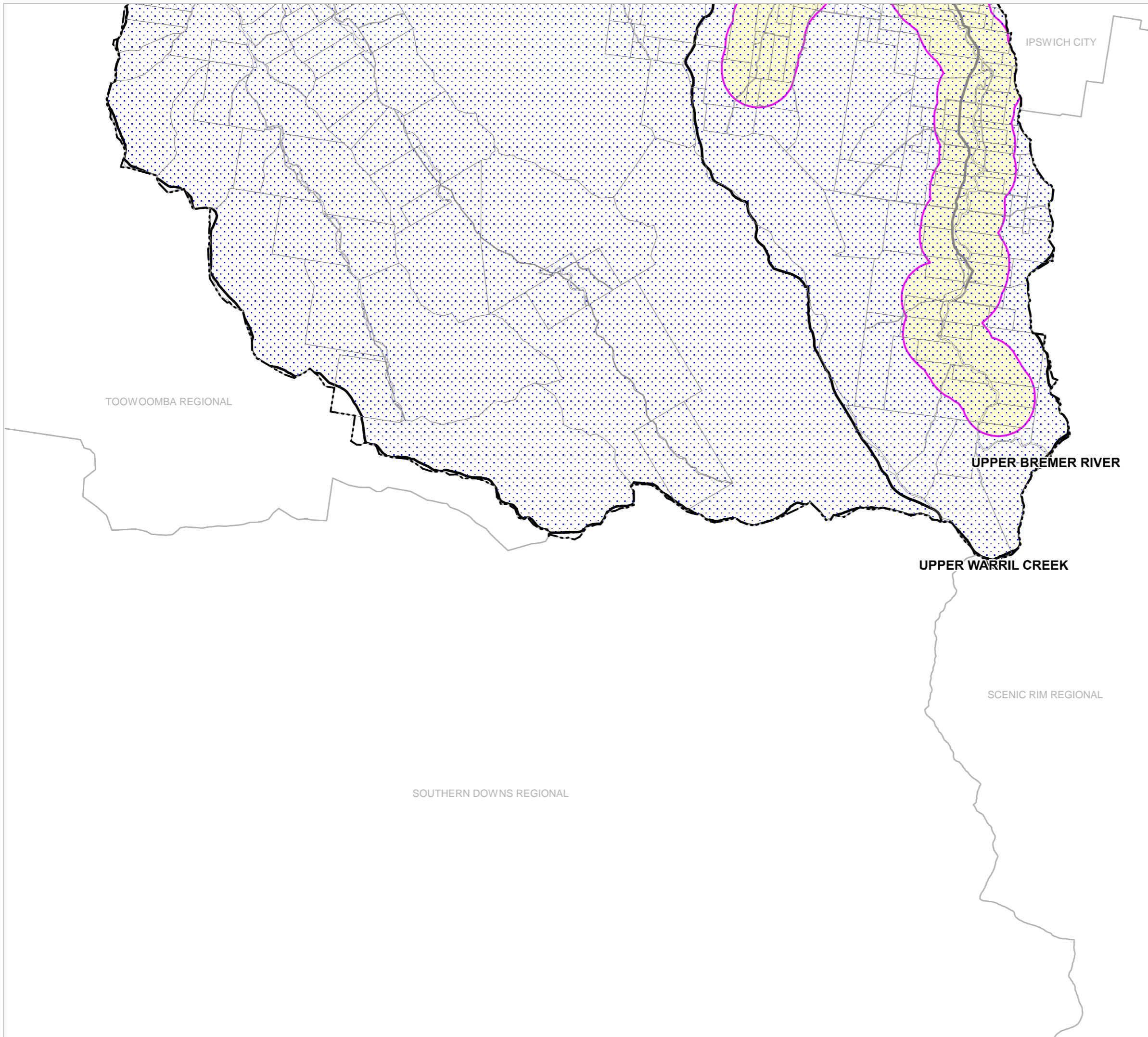
OM12B Waterways and water resource catchment - water resource catchment overlay map

Water Resources

- Bulk water supply storage
- Bulk water supply storage buffer (200m)
- Bulk water supply storage buffer (400m)
- Bulk water supply storage buffer (800m)
- Water supply buffer area
- Lockyer Creek water resource catchment
- Lockyer Creek water sub-catchments

Other Features

- Major Road
- Railway Network
- Property Boundary
- Local Government Boundary



NOTE

Refer to online or electronic mapping where layers overlap or labels obstruct the data on the map.

MAP INFORMATION

Based on or contains data sourced from the State Government which gives no warranty in relation to the data (including accuracy, reliability, completeness or suitability) and accepts no liability (including without limitation, liability in negligence) for any loss, damage or costs (including consequential damage) relating to any use of the data.

DATA SOURCES

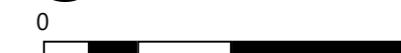
Cadastral data weekly - whole of State Queensland, Rail network - Queensland, Queensland roads and tracks, State controlled roads surveyed centreline - Queensland: © State of Queensland (Department of Resources) 2023. Water plan catchments - Queensland, Lockyer Creek water sub-catchments: © State of Queensland (Department of Environment and Science) 2020.

Geocentric Datum of Australia (GDA2020 / MGA zone 56)

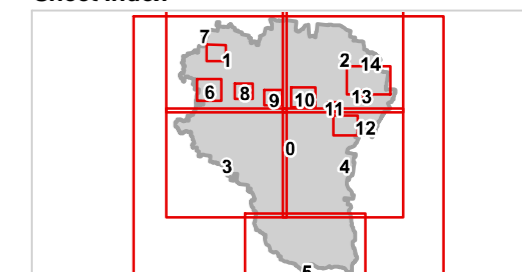


Commencement Date: 22 July 2024

Approx Scale @ A3: 1:100,000



Sheet Index





REGIONAL COUNCIL

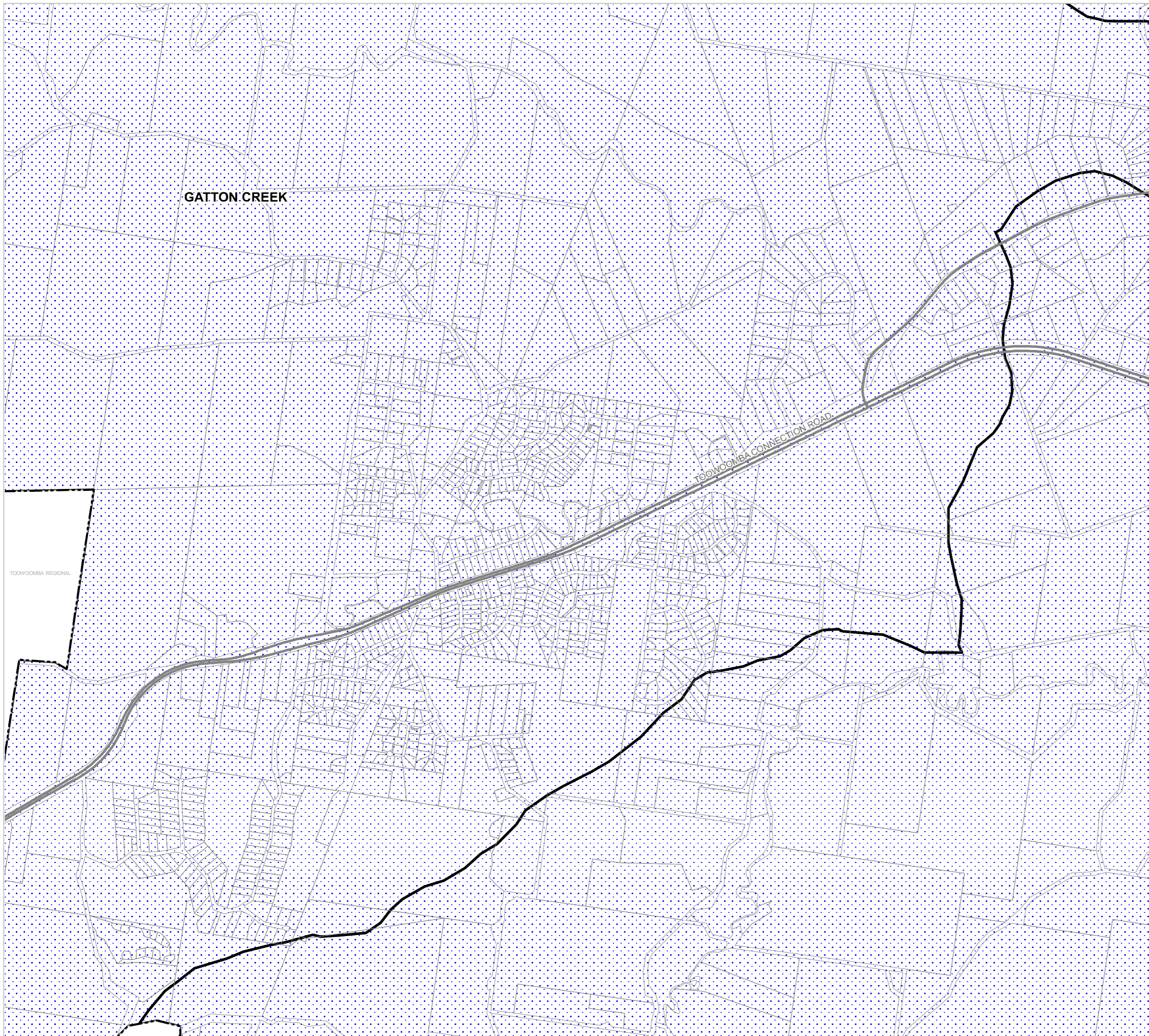
OM12B Waterways and water resource catchment - water resource catchment overlay map

Water Resources

- Bulk water supply storage
- Bulk water supply storage buffer (200m)
- Bulk water supply storage buffer (400m)
- Bulk water supply storage buffer (800m)
- Water supply buffer area
- Lockyer Creek water resource catchment
- Lockyer Creek water sub-catchments

Other Features

- Major Road
- Railway Network
- Property Boundary
- Local Government Boundary



NOTE

Refer to online or electronic mapping where layers overlap or labels obstruct the data on the map.

MAP INFORMATION

Based on or contains data sourced from the State Government which gives no warranty in relation to the data (including accuracy, reliability, completeness or suitability) and accepts no liability (including without limitation, liability in negligence) for any loss, damage or costs (including consequential damage) relating to any use of the data.
© Copyright Lockyer Valley Regional Council 2024

DATA SOURCES

Cadastral data weekly - whole of State Queensland, Rail network - Queensland, Queensland roads and tracks, State controlled roads surveyed centreline - Queensland; © State of Queensland (Department of Resources) 2023. Water plan catchments - Queensland, Lockyer Creek water sub-catchments; © State of Queensland (Department of Environment and Science) 2020.

Geocentric Datum of Australia (GDA2020 / MGA zone 56)



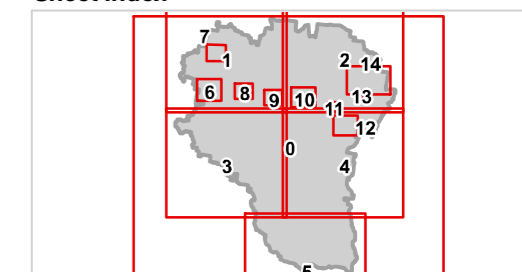
Commencement Date: 22 July 2024

Approx Scale @ A3: 1:20,000



kilometres

Sheet Index





REGIONAL COUNCIL

OM12B Waterways and water resource catchment - water resource catchment overlay map

Water Resources

- Bulk water supply storage
- Bulk water supply storage buffer (200m)
- Bulk water supply storage buffer (400m)
- Bulk water supply storage buffer (800m)
- Water supply buffer area
- Lockyer Creek water resource catchment
- Lockyer Creek water sub-catchments

Other Features

- Major Road
- Railway Network
- Property Boundary
- Local Government Boundary



NOTE

Refer to online or electronic mapping where layers overlap or labels obstruct the data on the map.

MAP INFORMATION

Based on or contains data sourced from the State Government which gives no warranty in relation to the data (including accuracy, reliability, completeness or suitability) and accepts no liability (including without limitation, liability in negligence) for any loss, damage or costs (including consequential damage) relating to any use of the data.
© Copyright Lockyer Valley Regional Council 2024

DATA SOURCES

Cadastral data weekly - whole of State Queensland, Rail network - Queensland, Queensland roads and tracks, State controlled roads surveyed centreline - Queensland: © State of Queensland (Department of Resources) 2023. Water plan catchments - Queensland, Lockyer Creek water sub-catchments: © State of Queensland (Department of Environment and Science) 2020.

Geocentric Datum of Australia (GDA2020 / MGA zone 56)

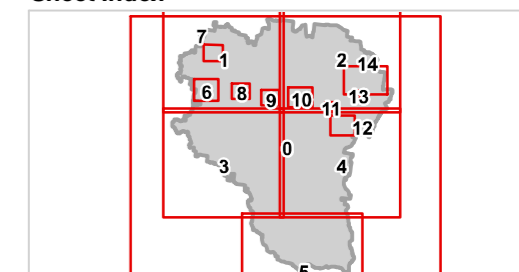


Commencement Date: 22 July 2024

Approx Scale @ A3: 1:15,000



Sheet Index





REGIONAL COUNCIL

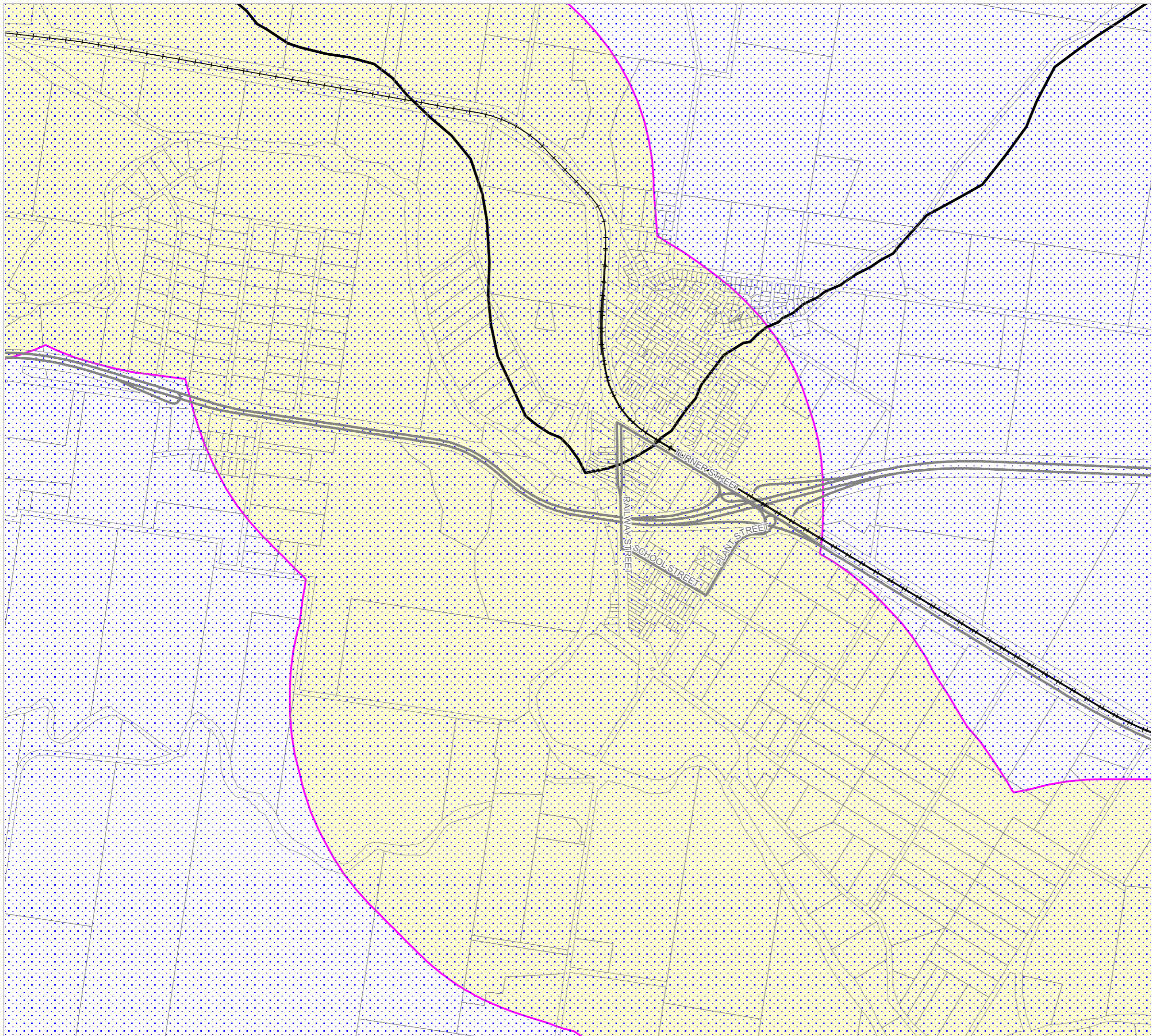
OM12B Waterways and water resource catchment - water resource catchment overlay map

Water Resources

- Bulk water supply storage
- Bulk water supply storage buffer (200m)
- Bulk water supply storage buffer (400m)
- Bulk water supply storage buffer (800m)
- Water supply buffer area
- Lockyer Creek water resource catchment
- Lockyer Creek water sub-catchments

Other Features

- Major Road
- Railway Network
- Property Boundary
- Local Government Boundary



NOTE

Refer to online or electronic mapping where layers overlap or labels obstruct the data on the map.

MAP INFORMATION

Based on or contains data sourced from the State Government which gives no warranty in relation to the data (including accuracy, reliability, completeness or suitability) and accepts no liability (including without limitation, liability in negligence) for any loss, damage or costs (including consequential damage) relating to any use of the data.
© Copyright Lockyer Valley Regional Council 2024

DATA SOURCES

Cadastral data weekly - whole of State Queensland, Rail network - Queensland, Queensland roads and tracks, State controlled roads surveyed centreline - Queensland: © State of Queensland (Department of Resources) 2023. Water plan catchments - Queensland, Lockyer Creek water sub-catchments: © State of Queensland (Department of Environment and Science) 2020.

Geocentric Datum of Australia (GDA2020 / MGA zone 56)



Commencement Date: 22 July 2024

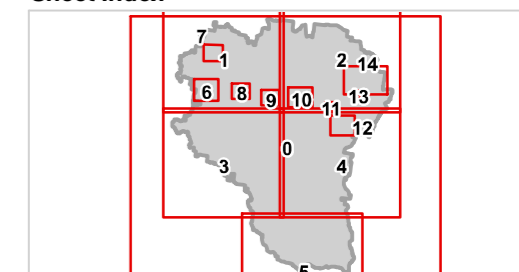
Approx Scale @ A3: 1:15,000

0 0.5



kilometres

Sheet Index













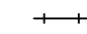


REGIONAL COUNCIL

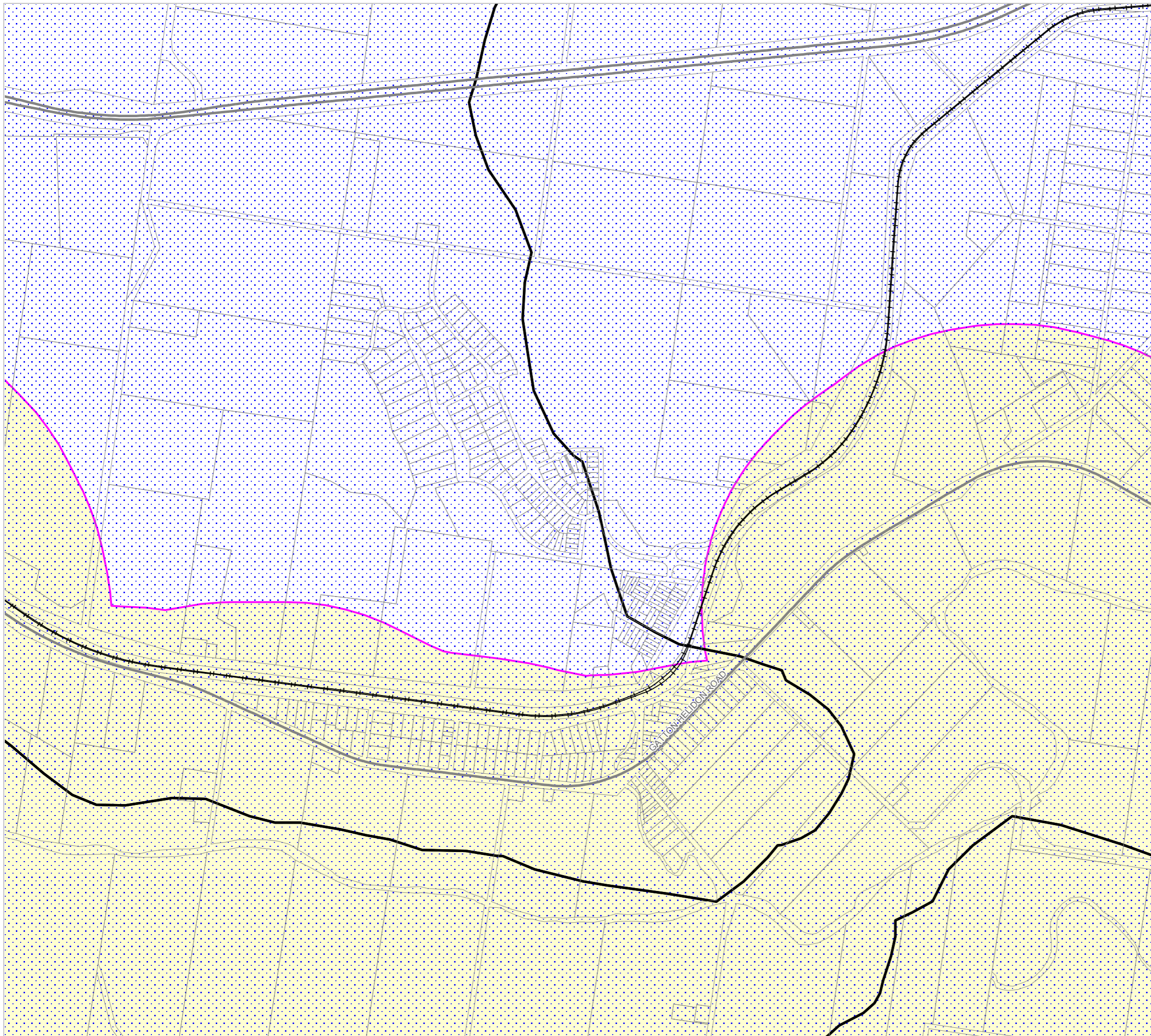
OM12B Waterways and water resource catchment - water resource catchment overlay map

Water Resources

-  Bulk water supply storage
-  Bulk water supply storage buffer (200m)
-  Bulk water supply storage buffer (400m)
-  Bulk water supply storage buffer (800m)
-  Water supply buffer area
-  Lockyer Creek water resource catchment
-  Lockyer Creek water sub-catchments

Other Features

-  Major Road
-  Railway Network
-  Property Boundary
-  Local Government Boundary



NOTE

Refer to online or electronic mapping where layers overlap or labels obstruct the data on the map.

MAP INFORMATION

Based on or contains data sourced from the State Government which gives no warranty in relation to the data (including accuracy, reliability, completeness or suitability) and accepts no liability (including without limitation, liability in negligence) for any loss, damage or costs (including consequential damage) relating to any use of the data.
© Copyright Lockyer Valley Regional Council 2024

DATA SOURCES

Cadastral data weekly - whole of State Queensland, Rail network - Queensland, Queensland roads and tracks, State controlled roads surveyed centreline - Queensland: © State of Queensland (Department of Resources) 2023. Water plan catchments - Queensland, Lockyer Creek water sub-catchments: © State of Queensland (Department of Environment and Science) 2020.

Geocentric Datum of Australia (GDA2020 / MGA zone 56)



Commencement Date: 22 July 2024

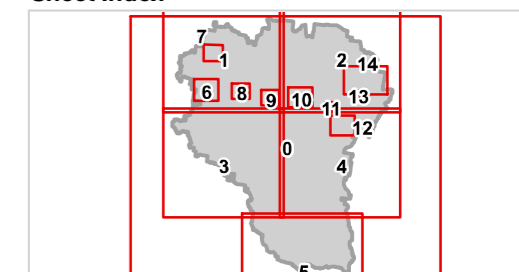
Approx Scale @ A3: 1:15,000

0 0.5



kilometres

Sheet Index





REGIONAL COUNCIL

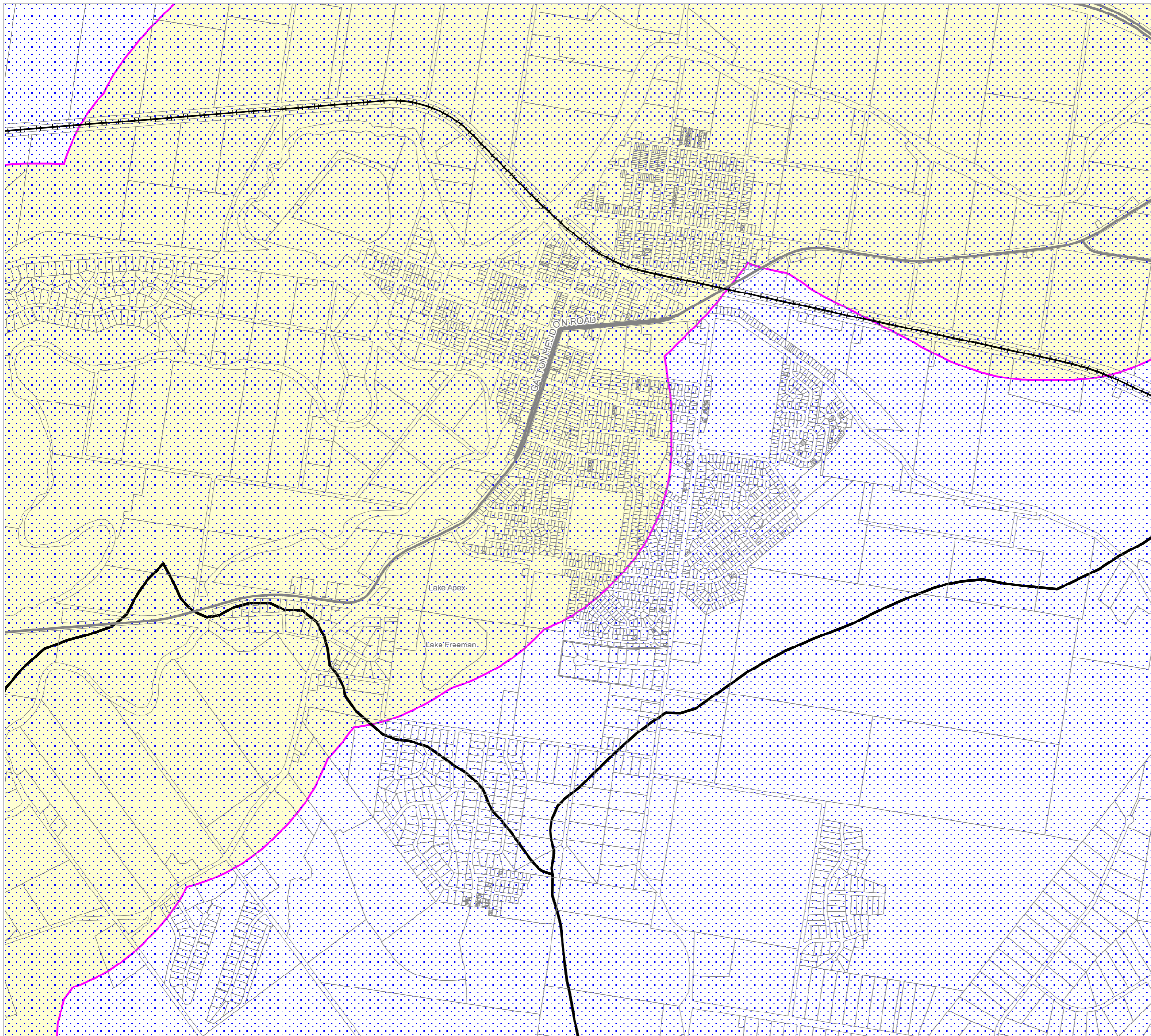
OM12B Waterways and water resource catchment - water resource catchment overlay map

Water Resources

- Bulk water supply storage
- Bulk water supply storage buffer (200m)
- Bulk water supply storage buffer (400m)
- Bulk water supply storage buffer (800m)
- Water supply buffer area
- Lockyer Creek water resource catchment
- Lockyer Creek water sub-catchments

Other Features

- Major Road
- Railway Network
- Property Boundary
- Local Government Boundary



NOTE

Refer to online or electronic mapping where layers overlap or labels obstruct the data on the map.

MAP INFORMATION

Based on or contains data sourced from the State Government which gives no warranty in relation to the data (including accuracy, reliability, completeness or suitability) and accepts no liability (including without limitation, liability in negligence) for any loss, damage or costs (including consequential damage) relating to any use of the data.
© Copyright Lockyer Valley Regional Council 2024

DATA SOURCES

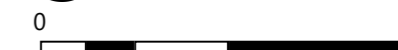
Cadastral data weekly - whole of State Queensland, Rail network - Queensland, Queensland roads and tracks, State controlled roads surveyed centreline - Queensland; © State of Queensland (Department of Resources) 2023. Water plan catchments - Queensland, Lockyer Creek water sub-catchments; © State of Queensland (Department of Environment and Science) 2020.

Geocentric Datum of Australia (GDA2020 / MGA zone 56)



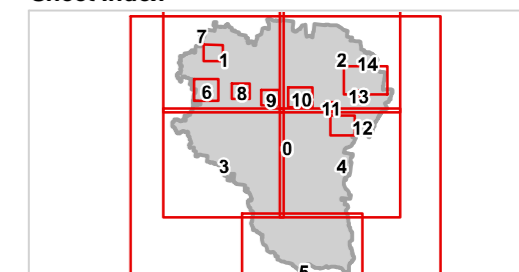
Commencement Date: 22 July 2024

Approx Scale @ A3: 1:20,000



kilometres

Sheet Index





REGIONAL COUNCIL

OM12B Waterways and water resource catchment - water resource catchment overlay map

Water Resources

- Bulk water supply storage
- Bulk water supply storage buffer (200m)
- Bulk water supply storage buffer (400m)
- Bulk water supply storage buffer (800m)
- Water supply buffer area
- Lockyer Creek water resource catchment
- Lockyer Creek water sub-catchments

Other Features

- Major Road
- Railway Network
- Property Boundary
- Local Government Boundary



NOTE

Refer to online or electronic mapping where layers overlap or labels obstruct the data on the map.

MAP INFORMATION

Based on or contains data sourced from the State Government which gives no warranty in relation to the data (including accuracy, reliability, completeness or suitability) and accepts no liability (including without limitation, liability in negligence) for any loss, damage or costs (including consequential damage) relating to any use of the data.
© Copyright Lockyer Valley Regional Council 2024

DATA SOURCES

Cadastral data weekly - whole of State Queensland, Rail network - Queensland, Queensland roads and tracks, State controlled roads surveyed centreline - Queensland: © State of Queensland (Department of Resources) 2023. Water plan catchments - Queensland, Lockyer Creek water sub-catchments: © State of Queensland (Department of Environment and Science) 2020.

Geocentric Datum of Australia (GDA2020 / MGA zone 56)



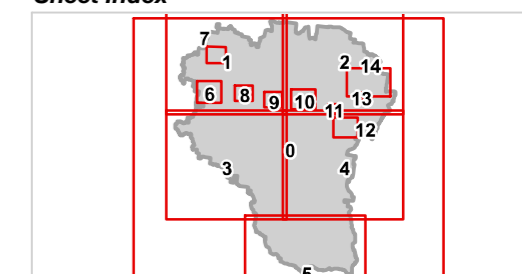
Commencement Date: 22 July 2024

Approx Scale @ A3: 1:7,500

0 0.5

kilometres

Sheet Index





REGIONAL COUNCIL

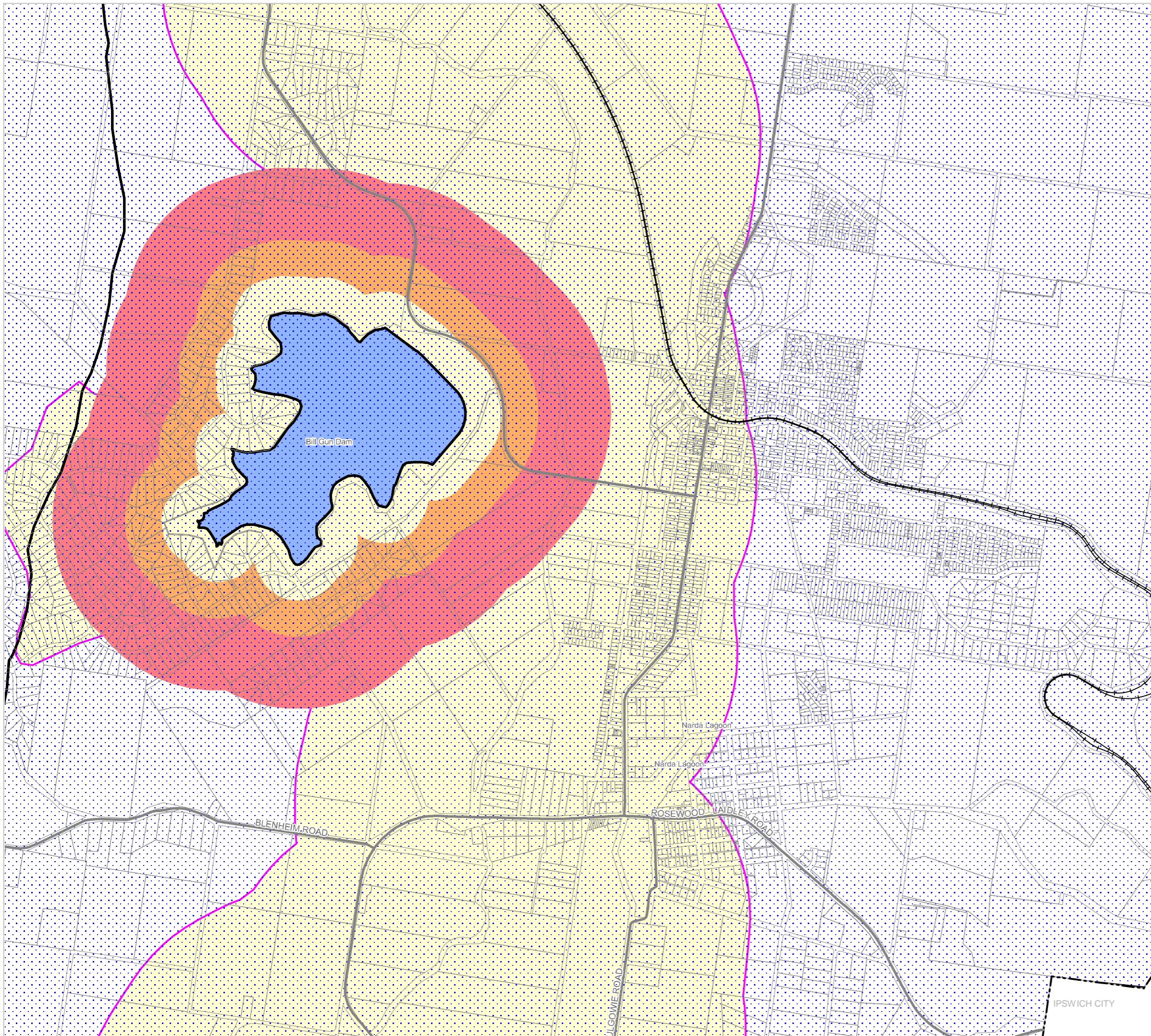
OM12B Waterways and water resource catchment - water resource catchment overlay map

Water Resources

- Bulk water supply storage
- Bulk water supply storage buffer (200m)
- Bulk water supply storage buffer (400m)
- Bulk water supply storage buffer (800m)
- Water supply buffer area
- Lockyer Creek water resource catchment
- Lockyer Creek water sub-catchments

Other Features

- Major Road
- Railway Network
- Property Boundary
- Local Government Boundary



NOTE

Refer to online or electronic mapping where layers overlap or labels obstruct the data on the map.

MAP INFORMATION

Based on or contains data sourced from the State Government which gives no warranty in relation to the data (including accuracy, reliability, completeness or suitability) and accepts no liability (including without limitation, liability in negligence) for any loss, damage or costs (including consequential damage) relating to any use of the data.

DATA SOURCES

Cadastral data weekly - whole of State Queensland, Rail network - Queensland, Queensland roads and tracks, State controlled roads surveyed centreline - Queensland; © State of Queensland (Department of Resources) 2023. Water plan catchments - Queensland, Lockyer Creek water sub-catchments; © State of Queensland (Department of Environment and Science) 2020.

Geocentric Datum of Australia (GDA2020 / MGA zone 56)

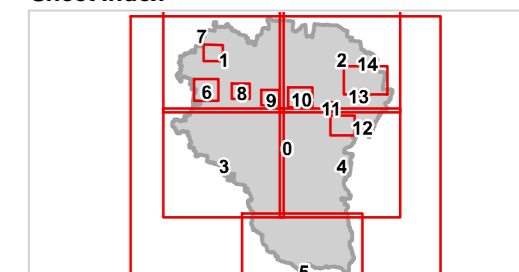


Commencement Date: 22 July 2024

Approx Scale @ A3: 1:20,000



Sheet Index





REGIONAL COUNCIL

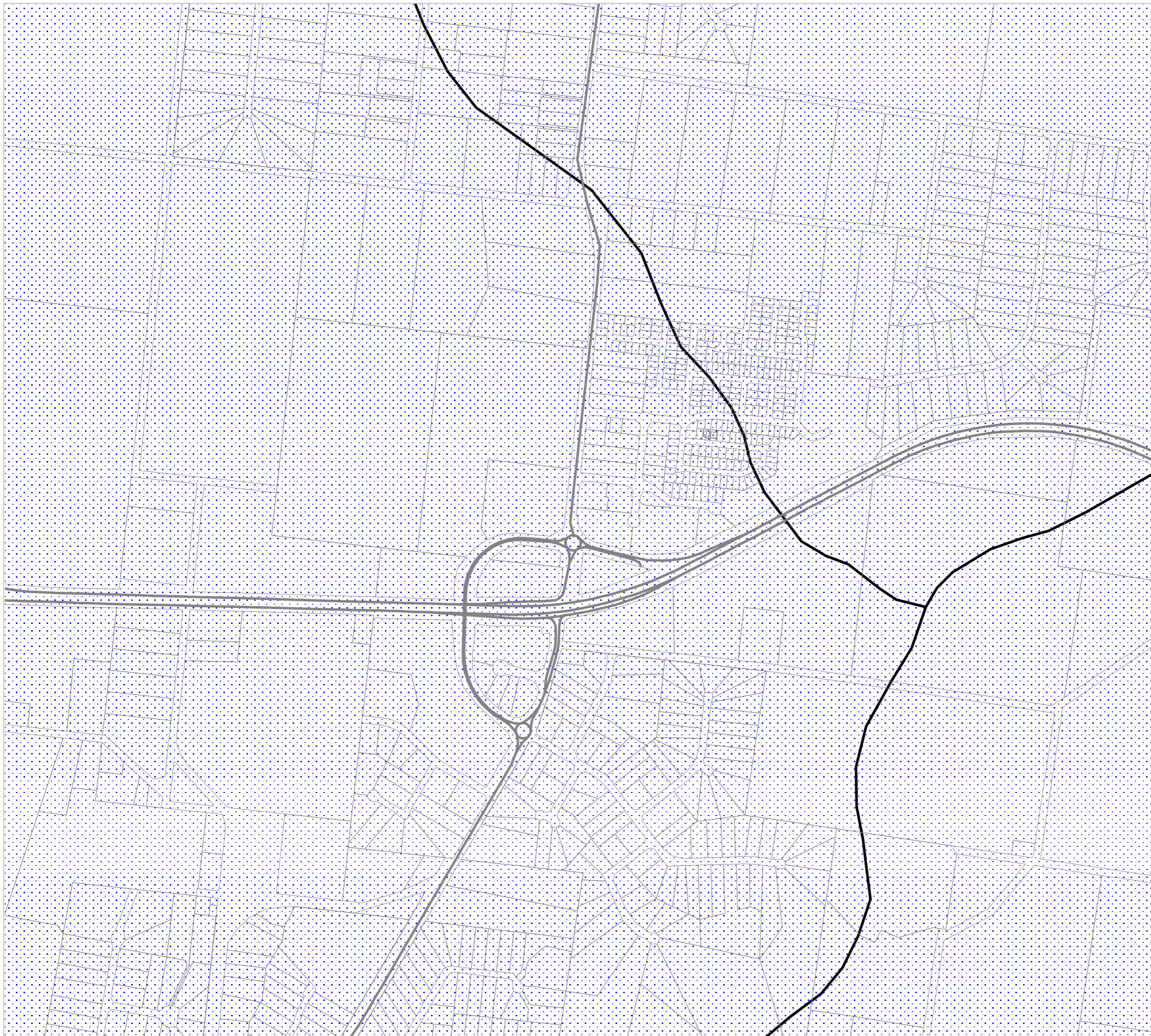
OM12B Waterways and water resource catchment - water resource catchment overlay map

Water Resources

- Bulk water supply storage
- Bulk water supply storage buffer (200m)
- Bulk water supply storage buffer (400m)
- Bulk water supply storage buffer (800m)
- Water supply buffer area
- Lockyer Creek water resource catchment
- Lockyer Creek water sub-catchments

Other Features

- Major Road
- Railway Network
- Property Boundary
- Local Government Boundary



NOTE

Refer to online or electronic mapping where layers overlap or labels obstruct the data on the map.

MAP INFORMATION

Based on or contains data sourced from the State Government which gives no warranty in relation to the data (including accuracy, reliability, completeness or suitability) and accepts no liability (including without limitation, liability in negligence) for any loss, damage or costs (including consequential damage) relating to any use of the data.
© Copyright Lockyer Valley Regional Council 2024

DATA SOURCES

Cadastral data weekly - whole of State Queensland, Rail network - Queensland, Queensland roads and tracks, State controlled roads surveyed centreline - Queensland; © State of Queensland (Department of Resources) 2023. Water plan catchments - Queensland, Lockyer Creek water sub-catchments; © State of Queensland (Department of Environment and Science) 2020.

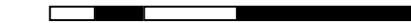
Geocentric Datum of Australia (GDA2020 / MGA zone 56)



Commencement Date: 22 July 2024

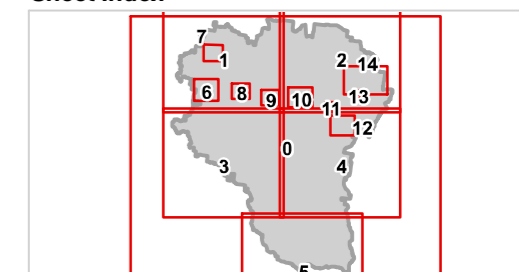
Approx Scale @ A3: 1:10,000

0 0.5



kilometres

Sheet Index





REGIONAL COUNCIL

SOMERSET REGIONAL

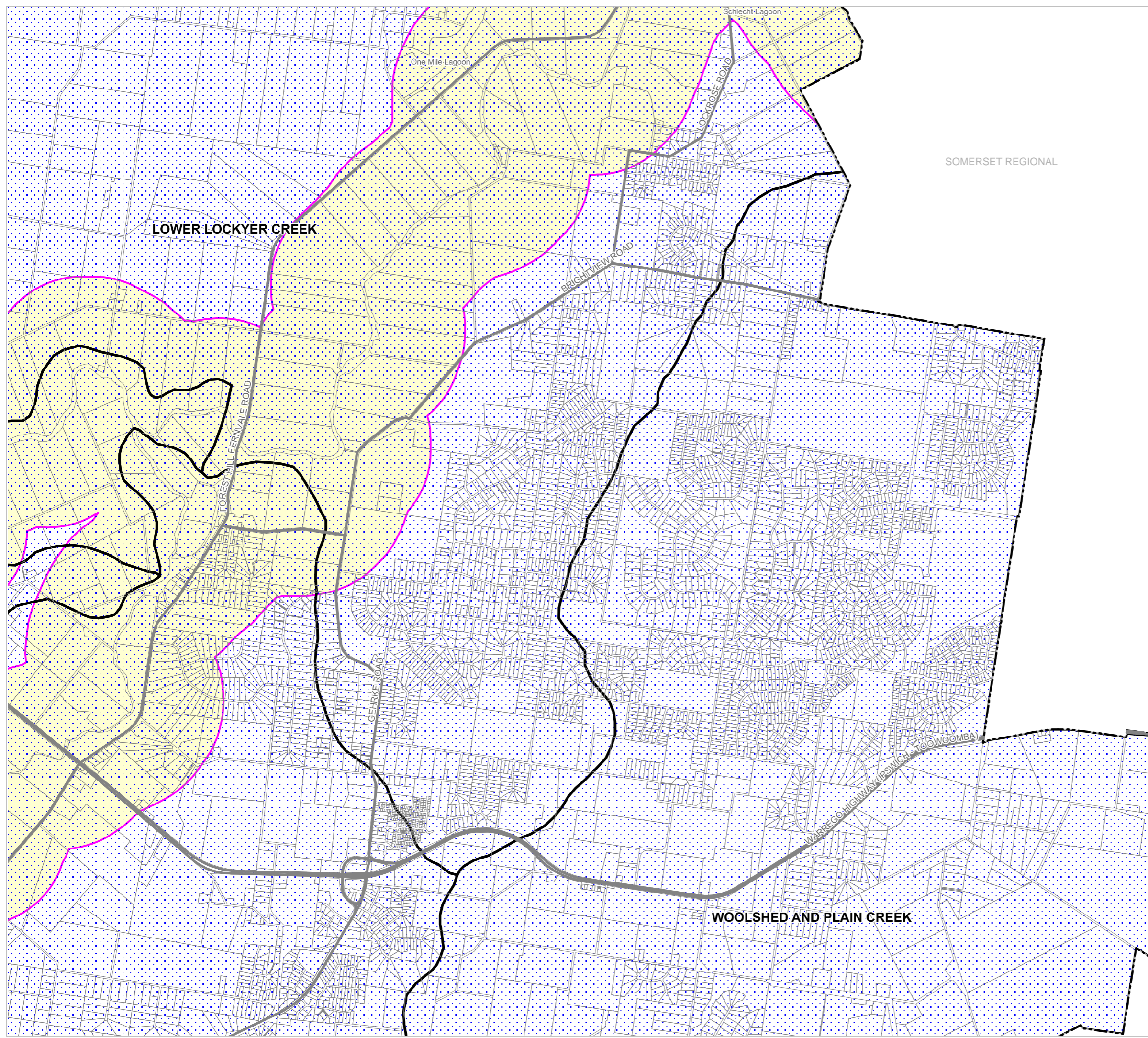
OM12B Waterways and water resource catchment - water resource catchment overlay map

Water Resources

- Bulk water supply storage
- Bulk water supply storage buffer (200m)
- Bulk water supply storage buffer (400m)
- Bulk water supply storage buffer (800m)
- Water supply buffer area
- Lockyer Creek water resource catchment
- Lockyer Creek water sub-catchments

Other Features

- Major Road
- Railway Network
- Property Boundary
- Local Government Boundary



NOTE

Refer to online or electronic mapping where layers overlap or labels obstruct the data on the map.

MAP INFORMATION

Based on or contains data sourced from the State Government which gives no warranty in relation to the data (including accuracy, reliability, completeness or suitability) and accepts no liability (including without limitation, liability in negligence) for any loss, damage or costs (including consequential damage) relating to any use of the data.
© Copyright Lockyer Valley Regional Council 2024

DATA SOURCES

Cadastral data weekly - whole of State Queensland, Rail network - Queensland, Queensland roads and tracks, State controlled roads surveyed centreline - Queensland: © State of Queensland (Department of Resources) 2023. Water plan catchments - Queensland, Lockyer Creek water sub-catchments: © State of Queensland (Department of Environment and Science) 2020.

Geocentric Datum of Australia (GDA2020 / MGA zone 56)



Commencement Date: 22 July 2024

Approx Scale @ A3: 1:40,000



kilometres

Sheet Index

