



REGIONAL COUNCIL

OM14 Transport noise corridor - information overlay map

Transport corridors

- Future railway corridor
- Future state-controlled road corridor

Transport noise categories

- Category 0: Noise Level < 58 dB(A)
- Category 1: 58 dB(A) =< Noise Level < 63 dB(A)
- Category 2: 63 dB(A) =< Noise Level < 68 dB(A)
- Category 3: 68 dB(A) =< Noise Level < 73 dB(A)
- Category 4: Noise Level >= 73 dB(A)

Other Features

- Railway Network
- Property Boundary
- Local Government Boundary
- Watercourse / Waterbody

NOTE

Refer to online or electronic mapping where layers overlap or labels obstruct the data on the map.

MAP INFORMATION

Based on or contains data sourced from the State Government which gives no warranty in relation to the data (including accuracy, reliability, completeness or suitability) and accepts no liability (including without limitation, liability in negligence) for any loss, damage or costs (including consequential damage) relating to any use of the data.
© Copyright Lockyer Valley Regional Council 2024

DATA SOURCES

Cadastral data weekly - whole of State Queensland, Rail network - Queensland, Baseline roads and tracks - Queensland: © State of Queensland (Department of Resources) 2023. Data sourced 7/12/2020; Noise corridor - State-controlled road (MANDATORY area), Noise corridor - State-controlled road (VOLUNTARY area), Noise corridor - rail network: © State of Queensland (Department of Transport and Main Roads) 2020

Geocentric Datum of Australia (GDA2020 / MGA zone 56)



Commencement Date: 22 July 2024

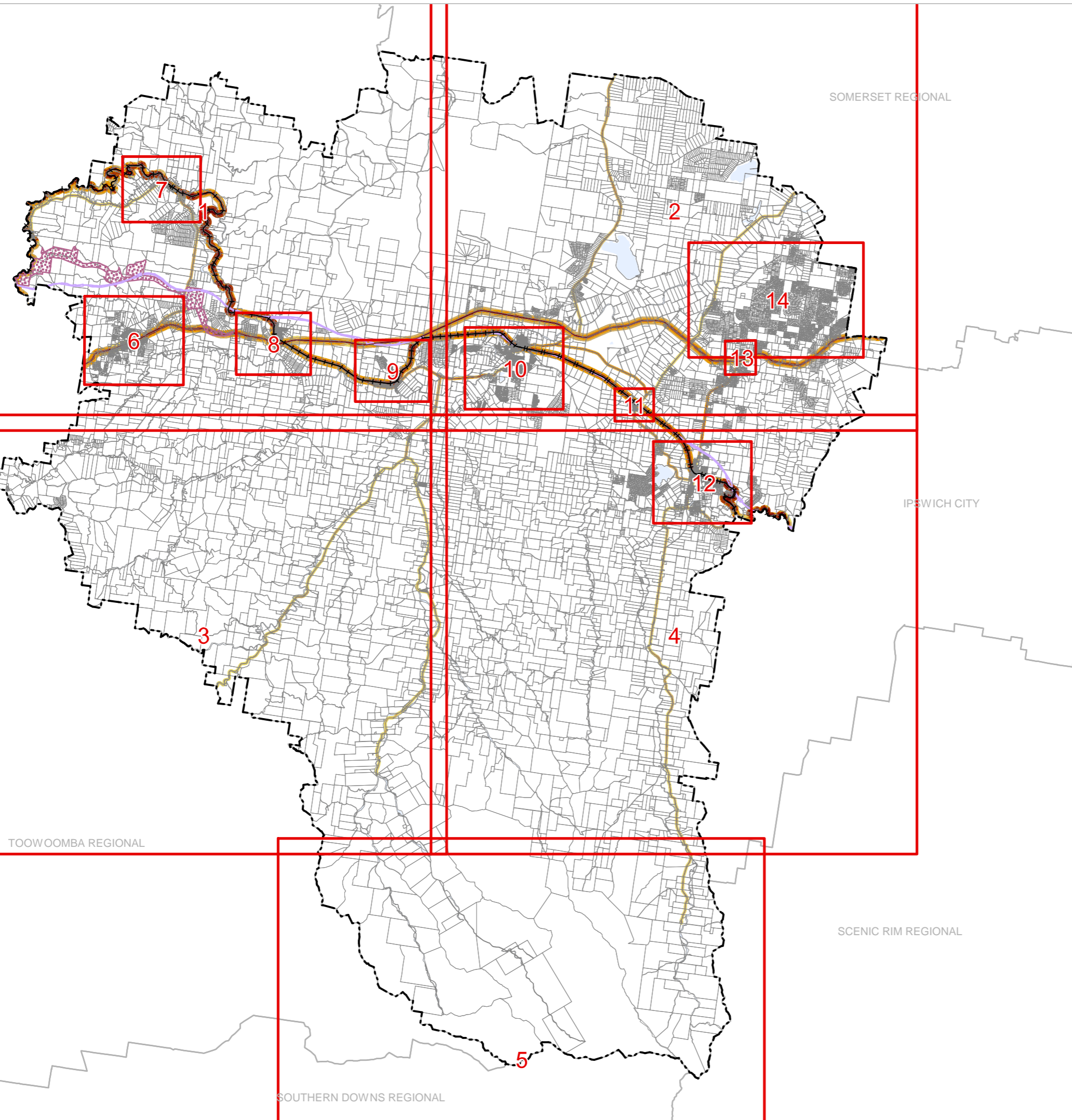
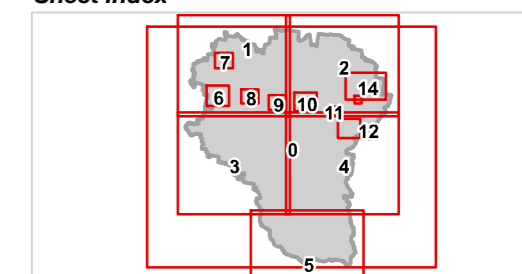
Approx Scale @ A3: 1:250,000

0 10



kilometres

Sheet Index



SOMERSET REGIONAL

IPSWICH CITY

TOOWOOMBA REGIONAL

SCENIC RIM REGIONAL

SOUTHERN DOWNS REGIONAL



REGIONAL COUNCIL

OM14 Transport noise corridor - information overlay map

Transport corridors

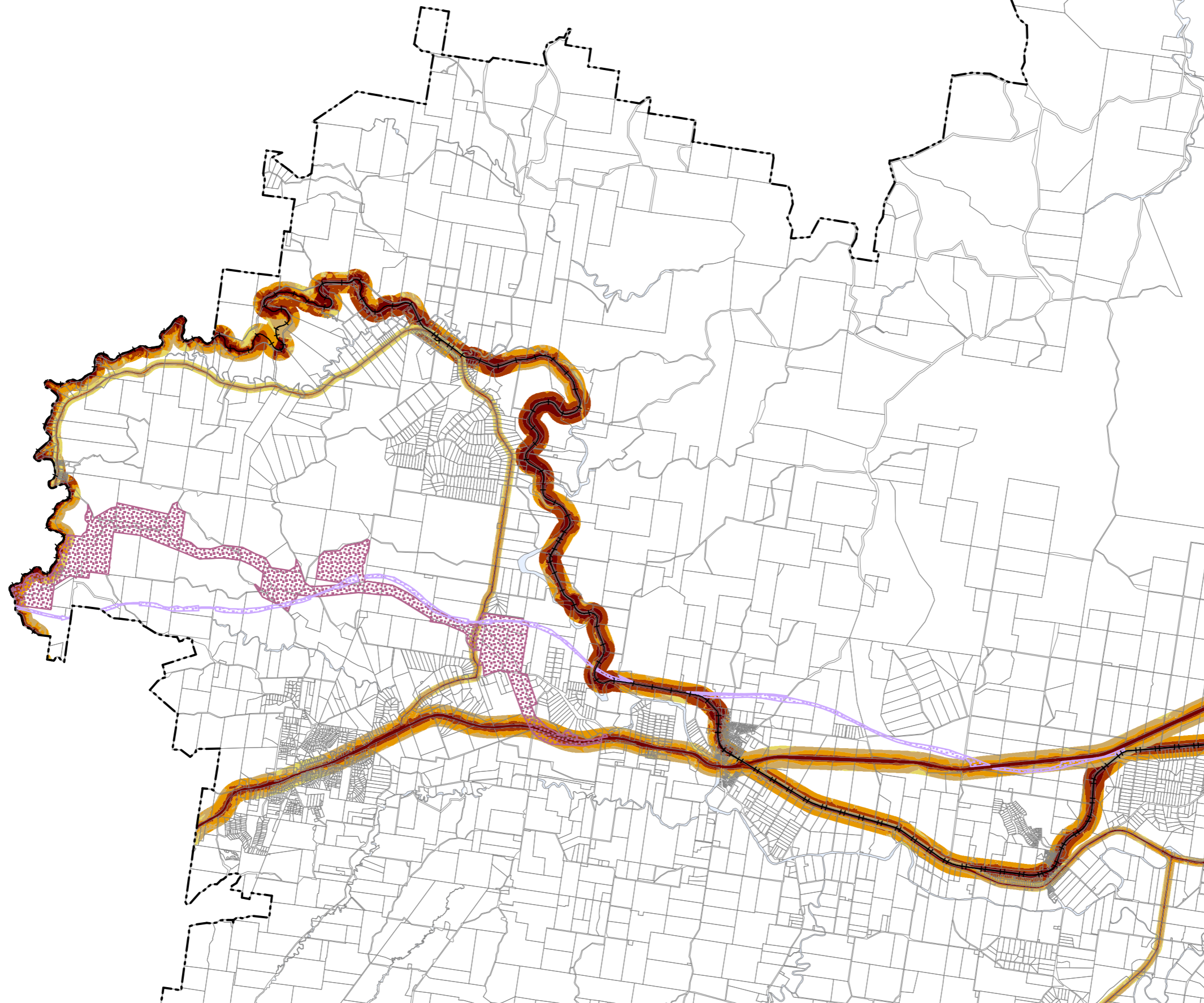
- Future railway corridor
- Future state-controlled road corridor

Transport noise categories

- Category 0: Noise Level < 58 dB(A)
- Category 1: 58 dB(A) =< Noise Level < 63 dB(A)
- Category 2: 63 dB(A) =< Noise Level < 68 dB(A)
- Category 3: 68 dB(A) =< Noise Level < 73 dB(A)
- Category 4: Noise Level >= 73 dB(A)

Other Features

- Railway Network
- Property Boundary
- Local Government Boundary
- Watercourse / Waterbody



NOTE

Refer to online or electronic mapping where layers overlap or labels obstruct the data on the map.

MAP INFORMATION

Based on or contains data sourced from the State Government which gives no warranty in relation to the data (including accuracy, reliability, completeness or suitability) and accepts no liability (including without limitation, liability in negligence) for any loss, damage or costs (including consequential damage) relating to any use of the data.
© Copyright Lockyer Valley Regional Council 2024

DATA SOURCES

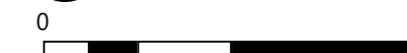
Cadastral data weekly - whole of State Queensland, Rail network - Queensland, Baseline roads and tracks - Queensland: © State of Queensland (Department of Resources) 2023. Data sourced 7/12/2020; Noise corridor - State-controlled road (MANDATORY area), Noise corridor - State-controlled road (VOLUNTARY area), Noise corridor - rail network: © State of Queensland (Department of Transport and Main Roads) 2020

Geocentric Datum of Australia (GDA2020 / MGA zone 56)

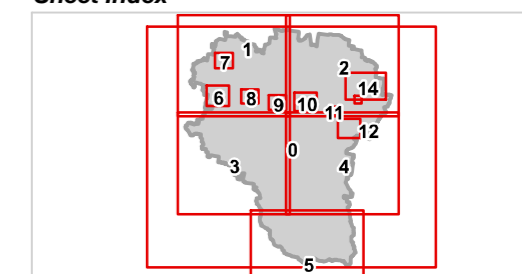


Commencement Date: 22 July 2024

Approx Scale @ A3: 1:100,000



Sheet Index





REGIONAL COUNCIL

OM14 Transport noise corridor - information overlay map

Transport corridors

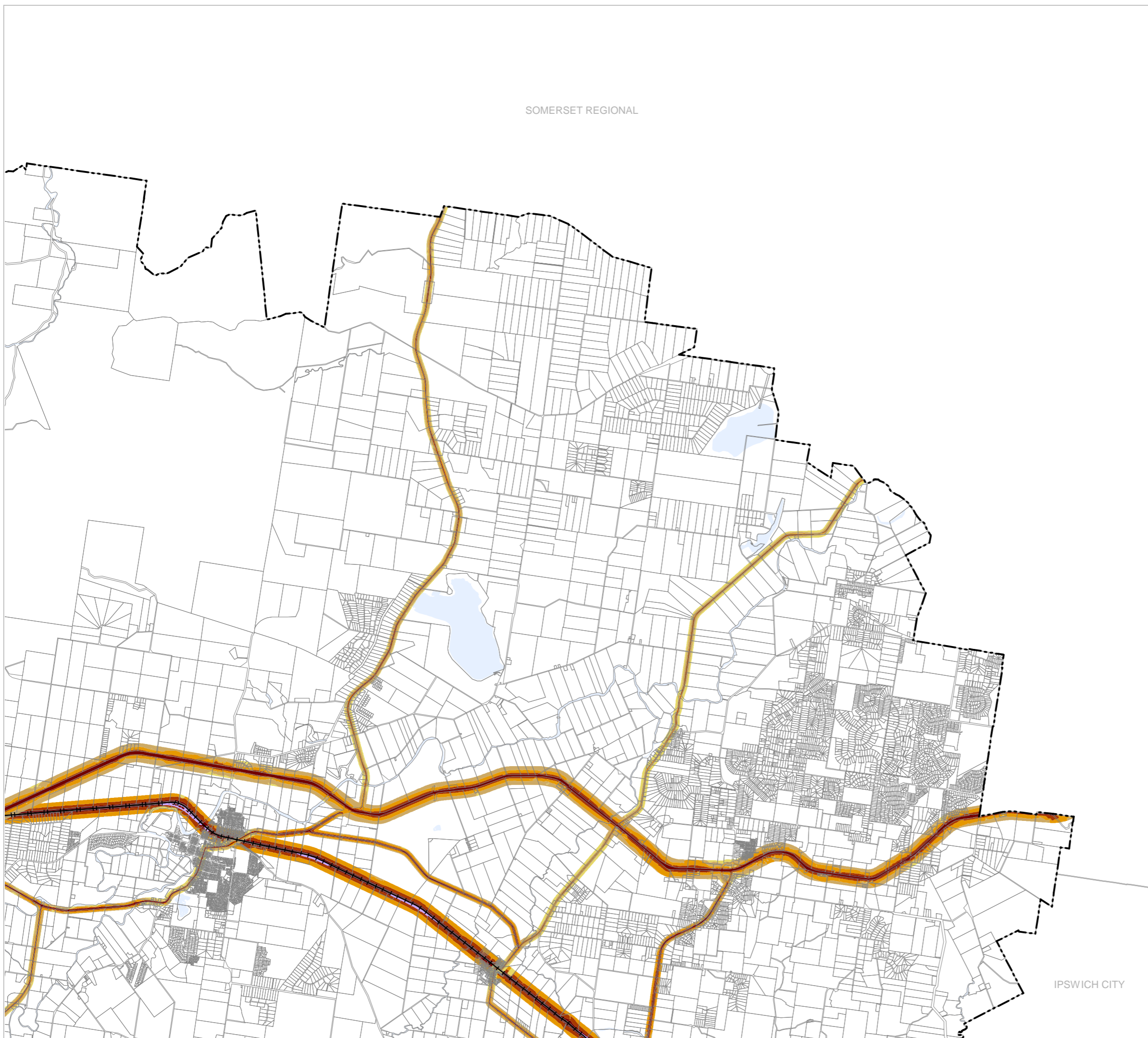
- Future railway corridor
- Future state-controlled road corridor

Transport noise categories

- Category 0: Noise Level < 58 dB(A)
- Category 1: 58 dB(A) =< Noise Level < 63 dB(A)
- Category 2: 63 dB(A) =< Noise Level < 68 dB(A)
- Category 3: 68 dB(A) =< Noise Level < 73 dB(A)
- Category 4: Noise Level >= 73 dB(A)

Other Features

- Railway Network
- Property Boundary
- Local Government Boundary
- Watercourse / Waterbody



NOTE

Refer to online or electronic mapping where layers overlap or labels obstruct the data on the map.

MAP INFORMATION

Based on or contains data sourced from the State Government which gives no warranty in relation to the data (including accuracy, reliability, completeness or suitability) and accepts no liability (including without limitation, liability in negligence) for any loss, damage or costs (including consequential damage) relating to any use of the data.
© Copyright Lockyer Valley Regional Council 2024

DATA SOURCES

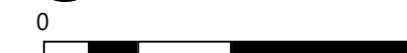
Cadastral data weekly - whole of State Queensland, Rail network - Queensland, Baseline roads and tracks - Queensland: © State of Queensland (Department of Resources) 2023. Data sourced 7/12/2020; Noise corridor - State-controlled road (MANDATORY area), Noise corridor - State-controlled road (VOLUNTARY area), Noise corridor - rail network: © State of Queensland (Department of Transport and Main Roads) 2020

Geocentric Datum of Australia (GDA2020 / MGA zone 56)

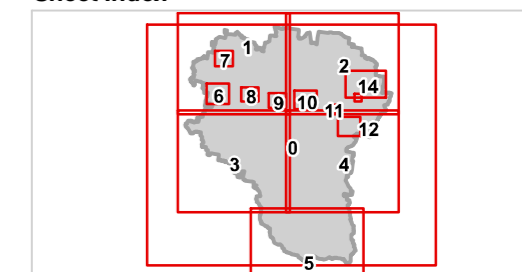


Commencement Date: 22 July 2024

Approx Scale @ A3: 1:100,000



Sheet Index





REGIONAL COUNCIL

OM14 Transport noise corridor - information overlay map

Transport corridors

- Future railway corridor
- Future state-controlled road corridor

Transport noise categories

- Category 0: Noise Level < 58 dB(A)
- Category 1: 58 dB(A) =< Noise Level < 63 dB(A)
- Category 2: 63 dB(A) =< Noise Level < 68 dB(A)
- Category 3: 68 dB(A) =< Noise Level < 73 dB(A)
- Category 4: Noise Level >= 73 dB(A)

Other Features

- Railway Network
- Property Boundary
- Local Government Boundary
- Watercourse / Waterbody

NOTE

Refer to online or electronic mapping where layers overlap or labels obstruct the data on the map.

MAP INFORMATION

Based on or contains data sourced from the State Government which gives no warranty in relation to the data (including accuracy, reliability, completeness or suitability) and accepts no liability (including without limitation, liability in negligence) for any loss, damage or costs (including consequential damage) relating to any use of the data.
© Copyright Lockyer Valley Regional Council 2024

DATA SOURCES

Cadastral data weekly - whole of State Queensland, Rail network - Queensland, Baseline roads and tracks - Queensland: © State of Queensland (Department of Resources) 2023. Data sourced 7/12/2020; Noise corridor - State-controlled road (MANDATORY area), Noise corridor - State-controlled road (VOLUNTARY area), Noise corridor - rail network: © State of Queensland (Department of Transport and Main Roads) 2020

Geocentric Datum of Australia (GDA2020 / MGA zone 56)



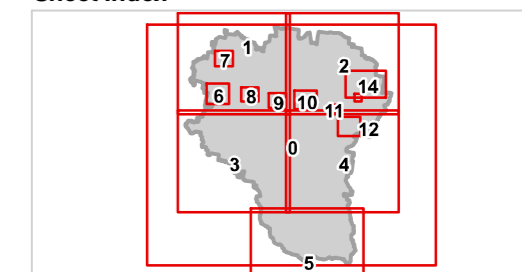
Commencement Date: 22 July 2024

Approx Scale @ A3: 1:100,000

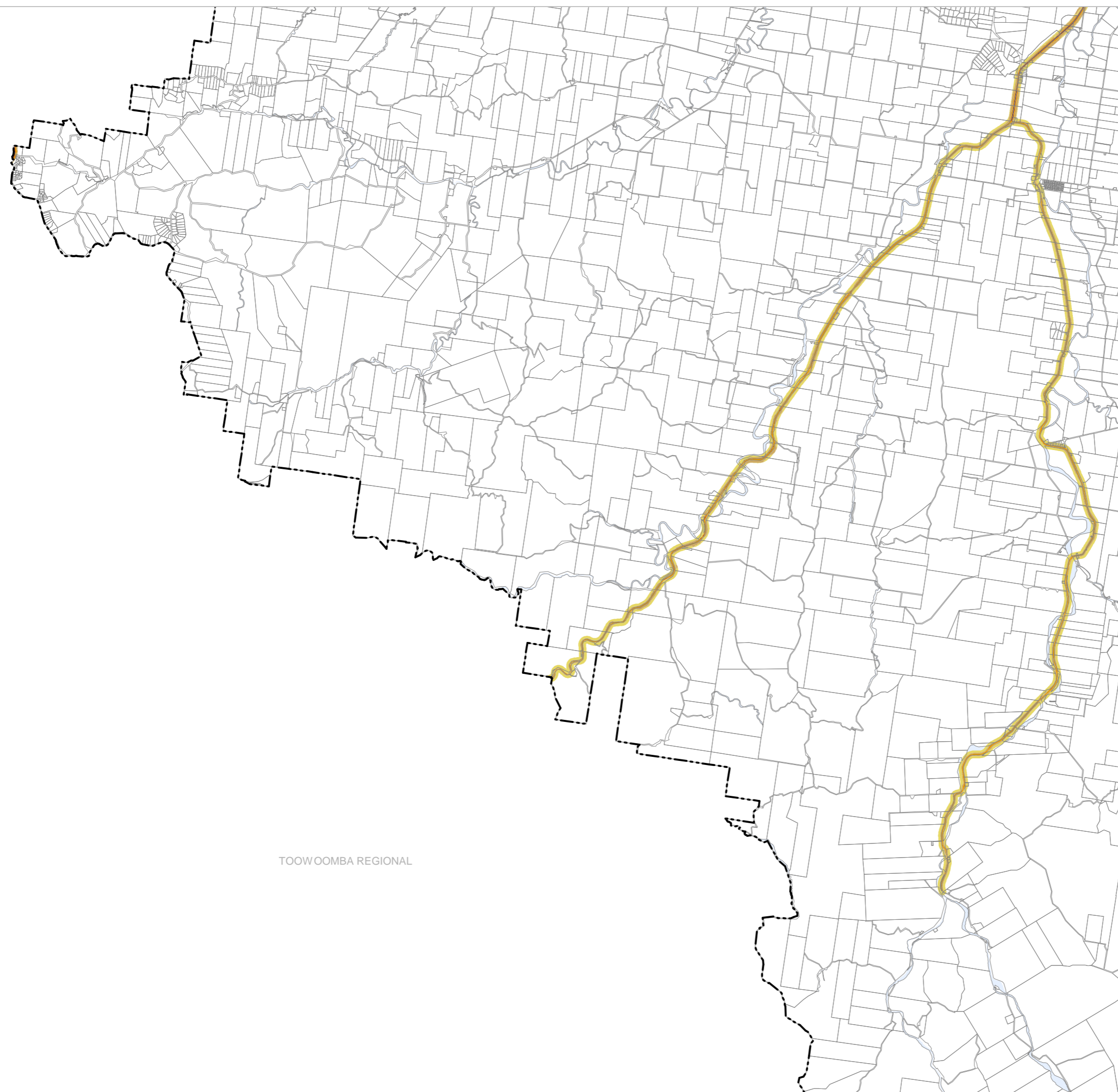
0 5

kilometres

Sheet Index



TOOWOOMBA REGIONAL





REGIONAL COUNCIL

OM14 Transport noise corridor - information overlay map

Transport corridors

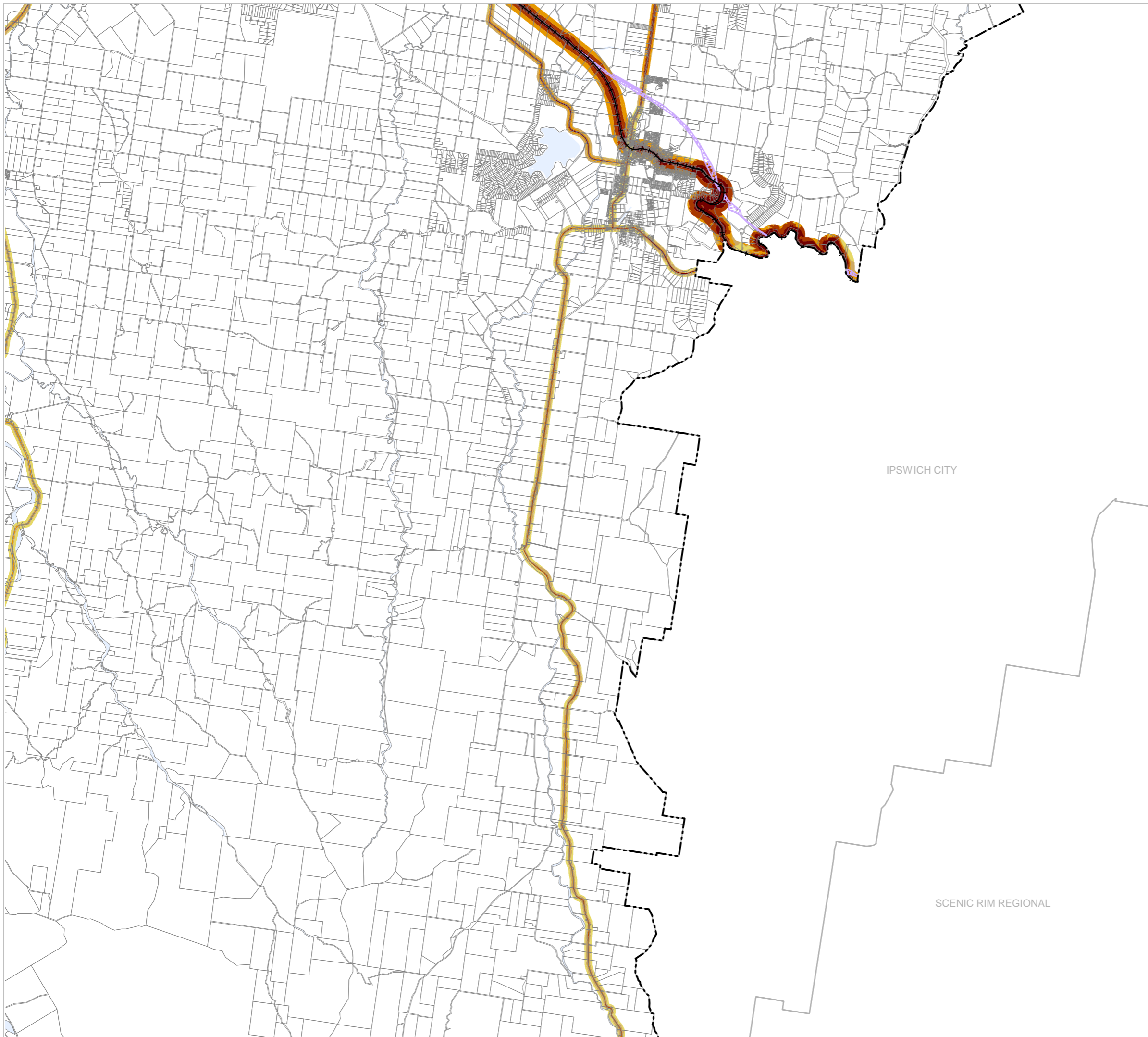
- Future railway corridor
- Future state-controlled road corridor

Transport noise categories

- Category 0: Noise Level < 58 dB(A)
- Category 1: 58 dB(A) =< Noise Level < 63 dB(A)
- Category 2: 63 dB(A) =< Noise Level < 68 dB(A)
- Category 3: 68 dB(A) =< Noise Level < 73 dB(A)
- Category 4: Noise Level >= 73 dB(A)

Other Features

- Railway Network
- Property Boundary
- Local Government Boundary
- Watercourse / Waterbody



IPSWICH CITY

SCENIC RIM REGIONAL

NOTE

Refer to online or electronic mapping where layers overlap or labels obstruct the data on the map.

MAP INFORMATION

Based on or contains data sourced from the State Government which gives no warranty in relation to the data (including accuracy, reliability, completeness or suitability) and accepts no liability (including without limitation, liability in negligence) for any loss, damage or costs (including consequential damage) relating to any use of the data.
© Copyright Lockyer Valley Regional Council 2024

DATA SOURCES

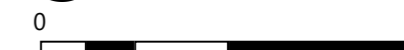
Cadastral data weekly - whole of State Queensland, Rail network - Queensland, Baseline roads and tracks - Queensland: © State of Queensland (Department of Resources) 2023. Data sourced 7/12/2020; Noise corridor - State-controlled road (MANDATORY area), Noise corridor - State-controlled road (VOLUNTARY area), Noise corridor - rail network: © State of Queensland (Department of Transport and Main Roads) 2020

Geocentric Datum of Australia (GDA2020 / MGA zone 56)

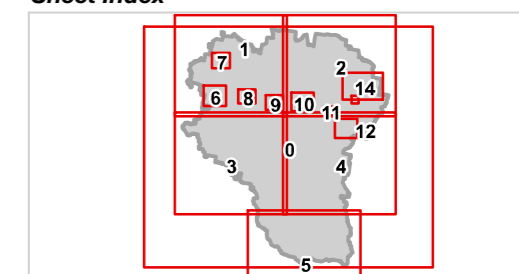


Commencement Date: 22 July 2024

Approx Scale @ A3: 1:100,000



Sheet Index





REGIONAL COUNCIL

OM14 Transport noise corridor - information overlay map

Transport corridors

- Future railway corridor
- Future state-controlled road corridor

Transport noise categories

- Category 0: Noise Level < 58 dB(A)
- Category 1: 58 dB(A) =< Noise Level < 63 dB(A)
- Category 2: 63 dB(A) =< Noise Level < 68 dB(A)
- Category 3: 68 dB(A) =< Noise Level < 73 dB(A)
- Category 4: Noise Level >= 73 dB(A)

Other Features

- Railway Network
- Property Boundary
- Local Government Boundary
- Watercourse / Waterbody



NOTE

Refer to online or electronic mapping where layers overlap or labels obstruct the data on the map.

MAP INFORMATION

Based on or contains data sourced from the State Government which gives no warranty in relation to the data (including accuracy, reliability, completeness or suitability) and accepts no liability (including without limitation, liability in negligence) for any loss, damage or costs (including consequential damage) relating to any use of the data.
© Copyright Lockyer Valley Regional Council 2024

DATA SOURCES

Cadastral data weekly - whole of State Queensland, Rail network - Queensland, Baseline roads and tracks - Queensland: © State of Queensland (Department of Resources) 2023. Data sourced 7/12/2020; Noise corridor - State-controlled road (MANDATORY area), Noise corridor - State-controlled road (VOLUNTARY area), Noise corridor - rail network: © State of Queensland (Department of Transport and Main Roads) 2020

Geocentric Datum of Australia (GDA2020 / MGA zone 56)



Commencement Date: 22 July 2024

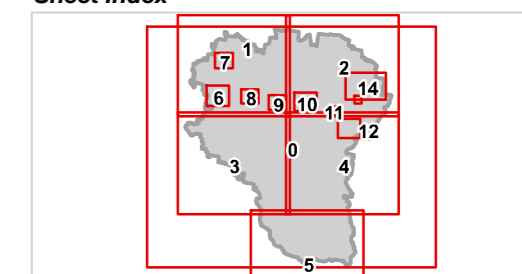
Approx Scale @ A3: 1:100,000

0 5



kilometres

Sheet Index





REGIONAL COUNCIL

OM14 Transport noise corridor - information overlay map

Transport corridors

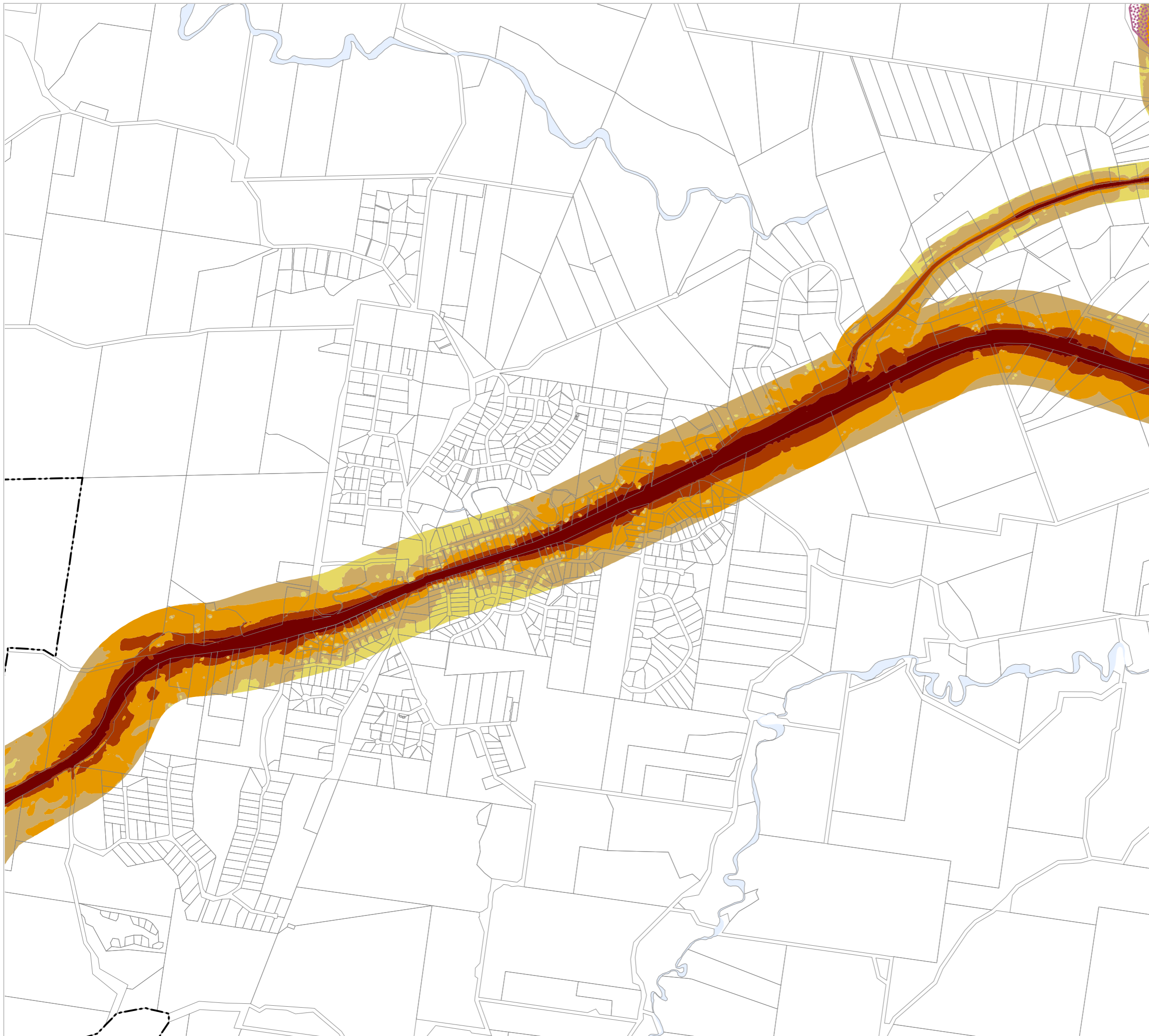
- Future railway corridor
- Future state-controlled road corridor

Transport noise categories

- Category 0: Noise Level < 58 dB(A)
- Category 1: 58 dB(A) <= Noise Level < 63 dB(A)
- Category 2: 63 dB(A) <= Noise Level < 68 dB(A)
- Category 3: 68 dB(A) <= Noise Level < 73 dB(A)
- Category 4: Noise Level >= 73 dB(A)

Other Features

- Railway Network
- Property Boundary
- Local Government Boundary
- Watercourse / Waterbody



NOTE

Refer to online or electronic mapping where layers overlap or labels obstruct the data on the map.

MAP INFORMATION

Based on or contains data sourced from the State Government which gives no warranty in relation to the data (including accuracy, reliability, completeness or suitability) and accepts no liability (including without limitation, liability in negligence) for any loss, damage or costs (including consequential damage) relating to any use of the data.
© Copyright Lockyer Valley Regional Council 2024

DATA SOURCES

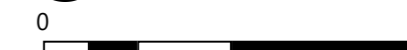
Cadastral data weekly - whole of State Queensland, Rail network - Queensland, Baseline roads and tracks - Queensland: © State of Queensland (Department of Resources) 2023. Data sourced 7/12/2020; Noise corridor - State-controlled road (MANDATORY area), Noise corridor - State-controlled road (VOLUNTARY area), Noise corridor - rail network: © State of Queensland (Department of Transport and Main Roads) 2020

Geocentric Datum of Australia (GDA2020 / MGA zone 56)



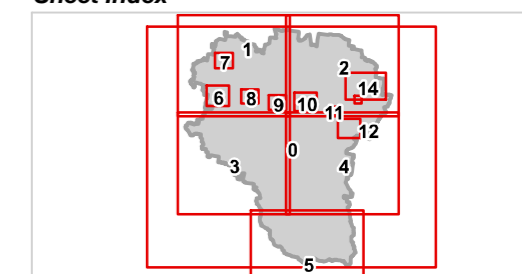
Commencement Date: 22 July 2024

Approx Scale @ A3: 1:20,000



kilometres

Sheet Index





REGIONAL COUNCIL

OM14 Transport noise corridor - information overlay map

Transport corridors

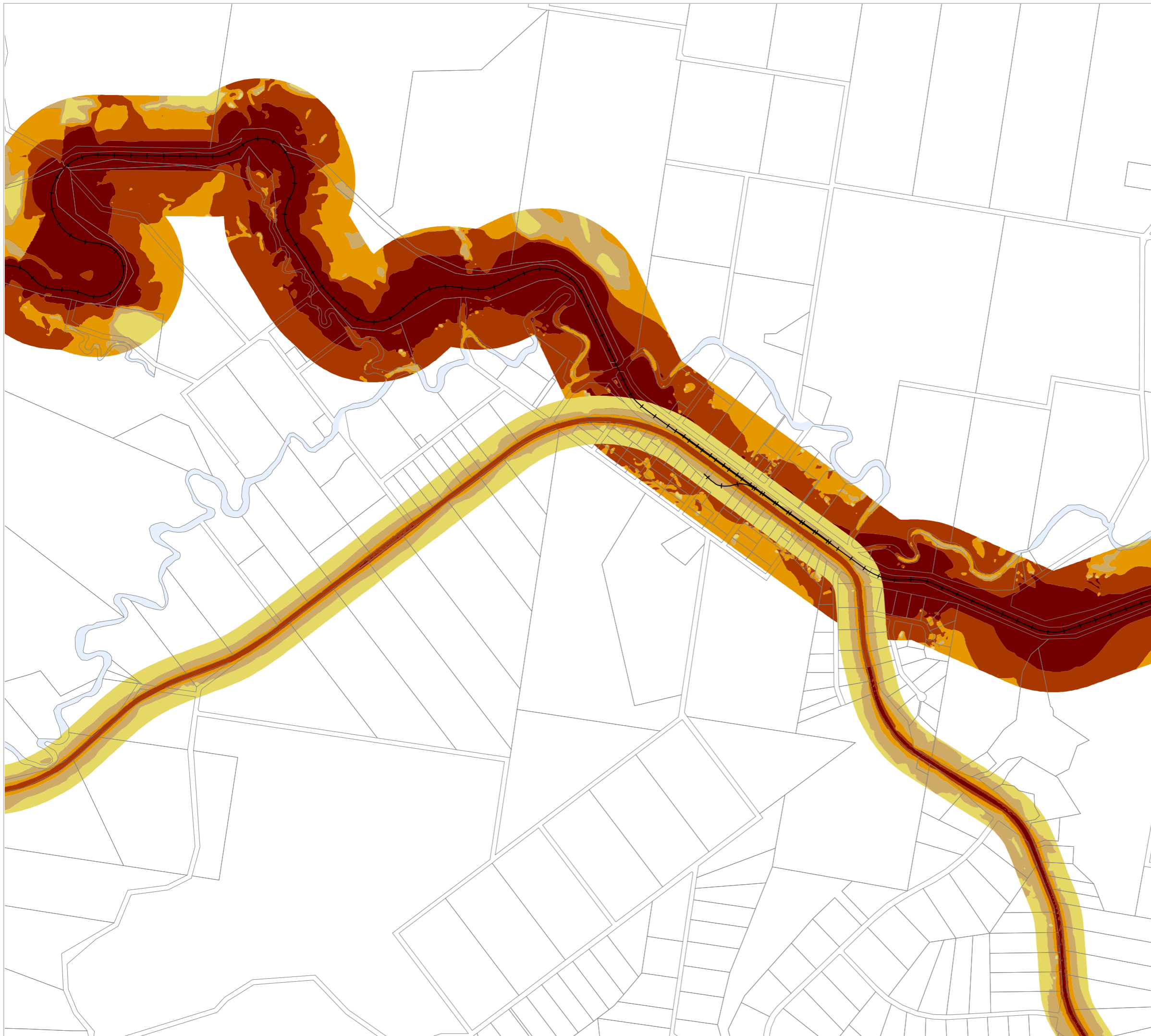
- Future railway corridor
- Future state-controlled road corridor

Transport noise categories

- Category 0: Noise Level < 58 dB(A)
- Category 1: 58 dB(A) =< Noise Level < 63 dB(A)
- Category 2: 63 dB(A) =< Noise Level < 68 dB(A)
- Category 3: 68 dB(A) =< Noise Level < 73 dB(A)
- Category 4: Noise Level >= 73 dB(A)

Other Features

- Railway Network
- Property Boundary
- Local Government Boundary
- Watercourse / Waterbody



NOTE

Refer to online or electronic mapping where layers overlap or labels obstruct the data on the map.

MAP INFORMATION

Based on or contains data sourced from the State Government which gives no warranty in relation to the data (including accuracy, reliability, completeness or suitability) and accepts no liability (including without limitation, liability in negligence) for any loss, damage or costs (including consequential damage) relating to any use of the data.
© Copyright Lockyer Valley Regional Council 2024

DATA SOURCES

Cadastral data weekly - whole of State Queensland, Rail network - Queensland, Baseline roads and tracks - Queensland: © State of Queensland (Department of Resources) 2023. Data sourced 7/12/2020; Noise corridor - State-controlled road (MANDATORY area), Noise corridor - State-controlled road (VOLUNTARY area), Noise corridor - rail network: © State of Queensland (Department of Transport and Main Roads) 2020

Geocentric Datum of Australia (GDA2020 / MGA zone 56)



Commencement Date: 22 July 2024

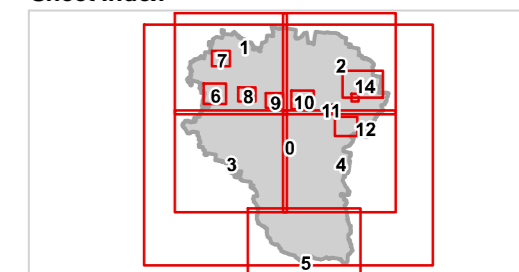
Approx Scale @ A3: 1:15,000

0 0.5



kilometres

Sheet Index





REGIONAL COUNCIL

OM14 Transport noise corridor - information overlay map

Transport corridors

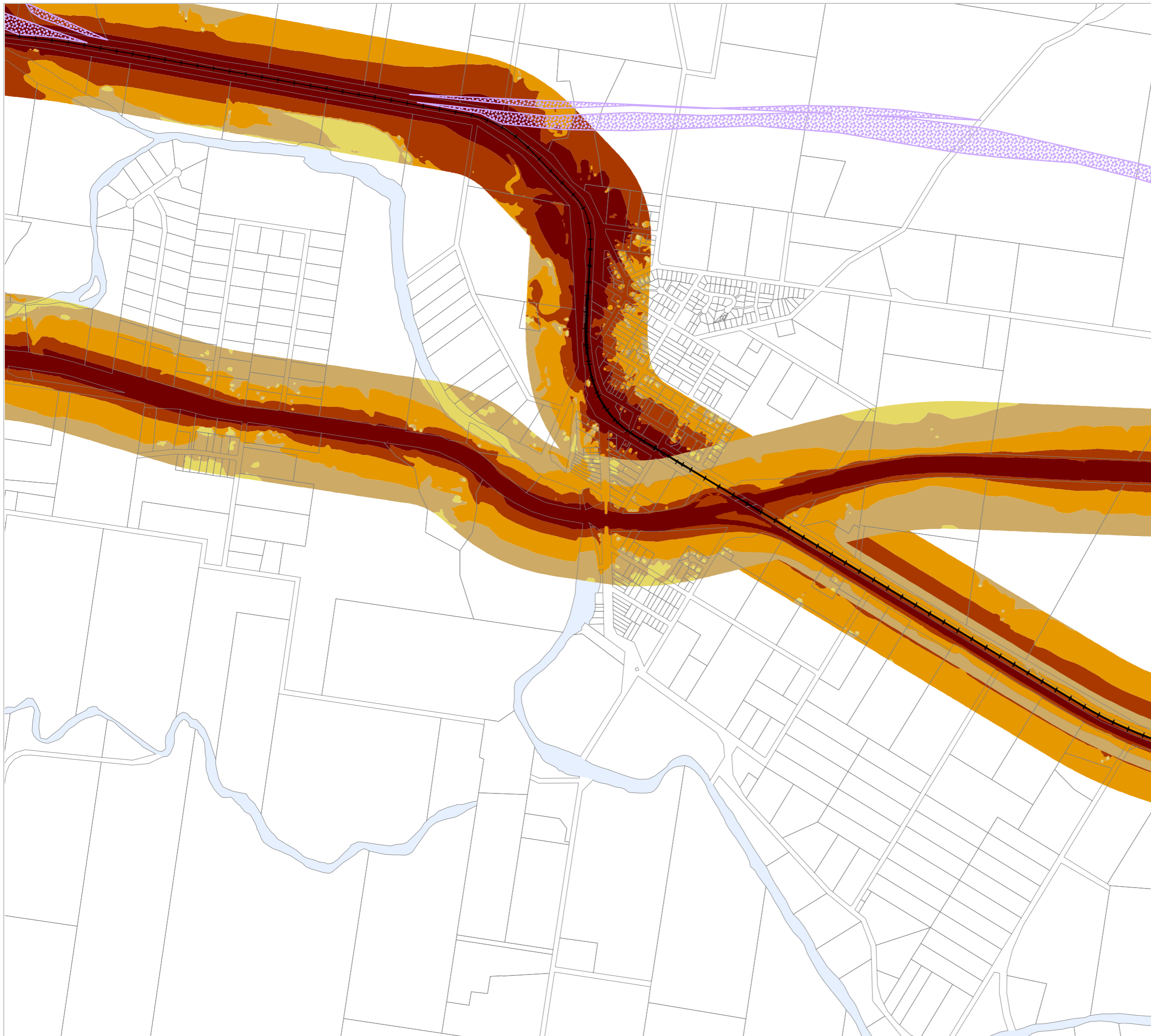
- Future railway corridor
- Future state-controlled road corridor

Transport noise categories

- Category 0: Noise Level < 58 dB(A)
- Category 1: 58 dB(A) <= Noise Level < 63 dB(A)
- Category 2: 63 dB(A) <= Noise Level < 68 dB(A)
- Category 3: 68 dB(A) <= Noise Level < 73 dB(A)
- Category 4: Noise Level >= 73 dB(A)

Other Features

- Railway Network
- Property Boundary
- Local Government Boundary
- Watercourse / Waterbody



NOTE

Refer to online or electronic mapping where layers overlap or labels obstruct the data on the map.

MAP INFORMATION

Based on or contains data sourced from the State Government which gives no warranty in relation to the data (including accuracy, reliability, completeness or suitability) and accepts no liability (including without limitation, liability in negligence) for any loss, damage or costs (including consequential damage) relating to any use of the data.

© Copyright Lockyer Valley Regional Council 2024

DATA SOURCES

Cadastral data weekly - whole of State Queensland, Rail network - Queensland, Baseline roads and tracks - Queensland: © State of Queensland (Department of Resources) 2023. Data sourced 7/12/2020; Noise corridor - State-controlled road (MANDATORY area), Noise corridor - State-controlled road (VOLUNTARY area), Noise corridor - rail network: © State of Queensland (Department of Transport and Main Roads) 2020

Geocentric Datum of Australia (GDA2020 / MGA zone 56)



Commencement Date: 22 July 2024

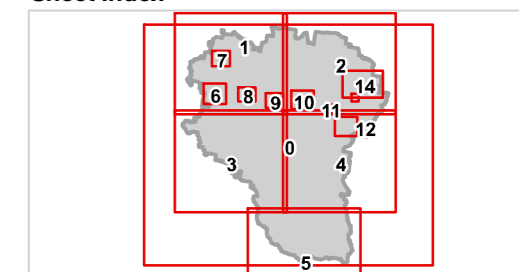
Approx Scale @ A3: 1:15,000

0 0.5



kilometres

Sheet Index





REGIONAL COUNCIL

OM14 Transport noise corridor - information overlay map

Transport corridors

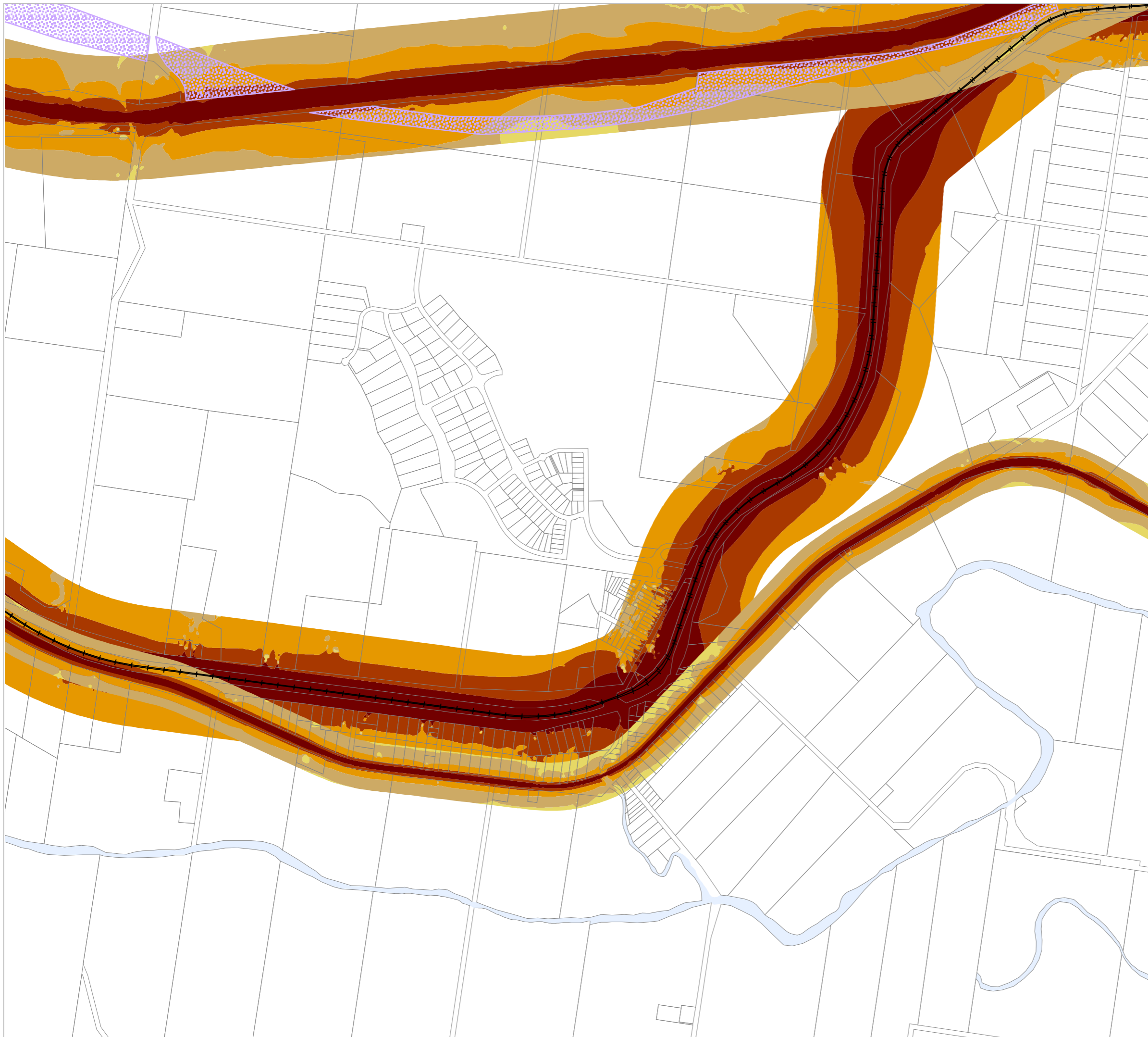
- Future railway corridor
- Future state-controlled road corridor

Transport noise categories

- Category 0: Noise Level < 58 dB(A)
- Category 1: 58 dB(A) =< Noise Level < 63 dB(A)
- Category 2: 63 dB(A) =< Noise Level < 68 dB(A)
- Category 3: 68 dB(A) =< Noise Level < 73 dB(A)
- Category 4: Noise Level >= 73 dB(A)

Other Features

- Railway Network
- Property Boundary
- Local Government Boundary
- Watercourse / Waterbody



NOTE

Refer to online or electronic mapping where layers overlap or labels obstruct the data on the map.

MAP INFORMATION

Based on or contains data sourced from the State Government which gives no warranty in relation to the data (including accuracy, reliability, completeness or suitability) and accepts no liability (including without limitation, liability in negligence) for any loss, damage or costs (including consequential damage) relating to any use of the data.
© Copyright Lockyer Valley Regional Council 2024

DATA SOURCES

Cadastral data weekly - whole of State Queensland, Rail network - Queensland, Baseline roads and tracks - Queensland: © State of Queensland (Department of Resources) 2023. Data sourced 7/12/2020; Noise corridor - State-controlled road (MANDATORY area), Noise corridor - State-controlled road (VOLUNTARY area), Noise corridor - rail network: © State of Queensland (Department of Transport and Main Roads) 2020

Geocentric Datum of Australia (GDA2020 / MGA zone 56)



Commencement Date: 22 July 2024

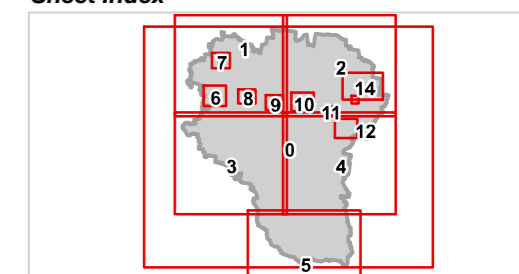
Approx Scale @ A3: 1:15,000

0 0.5



kilometres

Sheet Index





REGIONAL COUNCIL

OM14 Transport noise corridor - information overlay map

Transport corridors

- Future railway corridor
- Future state-controlled road corridor

Transport noise categories

- Category 0: Noise Level < 58 dB(A)
- Category 1: 58 dB(A) =< Noise Level < 63 dB(A)
- Category 2: 63 dB(A) =< Noise Level < 68 dB(A)
- Category 3: 68 dB(A) =< Noise Level < 73 dB(A)
- Category 4: Noise Level >= 73 dB(A)

Other Features

- Railway Network
- Property Boundary
- Local Government Boundary
- Watercourse / Waterbody



NOTE

Refer to online or electronic mapping where layers overlap or labels obstruct the data on the map.

MAP INFORMATION

Based on or contains data sourced from the State Government which gives no warranty in relation to the data (including accuracy, reliability, completeness or suitability) and accepts no liability (including without limitation, liability in negligence) for any loss, damage or costs (including consequential damage) relating to any use of the data.
© Copyright Lockyer Valley Regional Council 2024

DATA SOURCES

Cadastral data weekly - whole of State Queensland, Rail network - Queensland, Baseline roads and tracks - Queensland: © State of Queensland (Department of Resources) 2023. Data sourced 7/12/2020; Noise corridor - State-controlled road (MANDATORY area), Noise corridor - State-controlled road (VOLUNTARY area), Noise corridor - rail network: © State of Queensland (Department of Transport and Main Roads) 2020

Geocentric Datum of Australia (GDA2020 / MGA zone 56)



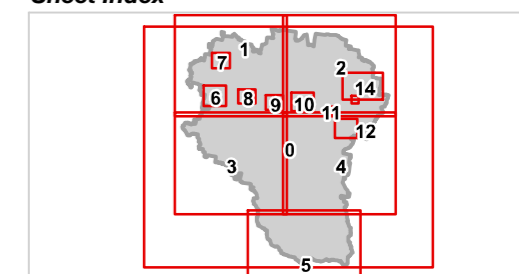
Commencement Date: 22 July 2024

Approx Scale @ A3: 1:30,000



kilometres

Sheet Index





REGIONAL COUNCIL

OM14 Transport noise corridor - information overlay map

Transport corridors

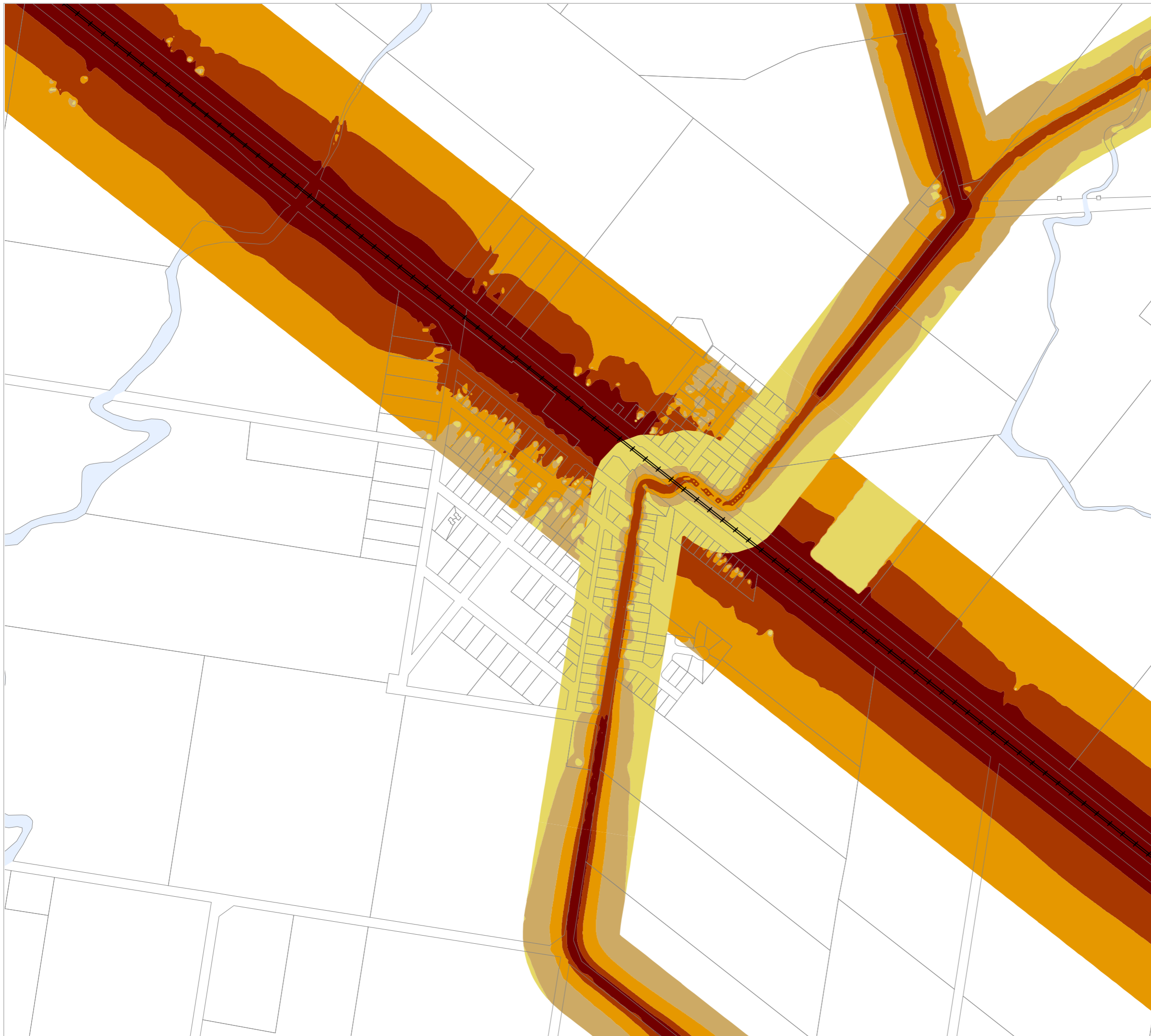
- Future railway corridor
- Future state-controlled road corridor

Transport noise categories

- Category 0: Noise Level < 58 dB(A)
- Category 1: 58 dB(A) =< Noise Level < 63 dB(A)
- Category 2: 63 dB(A) =< Noise Level < 68 dB(A)
- Category 3: 68 dB(A) =< Noise Level < 73 dB(A)
- Category 4: Noise Level >= 73 dB(A)

Other Features

- Railway Network
- Property Boundary
- Local Government Boundary
- Watercourse / Waterbody



NOTE

Refer to online or electronic mapping where layers overlap or labels obstruct the data on the map.

MAP INFORMATION

Based on or contains data sourced from the State Government which gives no warranty in relation to the data (including accuracy, reliability, completeness or suitability) and accepts no liability (including without limitation, liability in negligence) for any loss, damage or costs (including consequential damage) relating to any use of the data.
© Copyright Lockyer Valley Regional Council 2024

DATA SOURCES

Cadastral data weekly - whole of State Queensland, Rail network - Queensland, Baseline roads and tracks - Queensland: © State of Queensland (Department of Resources) 2023. Data sourced 7/12/2020: Noise corridor - State-controlled road (MANDATORY area), Noise corridor - State-controlled road (VOLUNTARY area), Noise corridor - rail network: © State of Queensland (Department of Transport and Main Roads) 2020

Geocentric Datum of Australia (GDA2020 / MGA zone 56)



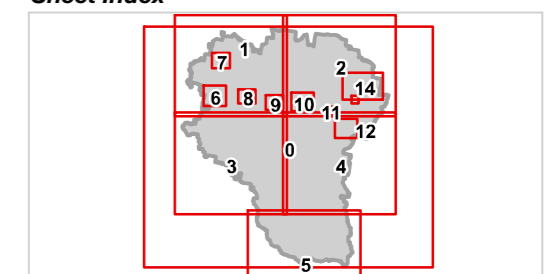
Commencement Date: 22 July 2024

Approx Scale @ A3: 1:7,500

0 0.5

kilometres

Sheet Index





REGIONAL COUNCIL

OM14 Transport noise corridor - information overlay map

Transport corridors

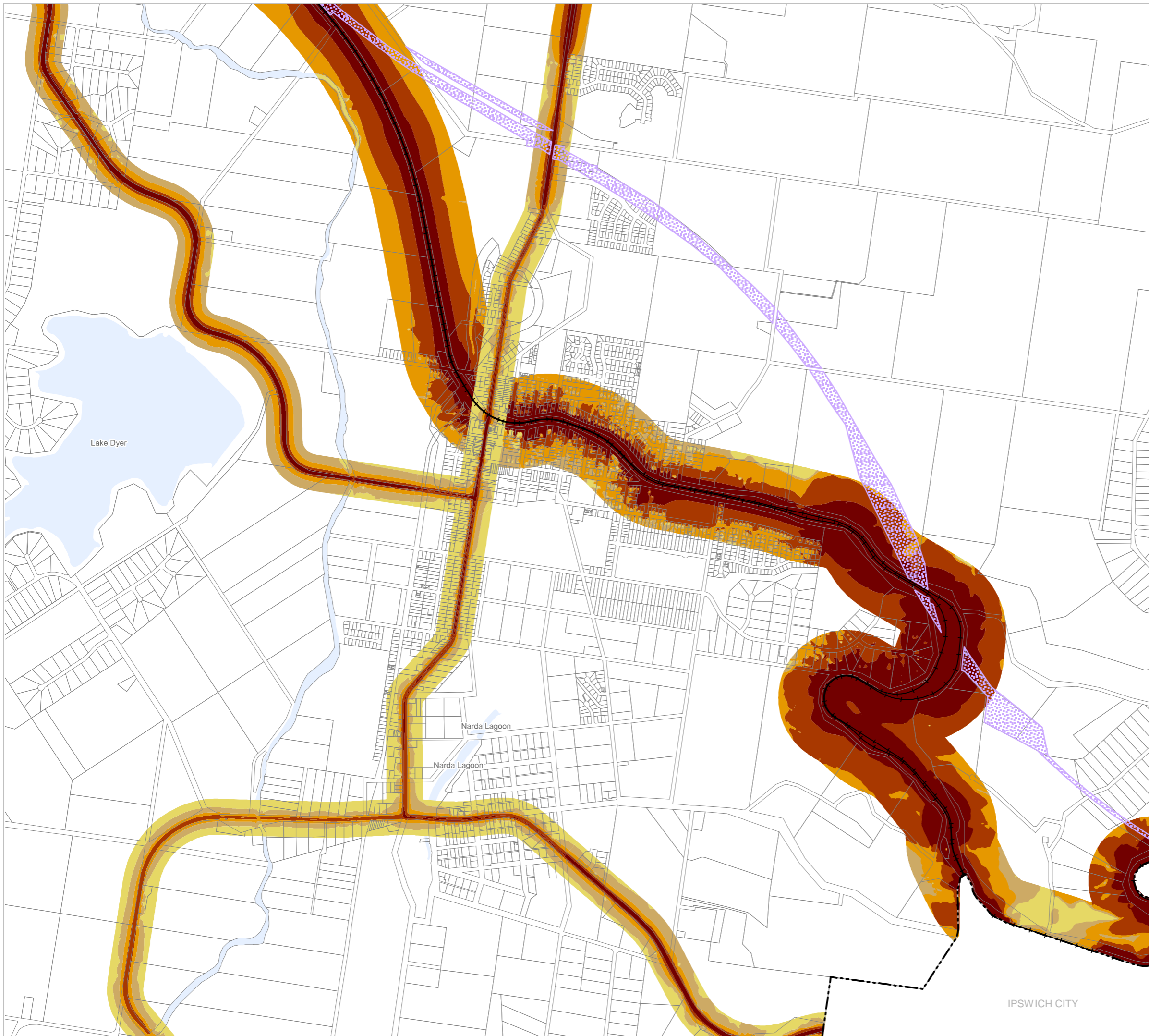
- Future railway corridor
- Future state-controlled road corridor

Transport noise categories

- Category 0: Noise Level < 58 dB(A)
- Category 1: 58 dB(A) =< Noise Level < 63 dB(A)
- Category 2: 63 dB(A) =< Noise Level < 68 dB(A)
- Category 3: 68 dB(A) =< Noise Level < 73 dB(A)
- Category 4: Noise Level >= 73 dB(A)

Other Features

- Railway Network
- Property Boundary
- Local Government Boundary
- Watercourse / Waterbody



NOTE

Refer to online or electronic mapping where layers overlap or labels obstruct the data on the map.

MAP INFORMATION

Based on or contains data sourced from the State Government which gives no warranty in relation to the data (including accuracy, reliability, completeness or suitability) and accepts no liability (including without limitation, liability in negligence) for any loss, damage or costs (including consequential damage) relating to any use of the data.
© Copyright Lockyer Valley Regional Council 2024

DATA SOURCES

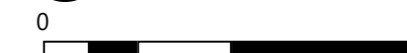
Cadastral data weekly - whole of State Queensland, Rail network - Queensland, Baseline roads and tracks - Queensland: © State of Queensland (Department of Resources) 2023. Data sourced 7/12/2020; Noise corridor - State-controlled road (MANDATORY area), Noise corridor - State-controlled road (VOLUNTARY area), Noise corridor - rail network: © State of Queensland (Department of Transport and Main Roads) 2020

Geocentric Datum of Australia (GDA2020 / MGA zone 56)

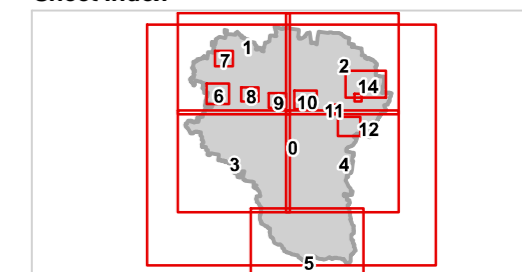


Commencement Date: 22 July 2024

Approx Scale @ A3: 1:20,000



Sheet Index





REGIONAL COUNCIL

OM14 Transport noise corridor - information overlay map

Transport corridors

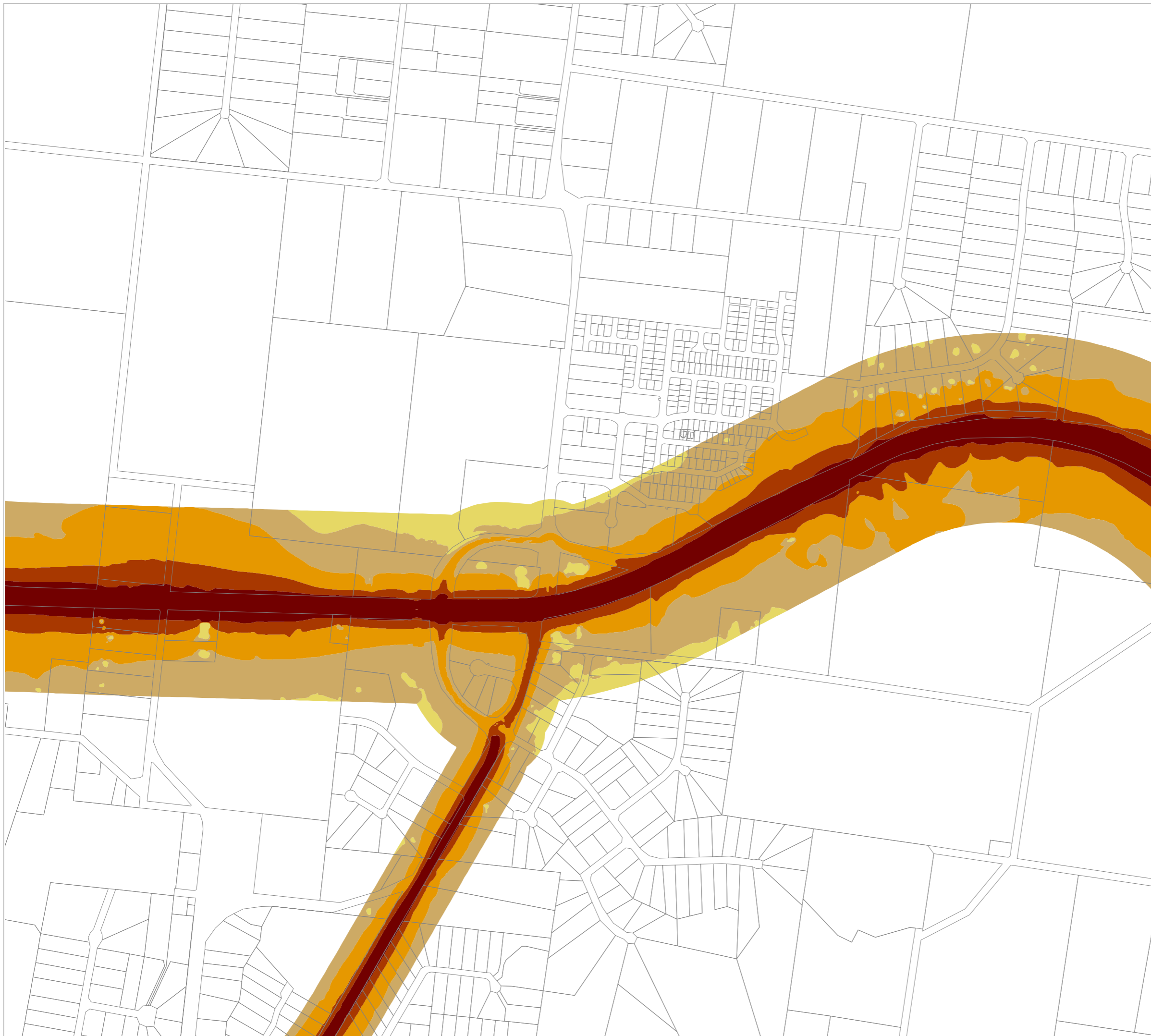
- Future railway corridor
- Future state-controlled road corridor

Transport noise categories

- Category 0: Noise Level < 58 dB(A)
- Category 1: 58 dB(A) <= Noise Level < 63 dB(A)
- Category 2: 63 dB(A) <= Noise Level < 68 dB(A)
- Category 3: 68 dB(A) <= Noise Level < 73 dB(A)
- Category 4: Noise Level >= 73 dB(A)

Other Features

- Railway Network
- Property Boundary
- Local Government Boundary
- Watercourse / Waterbody



NOTE

Refer to online or electronic mapping where layers overlap or labels obstruct the data on the map.

MAP INFORMATION

Based on or contains data sourced from the State Government which gives no warranty in relation to the data (including accuracy, reliability, completeness or suitability) and accepts no liability (including without limitation, liability in negligence) for any loss, damage or costs (including consequential damage) relating to any use of the data.
© Copyright Lockyer Valley Regional Council 2024

DATA SOURCES

Cadastral data weekly - whole of State Queensland, Rail network - Queensland, Baseline roads and tracks - Queensland: © State of Queensland (Department of Resources) 2023. Data sourced 7/12/2020; Noise corridor - State-controlled road (MANDATORY area), Noise corridor - State-controlled road (VOLUNTARY area), Noise corridor - rail network: © State of Queensland (Department of Transport and Main Roads) 2020

Geocentric Datum of Australia (GDA2020 / MGA zone 56)

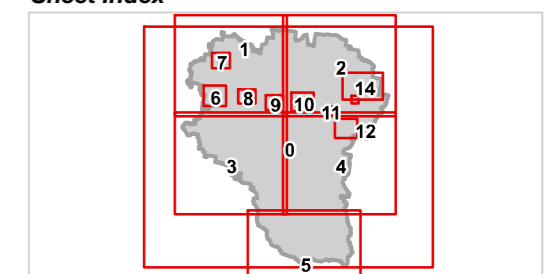


Commencement Date: 22 July 2024

Approx Scale @ A3: 1:10,000



Sheet Index





REGIONAL COUNCIL

OM14 Transport noise corridor - information overlay map

SOMERSET REGIONAL

Transport corridors

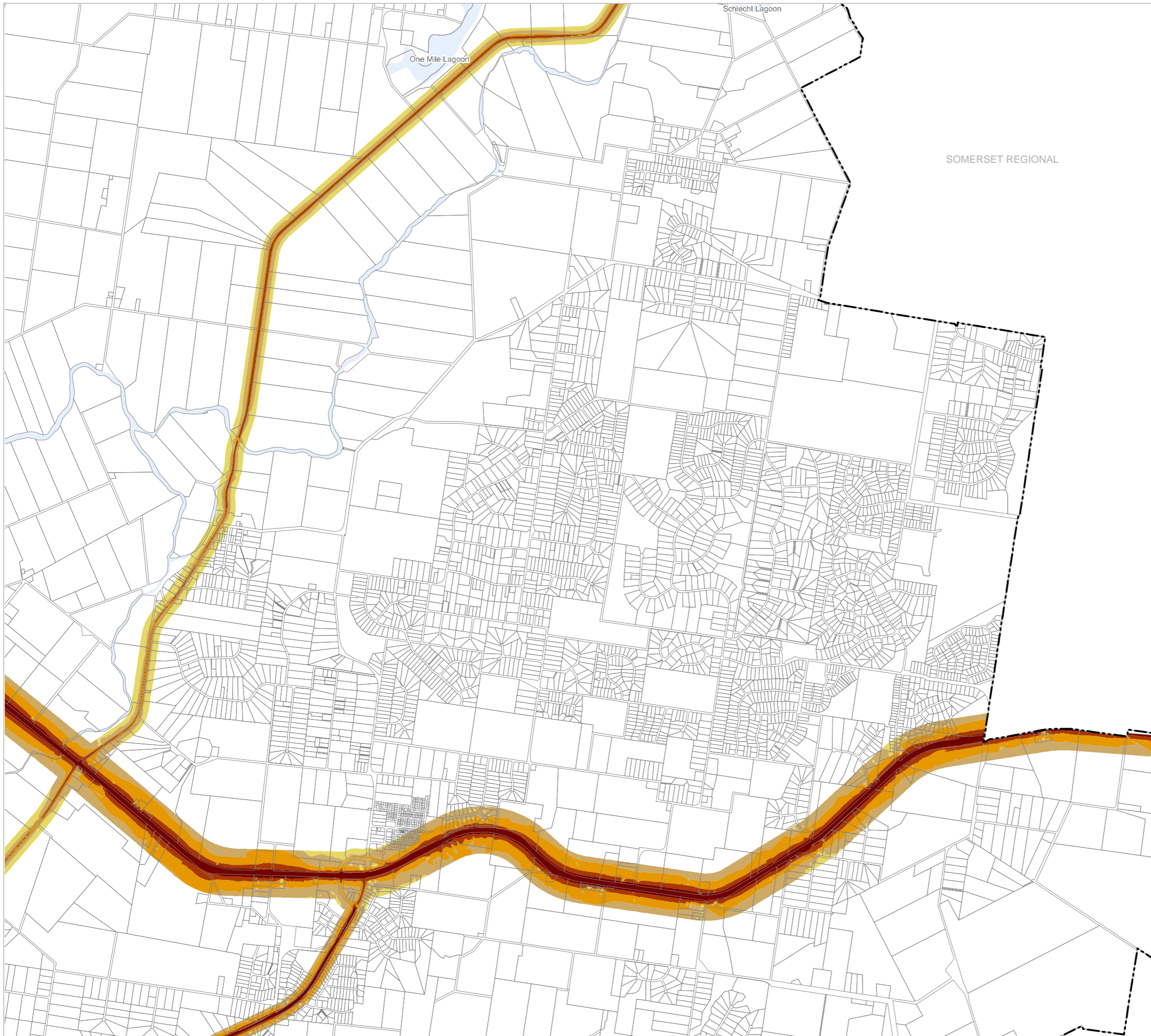
- Future railway corridor
- Future state-controlled road corridor

Transport noise categories

- Category 0: Noise Level < 58 dB(A)
- Category 1: 58 dB(A) =< Noise Level < 63 dB(A)
- Category 2: 63 dB(A) =< Noise Level < 68 dB(A)
- Category 3: 68 dB(A) =< Noise Level < 73 dB(A)
- Category 4: Noise Level >= 73 dB(A)

Other Features

- Railway Network
- Property Boundary
- Local Government Boundary
- Watercourse / Waterbody



NOTE

Refer to online or electronic mapping where layers overlap or labels obstruct the data on the map.

MAP INFORMATION

Based on or contains data sourced from the State Government which gives no warranty in relation to the data (including accuracy, reliability, completeness or suitability) and accepts no liability (including without limitation, liability in negligence) for any loss, damage or costs (including consequential damage) relating to any use of the data.
© Copyright Lockyer Valley Regional Council 2024

DATA SOURCES

Cadastral data weekly - whole of State Queensland, Rail network - Queensland, Baseline roads and tracks - Queensland: © State of Queensland (Department of Resources) 2023. Data sourced 7/12/2020; Noise corridor - State-controlled road (MANDATORY area), Noise corridor - State-controlled road (VOLUNTARY area), Noise corridor - rail network: © State of Queensland (Department of Transport and Main Roads) 2020

Geocentric Datum of Australia (GDA2020 / MGA zone 56)



Commencement Date: 22 July 2024

Approx Scale @ A3: 1:40,000



kilometres

Sheet Index

