



## OM1 Agricultural Land overlay map

### Agricultural Layers

#### Locally Refined

- ALC Class A and B soils
- ALC Class A and B - Separation area

#### Information layers

- Soil conservation plan area

### Other Features

- Major Road
- Railway Network
- Property Boundary
- Local Government Boundary
- Watercourse or Waterbody

### NOTE

Refer to online or electronic mapping where layers overlap or labels obstruct the data on the map.

### MAP INFORMATION

Based on or contains data sourced from the State Government which gives no warranty in relation to the data (including accuracy, reliability, completeness or suitability) and accepts no liability (including without limitation, liability in negligence) for any loss, damage or costs (including consequential damage) relating to any use of the data.  
© Copyright Lockyer Valley Regional Council 2024

### DATA SOURCES

Cadastral data weekly - whole of State Queensland, Rail network - Queensland, Queensland roads and tracks, State controlled roads surveyed centrelines - Queensland, Soil Conservation Plans - Queensland. © State of Queensland (Department of Resources) 2023

Geocentric Datum of Australia (GDA2020 / MGA zone 56)



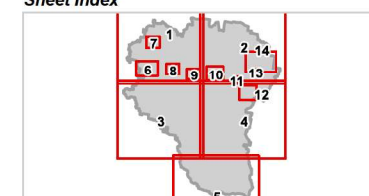
Commencement Date: 22 July 2024

Approx Scale @ A3: 1:250,000

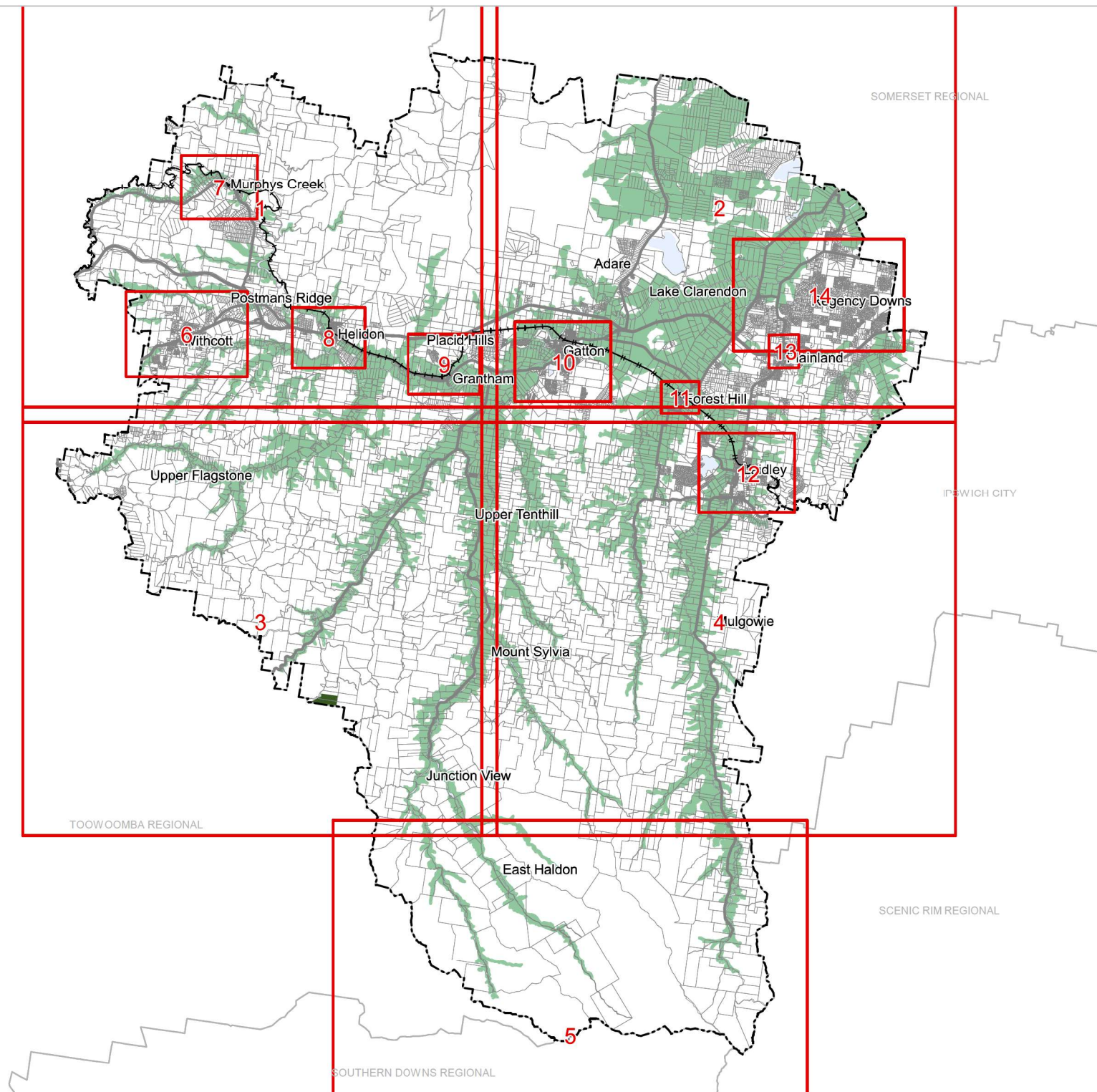


0 10  
kilometres

### Sheet Index



OM1 Agricultural Land overlay  
Local government area-00





REGIONAL COUNCIL

## OM1 Agricultural Land overlay map

### Agricultural Layers

#### Locally Refined

- ALC Class A and B soils
- ALC Class A and B - Separation area

#### Information layers

- Soil conservation plan area

### Other Features

- Major Road
- Railway Network
- Property Boundary
- Local Government Boundary
- Watercourse or Waterbody

### NOTE

Refer to online or electronic mapping where layers overlap or labels obstruct the data on the map.

### MAP INFORMATION

Based on or contains data sourced from the State Government which gives no warranty in relation to the data (including accuracy, reliability, completeness or suitability) and accepts no liability (including without limitation, liability in negligence) for any loss, damage or costs (including consequential damage) relating to any use of the data.  
© Copyright Lockyer Valley Regional Council 2024

### DATA SOURCES

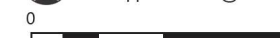
Cadastral data weekly - whole of State Queensland, Rail network - Queensland, Queensland roads and tracks, State controlled roads surveyed centreline - Queensland, Soil Conservation Plans - Queensland. © State of Queensland (Department of Resources) 2023

Geocentric Datum of Australia (GDA2020 / MGA zone 56)



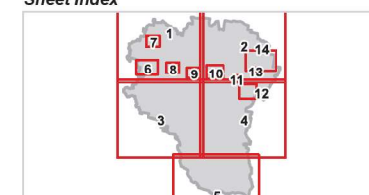
Commencement Date: 22 July 2024

Approx Scale @ A3: 1:100,000



kilometres

### Sheet Index



OM1 Agricultural Land overlay  
LGA north-west-01



## OM1 Agricultural Land overlay map

### Agricultural Layers

#### Locally Refined

- ALC Class A and B soils
- ALC Class A and B - Separation area

### Information layers

- Soil conservation plan area

### Other Features

- Major Road
- Railway Network
- Property Boundary
- Local Government Boundary
- Watercourse or Waterbody

### NOTE

Refer to online or electronic mapping where layers overlap or labels obstruct the data on the map.

### MAP INFORMATION

Based on or contains data sourced from the State Government which gives no warranty in relation to the data (including accuracy, reliability, completeness or suitability) and accepts no liability (including without limitation, liability in negligence) for any loss, damage or costs (including consequential damage) relating to any use of the data.  
© Copyright Lockyer Valley Regional Council 2024

### DATA SOURCES

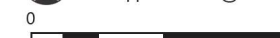
Cadastral data weekly - whole of State Queensland, Rail network - Queensland, Queensland roads and tracks, State controlled roads surveyed centreline - Queensland, Soil Conservation Plans - Queensland: © State of Queensland (Department of Resources) 2023

Geocentric Datum of Australia (GDA2020 / MGA zone 56)



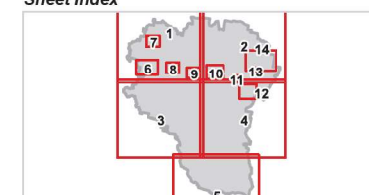
Commencement Date: 22 July 2024

Approx Scale @ A3: 1:100,000



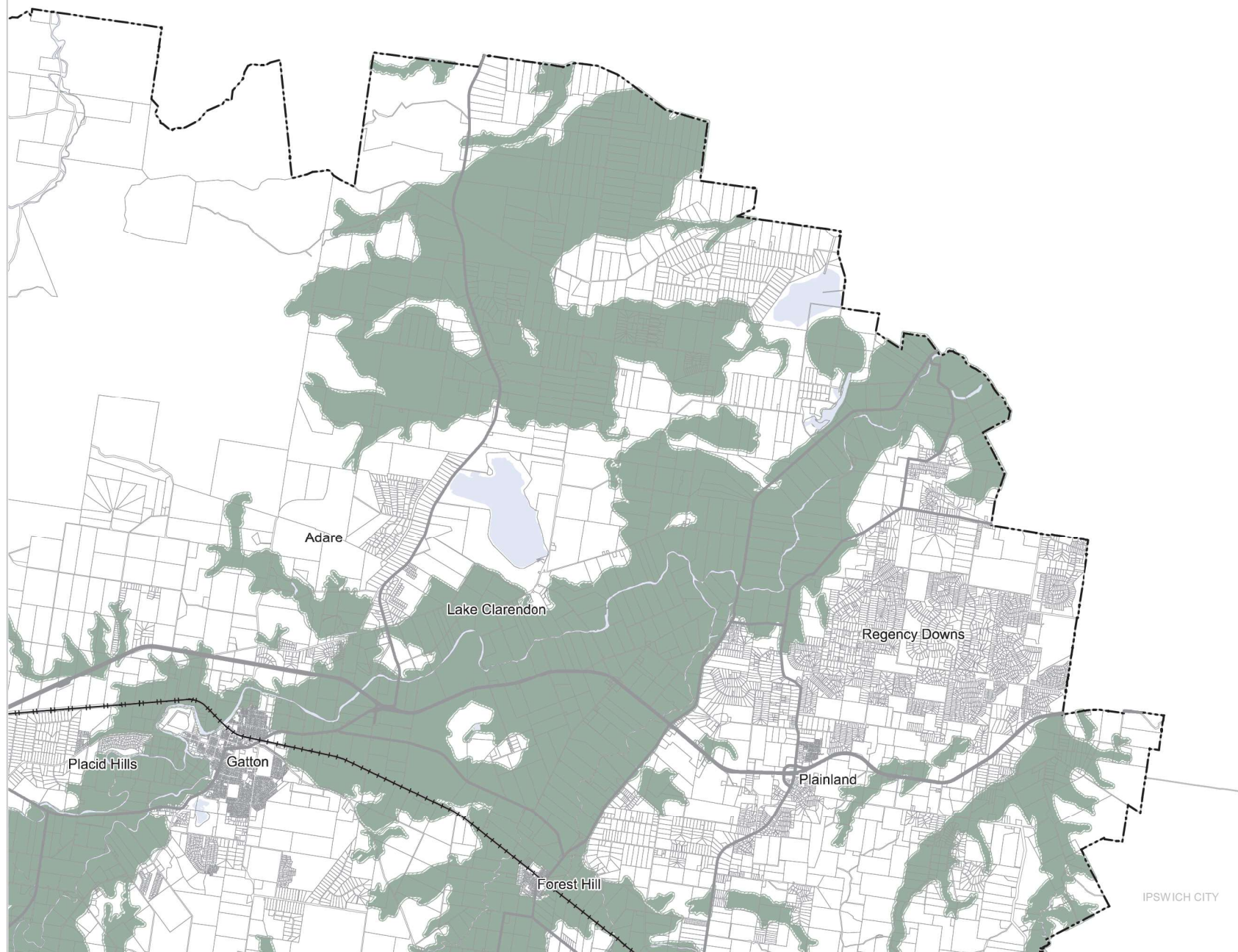
kilometres

### Sheet Index



OM1 Agricultural Land overlay  
LGA north-east-02

SOMERSET REGIONAL



IPSWICH CITY



## OM1 Agricultural Land overlay map

### Agricultural Layers

#### Locally Refined

- ALC Class A and B soils
- ALC Class A and B - Separation area

#### Information layers

- Soil conservation plan area

### Other Features

- Major Road
- Railway Network
- Property Boundary
- Local Government Boundary
- Watercourse or Waterbody

### NOTE

Refer to online or electronic mapping where layers overlap or labels obstruct the data on the map.

### MAP INFORMATION

Based on or contains data sourced from the State Government which gives no warranty in relation to the data (including accuracy, reliability, completeness or suitability) and accepts no liability (including without limitation, liability in negligence) for any loss, damage or costs (including consequential damage) relating to any use of the data.  
© Copyright Lockyer Valley Regional Council 2024

### DATA SOURCES

Cadastral data weekly - whole of State Queensland, Rail network - Queensland, Queensland roads and tracks, State controlled roads surveyed centrelines - Queensland, Soil Conservation Plans - Queensland. © State of Queensland (Department of Resources) 2023

Geocentric Datum of Australia (GDA2020 / MGA zone 56)

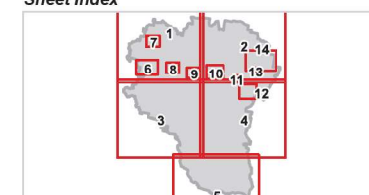


Commencement Date: 22 July 2024

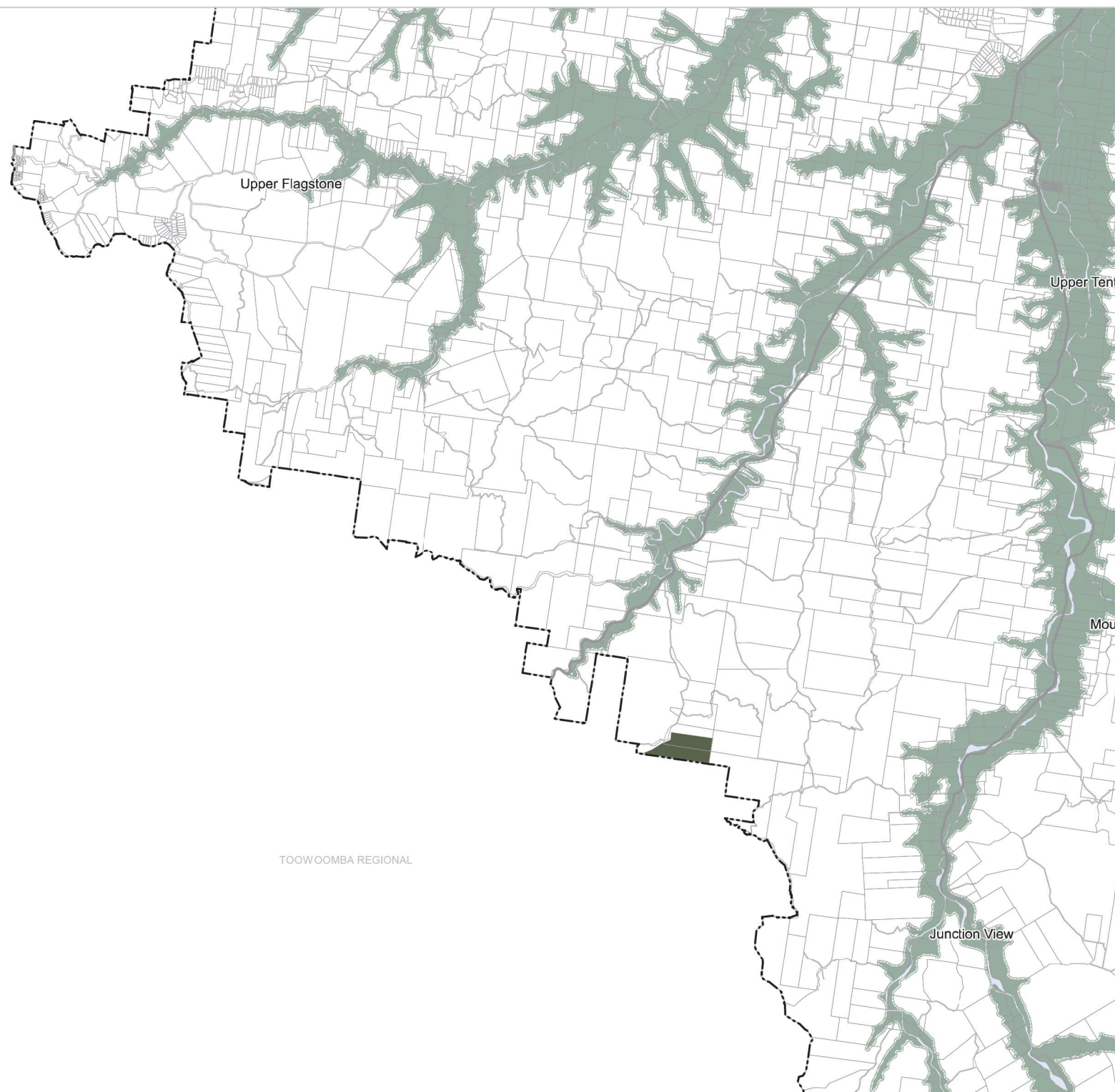
Approx Scale @ A3: 1:100,000



### Sheet Index



OM1 Agricultural Land overlay  
LGA south-west-03





REGIONAL COUNCIL

## OM1 Agricultural Land overlay map

### Agricultural Layers

#### Locally Refined

- ALC Class A and B soils
- ALC Class A and B - Separation area

#### Information layers

- Soil conservation plan area

### Other Features

- Major Road
- Railway Network
- Property Boundary
- Local Government Boundary
- Watercourse or Waterbody

### NOTE

Refer to online or electronic mapping where layers overlap or labels obstruct the data on the map.

### MAP INFORMATION

Based on or contains data sourced from the State Government which gives no warranty in relation to the data (including accuracy, reliability, completeness or suitability) and accepts no liability (including without limitation, liability in negligence) for any loss, damage or costs (including consequential damage) relating to any use of the data.  
© Copyright Lockyer Valley Regional Council 2024

### DATA SOURCES

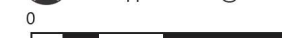
Cadastral data weekly - whole of State Queensland, Rail network - Queensland, Queensland roads and tracks, State controlled roads surveyed centrelines - Queensland, Soil Conservation Plans - Queensland. © State of Queensland (Department of Resources) 2023

Geocentric Datum of Australia (GDA2020 / MGA zone 56)



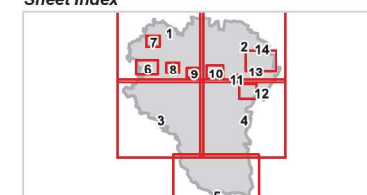
Commencement Date: 22 July 2024

Approx Scale @ A3: 1:100,000



kilometres

### Sheet Index



OM1 Agricultural Land overlay  
LGA south-east-04



# Lockyer Valley Regional Council Planning Scheme

REGIONAL COUNCIL

## OM1 Agricultural Land overlay map

### Agricultural Layers

Locally Refined

- ALC Class A and B soils
- ALC Class A and B - Separation area

### Information layers

- Soil conservation plan area

### Other Features

- Major Road
- Railway Network
- Property Boundary
- Local Government Boundary
- Watercourse or Waterbody

### NOTE

Refer to online or electronic mapping where layers overlap or labels obstruct the data on the map.

### MAP INFORMATION

Based on or contains data sourced from the State Government which gives no warranty in relation to the data (including accuracy, reliability, completeness or suitability) and accepts no liability (including without limitation, liability in negligence) for any loss, damage or costs (including consequential damage) relating to any use of the data.  
© Copyright Lockyer Valley Regional Council 2024

### DATA SOURCES

Cadastral data weekly - whole of State Queensland, Rail network - Queensland, Queensland roads and tracks, State controlled roads surveyed centreline - Queensland, Soil Conservation Plans - Queensland: © State of Queensland (Department of Resources) 2023

Geocentric Datum of Australia (GDA2020 / MGA zone 56)

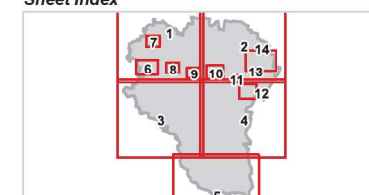


Commencement Date: 22 July 2024

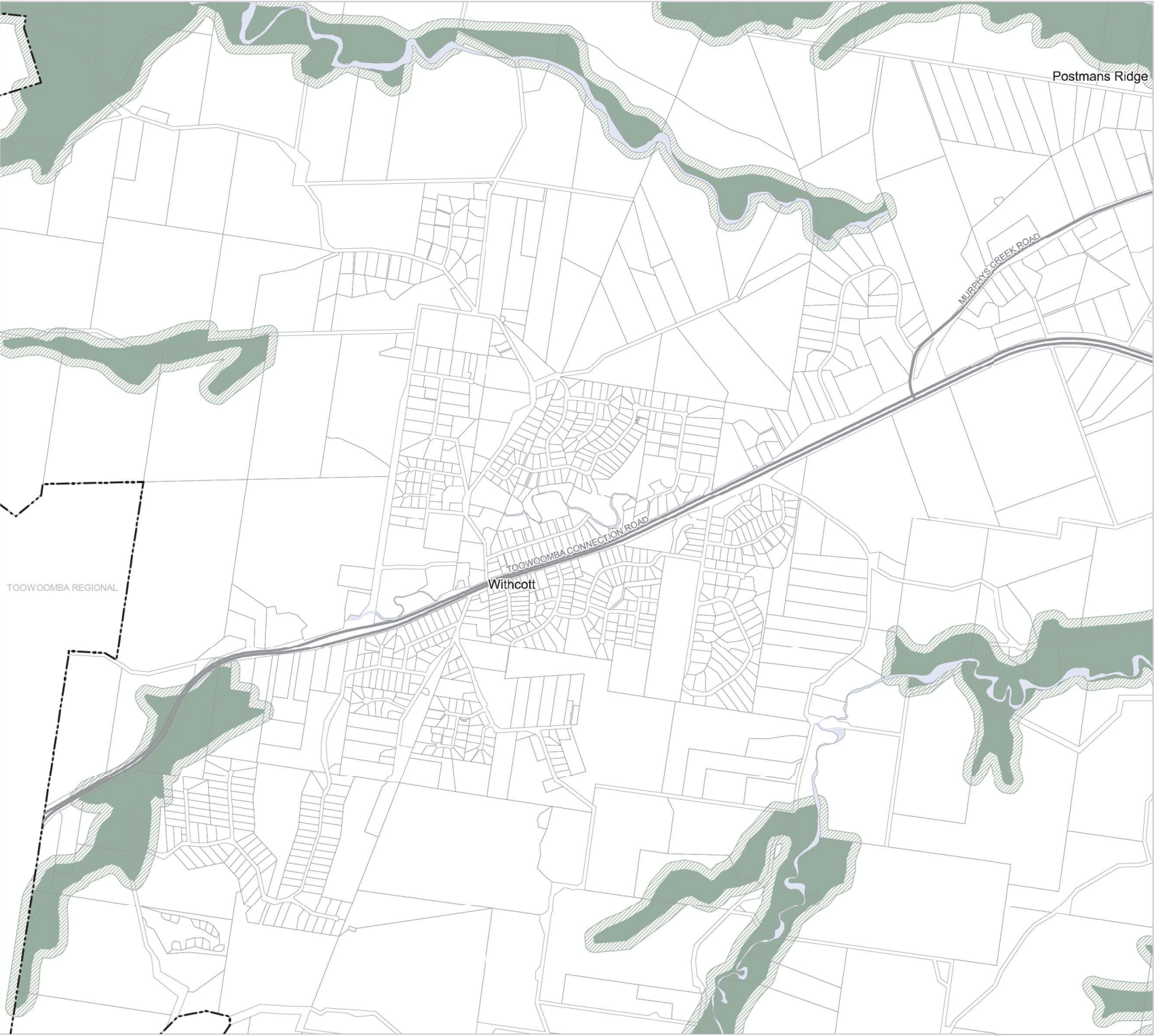
Approx Scale @ A3: 1:100,000



### Sheet Index



OM1 Agricultural Land overlay  
LGA south-05



# Lockyer Valley Regional Council Planning Scheme

## OM1 Agricultural Land overlay map

### Agricultural Layers

Locally Refined

- ALC Class A and B soils
- ALC Class A and B - Separation area

### Information layers

- Soil conservation plan area

### Other Features

- Major Road
- Railway Network
- Property Boundary
- Local Government Boundary
- Watercourse or Waterbody

### NOTE

Refer to online or electronic mapping where layers overlap or labels obstruct the data on the map.

### MAP INFORMATION

Based on or contains data sourced from the State Government which gives no warranty in relation to the data (including accuracy, reliability, completeness or suitability) and accepts no liability (including without limitation, liability in negligence) for any loss, damage or costs (including consequential damage) relating to any use of the data.  
© Copyright Lockyer Valley Regional Council 2024

### DATA SOURCES

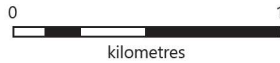
Cadastral data weekly - whole of State Queensland, Rail network - Queensland, Queensland roads and tracks, State controlled roads surveyed centrelines - Queensland, Soil Conservation Plans - Queensland: © State of Queensland (Department of Resources) 2023

Geocentric Datum of Australia (GDA2020 / MGA zone 56)

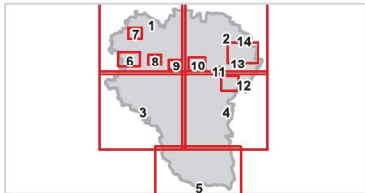


Commencement Date: 22 July 2024

Approx Scale @ A3: 1:20,000



### Sheet Index



OM1 Agricultural Land overlay  
Withcott-06



REGIONAL COUNCIL

OM1 Agricultural Land overlay map

Agricultural Layers

Locally Refined

- ALC Class A and B soils
- ALC Class A and B - Separation area

Information layers

- Soil conservation plan area

Other Features

- Major Road
- Railway Network
- Property Boundary
- Local Government Boundary
- Watercourse or Waterbody

NOTE

Refer to online or electronic mapping where layers overlap or labels obstruct the data on the map.

MAP INFORMATION

Based on or contains data sourced from the State Government which gives no warranty in relation to the data (including accuracy, reliability, completeness or suitability) and accepts no liability (including without limitation, liability in negligence) for any loss, damage or costs (including consequential damage) relating to any use of the data.  
© Copyright Lockyer Valley Regional Council 2024

DATA SOURCES

Cadastral data weekly - whole of State Queensland, Rail network - Queensland, Queensland roads and tracks, State controlled roads surveyed centrelines - Queensland, Soil Conservation Plans - Queensland. © State of Queensland (Department of Resources) 2023

Geocentric Datum of Australia (GDA2020 / MGA zone 56)



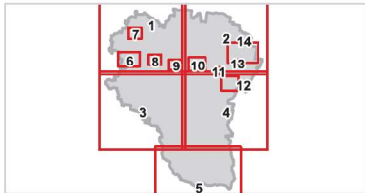
Commencement Date: 22 July 2024

Approx Scale @ A3: 1:15,000



kilometres

Sheet Index



OM1 Agricultural Land overlay  
Murphys Creek-07



REGIONAL COUNCIL

## OM1 Agricultural Land overlay map

### Agricultural Layers

#### Locally Refined

- ALC Class A and B soils
- ALC Class A and B - Separation area

### Information layers

- Soil conservation plan area

### Other Features

- Major Road
- Railway Network
- Property Boundary
- Local Government Boundary
- Watercourse or Waterbody

### NOTE

Refer to online or electronic mapping where layers overlap or labels obstruct the data on the map.

### MAP INFORMATION

Based on or contains data sourced from the State Government which gives no warranty in relation to the data (including accuracy, reliability, completeness or suitability) and accepts no liability (including without limitation, liability in negligence) for any loss, damage or costs (including consequential damage) relating to any use of the data.  
© Copyright Lockyer Valley Regional Council 2024

### DATA SOURCES

Cadastral data weekly - whole of State Queensland, Rail network - Queensland, Queensland roads and tracks, State controlled roads surveyed centreline - Queensland, Soil Conservation Plans - Queensland © State of Queensland (Department of Resources) 2023

Geocentric Datum of Australia (GDA2020 / MGA zone 56)



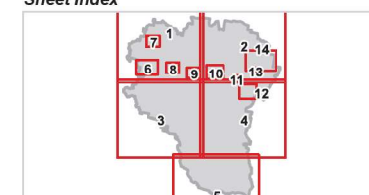
Commencement Date: 22 July 2024

Approx Scale @ A3: 1:15,000



kilometres

### Sheet Index



OM1 Agricultural Land overlay  
Helidon-08



Lockyer Valley  
Regional Council  
Planning Scheme

REGIONAL COUNCIL

OM1 Agricultural Land overlay map

Agricultural Layers  
*Locally Refined*

- ALC Class A and B soils
- ALC Class A and B - Separation area

Information layers

- Soil conservation plan area

Other Features

- Major Road
- Railway Network
- Property Boundary
- Local Government Boundary
- Watercourse or Waterbody

**NOTE**

Refer to online or electronic mapping where layers overlap or labels obstruct the data on the map.

**MAP INFORMATION**

Based on or contains data sourced from the State Government which gives no warranty in relation to the data (including accuracy, reliability, completeness or suitability) and accepts no liability (including without limitation, liability in negligence) for any loss, damage or costs (including consequential damage) relating to any use of the data.  
© Copyright Lockyer Valley Regional Council 2024

**DATA SOURCES**

Cadastral data weekly - whole of State Queensland, Rail network - Queensland, Queensland roads and tracks, State controlled roads surveyed centreline - Queensland, Soil Conservation Plans - Queensland © State of Queensland (Department of Resources) 2023

Geocentric Datum of Australia (GDA2020 / MGA zone 56)



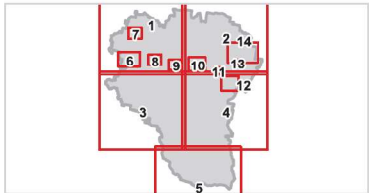
Commencement Date: 22 July 2024

Approx Scale @ A3: 1:15,000



kilometres

**Sheet Index**



OM1 Agricultural Land overlay  
Grantham-09



## OM1 Agricultural Land overlay map

### Agricultural Layers

#### Locally Refined

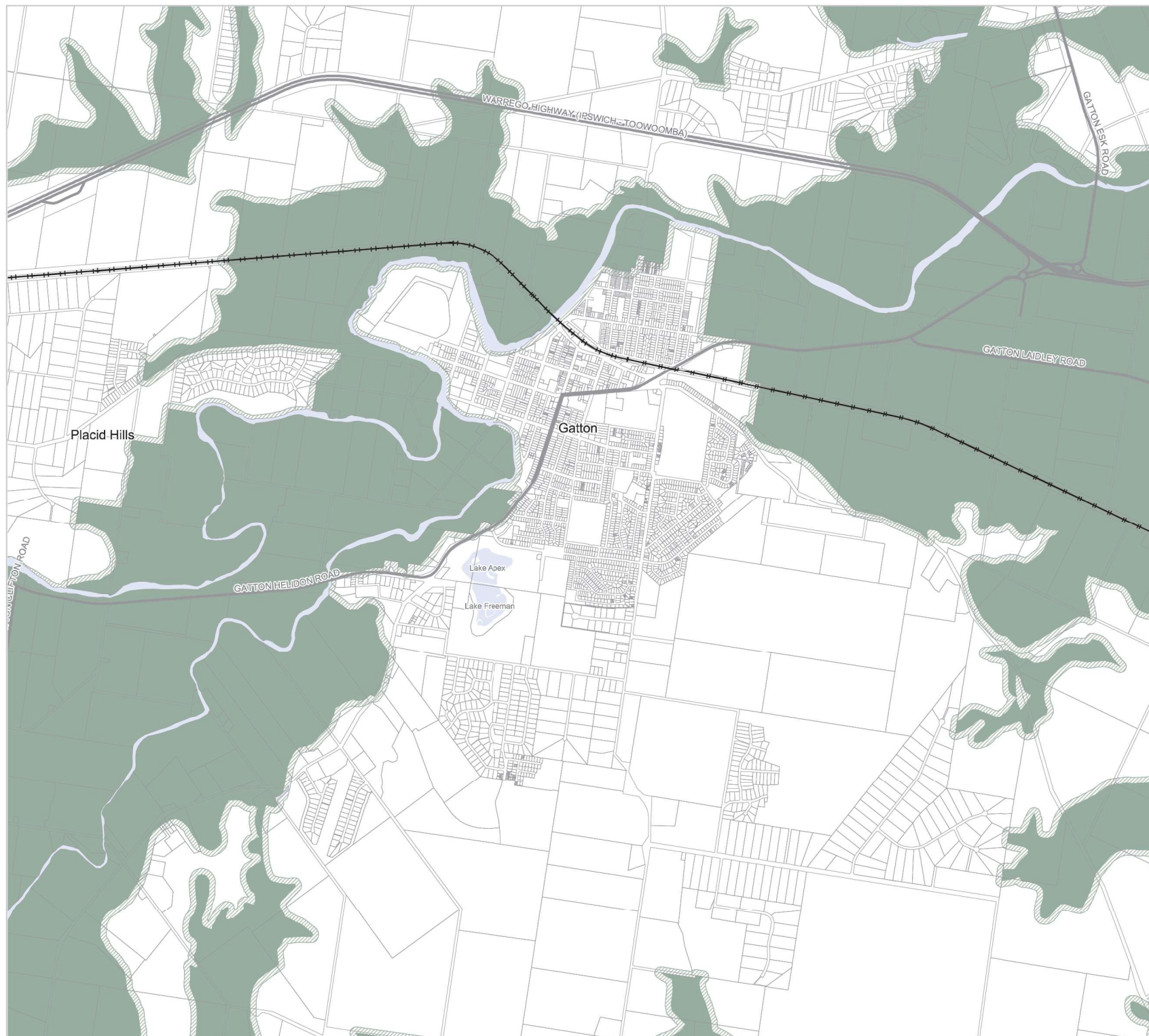
- ALC Class A and B soils
- ALC Class A and B - Separation area

### Information layers

- Soil conservation plan area

### Other Features

- Major Road
- Railway Network
- Property Boundary
- Local Government Boundary
- Watercourse or Waterbody



### NOTE

Refer to online or electronic mapping where layers overlap or labels obstruct the data on the map.

### MAP INFORMATION

Based on or contains data sourced from the State Government which gives no warranty in relation to the data (including accuracy, reliability, completeness or suitability) and accepts no liability (including without limitation, liability in negligence) for any loss, damage or costs (including consequential damage) relating to any use of the data.  
© Copyright Lockyer Valley Regional Council 2024

### DATA SOURCES

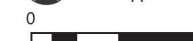
Cadastral data weekly - whole of State Queensland, Rail network - Queensland, Queensland roads and tracks, State controlled roads surveyed centrelines - Queensland, Soil Conservation Plans - Queensland. © State of Queensland (Department of Resources) 2023

Geocentric Datum of Australia (GDA2020 / MGA zone 56)



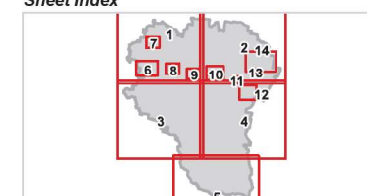
Commencement Date: 22 July 2024

Approx Scale @ A3: 1:30,000



kilometres

### Sheet Index



OM1 Agricultural Land overlay  
Gatton-10



REGIONAL COUNCIL

## OM1 Agricultural Land overlay map

### Agricultural Layers

#### Locally Refined

- ALC Class A and B soils
- ALC Class A and B - Separation area

### Information layers

- Soil conservation plan area

### Other Features

- Major Road
- Railway Network
- Property Boundary
- Local Government Boundary
- Watercourse or Waterbody

### NOTE

Refer to online or electronic mapping where layers overlap or labels obstruct the data on the map.

### MAP INFORMATION

Based on or contains data sourced from the State Government which gives no warranty in relation to the data (including accuracy, reliability, completeness or suitability) and accepts no liability (including without limitation, liability in negligence) for any loss, damage or costs (including consequential damage) relating to any use of the data.  
© Copyright Lockyer Valley Regional Council 2024

### DATA SOURCES

Cadastral data weekly - whole of State Queensland, Rail network - Queensland, Queensland roads and tracks, State controlled roads surveyed centrelines - Queensland, Soil Conservation Plans - Queensland © State of Queensland (Department of Resources) 2023

Geocentric Datum of Australia (GDA2020 / MGA zone 56)

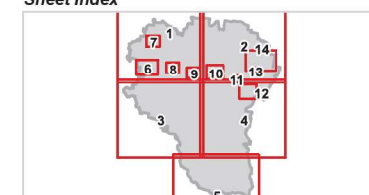


Commencement Date: 22 July 2024

Approx Scale @ A3: 1:7,500



### Sheet Index



OM1 Agricultural Land overlay  
Forest Hill-11



## OM1 Agricultural Land overlay map

### Agricultural Layers

#### Locally Refined

- ALC Class A and B soils
- ALC Class A and B - Separation area

### Information layers

- Soil conservation plan area

### Other Features

- Major Road
- Railway Network
- Property Boundary
- Local Government Boundary
- Watercourse or Waterbody

### NOTE

Refer to online or electronic mapping where layers overlap or labels obstruct the data on the map.

### MAP INFORMATION

Based on or contains data sourced from the State Government which gives no warranty in relation to the data (including accuracy, reliability, completeness or suitability) and accepts no liability (including without limitation, liability in negligence) for any loss, damage or costs (including consequential damage) relating to any use of the data.

### DATA SOURCES

Cadastral data weekly - whole of State Queensland, Rail network - Queensland, Queensland roads and tracks, State controlled roads surveyed centrelines - Queensland, Soil Conservation Plans - Queensland: © State of Queensland (Department of Resources) 2023

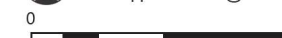
© Copyright Lockyer Valley Regional Council 2024

Geocentric Datum of Australia (GDA2020 / MGA zone 56)



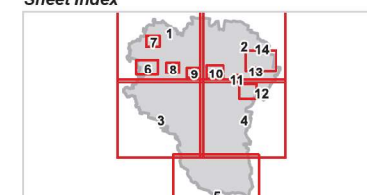
Commencement Date: 22 July 2024

Approx Scale @ A3: 1:20,000

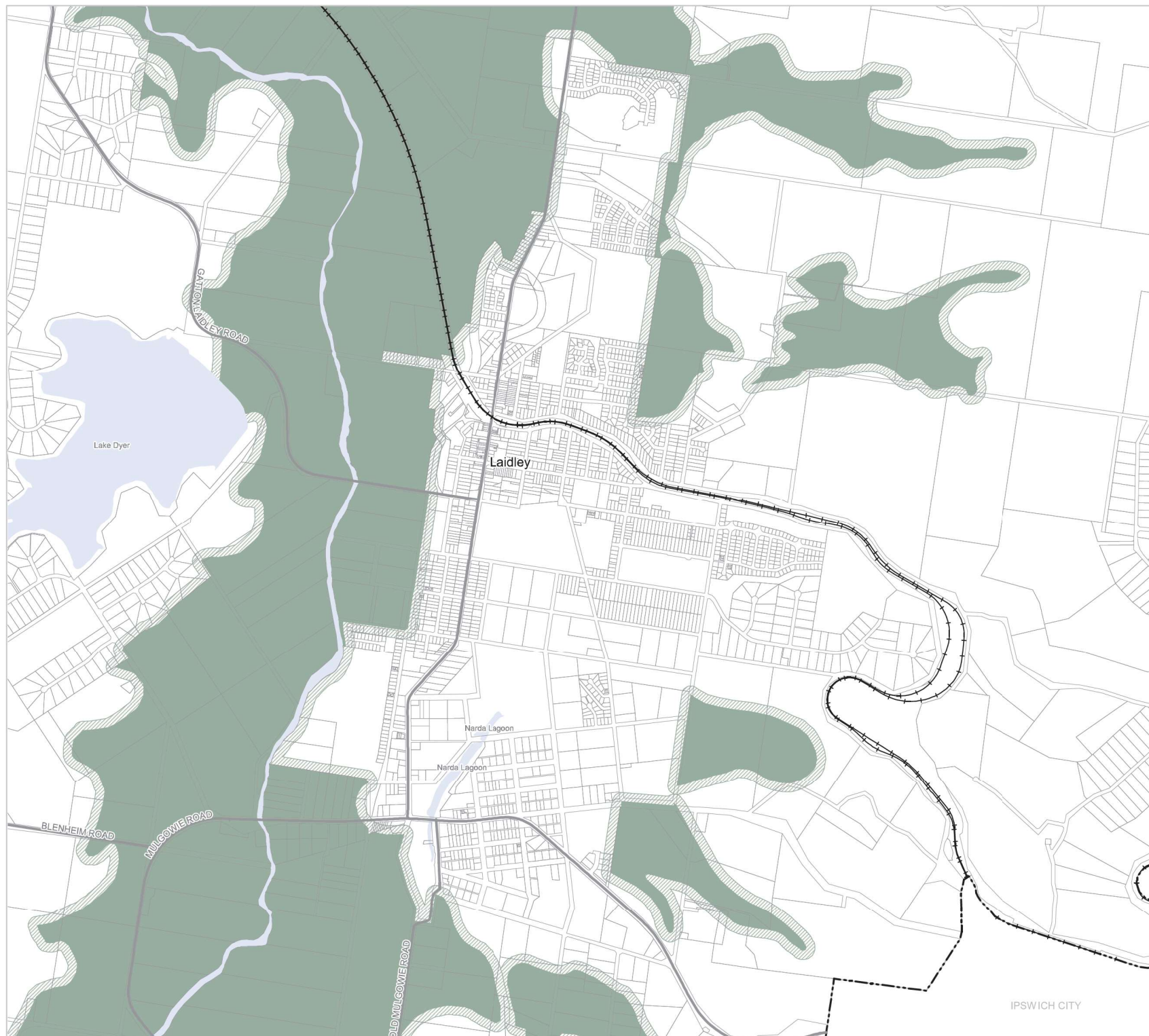


kilometres

### Sheet Index



OM1 Agricultural Land overlay  
Laidley-12





REGIONAL COUNCIL

## OM1 Agricultural Land overlay map

### Agricultural Layers

Locally Refined

- ALC Class A and B soils
- ALC Class A and B - Separation area

### Information layers

- Soil conservation plan area

### Other Features

- Major Road
- Railway Network
- Property Boundary
- Local Government Boundary
- Watercourse or Waterbody

### NOTE

Refer to online or electronic mapping where layers overlap or labels obstruct the data on the map.

### MAP INFORMATION

Based on or contains data sourced from the State Government which gives no warranty in relation to the data (including accuracy, reliability, completeness or suitability) and accepts no liability (including without limitation, liability in negligence) for any loss, damage or costs (including consequential damage) relating to any use of the data.  
© Copyright Lockyer Valley Regional Council 2024

### DATA SOURCES

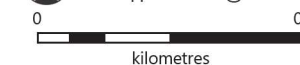
Cadastral data weekly - whole of State Queensland, Rail network - Queensland, Queensland roads and tracks, State controlled roads surveyed centreline - Queensland, Soil Conservation Plans - Queensland. © State of Queensland (Department of Resources) 2023

Geocentric Datum of Australia (GDA2020 / MGA zone 56)

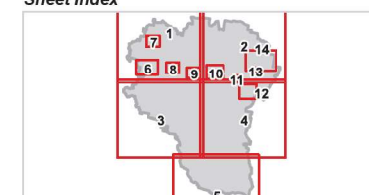


Commencement Date: 22 July 2024

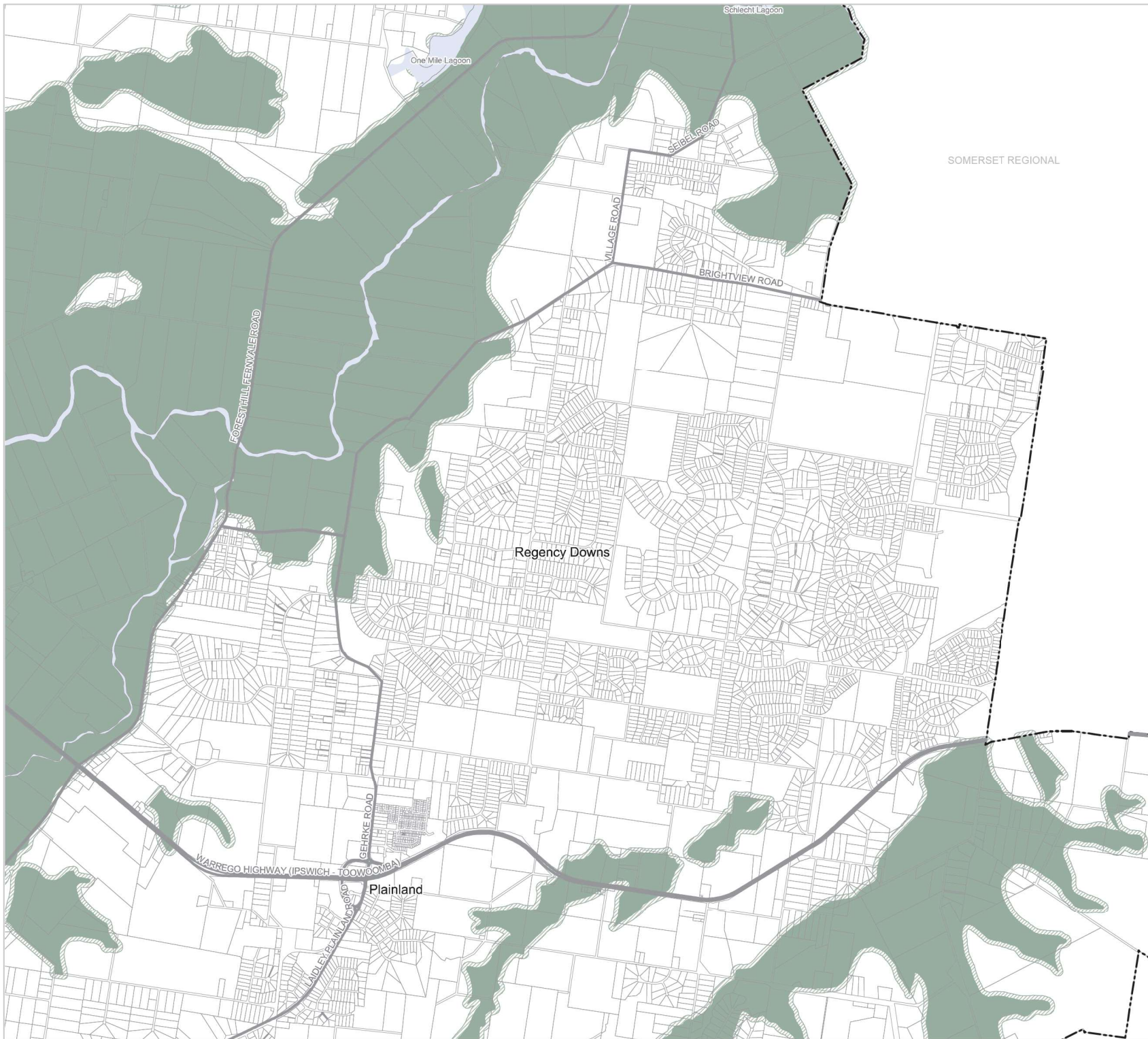
Approx Scale @ A3: 1:10,000



### Sheet Index



OM1 Agricultural Land overlay  
Plainland-13



# Lockyer Valley Regional Council Planning Scheme

REGIONAL COUNCIL

## OM1 Agricultural Land overlay map

### Agricultural Layers

*Locally Refined*

- ALC Class A and B soils
- ALC Class A and B - Separation area

### Information layers

- Soil conservation plan area

### Other Features

- Major Road
- Railway Network
- Property Boundary
- Local Government Boundary
- Watercourse or Waterbody

### NOTE

Refer to online or electronic mapping where layers overlap or labels obstruct the data on the map.

### MAP INFORMATION

Based on or contains data sourced from the State Government which gives no warranty in relation to the data (including accuracy, reliability, completeness or suitability) and accepts no liability (including without limitation, liability in negligence) for any loss, damage or costs (including consequential damage) relating to any use of the data.  
© Copyright Lockyer Valley Regional Council 2024

### DATA SOURCES

Cadastral data weekly - whole of State Queensland, Rail network - Queensland, Queensland roads and tracks, State controlled roads surveyed centreline - Queensland, Soil Conservation Plans - Queensland. © State of Queensland (Department of Resources) 2023

Geocentric Datum of Australia (GDA2020 / MGA zone 56)

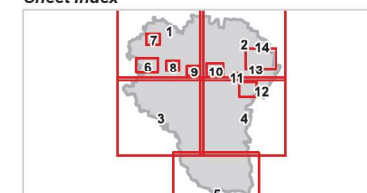


Commencement Date: 22 July 2024

Approx Scale @ A3: 1:40,000



### Sheet Index



OM1 Agricultural Land overlay  
Regency Downs-14