



REGIONAL COUNCIL

OM3A Biodiversity - Ecological Areas overlay map

Matters of State Environmental Significance (MSES)

- Protected Area
- Regulated Vegetation
- Legally Secured Offset

Matters of Local Environmental Significance (MLES)

- Biodiversity Area
- Ecological Corridor

Other Features

- Major Road
- Railway Network
- Property Boundary
- Local Government Boundary
- Watercourse or Waterbody

NOTE

Refer to online or electronic mapping where layers overlap or labels obstruct the data on the map.

MAP INFORMATION

Based on or contains data sourced from the State Government which gives no warranty in relation to the data (including accuracy, reliability, completeness or suitability) and accepts no liability (including without limitation, liability in negligence) for any loss, damage or costs (including consequential damage) relating to any use of the data.

© Copyright Lockyer Valley Regional Council 2024

DATA SOURCES

Cadastral data weekly - whole of State Queensland, Rail network - Queensland, Queensland roads and tracks, State controlled roads surveyed centreline - Queensland © State of Queensland (Department of Resources) 2021, 2022. MSES - Protected area - estates, MSES - Protected area - nature refuges, MSES - Legally secured offset area - offset register, MSES - Regulated vegetation - intersecting a watercourse, MSES - Regulated vegetation - 100m from wetland, MSES - Regulated vegetation - essential habitat, MSES - Regulated vegetation - category B endangered or of concern, MSES - Regulated vegetation - category C endangered or of concern: © State of Queensland (Department of Environment and Science) 2023

Geocentric Datum of Australia (GDA2020 / MGA zone 56)



Commencement Date: 22 July 2024

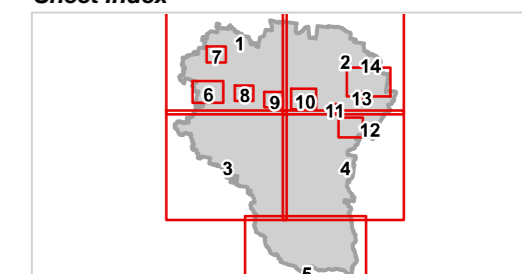
Approx Scale @ A3: 1:250,000

0 10

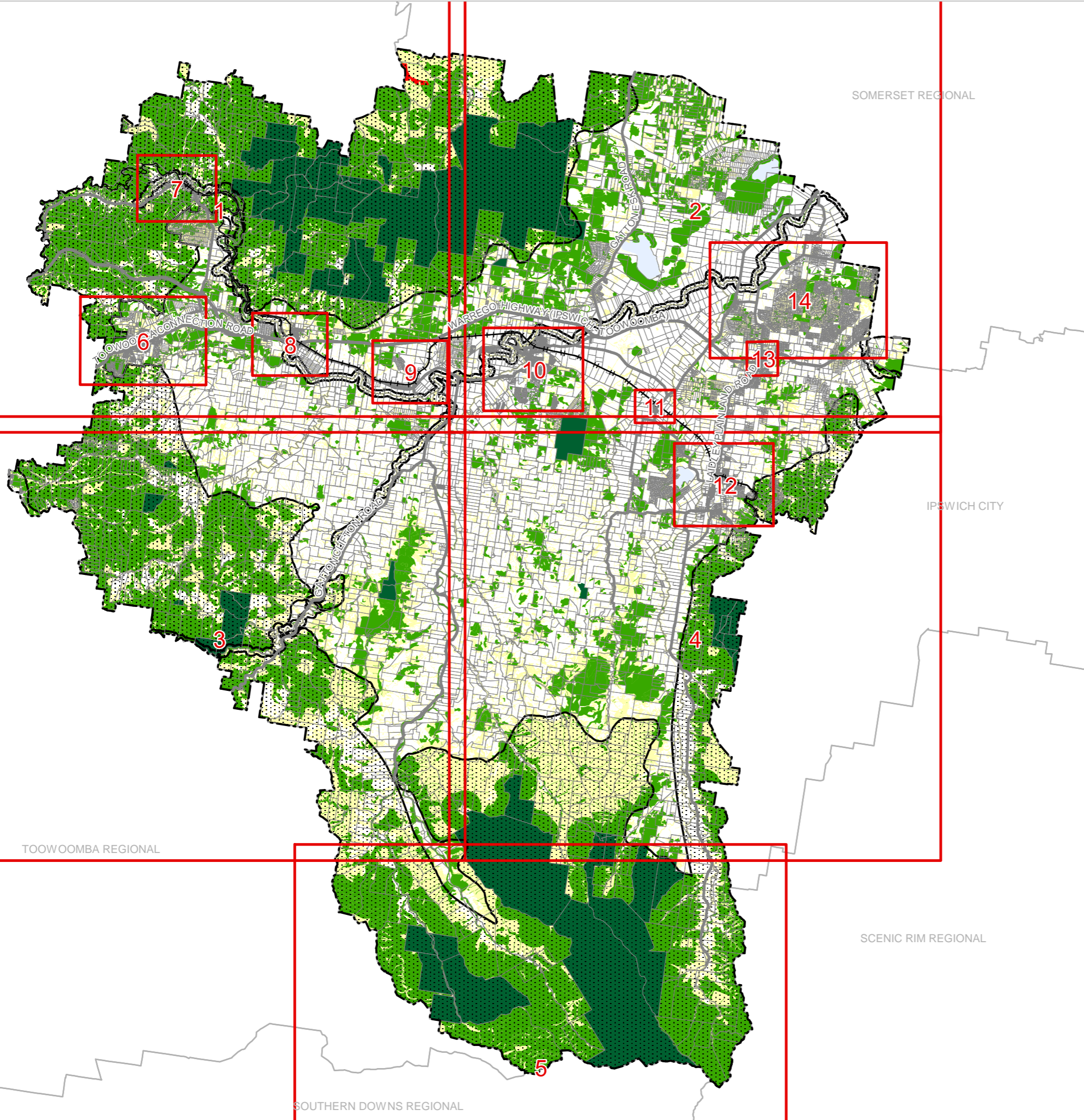


kilometres

Sheet Index



OM3A Biodiversity - Ecological Areas overlay Local government area-00



SOMERSET REGIONAL

IPSWICH CITY

TOOWOOMBA REGIONAL

SCENIC RIM REGIONAL

SOUTHERN DOWNS REGIONAL





REGIONAL COUNCIL

### OM3A Biodiversity - Ecological Areas overlay map

#### Matters of State Environmental Significance (MSES)

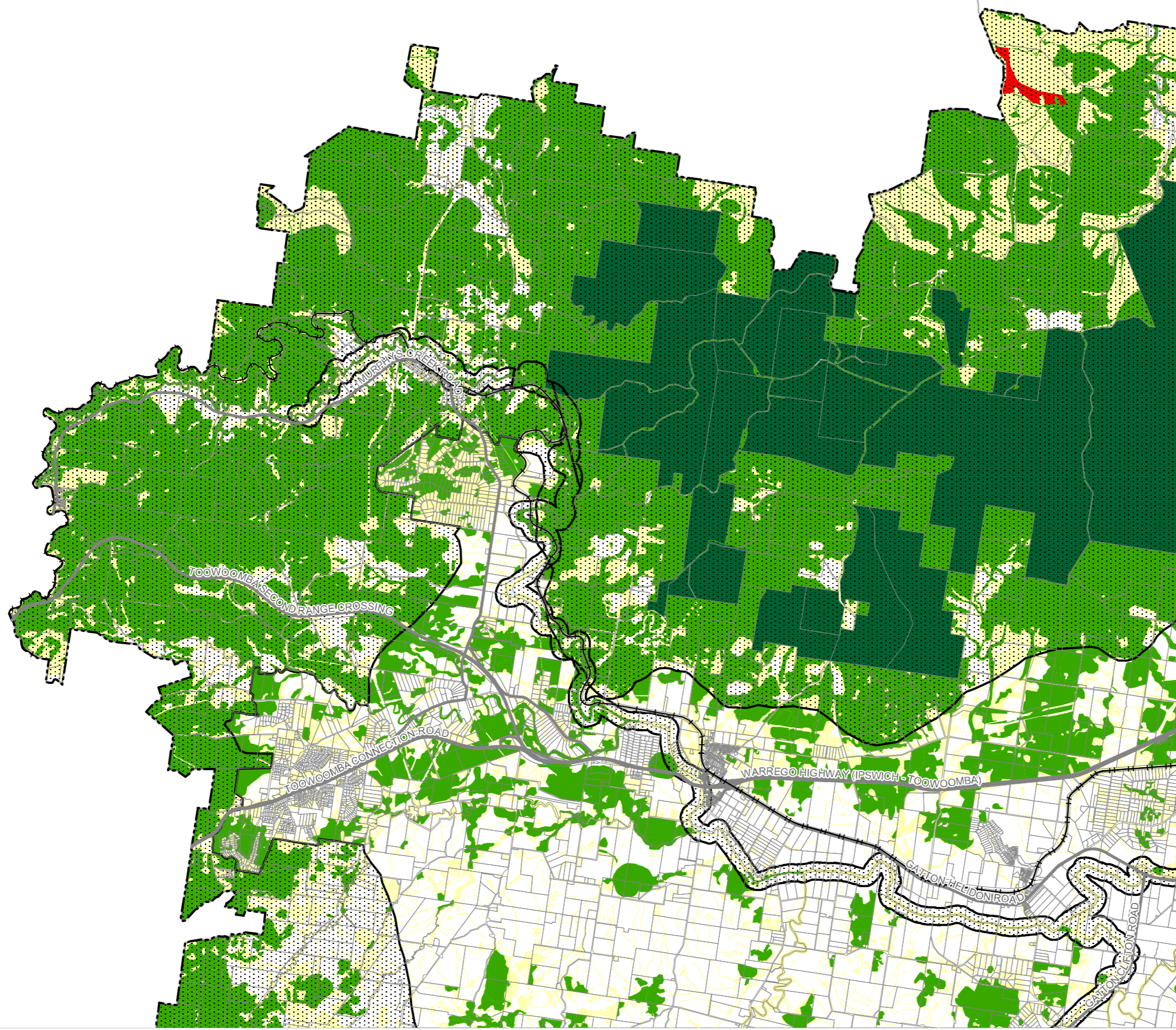
- Protected Area
- Regulated Vegetation
- Legally Secured Offset

#### Matters of Local Environmental Significance (MLES)

- Biodiversity Area
- Ecological Corridor

#### Other Features

- Major Road
- Railway Network
- Property Boundary
- Local Government Boundary
- Watercourse or Waterbody



#### NOTE

Refer to online or electronic mapping where layers overlap or labels obstruct the data on the map.

#### MAP INFORMATION

Based on or contains data sourced from the State Government which gives no warranty in relation to the data (including accuracy, reliability, completeness or suitability) and accepts no liability (including without limitation, liability in negligence) for any loss, damage or costs (including consequential damage) relating to any use of the data.

© Copyright Lockyer Valley Regional Council 2024

#### DATA SOURCES

Cadastral data weekly - whole of State Queensland, Rail network - Queensland, Queensland roads and tracks, State controlled roads surveyed centreline - Queensland © State of Queensland (Department of Resources) 2021, 2022. MSES - Protected area - estates, MSES - Protected area - nature refuges, MSES - Legally secured offset area - offset register, MSES - Regulated vegetation - intersecting a watercourse, MSES - Regulated vegetation - 100m from wetland, MSES - Regulated vegetation - essential habitat, MSES - Regulated vegetation - category B endangered or of concern, MSES - Regulated vegetation - category C endangered or of concern: © State of Queensland (Department of Environment and Science) 2023

Geocentric Datum of Australia (GDA2020 / MGA zone 56)

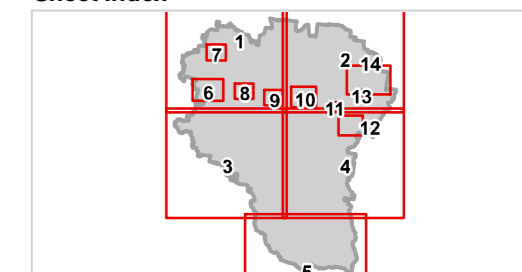


Commencement Date: 22 July 2024

Approx Scale @ A3: 1:100,000



#### Sheet Index







REGIONAL COUNCIL

SOMERSET REGIONAL

### OM3A Biodiversity - Ecological Areas overlay map

#### Matters of State Environmental Significance (MSES)

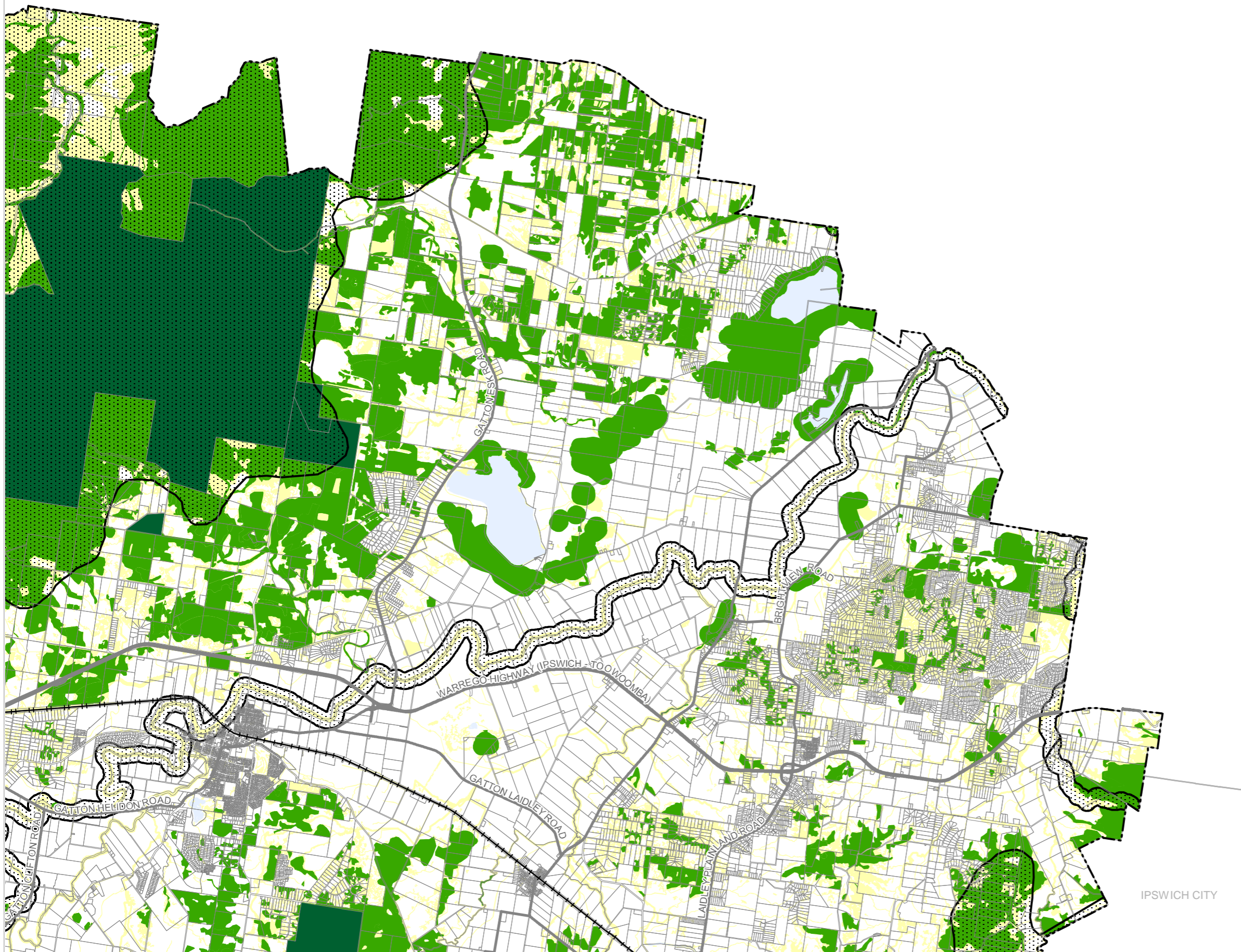
- Protected Area
- Regulated Vegetation
- Legally Secured Offset

#### Matters of Local Environmental Significance (MLES)

- Biodiversity Area
- Ecological Corridor

#### Other Features

- Major Road
- Railway Network
- Property Boundary
- Local Government Boundary
- Watercourse or Waterbody



#### NOTE

Refer to online or electronic mapping where layers overlap or labels obstruct the data on the map.

#### MAP INFORMATION

Based on or contains data sourced from the State Government which gives no warranty in relation to the data (including accuracy, reliability, completeness or suitability) and accepts no liability (including without limitation, liability in negligence) for any loss, damage or costs (including consequential damage) relating to any use of the data.

© Copyright Lockyer Valley Regional Council 2024

#### DATA SOURCES

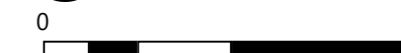
Cadastral data weekly - whole of State Queensland, Rail network - Queensland, Queensland roads and tracks, State controlled roads surveyed centreline - Queensland © State of Queensland (Department of Resources) 2021, 2022. MSES - Protected area - estates, MSES - Protected area - nature refuges, MSES - Legally secured offset area - offset register, MSES - Regulated vegetation - intersecting a watercourse, MSES - Regulated vegetation - 100m from wetland, MSES - Regulated vegetation - essential habitat, MSES - Regulated vegetation - category B endangered or of concern, MSES - Regulated vegetation - category C endangered or of concern: © State of Queensland (Department of Environment and Science) 2023

Geocentric Datum of Australia (GDA2020 / MGA zone 56)

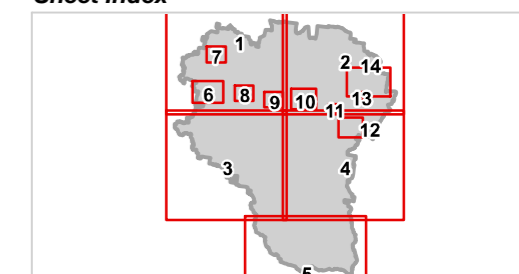


Commencement Date: 22 July 2024

Approx Scale @ A3: 1:100,000



#### Sheet Index



OM3A Biodiversity - Ecological Areas overlay LGA north-east-02





REGIONAL COUNCIL

### OM3A Biodiversity - Ecological Areas overlay map

#### Matters of State Environmental Significance (MSES)

- Protected Area
- Regulated Vegetation
- Legally Secured Offset

#### Matters of Local Environmental Significance (MLES)

- Biodiversity Area
- Ecological Corridor

#### Other Features

- Major Road
- Railway Network
- Property Boundary
- Local Government Boundary
- Watercourse or Waterbody

#### NOTE

Refer to online or electronic mapping where layers overlap or labels obstruct the data on the map.

#### MAP INFORMATION

Based on or contains data sourced from the State Government which gives no warranty in relation to the data (including accuracy, reliability, completeness or suitability) and accepts no liability (including without limitation, liability in negligence) for any loss, damage or costs (including consequential damage) relating to any use of the data.

© Copyright Lockyer Valley Regional Council 2024

#### DATA SOURCES

Cadastral data weekly - whole of State Queensland, Rail network - Queensland, Queensland roads and tracks, State controlled roads surveyed centreline - Queensland © State of Queensland (Department of Resources) 2021, 2022. MSES - Protected area - estates, MSES - Protected area - nature refuges, MSES - Legally secured offset area - offset register, MSES - Regulated vegetation - intersecting a watercourse, MSES - Regulated vegetation - 100m from wetland, MSES - Regulated vegetation - essential habitat, MSES - Regulated vegetation - category B endangered or of concern, MSES - Regulated vegetation - category C endangered or of concern: © State of Queensland (Department of Environment and Science) 2023

Geocentric Datum of Australia (GDA2020 / MGA zone 56)

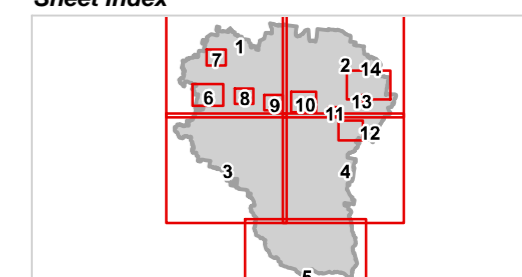


Commencement Date: 22 July 2024

Approx Scale @ A3: 1:100,000

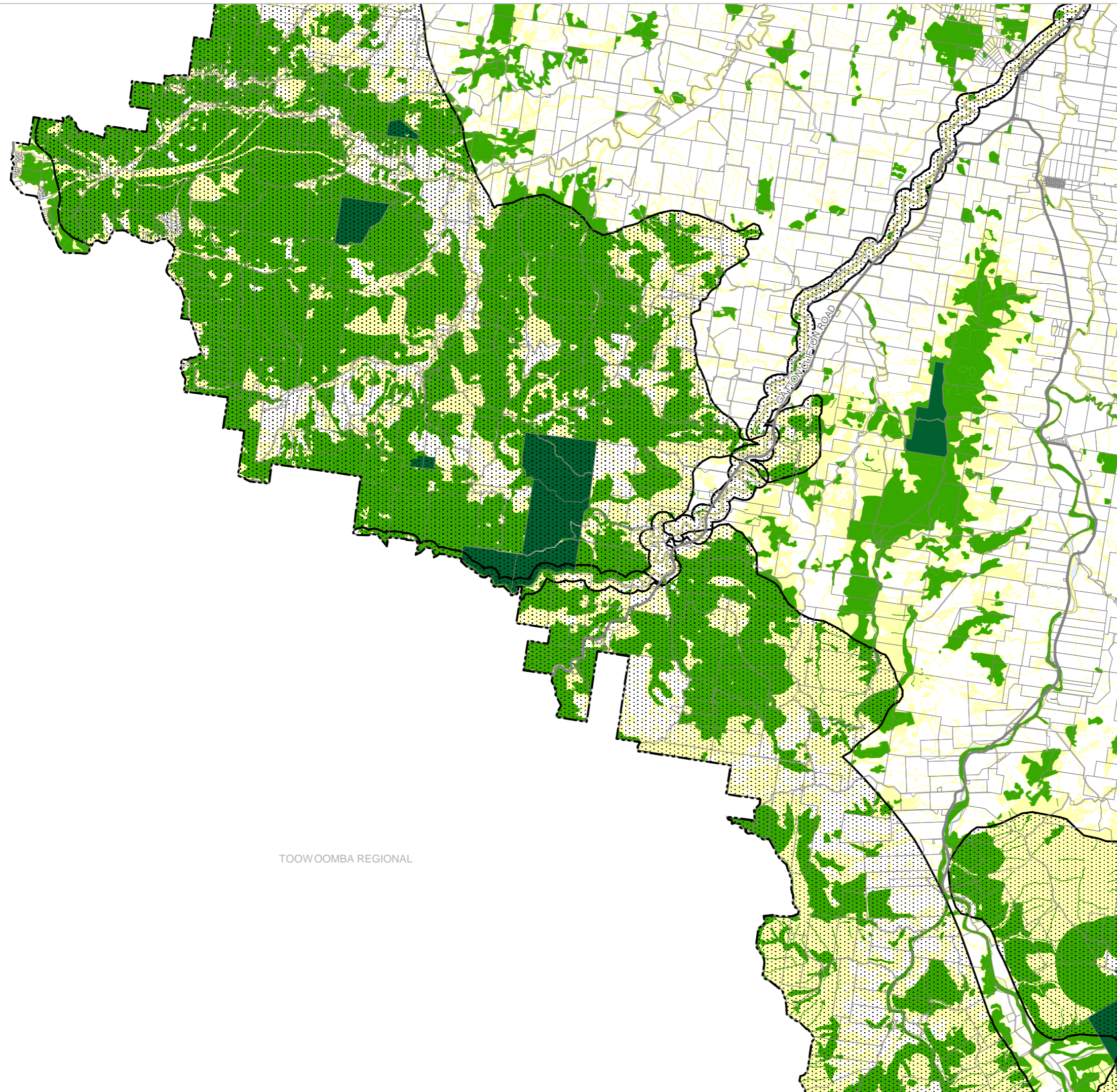


#### Sheet Index



OM3A Biodiversity - Ecological Areas overlay LGA south-west-03

TOOWOOMBA REGIONAL







REGIONAL COUNCIL

### OM3A Biodiversity - Ecological Areas overlay map

#### Matters of State Environmental Significance (MSES)

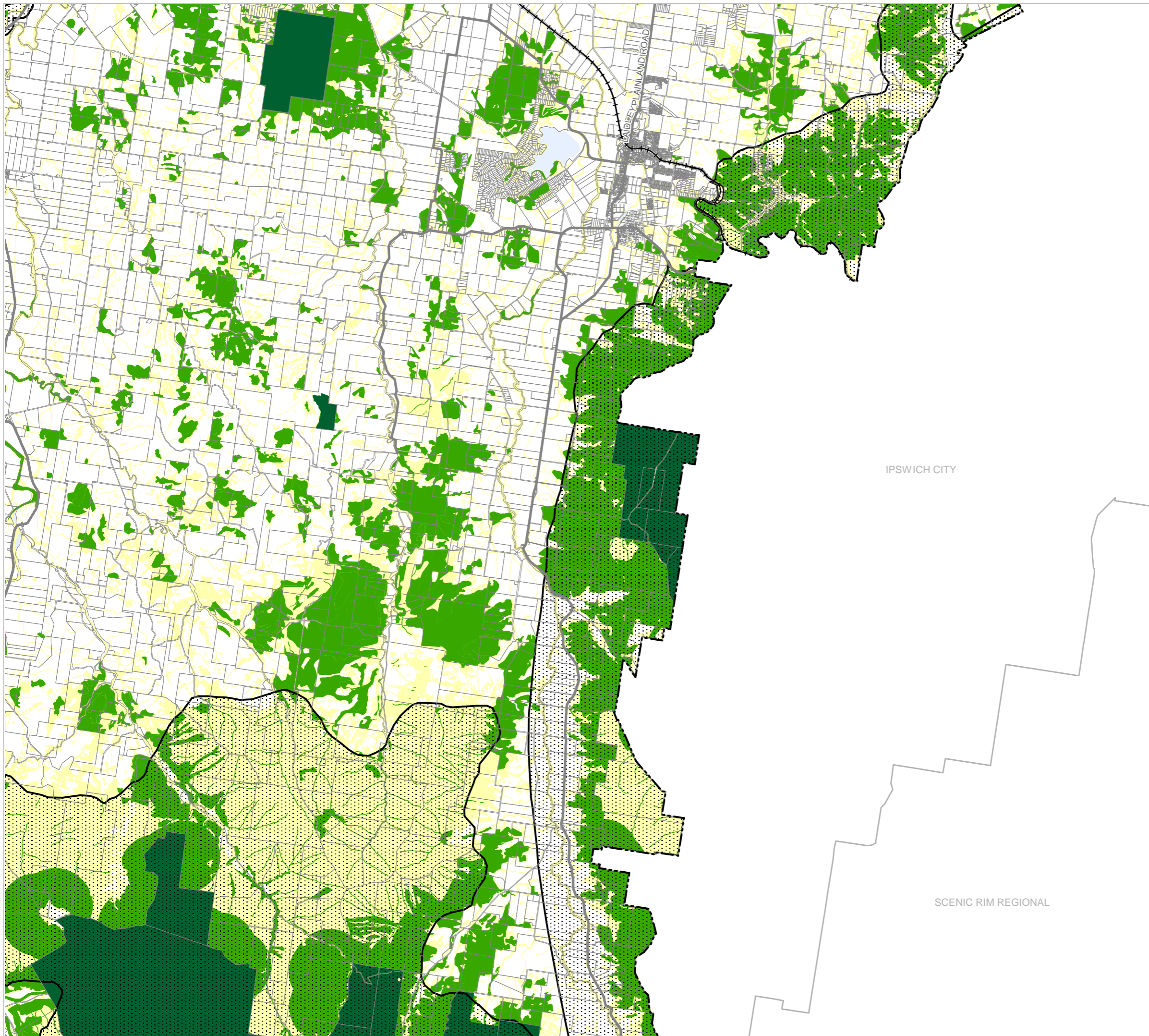
- Protected Area
- Regulated Vegetation
- Legally Secured Offset

#### Matters of Local Environmental Significance (MLES)

- Biodiversity Area
- Ecological Corridor

#### Other Features

- Major Road
- Railway Network
- Property Boundary
- Local Government Boundary
- Watercourse or Waterbody



#### NOTE

Refer to online or electronic mapping where layers overlap or labels obstruct the data on the map.

#### MAP INFORMATION

Based on or contains data sourced from the State Government which gives no warranty in relation to the data (including accuracy, reliability, completeness or suitability) and accepts no liability (including without limitation, liability in negligence) for any loss, damage or costs (including consequential damage) relating to any use of the data.

© Copyright Lockyer Valley Regional Council 2024

#### DATA SOURCES

Cadastral data weekly - whole of State Queensland, Rail network - Queensland, Queensland roads and tracks, State controlled roads surveyed centreline - Queensland © State of Queensland (Department of Resources) 2021, 2022. MSES - Protected area - estates, MSES - Protected area - nature refuges, MSES - Legally secured offset area - offset register, MSES - Regulated vegetation - intersecting a watercourse, MSES - Regulated vegetation - 100m from wetland, MSES - Regulated vegetation - essential habitat, MSES - Regulated vegetation - category B endangered or of concern, MSES - Regulated vegetation - category C endangered or of concern: © State of Queensland (Department of Environment and Science) 2023

Geocentric Datum of Australia (GDA2020 / MGA zone 56)

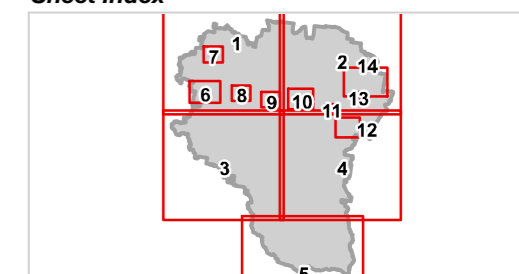


Commencement Date: 22 July 2024

Approx Scale @ A3: 1:100,000



#### Sheet Index







# Lockyer Valley Regional Council Planning Scheme

REGIONAL COUNCIL

## OM3A Biodiversity - Ecological Areas overlay map

### Matters of State Environmental Significance (MSES)

- Protected Area
- Regulated Vegetation
- Legally Secured Offset

### Matters of Local Environmental Significance (MLES)

- Biodiversity Area
- Ecological Corridor

### Other Features

- Major Road
- Railway Network
- Property Boundary
- Local Government Boundary
- Watercourse or Waterbody

### NOTE

Refer to online or electronic mapping where layers overlap or labels obstruct the data on the map.

### MAP INFORMATION

Based on or contains data sourced from the State Government which gives no warranty in relation to the data (including accuracy, reliability, completeness or suitability) and accepts no liability (including without limitation, liability in negligence) for any loss, damage or costs (including consequential damage) relating to any use of the data.

© Copyright Lockyer Valley Regional Council 2024

### DATA SOURCES

Cadastral data weekly - whole of State Queensland, Rail network - Queensland, Queensland roads and tracks, State controlled roads surveyed centreline - Queensland © State of Queensland (Department of Resources) 2021, 2022. MSES - Protected area - estates, MSES - Protected area - nature refuges, MSES - Legally secured offset area - offset register, MSES - Regulated vegetation - intersecting a watercourse, MSES - Regulated vegetation - 100m from wetland, MSES - Regulated vegetation - essential habitat, MSES - Regulated vegetation - category B endangered or of concern, MSES - Regulated vegetation - category C endangered or of concern: © State of Queensland (Department of Environment and Science) 2023

Geocentric Datum of Australia (GDA2020 / MGA zone 56)

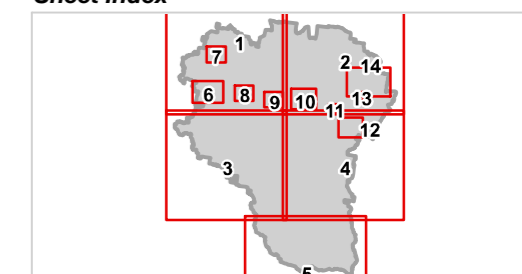


Commencement Date: 22 July 2024

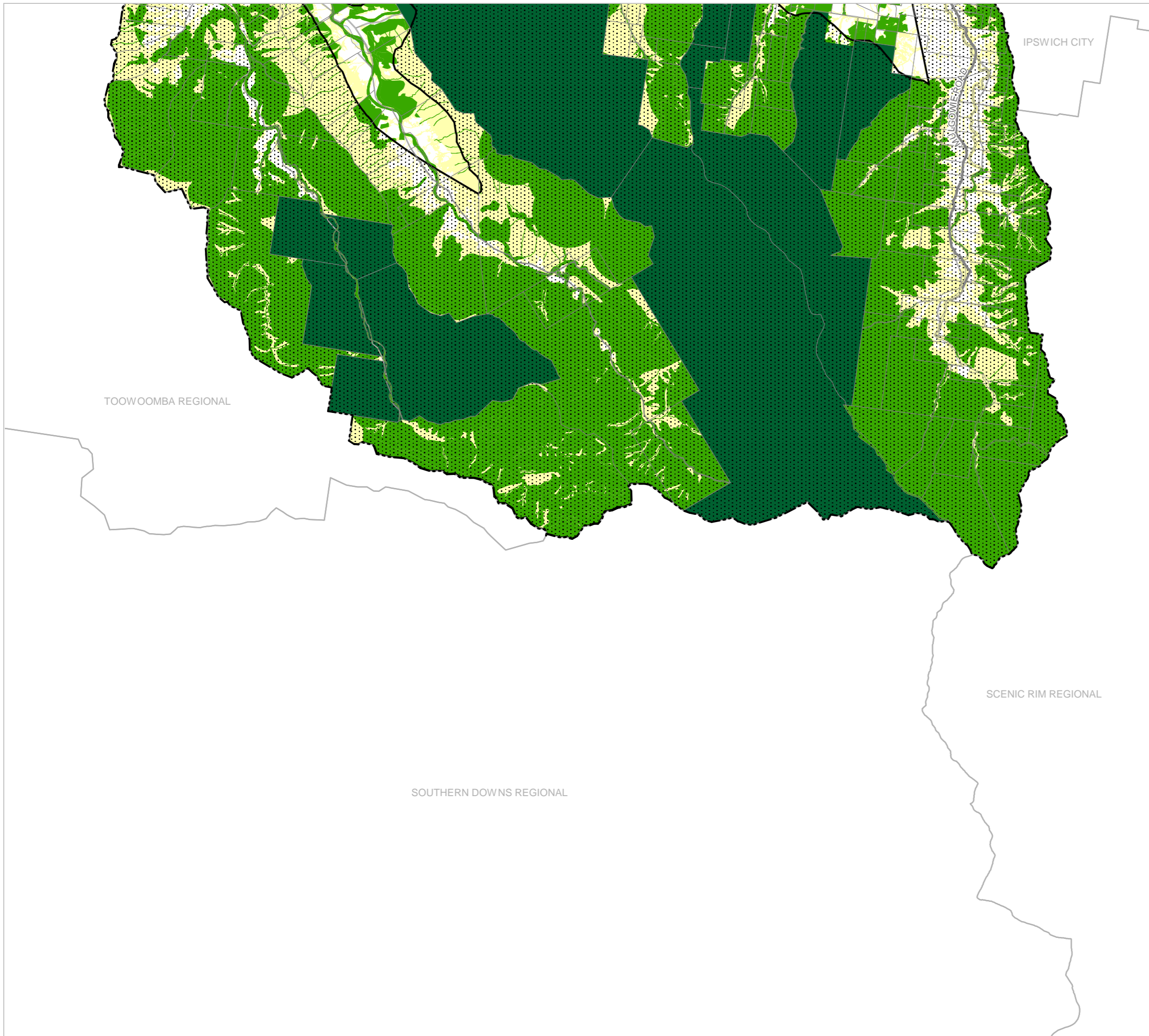
Approx Scale @ A3: 1:100,000



### Sheet Index



OM3A Biodiversity - Ecological Areas overlay LGA south-05



IPSWICH CITY

WULGOMIE ROAD

TOOWOOMBA REGIONAL

SCENIC RIM REGIONAL

SOUTHERN DOWNS REGIONAL








REGIONAL COUNCIL

### OM3A Biodiversity - Ecological Areas overlay map

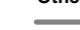
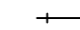

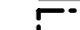

#### Matters of State Environmental Significance (MSES)

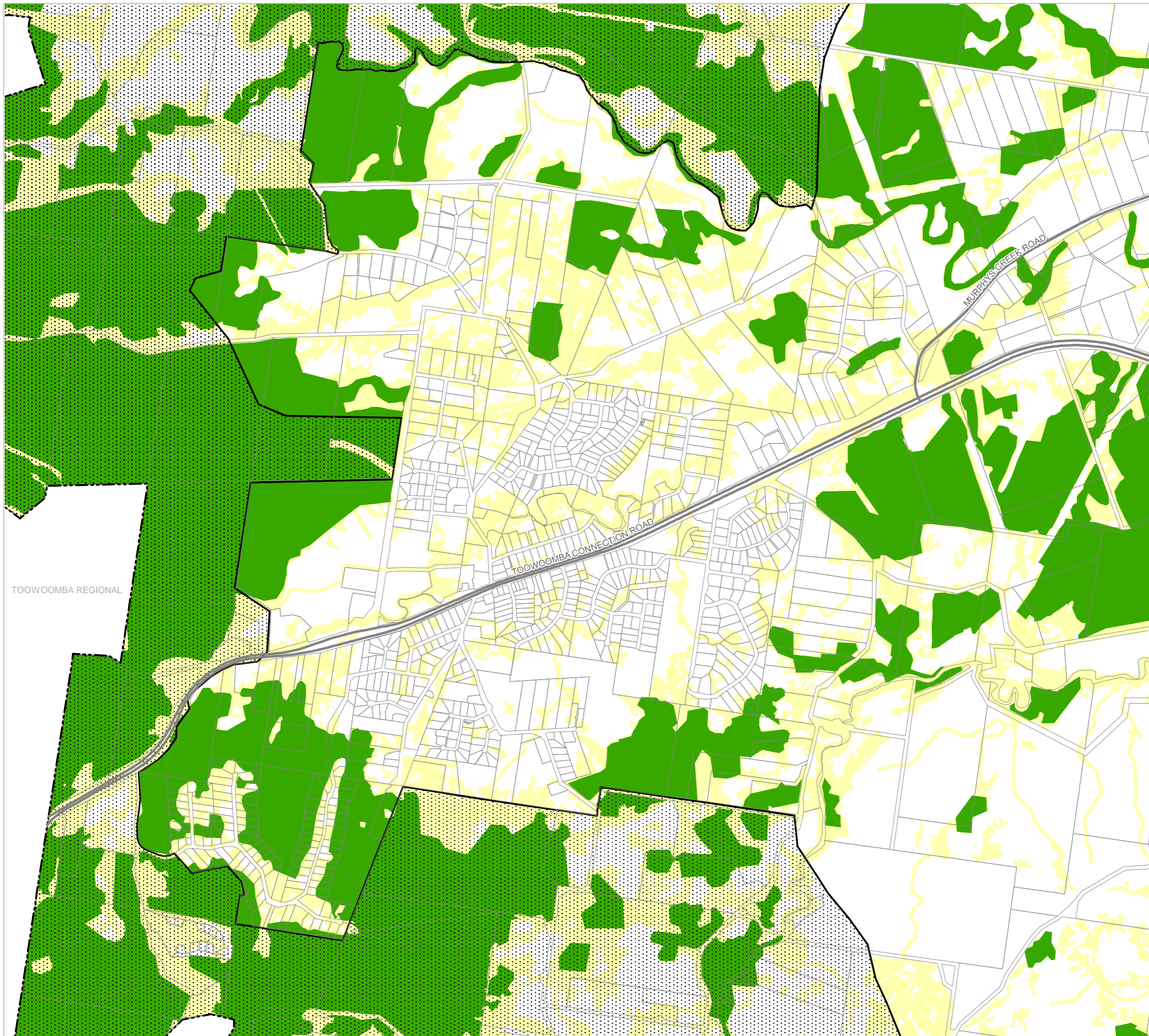
-  Protected Area
-  Regulated Vegetation
-  Legally Secured Offset

#### Matters of Local Environmental Significance (MLES)

-  Biodiversity Area
-  Ecological Corridor

#### Other Features

-  Major Road
-  Railway Network
-  Property Boundary
-  Local Government Boundary
-  Watercourse or Waterbody



#### NOTE

Refer to online or electronic mapping where layers overlap or labels obstruct the data on the map.

#### MAP INFORMATION

Based on or contains data sourced from the State Government which gives no warranty in relation to the data (including accuracy, reliability, completeness or suitability) and accepts no liability (including without limitation, liability in negligence) for any loss, damage or costs (including consequential damage) relating to any use of the data.

© Copyright Lockyer Valley Regional Council 2024

#### DATA SOURCES

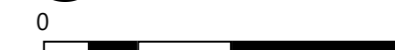
Cadastral data weekly - whole of State Queensland, Rail network - Queensland, Queensland roads and tracks, State controlled roads surveyed centreline - Queensland © State of Queensland (Department of Resources) 2021, 2022. MSES - Protected area - estates, MSES - Protected area - nature refuges, MSES - Legally secured offset area - offset register, MSES - Regulated vegetation - intersecting a watercourse, MSES - Regulated vegetation - 100m from wetland, MSES - Regulated vegetation - essential habitat, MSES - Regulated vegetation - category B endangered or of concern, MSES - Regulated vegetation - category C endangered or of concern: © State of Queensland (Department of Environment and Science) 2023

Geocentric Datum of Australia (GDA2020 / MGA zone 56)



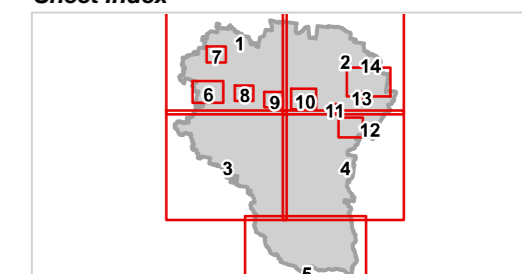
Commencement Date: 22 July 2024

Approx Scale @ A3: 1:20,000



kilometres

#### Sheet Index







REGIONAL COUNCIL

### OM3A Biodiversity - Ecological Areas overlay map

#### Matters of State Environmental Significance (MSES)

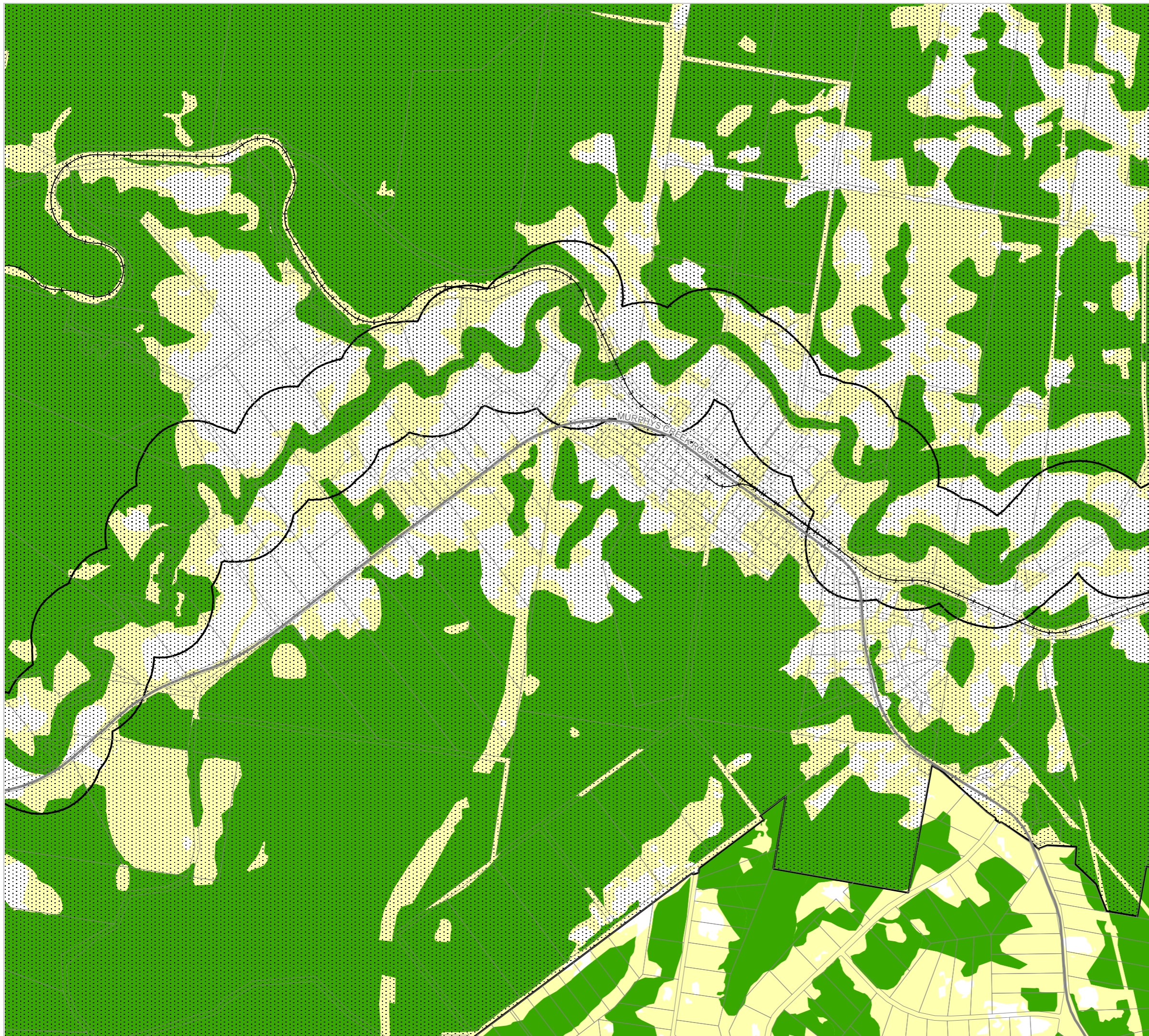
- Protected Area
- Regulated Vegetation
- Legally Secured Offset

#### Matters of Local Environmental Significance (MLES)

- Biodiversity Area
- Ecological Corridor

#### Other Features

- Major Road
- Railway Network
- Property Boundary
- Local Government Boundary
- Watercourse or Waterbody



#### NOTE

Refer to online or electronic mapping where layers overlap or labels obstruct the data on the map.

#### MAP INFORMATION

Based on or contains data sourced from the State Government which gives no warranty in relation to the data (including accuracy, reliability, completeness or suitability) and accepts no liability (including without limitation, liability in negligence) for any loss, damage or costs (including consequential damage) relating to any use of the data.

© Copyright Lockyer Valley Regional Council 2024

#### DATA SOURCES

Cadastral data weekly - whole of State Queensland, Rail network - Queensland, Queensland roads and tracks, State controlled roads surveyed centreline - Queensland © State of Queensland (Department of Resources) 2021, 2022. MSES - Protected area - estates, MSES - Protected area - nature refuges, MSES - Legally secured offset area - offset register, MSES - Regulated vegetation - intersecting a watercourse, MSES - Regulated vegetation - 100m from wetland, MSES - Regulated vegetation - essential habitat, MSES - Regulated vegetation - category B endangered or of concern, MSES - Regulated vegetation - category C endangered or of concern: © State of Queensland (Department of Environment and Science) 2023

Geocentric Datum of Australia (GDA2020 / MGA zone 56)



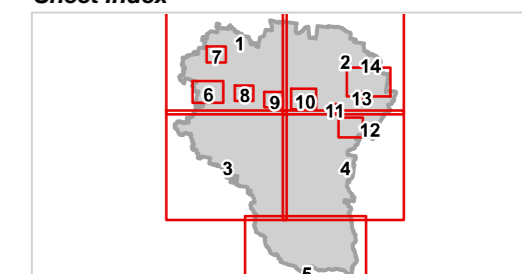
Commencement Date: 22 July 2024

Approx Scale @ A3: 1:15,000



kilometres

#### Sheet Index







REGIONAL COUNCIL

OM3A Biodiversity - Ecological Areas overlay map

Matters of State Environmental Significance (MSES)

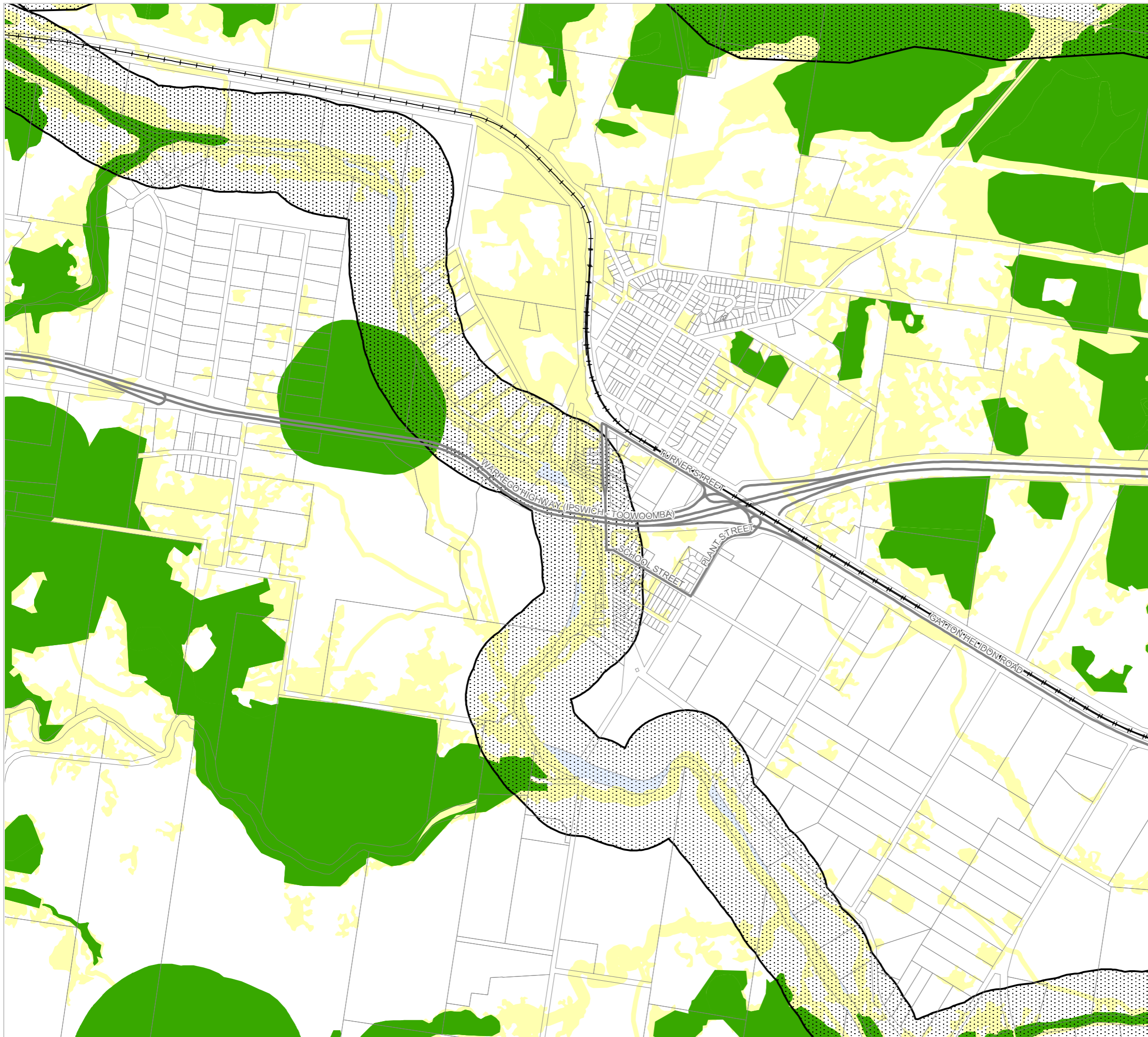
- Protected Area
- Regulated Vegetation
- Legally Secured Offset

Matters of Local Environmental Significance (MLES)

- Biodiversity Area
- Ecological Corridor

Other Features

- Major Road
- Railway Network
- Property Boundary
- Local Government Boundary
- Watercourse or Waterbody



NOTE

Refer to online or electronic mapping where layers overlap or labels obstruct the data on the map.

MAP INFORMATION

Based on or contains data sourced from the State Government which gives no warranty in relation to the data (including accuracy, reliability, completeness or suitability) and accepts no liability (including without limitation, liability in negligence) for any loss, damage or costs (including consequential damage) relating to any use of the data.

© Copyright Lockyer Valley Regional Council 2024

DATA SOURCES

Cadastral data weekly - whole of State Queensland, Rail network - Queensland, Queensland roads and tracks, State controlled roads surveyed centreline - Queensland © State of Queensland (Department of Resources) 2021, 2022. MSES - Protected area - estates, MSES - Protected area - nature refuges, MSES - Legally secured offset area - offset register, MSES - Regulated vegetation - intersecting a watercourse, MSES - Regulated vegetation - 100m from wetland, MSES - Regulated vegetation - essential habitat, MSES - Regulated vegetation - category B endangered or of concern, MSES - Regulated vegetation - category C endangered or of concern: © State of Queensland (Department of Environment and Science) 2023

Geocentric Datum of Australia (GDA2020 / MGA zone 56)



Commencement Date: 22 July 2024

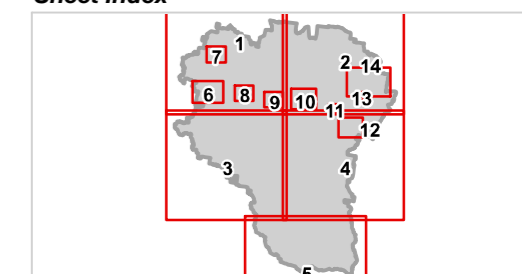
Approx Scale @ A3: 1:15,000

0 0.5



kilometres

Sheet Index







REGIONAL COUNCIL

OM3A Biodiversity - Ecological Areas overlay map

Matters of State Environmental Significance (MSES)

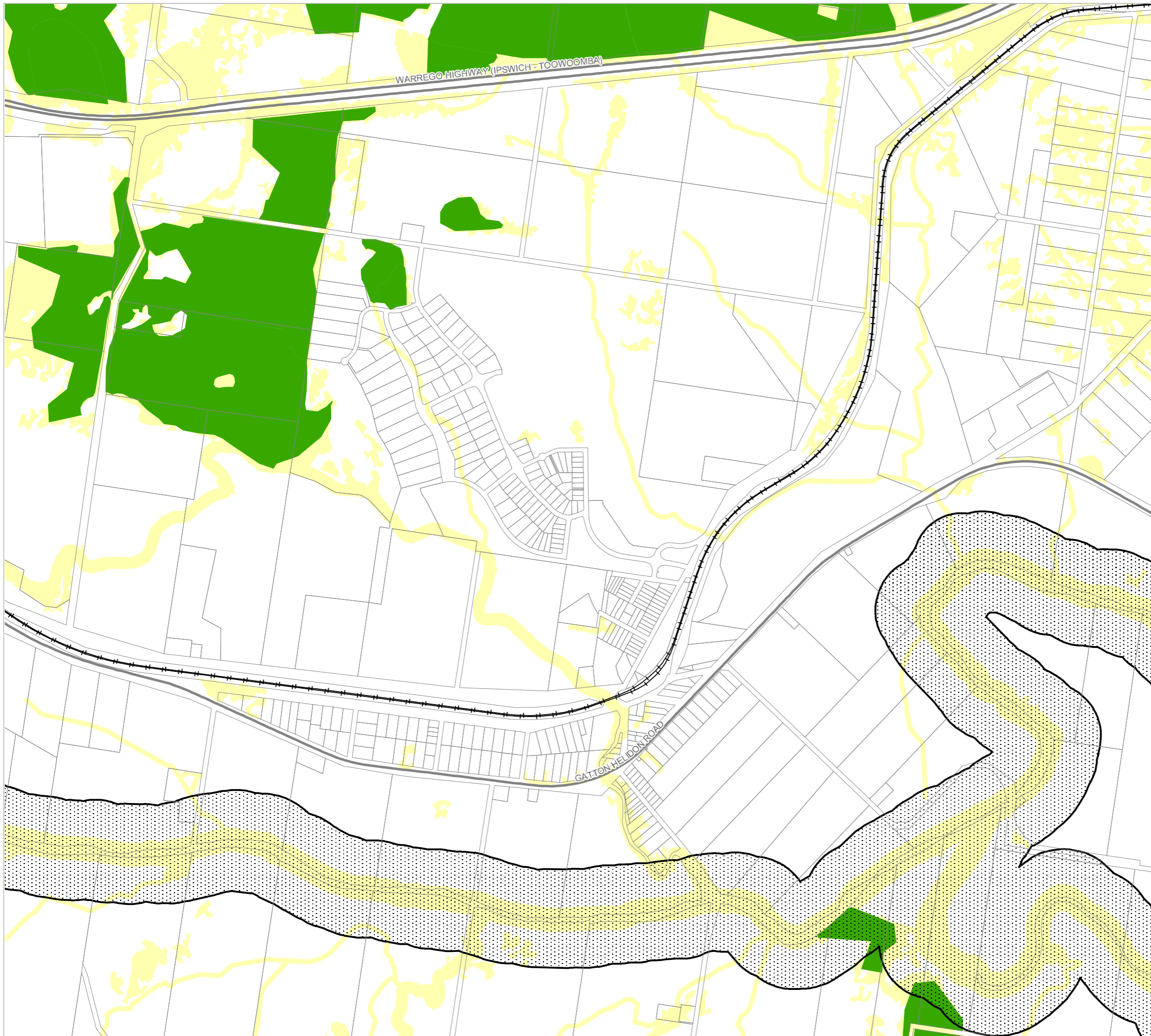
- Protected Area
- Regulated Vegetation
- Legally Secured Offset

Matters of Local Environmental Significance (MLES)

- Biodiversity Area
- Ecological Corridor

Other Features

- Major Road
- Railway Network
- Property Boundary
- Local Government Boundary
- Watercourse or Waterbody



NOTE

Refer to online or electronic mapping where layers overlap or labels obstruct the data on the map.

MAP INFORMATION

Based on or contains data sourced from the State Government which gives no warranty in relation to the data (including accuracy, reliability, completeness or suitability) and accepts no liability (including without limitation, liability in negligence) for any loss, damage or costs (including consequential damage) relating to any use of the data.

© Copyright Lockyer Valley Regional Council 2024

DATA SOURCES

Cadastral data weekly - whole of State Queensland, Rail network - Queensland, Queensland roads and tracks, State controlled roads surveyed centreline - Queensland © State of Queensland (Department of Resources) 2021, 2022. MSES - Protected area - estates, MSES - Protected area - nature refuges, MSES - Legally secured offset area - offset register, MSES - Regulated vegetation - intersecting a watercourse, MSES - Regulated vegetation - 100m from wetland, MSES - Regulated vegetation - essential habitat, MSES - Regulated vegetation - category B endangered or of concern, MSES - Regulated vegetation - category C endangered or of concern: © State of Queensland (Department of Environment and Science) 2023

Geocentric Datum of Australia (GDA2020 / MGA zone 56)



Commencement Date: 22 July 2024

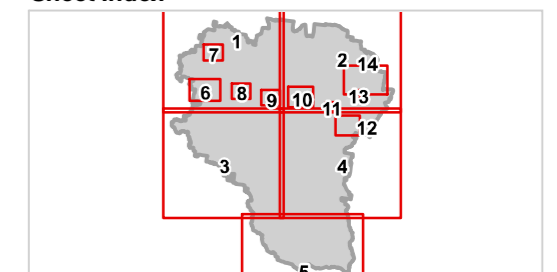
Approx Scale @ A3: 1:15,000

0 0.5



kilometres

Sheet Index







REGIONAL COUNCIL

### OM3A Biodiversity - Ecological Areas overlay map

#### Matters of State Environmental Significance (MSES)

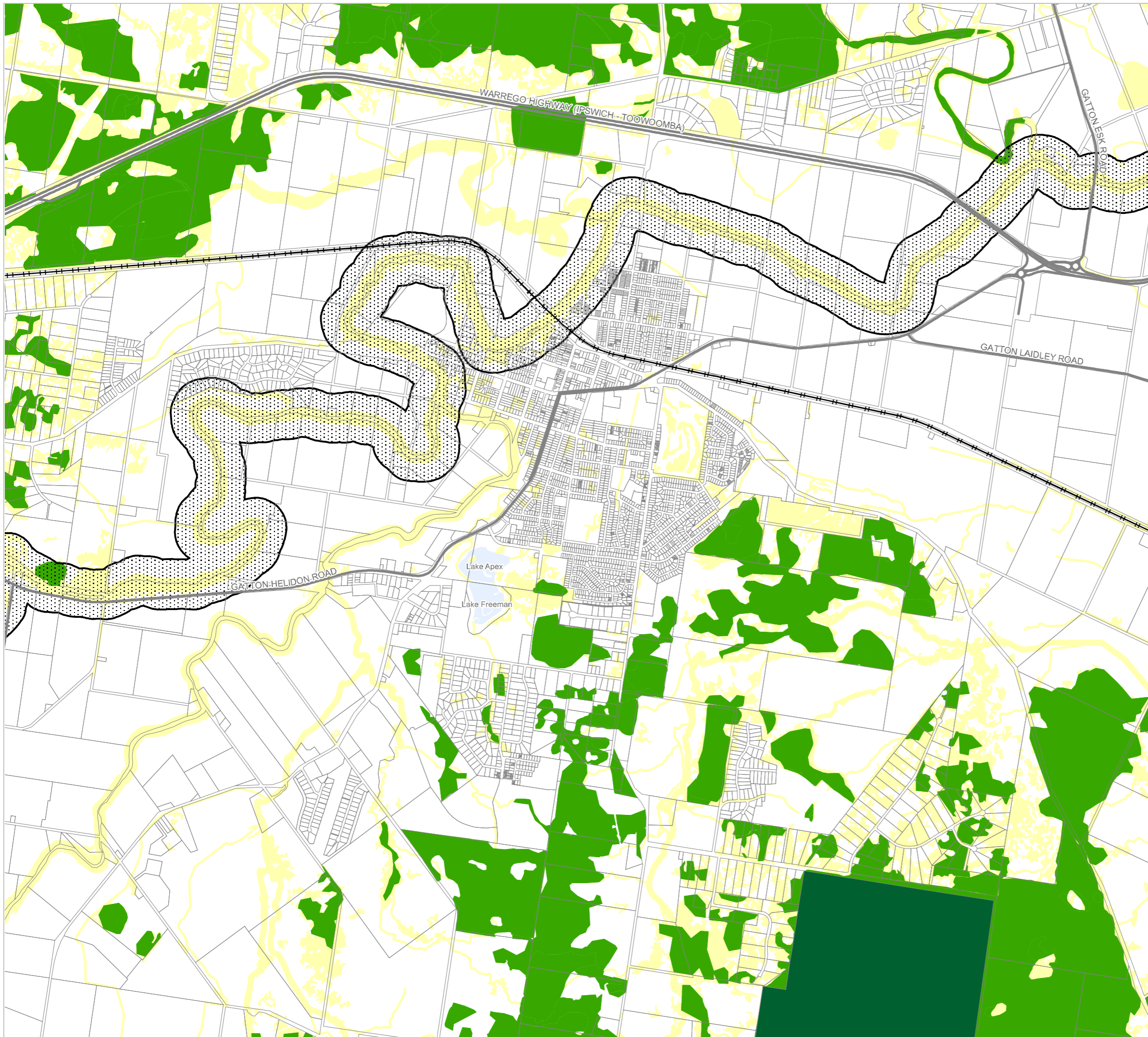
- Protected Area
- Regulated Vegetation
- Legally Secured Offset

#### Matters of Local Environmental Significance (MLES)

- Biodiversity Area
- Ecological Corridor

#### Other Features

- Major Road
- Railway Network
- Property Boundary
- Local Government Boundary
- Watercourse or Waterbody



#### NOTE

Refer to online or electronic mapping where layers overlap or labels obstruct the data on the map.

#### MAP INFORMATION

Based on or contains data sourced from the State Government which gives no warranty in relation to the data (including accuracy, reliability, completeness or suitability) and accepts no liability (including without limitation, liability in negligence) for any loss, damage or costs (including consequential damage) relating to any use of the data.

© Copyright Lockyer Valley Regional Council 2024

#### DATA SOURCES

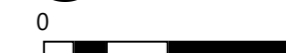
Cadastral data weekly - whole of State Queensland, Rail network - Queensland, Queensland roads and tracks, State controlled roads surveyed centreline - Queensland © State of Queensland (Department of Resources) 2021, 2022. MSES - Protected area - estates, MSES - Protected area - nature refuges, MSES - Legally secured offset area - offset register, MSES - Regulated vegetation - intersecting a watercourse, MSES - Regulated vegetation - 100m from wetland, MSES - Regulated vegetation - essential habitat, MSES - Regulated vegetation - category B endangered or of concern, MSES - Regulated vegetation - category C endangered or of concern: © State of Queensland (Department of Environment and Science) 2023

Geocentric Datum of Australia (GDA2020 / MGA zone 56)



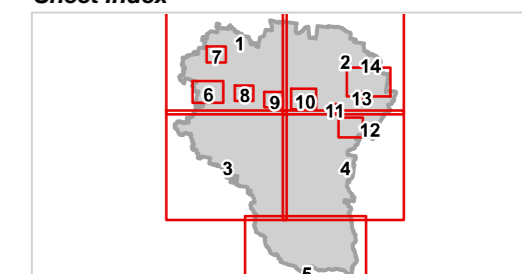
Commencement Date: 22 July 2024

Approx Scale @ A3: 1:30,000



kilometres

#### Sheet Index







REGIONAL COUNCIL

### OM3A Biodiversity - Ecological Areas overlay map

#### Matters of State Environmental Significance (MSES)

- Protected Area
- Regulated Vegetation
- Legally Secured Offset

#### Matters of Local Environmental Significance (MLES)

- Biodiversity Area
- Ecological Corridor

#### Other Features

- Major Road
- Railway Network
- Property Boundary
- Local Government Boundary
- Watercourse or Waterbody

#### NOTE

Refer to online or electronic mapping where layers overlap or labels obstruct the data on the map.

#### MAP INFORMATION

Based on or contains data sourced from the State Government which gives no warranty in relation to the data (including accuracy, reliability, completeness or suitability) and accepts no liability (including without limitation, liability in negligence) for any loss, damage or costs (including consequential damage) relating to any use of the data.

© Copyright Lockyer Valley Regional Council 2024

#### DATA SOURCES

Cadastral data weekly - whole of State Queensland, Rail network - Queensland, Queensland roads and tracks, State controlled roads surveyed centreline - Queensland © State of Queensland (Department of Resources) 2021, 2022. MSES - Protected area - estates, MSES - Protected area - nature refuges, MSES - Legally secured offset area - offset register, MSES - Regulated vegetation - intersecting a watercourse, MSES - Regulated vegetation - 100m from wetland, MSES - Regulated vegetation - essential habitat, MSES - Regulated vegetation - category B endangered or of concern, MSES - Regulated vegetation - category C endangered or of concern: © State of Queensland (Department of Environment and Science) 2023

Geocentric Datum of Australia (GDA2020 / MGA zone 56)



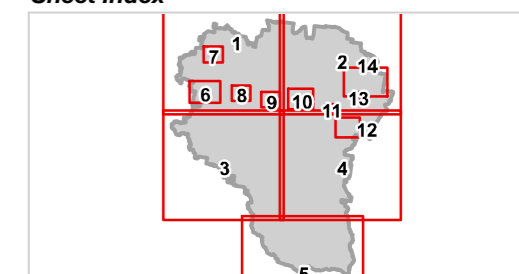
Commencement Date: 22 July 2024

Approx Scale @ A3: 1:7,500

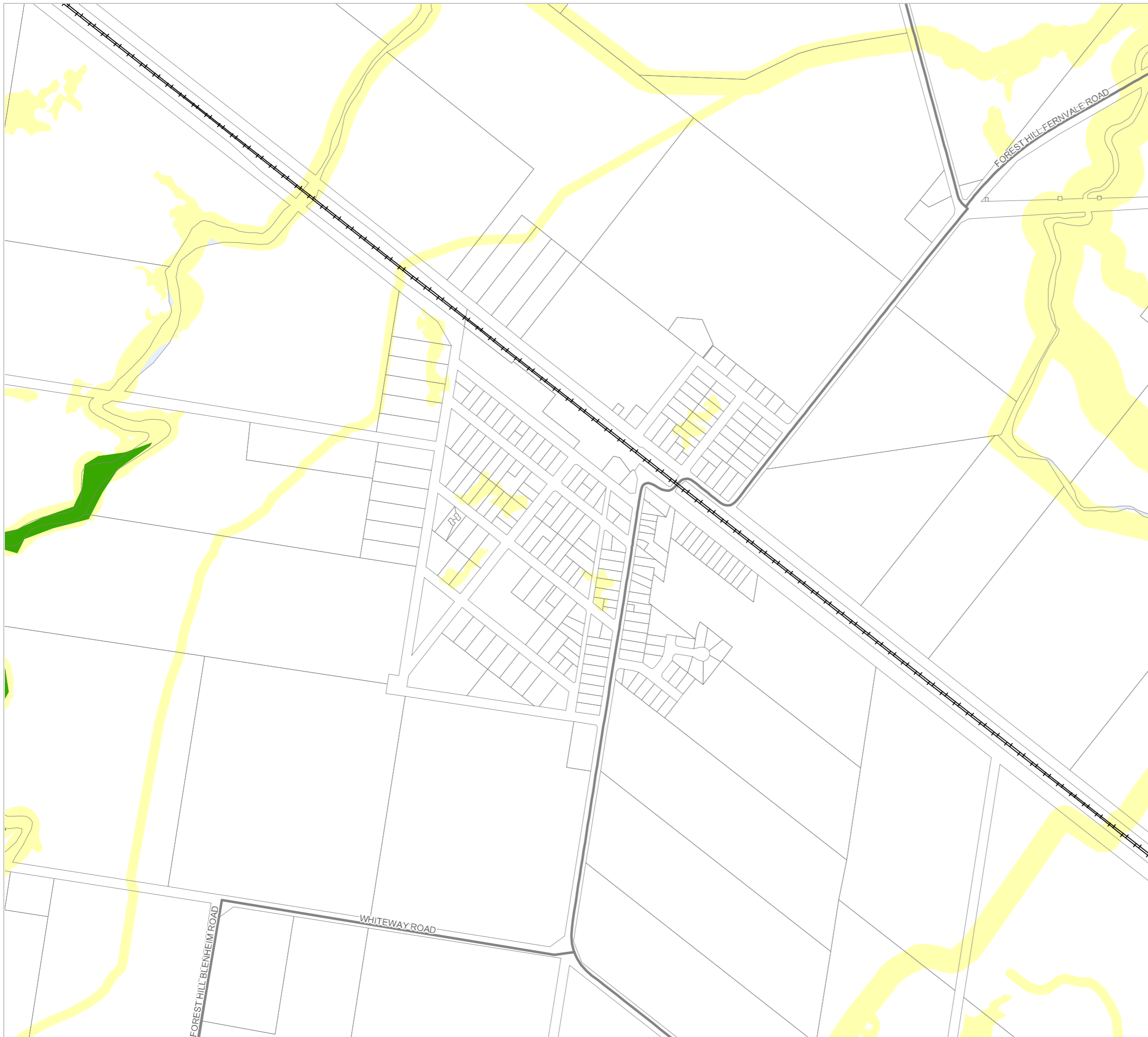
0 0.5

kilometres

#### Sheet Index



OM3A Biodiversity - Ecological Areas overlay  
Forest Hill-11







# Lockyer Valley Regional Council Planning Scheme

REGIONAL COUNCIL

## OM3A Biodiversity - Ecological Areas overlay map

### Matters of State Environmental Significance (MSES)

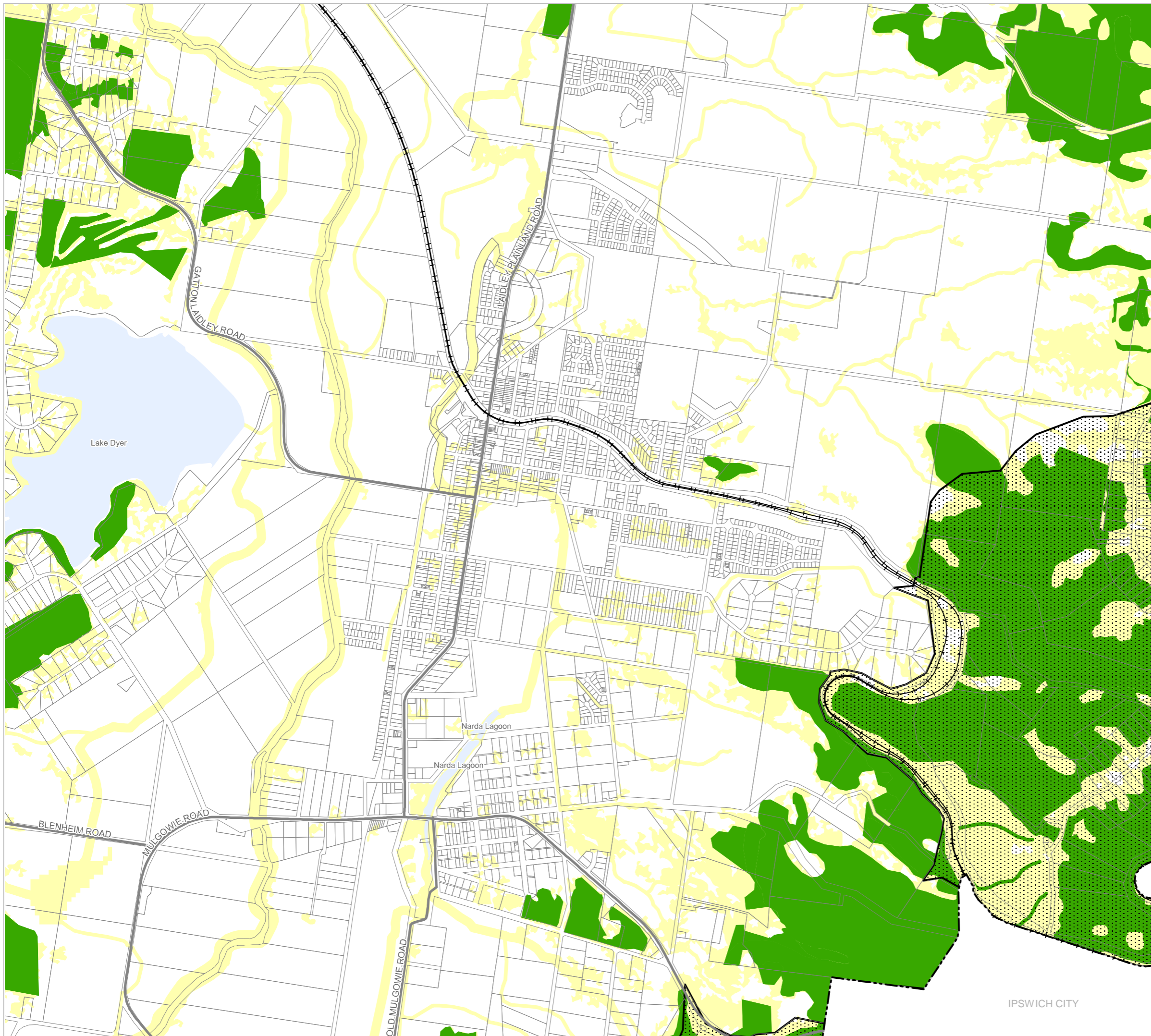
- Protected Area
- Regulated Vegetation
- Legally Secured Offset

### Matters of Local Environmental Significance (MLES)

- Biodiversity Area
- Ecological Corridor

### Other Features

- Major Road
- Railway Network
- Property Boundary
- Local Government Boundary
- Watercourse or Waterbody



### NOTE

Refer to online or electronic mapping where layers overlap or labels obstruct the data on the map.

### MAP INFORMATION

Based on or contains data sourced from the State Government which gives no warranty in relation to the data (including accuracy, reliability, completeness or suitability) and accepts no liability (including without limitation, liability in negligence) for any loss, damage or costs (including consequential damage) relating to any use of the data.

© Copyright Lockyer Valley Regional Council 2024

### DATA SOURCES

Cadastral data weekly - whole of State Queensland, Rail network - Queensland, Queensland roads and tracks, State controlled roads surveyed centreline - Queensland © State of Queensland (Department of Resources) 2021, 2022. MSES - Protected area - estates, MSES - Protected area - nature refuges, MSES - Legally secured offset area - offset register, MSES - Regulated vegetation - intersecting a watercourse, MSES - Regulated vegetation - 100m from wetland, MSES - Regulated vegetation - essential habitat, MSES - Regulated vegetation - category B endangered or of concern, MSES - Regulated vegetation - category C endangered or of concern: © State of Queensland (Department of Environment and Science) 2023

Geocentric Datum of Australia (GDA2020 / MGA zone 56)



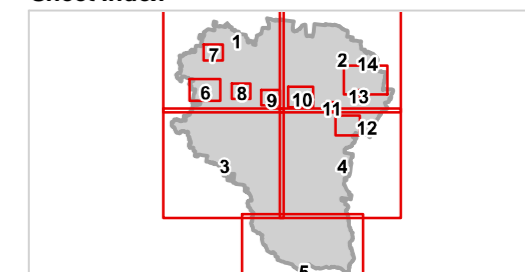
Commencement Date: 22 July 2024

Approx Scale @ A3: 1:20,000



kilometres

### Sheet Index



## OM3A Biodiversity - Ecological Areas overlay Laidley-12





REGIONAL COUNCIL

OM3A Biodiversity - Ecological Areas overlay map

Matters of State Environmental Significance (MSES)

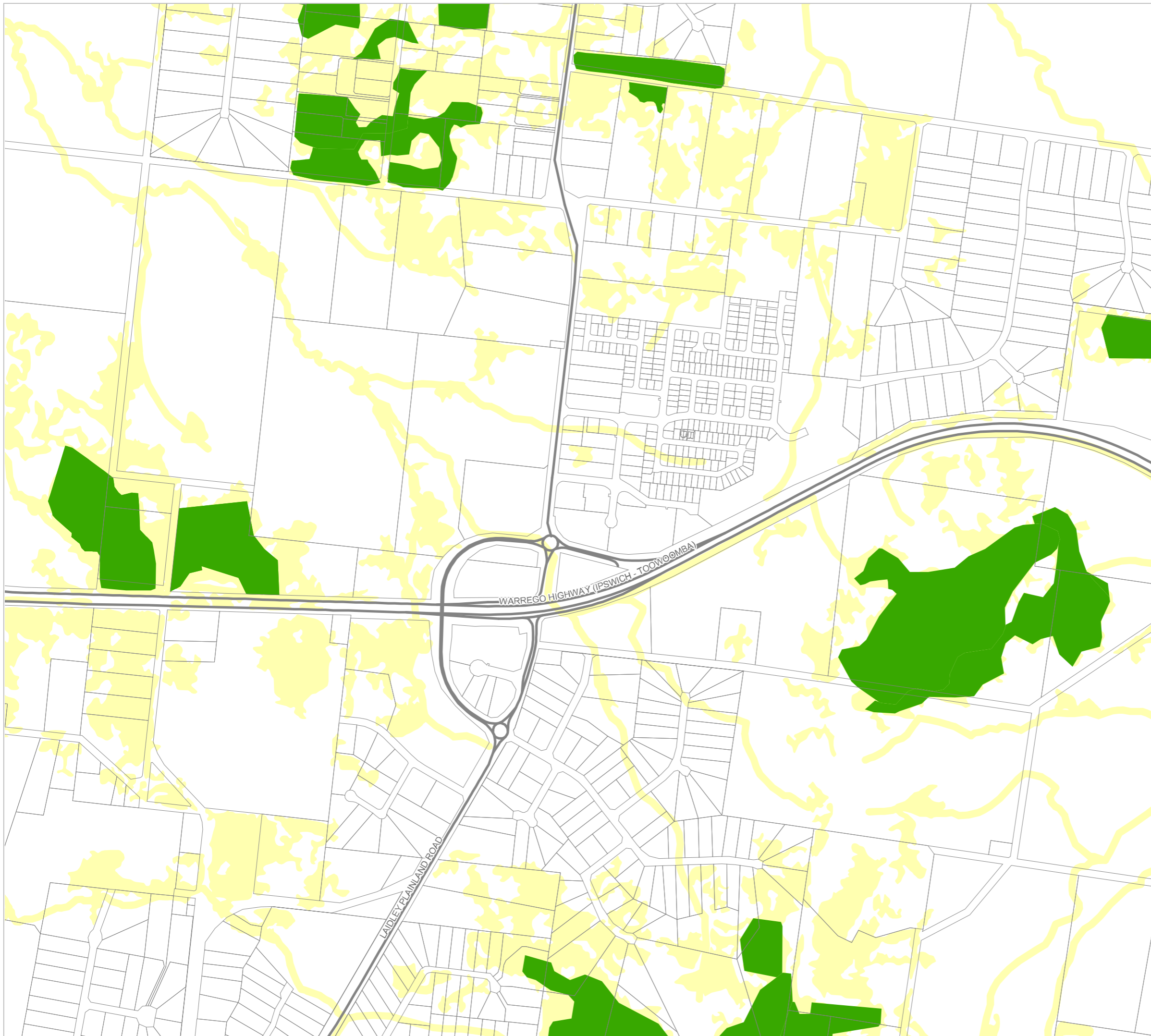
- Protected Area
- Regulated Vegetation
- Legally Secured Offset

Matters of Local Environmental Significance (MLES)

- Biodiversity Area
- Ecological Corridor

Other Features

- Major Road
- Railway Network
- Property Boundary
- Local Government Boundary
- Watercourse or Waterbody



NOTE

Refer to online or electronic mapping where layers overlap or labels obstruct the data on the map.

MAP INFORMATION

Based on or contains data sourced from the State Government which gives no warranty in relation to the data (including accuracy, reliability, completeness or suitability) and accepts no liability (including without limitation, liability in negligence) for any loss, damage or costs (including consequential damage) relating to any use of the data.

© Copyright Lockyer Valley Regional Council 2024

DATA SOURCES

Cadastral data weekly - whole of State Queensland, Rail network - Queensland, Queensland roads and tracks, State controlled roads surveyed centreline - Queensland © State of Queensland (Department of Resources) 2021, 2022. MSES - Protected area - estates, MSES - Protected area - nature refuges, MSES - Legally secured offset area - offset register, MSES - Regulated vegetation - intersecting a watercourse, MSES - Regulated vegetation - 100m from wetland, MSES - Regulated vegetation - essential habitat, MSES - Regulated vegetation - category B endangered or of concern, MSES - Regulated vegetation - category C endangered or of concern: © State of Queensland (Department of Environment and Science) 2023

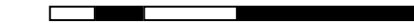
Geocentric Datum of Australia (GDA2020 / MGA zone 56)



Commencement Date: 22 July 2024

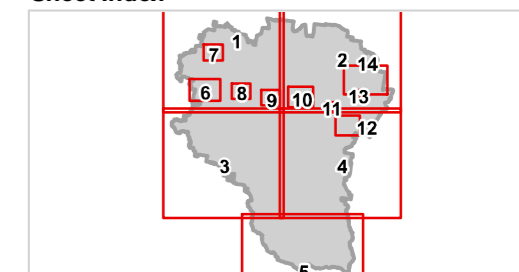
Approx Scale @ A3: 1:10,000

0 0.5



kilometres

Sheet Index







# Lockyer Valley Regional Council Planning Scheme

REGIONAL COUNCIL

## OM3A Biodiversity - Ecological Areas overlay map

SOMERSET REGIONAL

### Matters of State Environmental Significance (MSES)

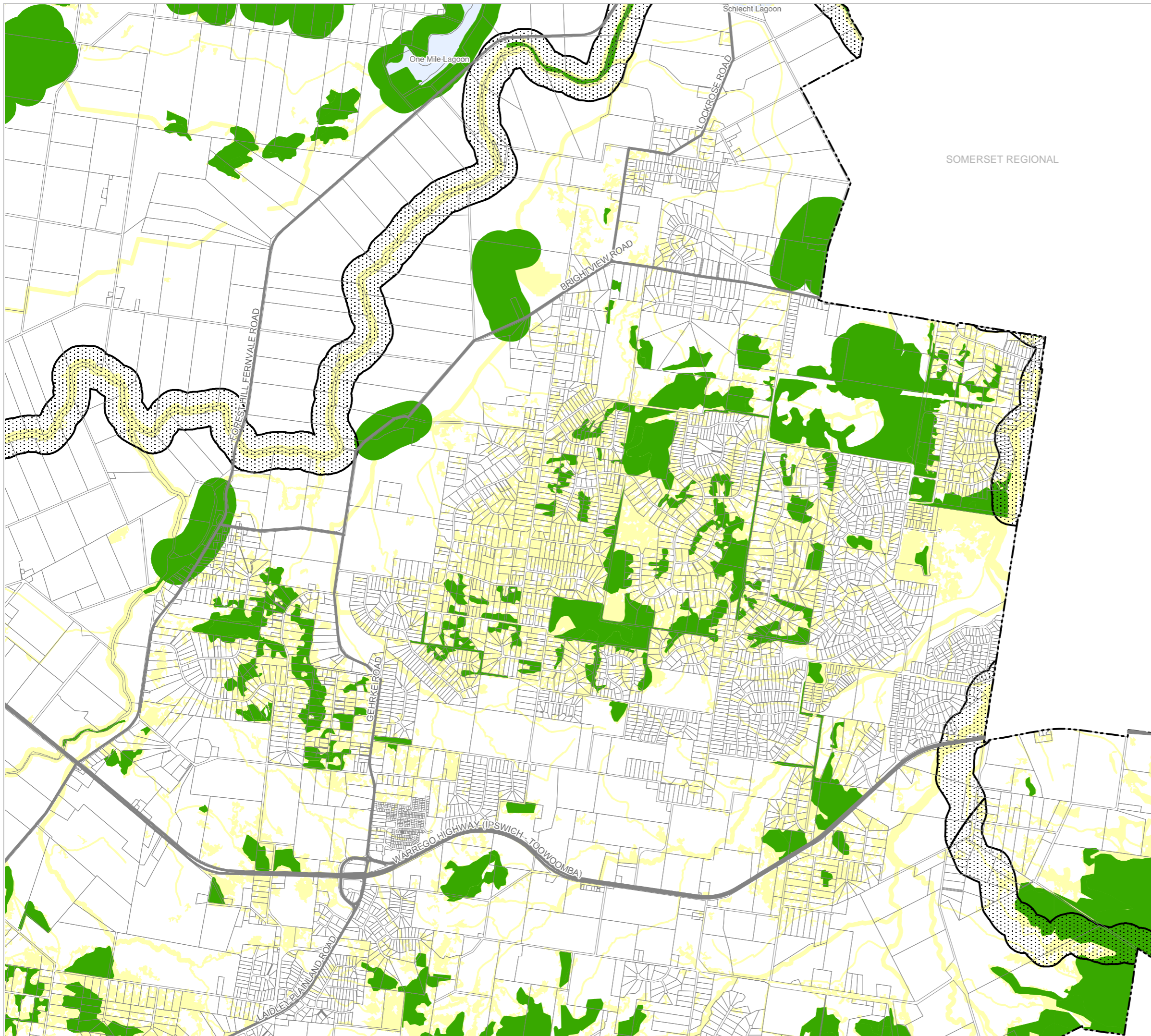
- Protected Area
- Regulated Vegetation
- Legally Secured Offset

### Matters of Local Environmental Significance (MLES)

- Biodiversity Area
- Ecological Corridor

### Other Features

- Major Road
- Railway Network
- Property Boundary
- Local Government Boundary
- Watercourse or Waterbody



### NOTE

Refer to online or electronic mapping where layers overlap or labels obstruct the data on the map.

### MAP INFORMATION

Based on or contains data sourced from the State Government which gives no warranty in relation to the data (including accuracy, reliability, completeness or suitability) and accepts no liability (including without limitation, liability in negligence) for any loss, damage or costs (including consequential damage) relating to any use of the data.

© Copyright Lockyer Valley Regional Council 2024

### DATA SOURCES

Cadastral data weekly - whole of State Queensland, Rail network - Queensland, Queensland roads and tracks, State controlled roads surveyed centreline - Queensland © State of Queensland (Department of Resources) 2021, 2022. MSES - Protected area - estates, MSES - Protected area - nature refuges, MSES - Legally secured offset area - offset register, MSES - Regulated vegetation - intersecting a watercourse, MSES - Regulated vegetation - 100m from wetland, MSES - Regulated vegetation - essential habitat, MSES - Regulated vegetation - category B endangered or of concern, MSES - Regulated vegetation - category C endangered or of concern: © State of Queensland (Department of Environment and Science) 2023

Geocentric Datum of Australia (GDA2020 / MGA zone 56)

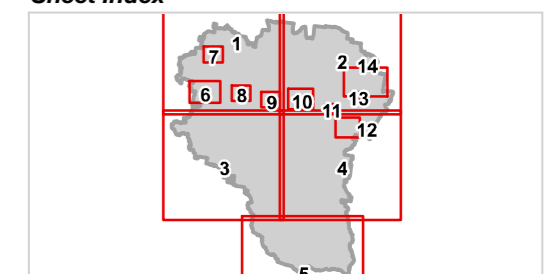


Commencement Date: 22 July 2024

Approx Scale @ A3: 1:40,000



### Sheet Index



OM3A Biodiversity - Ecological Areas overlay Regency Downs-14