



REGIONAL COUNCIL

OM3B Biodiversity - Wildlife Habitat overlay map

Matters of State Environmental Significance (MSES)

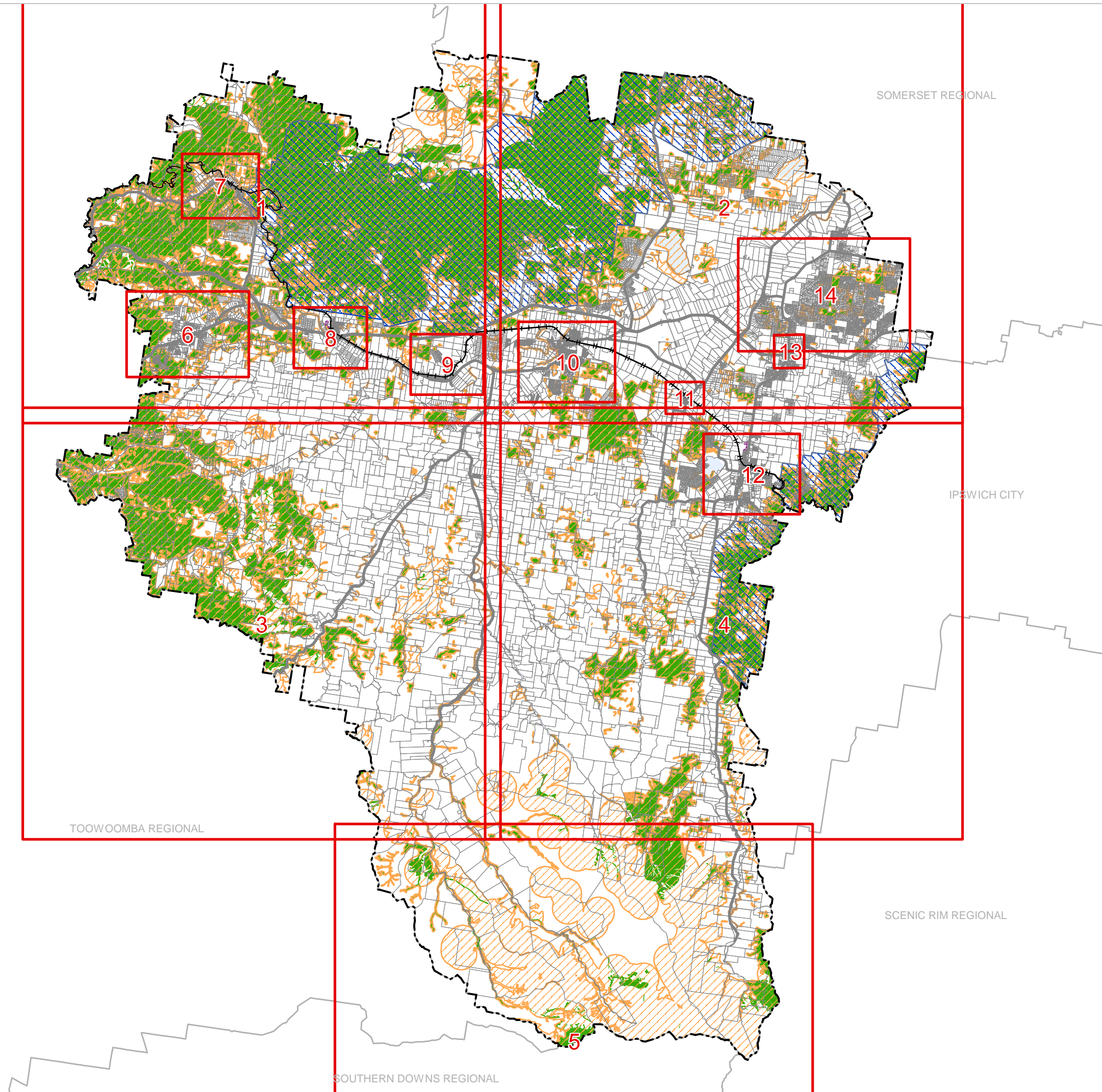
- Koala Priority Area
- Koala Habitat Area
- Wildlife Habitat

Matters of Local Environmental Significance (MLES)

- Flying fox roost
- Flying fox separation areas

Other Features

- Major Road
- Railway Network
- Property Boundary
- Local Government Boundary
- Watercourse or Waterbody



NOTE

Refer to online or electronic mapping where layers overlap or labels obstruct the data on the map.

MAP INFORMATION

Based on or contains data sourced from the State Government which gives no warranty in relation to the data (including accuracy, reliability, completeness or suitability) and accepts no liability (including without limitation, liability in negligence) for any loss, damage or costs (including consequential damage) relating to any use of the data.  
© Copyright Lockyer Valley Regional Council 2024

DATA SOURCES

Cadastral data weekly - whole of State Queensland, Rail network - Queensland, Queensland roads and tracks, State controlled roads surveyed centreline - Queensland: © State of Queensland (Department of Resources) 2023. Koala Priority Areas v1.0, Koala Habitat Areas v2.0, MSES - Regulated vegetation - essential habitat, MSES - wildlife habitat - endangered or vulnerable wildlife, MSES - wildlife habitat - special least concern animal: © State of Queensland (Department of Environment and Science) 2023

Geocentric Datum of Australia (GDA2020 / MGA zone 56)



Commencement Date: 22 July 2024

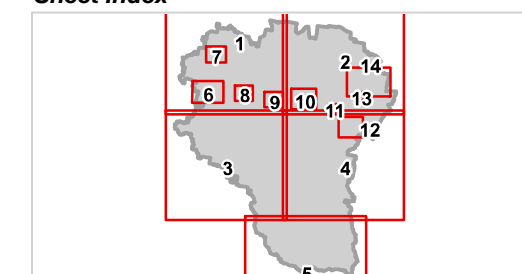
Approx Scale @ A3: 1:250,000

0 10



kilometres

Sheet Index







REGIONAL COUNCIL

### OM3B Biodiversity - Wildlife Habitat overlay map

#### Matters of State Environmental Significance (MSES)

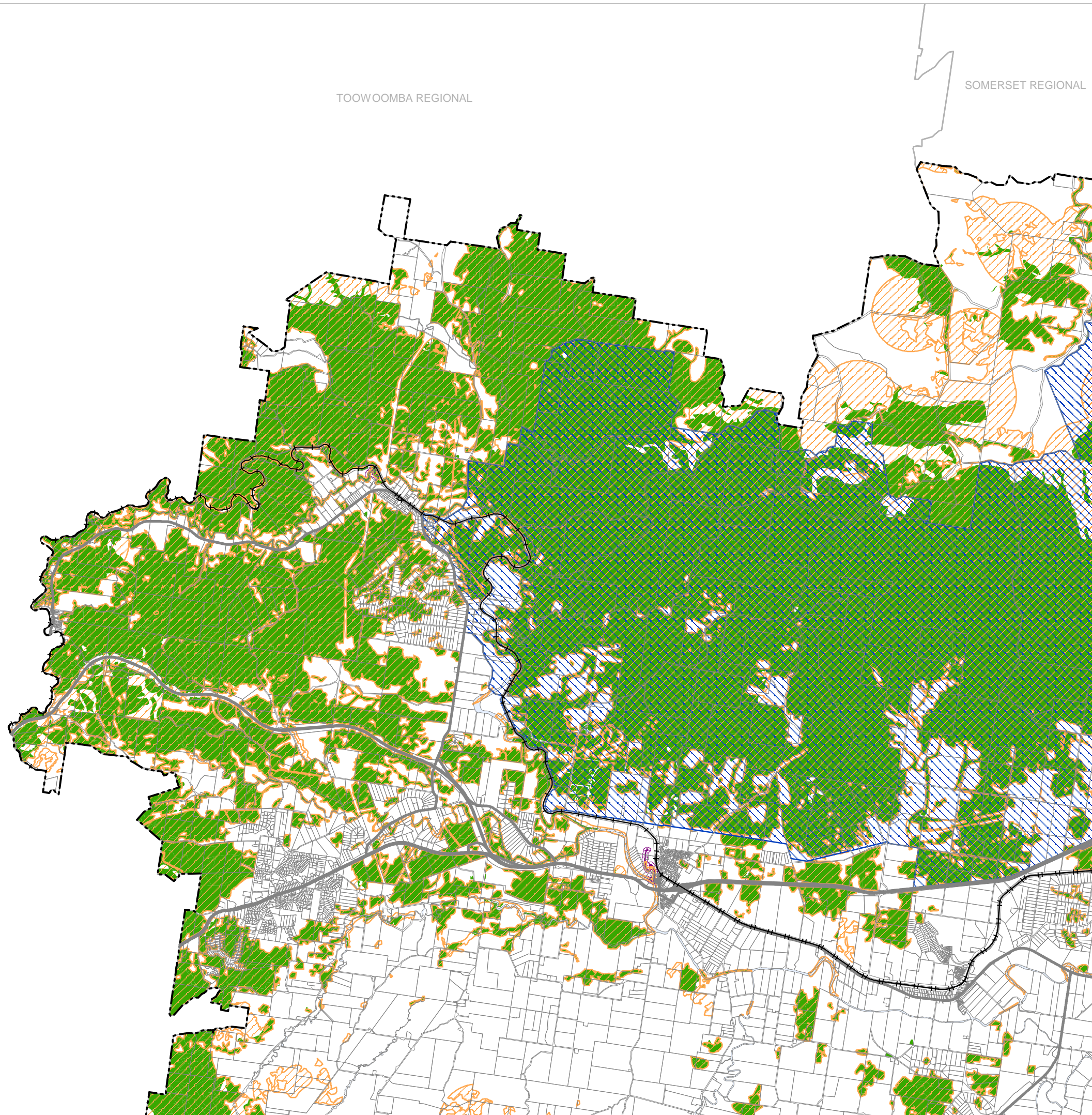
- Koala Priority Area
- Koala Habitat Area
- Wildlife Habitat

#### Matters of Local Environmental Significance (MLES)

- Flying fox roost
- Flying fox separation areas

#### Other Features

- Major Road
- Railway Network
- Property Boundary
- Local Government Boundary
- Watercourse or Waterbody



#### NOTE

Refer to online or electronic mapping where layers overlap or labels obstruct the data on the map.

#### MAP INFORMATION

Based on or contains data sourced from the State Government which gives no warranty in relation to the data (including accuracy, reliability, completeness or suitability) and accepts no liability (including without limitation, liability in negligence) for any loss, damage or costs (including consequential damage) relating to any use of the data.  
© Copyright Lockyer Valley Regional Council 2024

#### DATA SOURCES

Cadastral data weekly - whole of State Queensland, Rail network - Queensland, Queensland roads and tracks, State controlled roads surveyed centreline - Queensland; © State of Queensland (Department of Resources) 2023. Koala Priority Areas v1.0, Koala Habitat Areas v2.0, MSES - Regulated vegetation - essential habitat, MSES - wildlife habitat - endangered or vulnerable wildlife, MSES - wildlife habitat - special least concern animal; © State of Queensland (Department of Environment and Science) 2023

Geocentric Datum of Australia (GDA2020 / MGA zone 56)



Commencement Date: 22 July 2024

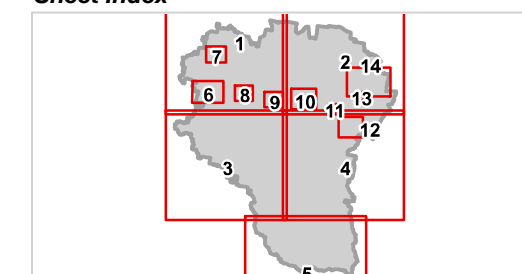
Approx Scale @ A3: 1:100,000

0 5



kilometres

#### Sheet Index







REGIONAL COUNCIL

SOMERSET REGIONAL

OM3B Biodiversity - Wildlife Habitat overlay map

Matters of State Environmental Significance (MSES)

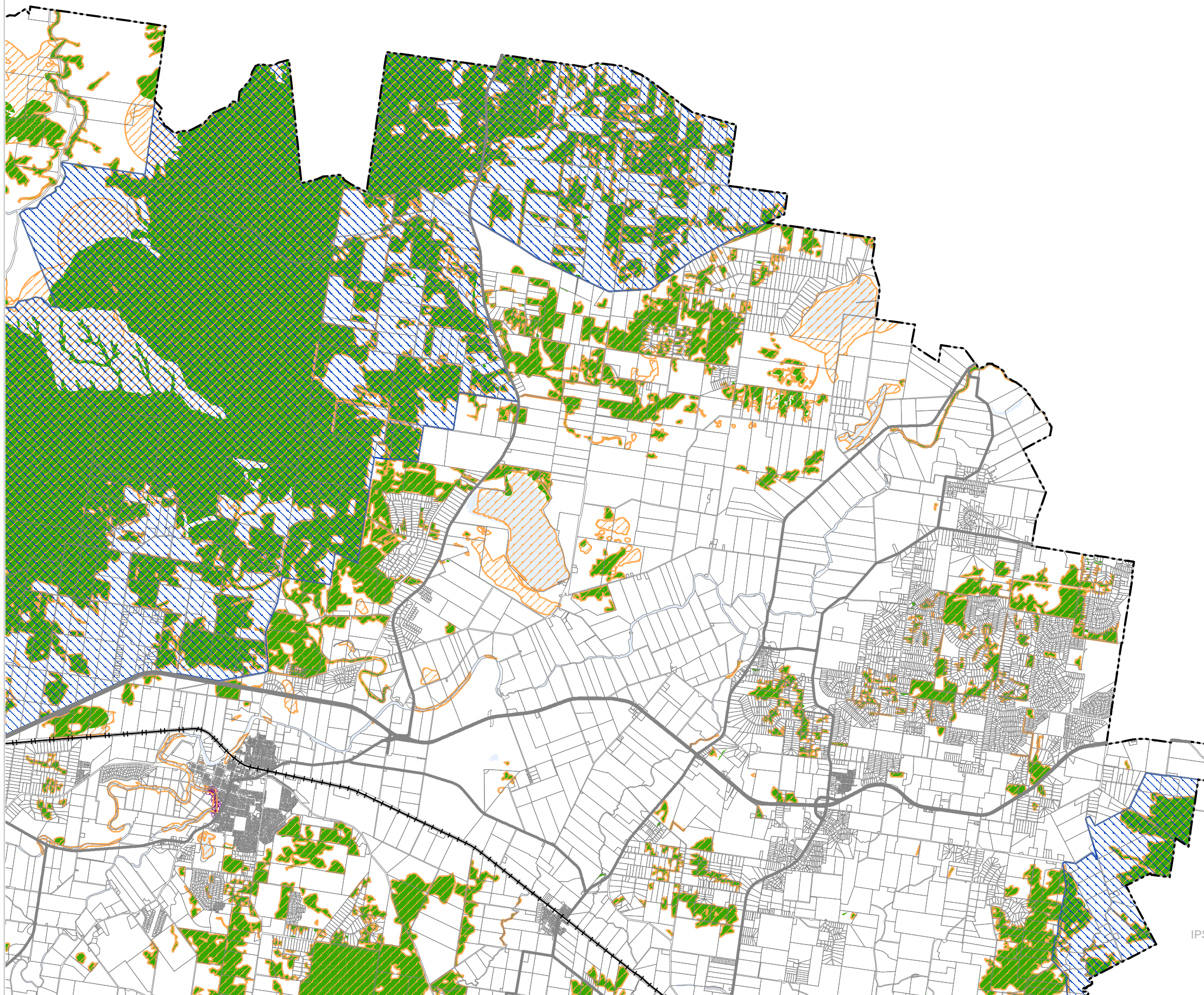
- Koala Priority Area
- Koala Habitat Area
- Wildlife Habitat

Matters of Local Environmental Significance (MLES)

- Flying fox roost
- Flying fox separation areas

Other Features

- Major Road
- Railway Network
- Property Boundary
- Local Government Boundary
- Watercourse or Waterbody



IPSWICH CITY

NOTE

Refer to online or electronic mapping where layers overlap or labels obstruct the data on the map.

MAP INFORMATION

Based on or contains data sourced from the State Government which gives no warranty in relation to the data (including accuracy, reliability, completeness or suitability) and accepts no liability (including without limitation, liability in negligence) for any loss, damage or costs (including consequential damage) relating to any use of the data.

© Copyright Lockyer Valley Regional Council 2024

DATA SOURCES

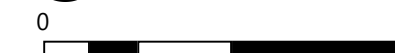
Cadastral data weekly - whole of State Queensland, Rail network - Queensland, Queensland roads and tracks, State controlled roads surveyed centreline - Queensland; © State of Queensland (Department of Resources) 2023. Koala Priority Areas v1.0, Koala Habitat Areas v2.0, MSES - Regulated vegetation - essential habitat, MSES - wildlife habitat - endangered or vulnerable wildlife, MSES - wildlife habitat - special least concern animal; © State of Queensland (Department of Environment and Science) 2023

Geocentric Datum of Australia (GDA2020 / MGA zone 56)

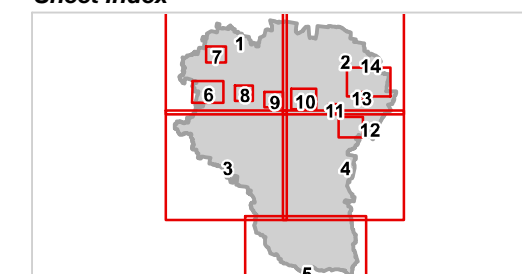


Commencement Date: 22 July 2024

Approx Scale @ A3: 1:100,000



Sheet Index



OM3B Biodiversity - Wildlife Habitat overlay LGA north-east-02







REGIONAL COUNCIL

### OM3B Biodiversity - Wildlife Habitat overlay map


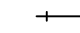


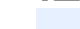
**Matters of State Environmental Significance (MSES)**

-  Koala Priority Area
-  Koala Habitat Area
-  Wildlife Habitat

**Matters of Local Environmental Significance (MLES)**

-  Flying fox roost
-  Flying fox separation areas

**Other Features**

-  Major Road
-  Railway Network
-  Property Boundary
-  Local Government Boundary
-  Watercourse or Waterbody

**NOTE**

Refer to online or electronic mapping where layers overlap or labels obstruct the data on the map.

**MAP INFORMATION**

Based on or contains data sourced from the State Government which gives no warranty in relation to the data (including accuracy, reliability, completeness or suitability) and accepts no liability (including without limitation, liability in negligence) for any loss, damage or costs (including consequential damage) relating to any use of the data.  
© Copyright Lockyer Valley Regional Council 2024

**DATA SOURCES**

Cadastral data weekly - whole of State Queensland, Rail network - Queensland, Queensland roads and tracks, State controlled roads surveyed centreline - Queensland: © State of Queensland (Department of Resources) 2023. Koala Priority Areas v1.0, Koala Habitat Areas v2.0, MSES - Regulated vegetation - essential habitat, MSES - wildlife habitat - endangered or vulnerable wildlife, MSES - wildlife habitat - special least concern animal: © State of Queensland (Department of Environment and Science) 2023

Geocentric Datum of Australia (GDA2020 / MGA zone 56)



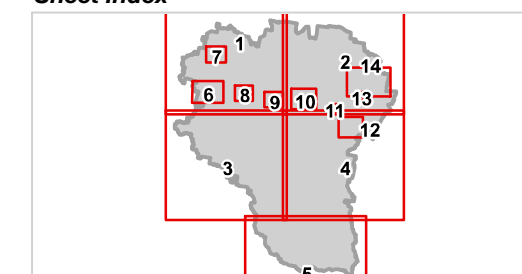
Commencement Date: 22 July 2024

Approx Scale @ A3: 1:100,000

0 5

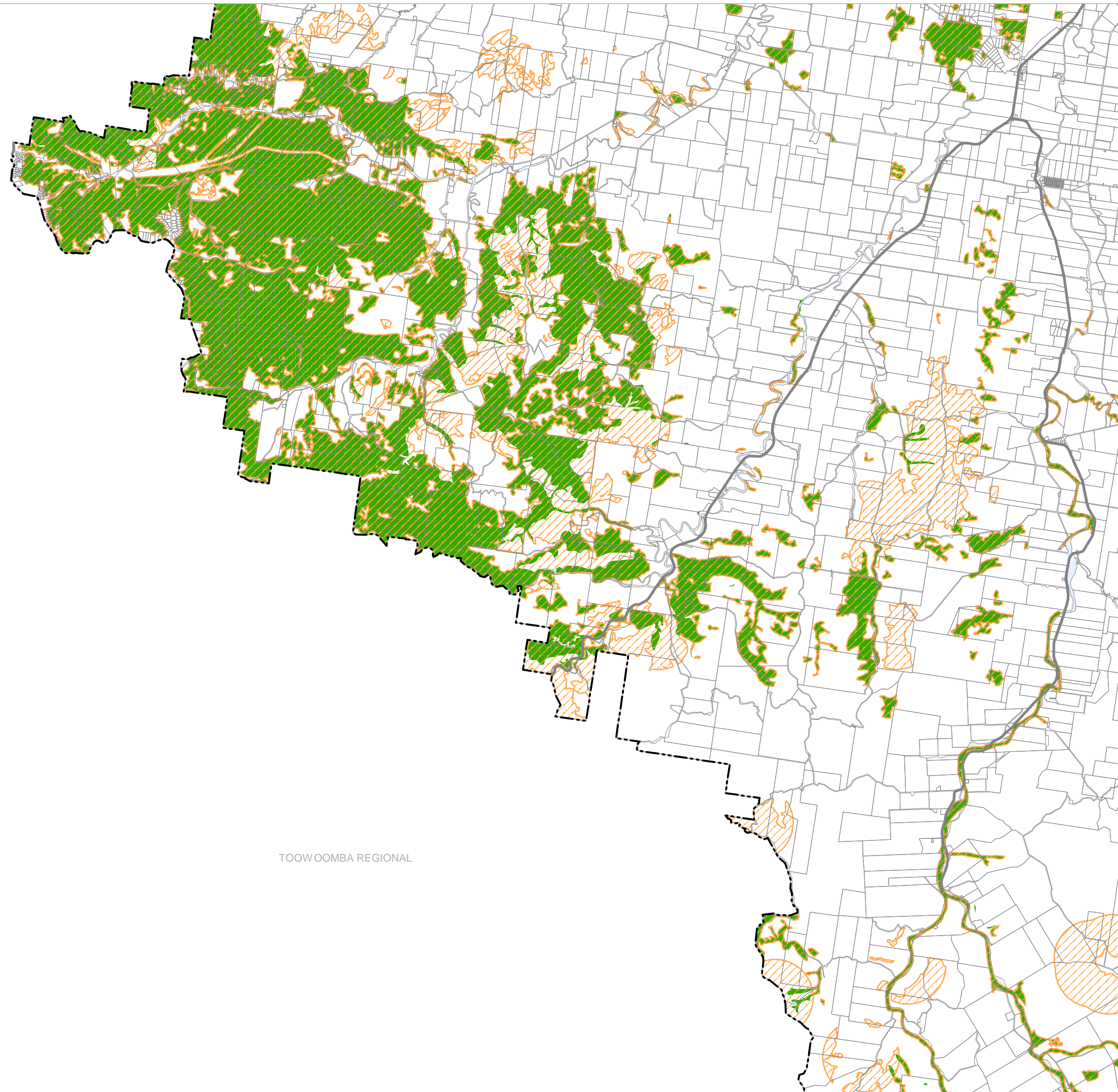
kilometres

**Sheet Index**



**OM3B Biodiversity - Wildlife Habitat overlay  
LGA south-west-03**

TOOWOOMBA REGIONAL









REGIONAL COUNCIL

### OM3B Biodiversity - Wildlife Habitat overlay map


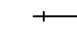


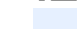
#### Matters of State Environmental Significance (MSES)

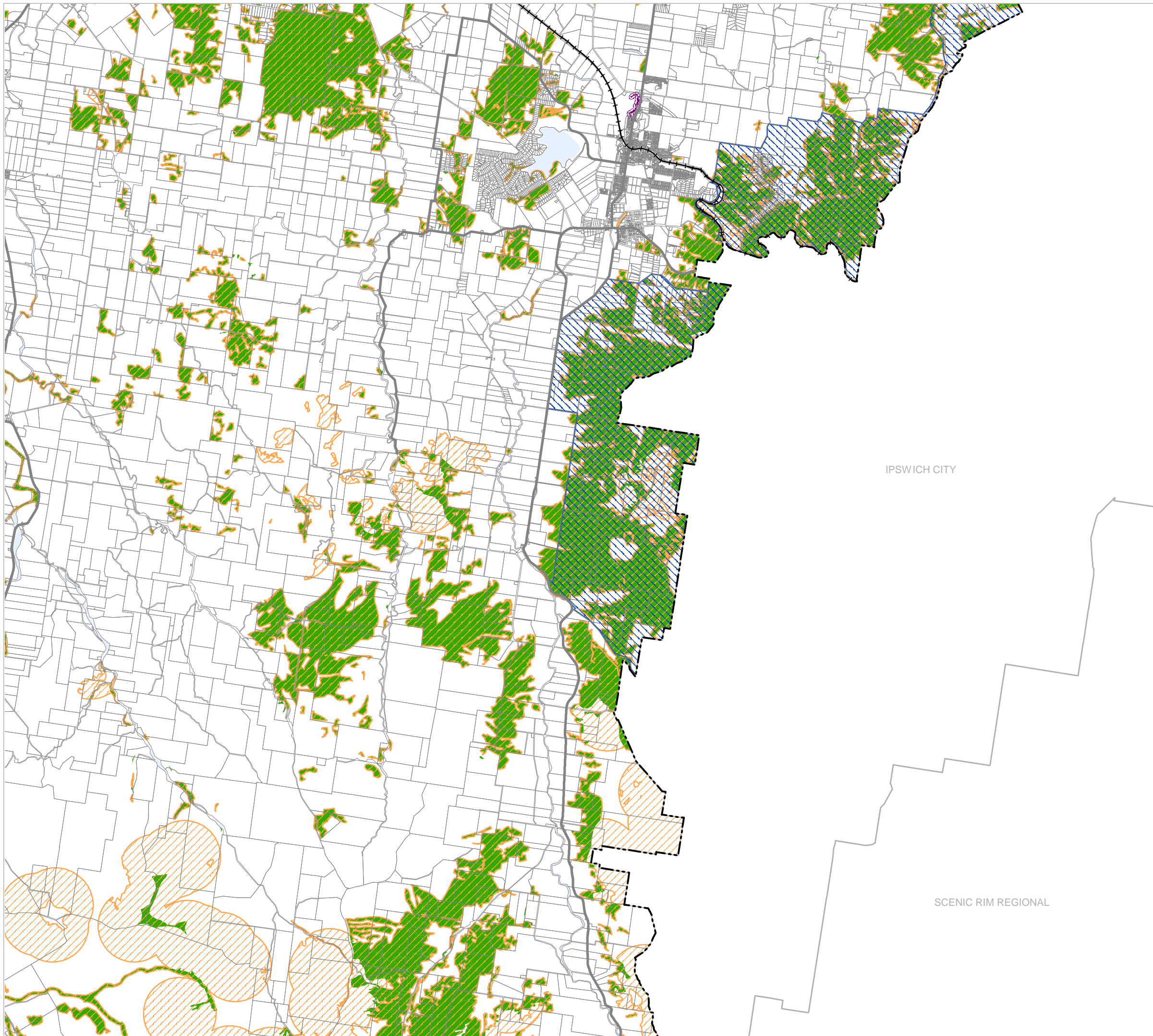
-  Koala Priority Area
-  Koala Habitat Area
-  Wildlife Habitat

#### Matters of Local Environmental Significance (MLES)

-  Flying fox roost
-  Flying fox separation areas

#### Other Features

-  Major Road
-  Railway Network
-  Property Boundary
-  Local Government Boundary
-  Watercourse or Waterbody



IPSWICH CITY

SCENIC RIM REGIONAL

#### NOTE

Refer to online or electronic mapping where layers overlap or labels obstruct the data on the map.

#### MAP INFORMATION

Based on or contains data sourced from the State Government which gives no warranty in relation to the data (including accuracy, reliability, completeness or suitability) and accepts no liability (including without limitation, liability in negligence) for any loss, damage or costs (including consequential damage) relating to any use of the data.  
© Copyright Lockyer Valley Regional Council 2024

#### DATA SOURCES

Cadastral data weekly - whole of State Queensland, Rail network - Queensland, Queensland roads and tracks, State controlled roads surveyed centreline - Queensland: © State of Queensland (Department of Resources) 2023. Koala Priority Areas v1.0, Koala Habitat Areas v2.0, MSES - Regulated vegetation - essential habitat, MSES - wildlife habitat - endangered or vulnerable wildlife, MSES - wildlife habitat - special least concern animal: © State of Queensland (Department of Environment and Science) 2023

Geocentric Datum of Australia (GDA2020 / MGA zone 56)

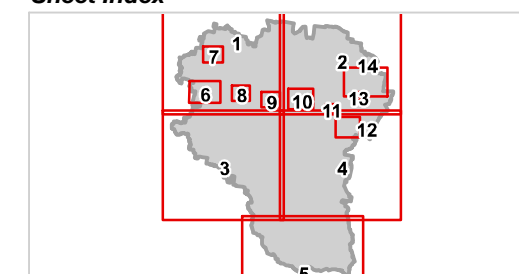


Commencement Date: 22 July 2024

Approx Scale @ A3: 1:100,000



#### Sheet Index







# Lockyer Valley Regional Council Planning Scheme

REGIONAL COUNCIL

## OM3B Biodiversity - Wildlife Habitat overlay map

### Matters of State Environmental Significance (MSES)

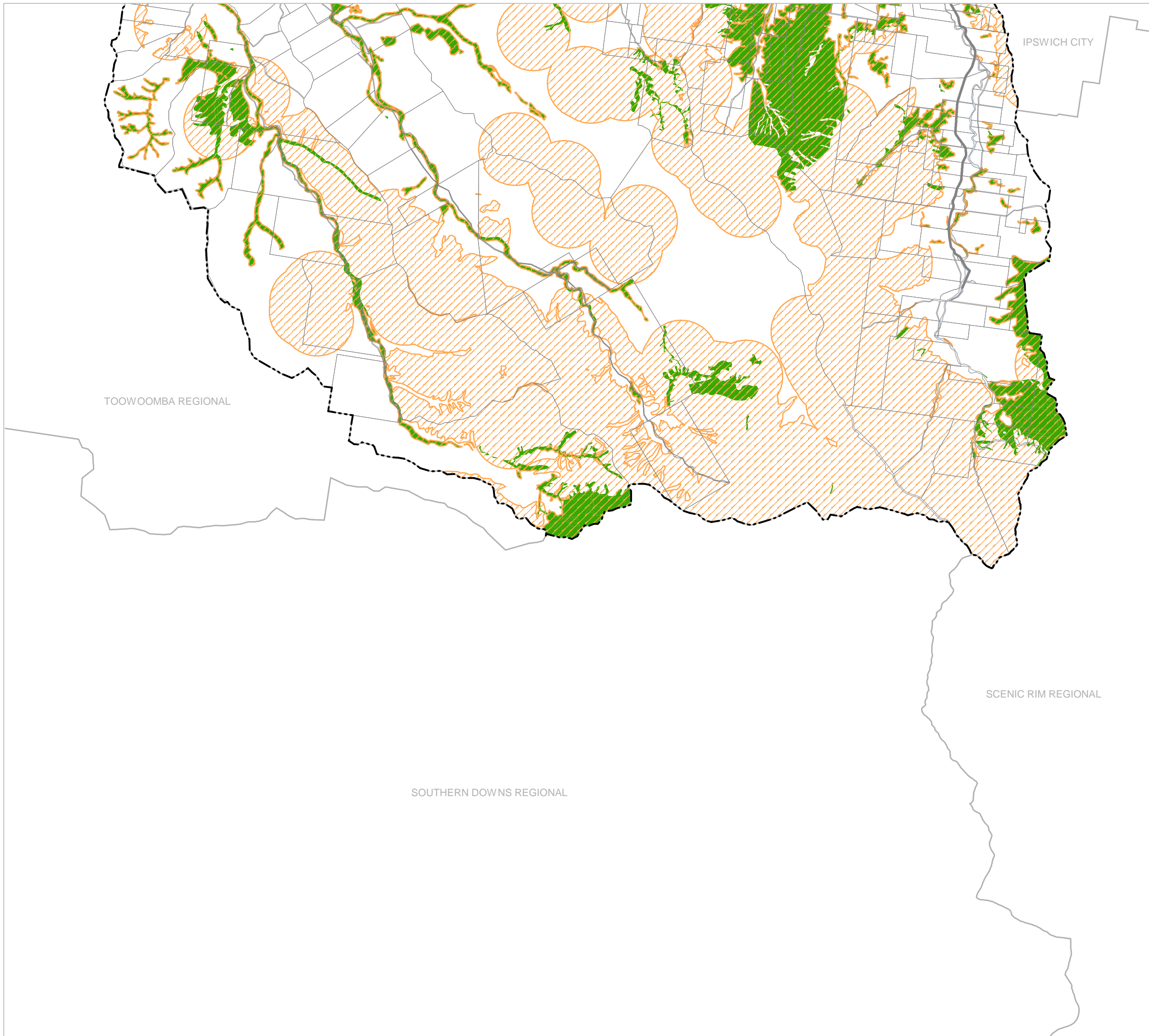
- Koala Priority Area
- Koala Habitat Area
- Wildlife Habitat

### Matters of Local Environmental Significance (MLES)

- Flying fox roost
- Flying fox separation areas

### Other Features

- Major Road
- Railway Network
- Property Boundary
- Local Government Boundary
- Watercourse or Waterbody



### NOTE

Refer to online or electronic mapping where layers overlap or labels obstruct the data on the map.

### MAP INFORMATION

Based on or contains data sourced from the State Government which gives no warranty in relation to the data (including accuracy, reliability, completeness or suitability) and accepts no liability (including without limitation, liability in negligence) for any loss, damage or costs (including consequential damage) relating to any use of the data.  
© Copyright Lockyer Valley Regional Council 2024

### DATA SOURCES

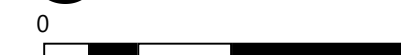
Cadastral data weekly - whole of State Queensland, Rail network - Queensland, Queensland roads and tracks, State controlled roads surveyed centreline - Queensland: © State of Queensland (Department of Resources) 2023. Koala Priority Areas v1.0, Koala Habitat Areas v2.0, MSES - Regulated vegetation - essential habitat, MSES - wildlife habitat - endangered or vulnerable wildlife, MSES - wildlife habitat - special least concern animal: © State of Queensland (Department of Environment and Science) 2023

Geocentric Datum of Australia (GDA2020 / MGA zone 56)

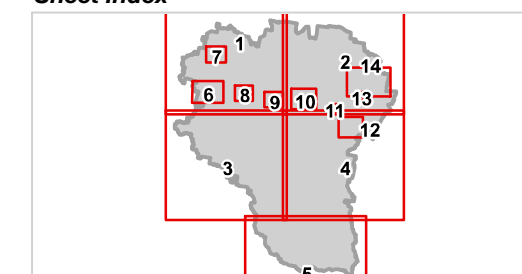


Commencement Date: 22 July 2024

Approx Scale @ A3: 1:100,000



### Sheet Index



OM3B Biodiversity - Wildlife Habitat overlay  
LGA south-05





REGIONAL COUNCIL

OM3B Biodiversity - Wildlife Habitat overlay map

Matters of State Environmental Significance (MSES)

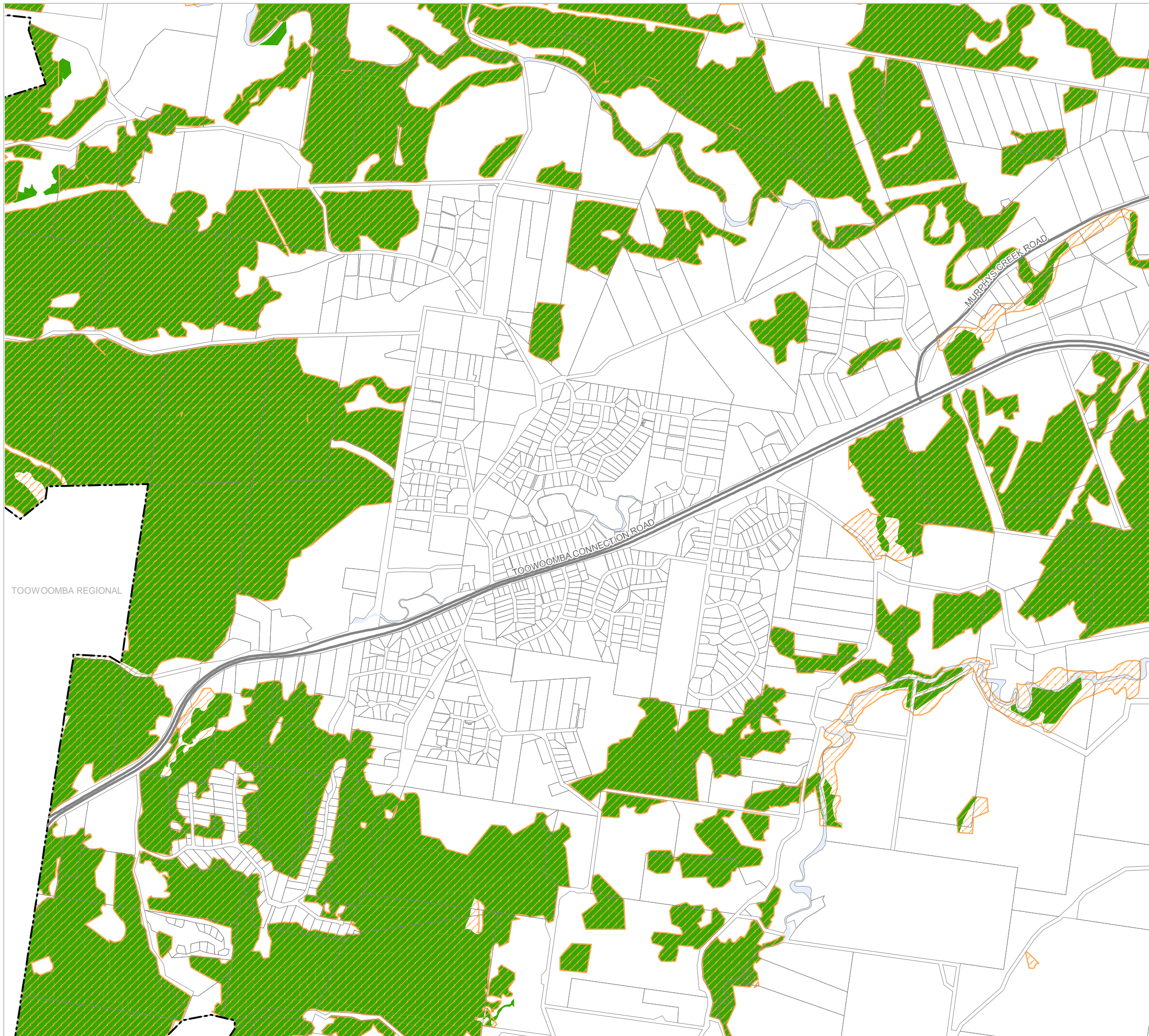
- Koala Priority Area
- Koala Habitat Area
- Wildlife Habitat

Matters of Local Environmental Significance (MLES)

- Flying fox roost
- Flying fox separation areas

Other Features

- Major Road
- Railway Network
- Property Boundary
- Local Government Boundary
- Watercourse or Waterbody



TOOWOOMBA REGIONAL

NOTE

Refer to online or electronic mapping where layers overlap or labels obstruct the data on the map.

MAP INFORMATION

Based on or contains data sourced from the State Government which gives no warranty in relation to the data (including accuracy, reliability, completeness or suitability) and accepts no liability (including without limitation, liability in negligence) for any loss, damage or costs (including consequential damage) relating to any use of the data.

© Copyright Lockyer Valley Regional Council 2024

DATA SOURCES

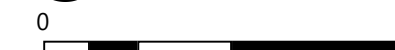
Cadastral data weekly - whole of State Queensland, Rail network - Queensland, Queensland roads and tracks, State controlled roads surveyed centreline - Queensland; © State of Queensland (Department of Resources) 2023. Koala Priority Areas v1.0, Koala Habitat Areas v2.0, MSES - Regulated vegetation - essential habitat, MSES - wildlife habitat - endangered or vulnerable wildlife, MSES - wildlife habitat - special least concern animal; © State of Queensland (Department of Environment and Science) 2023

Geocentric Datum of Australia (GDA2020 / MGA zone 56)



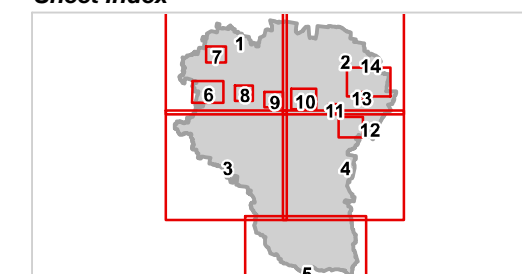
Commencement Date: 22 July 2024

Approx Scale @ A3: 1:20,000



kilometres

Sheet Index







REGIONAL COUNCIL

### OM3B Biodiversity - Wildlife Habitat overlay map

#### Matters of State Environmental Significance (MSES)

- Koala Priority Area
- Koala Habitat Area
- Wildlife Habitat

#### Matters of Local Environmental Significance (MLES)

- Flying fox roost
- Flying fox separation areas

#### Other Features

- Major Road
- Railway Network
- Property Boundary
- Local Government Boundary
- Watercourse or Waterbody



#### NOTE

Refer to online or electronic mapping where layers overlap or labels obstruct the data on the map.

#### MAP INFORMATION

Based on or contains data sourced from the State Government which gives no warranty in relation to the data (including accuracy, reliability, completeness or suitability) and accepts no liability (including without limitation, liability in negligence) for any loss, damage or costs (including consequential damage) relating to any use of the data.  
© Copyright Lockyer Valley Regional Council 2024

#### DATA SOURCES

Cadastral data weekly - whole of State Queensland, Rail network - Queensland, Queensland roads and tracks, State controlled roads surveyed centreline - Queensland; © State of Queensland (Department of Resources) 2023. Koala Priority Areas v1.0, Koala Habitat Areas v2.0, MSES - Regulated vegetation - essential habitat, MSES - wildlife habitat - endangered or vulnerable wildlife, MSES - wildlife habitat - special least concern animal; © State of Queensland (Department of Environment and Science) 2023

Geocentric Datum of Australia (GDA2020 / MGA zone 56)



Commencement Date: 22 July 2024

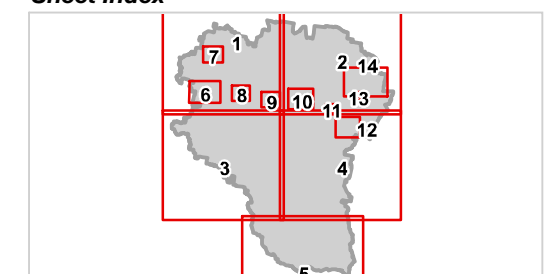
Approx Scale @ A3: 1:15,000

0 0.5



kilometres

#### Sheet Index







REGIONAL COUNCIL

OM3B Biodiversity - Wildlife Habitat overlay map

Matters of State Environmental Significance (MSES)

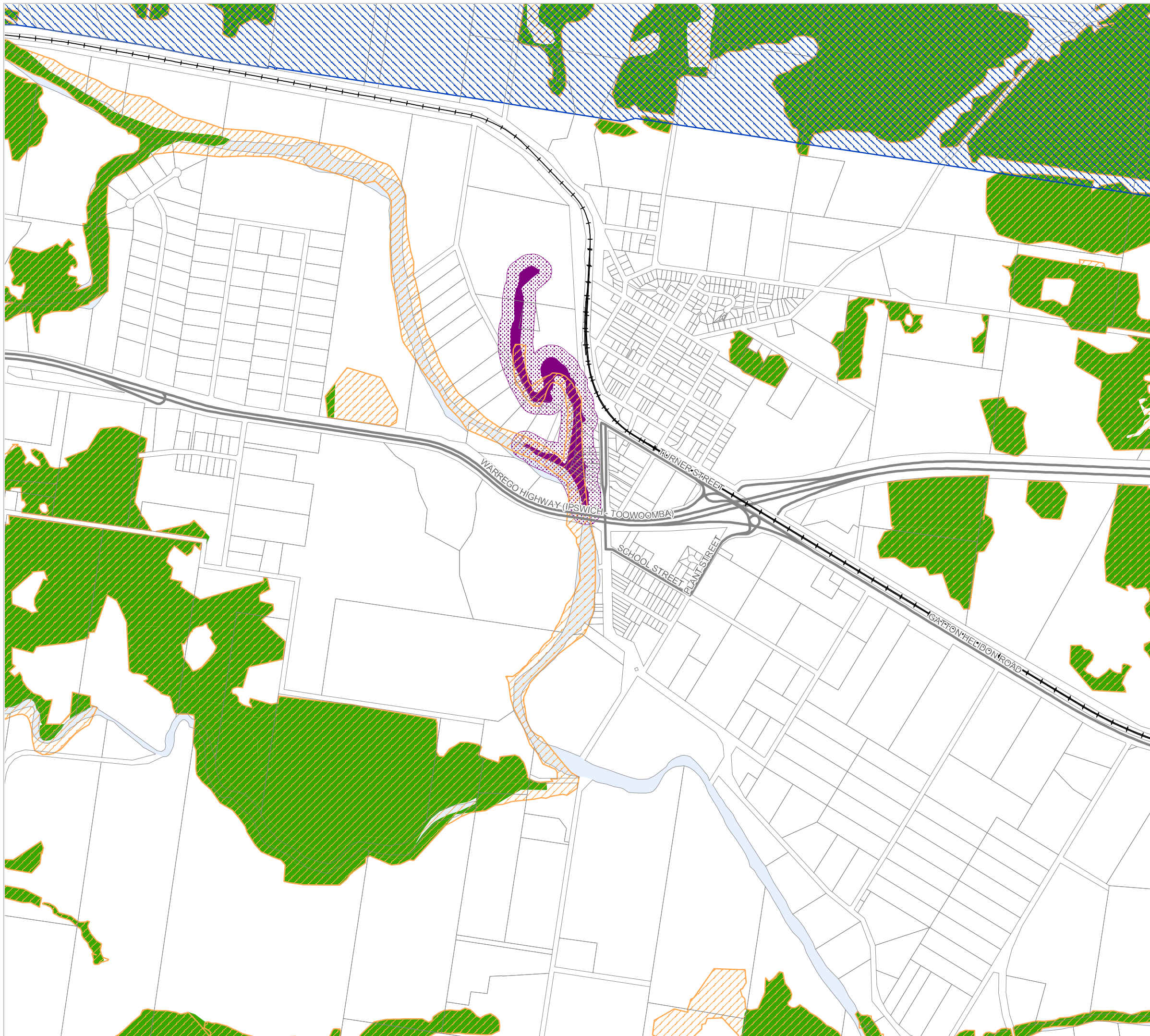
- Koala Priority Area
- Koala Habitat Area
- Wildlife Habitat

Matters of Local Environmental Significance (MLES)

- Flying fox roost
- Flying fox separation areas

Other Features

- Major Road
- Railway Network
- Property Boundary
- Local Government Boundary
- Watercourse or Waterbody



NOTE

Refer to online or electronic mapping where layers overlap or labels obstruct the data on the map.

MAP INFORMATION

Based on or contains data sourced from the State Government which gives no warranty in relation to the data (including accuracy, reliability, completeness or suitability) and accepts no liability (including without limitation, liability in negligence) for any loss, damage or costs (including consequential damage) relating to any use of the data.

© Copyright Lockyer Valley Regional Council 2024

DATA SOURCES

Cadastral data weekly - whole of State Queensland, Rail network - Queensland, Queensland roads and tracks, State controlled roads surveyed centreline - Queensland: © State of Queensland (Department of Resources) 2023. Koala Priority Areas v1.0, Koala Habitat Areas v2.0, MSES - Regulated vegetation - essential habitat, MSES - wildlife habitat - endangered or vulnerable wildlife, MSES - wildlife habitat - special least concern animal: © State of Queensland (Department of Environment and Science) 2023

Geocentric Datum of Australia (GDA2020 / MGA zone 56)



Commencement Date: 22 July 2024

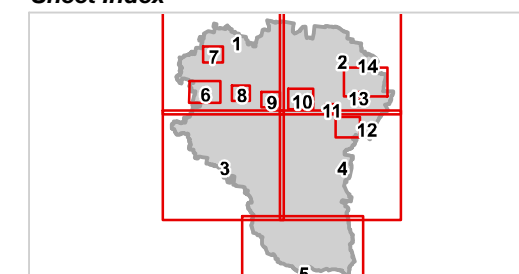
Approx Scale @ A3: 1:15,000

0 0.5



kilometres

Sheet Index







REGIONAL COUNCIL

### OM3B Biodiversity - Wildlife Habitat overlay map

#### Matters of State Environmental Significance (MSES)

- Koala Priority Area
- Koala Habitat Area
- Wildlife Habitat

#### Matters of Local Environmental Significance (MLES)

- Flying fox roost
- Flying fox separation areas

#### Other Features

- Major Road
- Railway Network
- Property Boundary
- Local Government Boundary
- Watercourse or Waterbody



#### NOTE

Refer to online or electronic mapping where layers overlap or labels obstruct the data on the map.

#### MAP INFORMATION

Based on or contains data sourced from the State Government which gives no warranty in relation to the data (including accuracy, reliability, completeness or suitability) and accepts no liability (including without limitation, liability in negligence) for any loss, damage or costs (including consequential damage) relating to any use of the data.  
© Copyright Lockyer Valley Regional Council 2024

#### DATA SOURCES

Cadastral data weekly - whole of State Queensland, Rail network - Queensland, Queensland roads and tracks, State controlled roads surveyed centreline - Queensland; © State of Queensland (Department of Resources) 2023. Koala Priority Areas v1.0, Koala Habitat Areas v2.0, MSES - Regulated vegetation - essential habitat, MSES - wildlife habitat - endangered or vulnerable wildlife, MSES - wildlife habitat - special least concern animal; © State of Queensland (Department of Environment and Science) 2023

Geocentric Datum of Australia (GDA2020 / MGA zone 56)



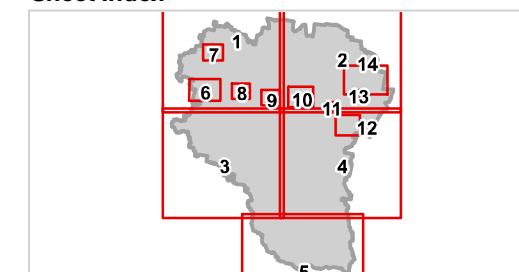
Commencement Date: 22 July 2024

Approx Scale @ A3: 1:15,000



kilometres

#### Sheet Index







REGIONAL COUNCIL

### OM3B Biodiversity - Wildlife Habitat overlay map

#### Matters of State Environmental Significance (MSES)

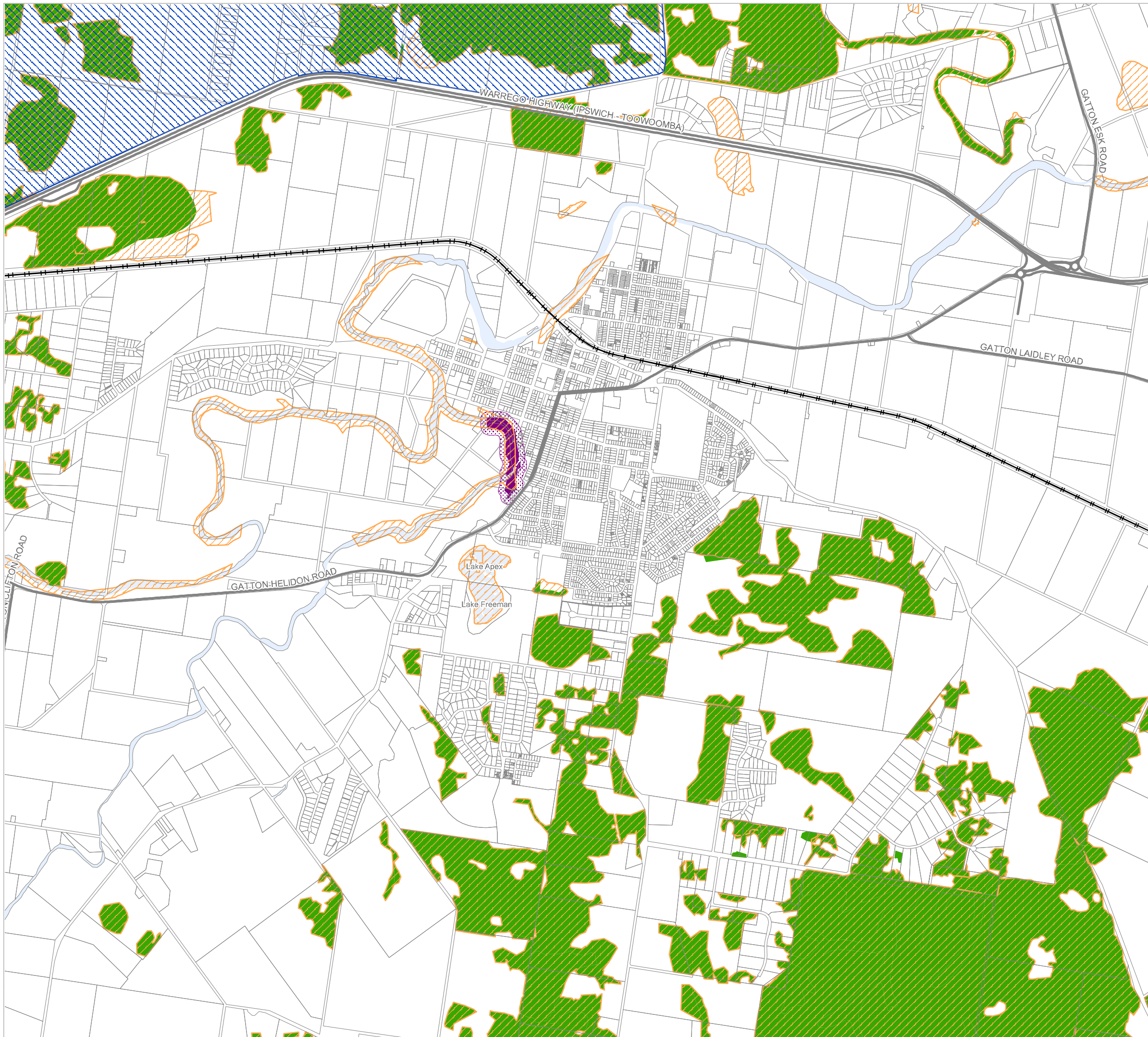
- Koala Priority Area
- Koala Habitat Area
- Wildlife Habitat

#### Matters of Local Environmental Significance (MLES)

- Flying fox roost
- Flying fox separation areas

#### Other Features

- Major Road
- Railway Network
- Property Boundary
- Local Government Boundary
- Watercourse or Waterbody



#### NOTE

Refer to online or electronic mapping where layers overlap or labels obstruct the data on the map.

#### MAP INFORMATION

Based on or contains data sourced from the State Government which gives no warranty in relation to the data (including accuracy, reliability, completeness or suitability) and accepts no liability (including without limitation, liability in negligence) for any loss, damage or costs (including consequential damage) relating to any use of the data.  
© Copyright Lockyer Valley Regional Council 2024

#### DATA SOURCES

Cadastral data weekly - whole of State Queensland, Rail network - Queensland, Queensland roads and tracks, State controlled roads surveyed centreline - Queensland; © State of Queensland (Department of Resources) 2023. Koala Priority Areas v1.0, Koala Habitat Areas v2.0, MSES - Regulated vegetation - essential habitat, MSES - wildlife habitat - endangered or vulnerable wildlife, MSES - wildlife habitat - special least concern animal; © State of Queensland (Department of Environment and Science) 2023

Geocentric Datum of Australia (GDA2020 / MGA zone 56)

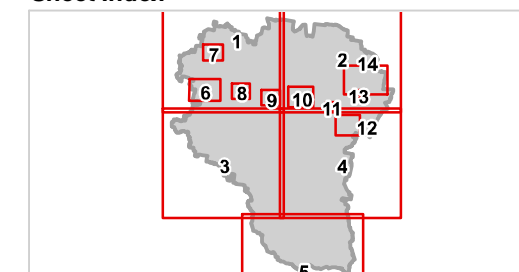


Commencement Date: 22 July 2024

Approx Scale @ A3: 1:30,000



#### Sheet Index







# Lockyer Valley Regional Council Planning Scheme

REGIONAL COUNCIL

## OM3B Biodiversity - Wildlife Habitat overlay map

### Matters of State Environmental Significance (MSES)

- Koala Priority Area
- Koala Habitat Area
- Wildlife Habitat

### Matters of Local Environmental Significance (MLES)

- Flying fox roost
- Flying fox separation areas

### Other Features

- Major Road
- Railway Network
- Property Boundary
- Local Government Boundary
- Watercourse or Waterbody



### NOTE

Refer to online or electronic mapping where layers overlap or labels obstruct the data on the map.

### MAP INFORMATION

Based on or contains data sourced from the State Government which gives no warranty in relation to the data (including accuracy, reliability, completeness or suitability) and accepts no liability (including without limitation, liability in negligence) for any loss, damage or costs (including consequential damage) relating to any use of the data.  
© Copyright Lockyer Valley Regional Council 2024

### DATA SOURCES

Cadastral data weekly - whole of State Queensland, Rail network - Queensland, Queensland roads and tracks, State controlled roads surveyed centreline - Queensland: © State of Queensland (Department of Resources) 2023. Koala Priority Areas v1.0, Koala Habitat Areas v2.0, MSES - Regulated vegetation - essential habitat, MSES - wildlife habitat - endangered or vulnerable wildlife, MSES - wildlife habitat - special least concern animal: © State of Queensland (Department of Environment and Science) 2023

Geocentric Datum of Australia (GDA2020 / MGA zone 56)

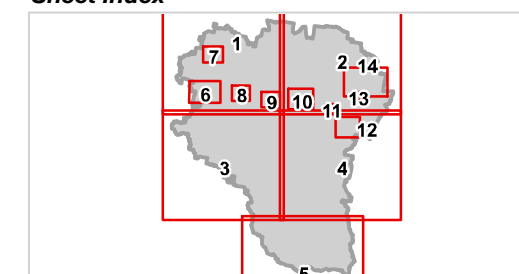


Commencement Date: 22 July 2024

Approx Scale @ A3: 1:7,500



### Sheet Index



## OM3B Biodiversity - Wildlife Habitat overlay Forest Hill-11





REGIONAL COUNCIL

### OM3B Biodiversity - Wildlife Habitat overlay map

#### Matters of State Environmental Significance (MSES)

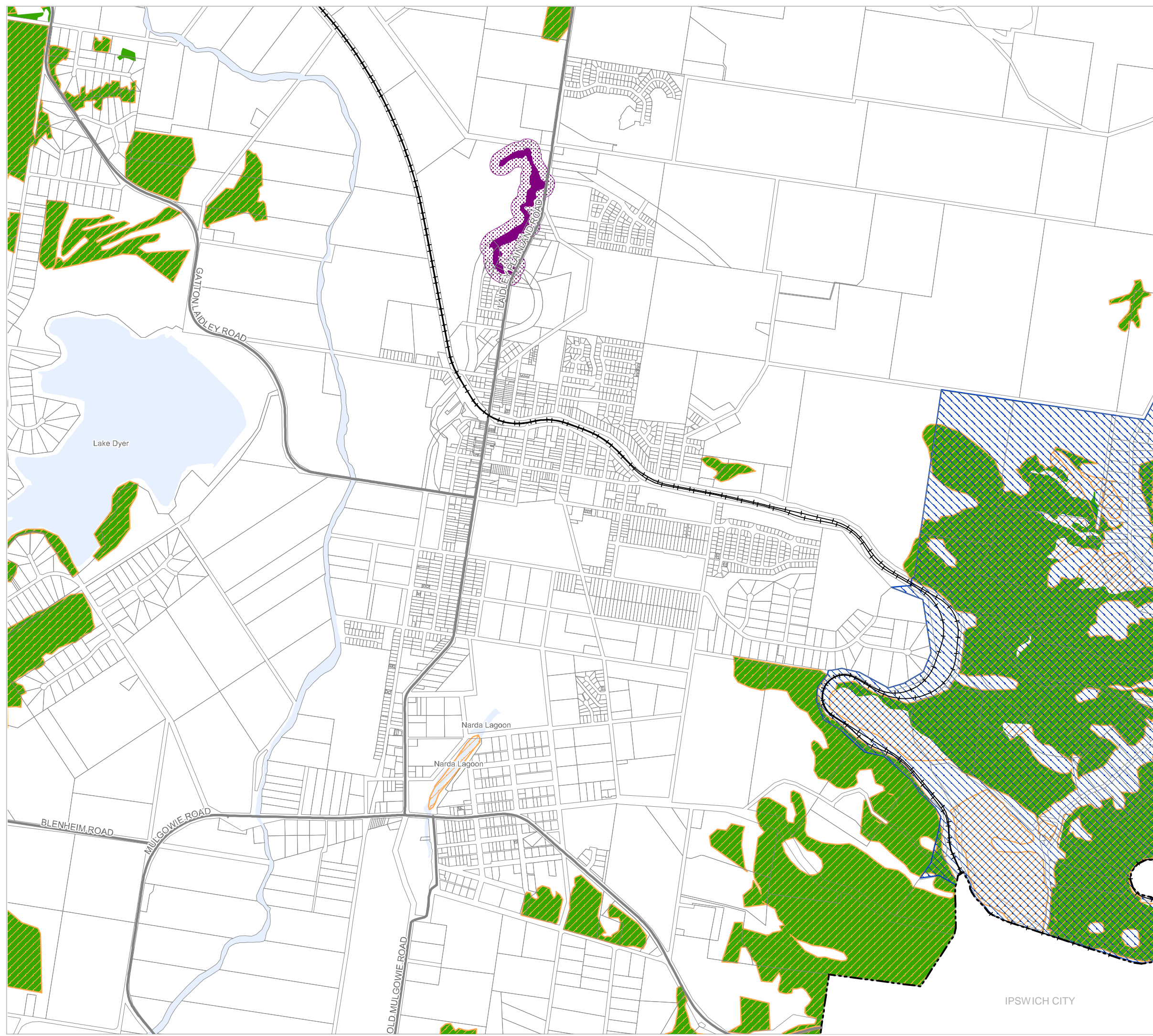
- Koala Priority Area
- Koala Habitat Area
- Wildlife Habitat

#### Matters of Local Environmental Significance (MLES)

- Flying fox roost
- Flying fox separation areas

#### Other Features

- Major Road
- Railway Network
- Property Boundary
- Local Government Boundary
- Watercourse or Waterbody



#### NOTE

Refer to online or electronic mapping where layers overlap or labels obstruct the data on the map.

#### MAP INFORMATION

Based on or contains data sourced from the State Government which gives no warranty in relation to the data (including accuracy, reliability, completeness or suitability) and accepts no liability (including without limitation, liability in negligence) for any loss, damage or costs (including consequential damage) relating to any use of the data.  
© Copyright Lockyer Valley Regional Council 2024

#### DATA SOURCES

Cadastral data weekly - whole of State Queensland, Rail network - Queensland, Queensland roads and tracks, State controlled roads surveyed centreline - Queensland: © State of Queensland (Department of Resources) 2023. Koala Priority Areas v1.0, Koala Habitat Areas v2.0, MSES - Regulated vegetation - essential habitat, MSES - wildlife habitat - endangered or vulnerable wildlife, MSES - wildlife habitat - special least concern animal: © State of Queensland (Department of Environment and Science) 2023

Geocentric Datum of Australia (GDA2020 / MGA zone 56)

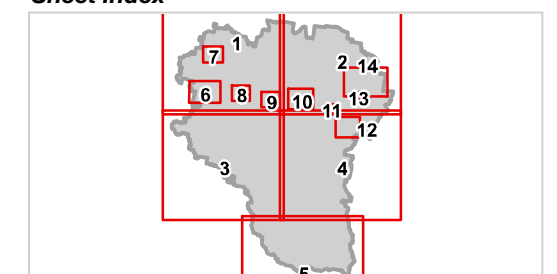


Commencement Date: 22 July 2024

Approx Scale @ A3: 1:20,000



#### Sheet Index



IPSWICH CITY





REGIONAL COUNCIL

OM3B Biodiversity - Wildlife Habitat overlay map

Matters of State Environmental Significance (MSES)

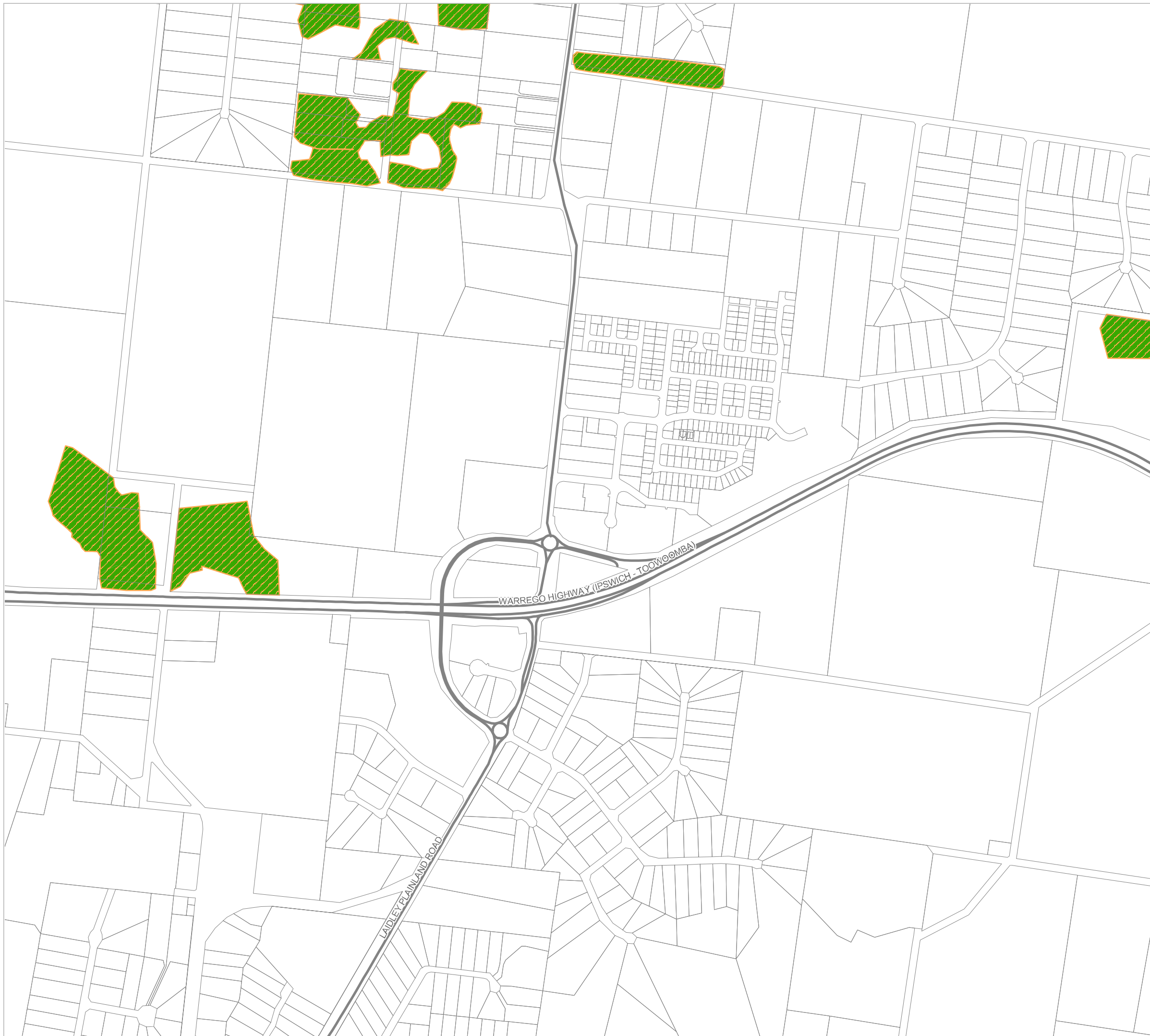
- Koala Priority Area
- Koala Habitat Area
- Wildlife Habitat

Matters of Local Environmental Significance (MLES)

- Flying fox roost
- Flying fox separation areas

Other Features

- Major Road
- Railway Network
- Property Boundary
- Local Government Boundary
- Watercourse or Waterbody



NOTE

Refer to online or electronic mapping where layers overlap or labels obstruct the data on the map.

MAP INFORMATION

Based on or contains data sourced from the State Government which gives no warranty in relation to the data (including accuracy, reliability, completeness or suitability) and accepts no liability (including without limitation, liability in negligence) for any loss, damage or costs (including consequential damage) relating to any use of the data.

© Copyright Lockyer Valley Regional Council 2024

DATA SOURCES

Cadastral data weekly - whole of State Queensland, Rail network - Queensland, Queensland roads and tracks, State controlled roads surveyed centreline - Queensland; © State of Queensland (Department of Resources) 2023. Koala Priority Areas v1.0, Koala Habitat Areas v2.0, MSES - Regulated vegetation - essential habitat, MSES - wildlife habitat - endangered or vulnerable wildlife, MSES - wildlife habitat - special least concern animal; © State of Queensland (Department of Environment and Science) 2023

Geocentric Datum of Australia (GDA2020 / MGA zone 56)



Commencement Date: 22 July 2024

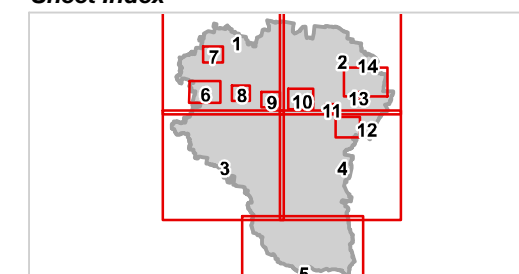
Approx Scale @ A3: 1:10,000

0 0.5



kilometres

Sheet Index







REGIONAL COUNCIL

## OM3B Biodiversity - Wildlife Habitat overlay map

SOMERSET REGIONAL

### Matters of State Environmental Significance (MSES)

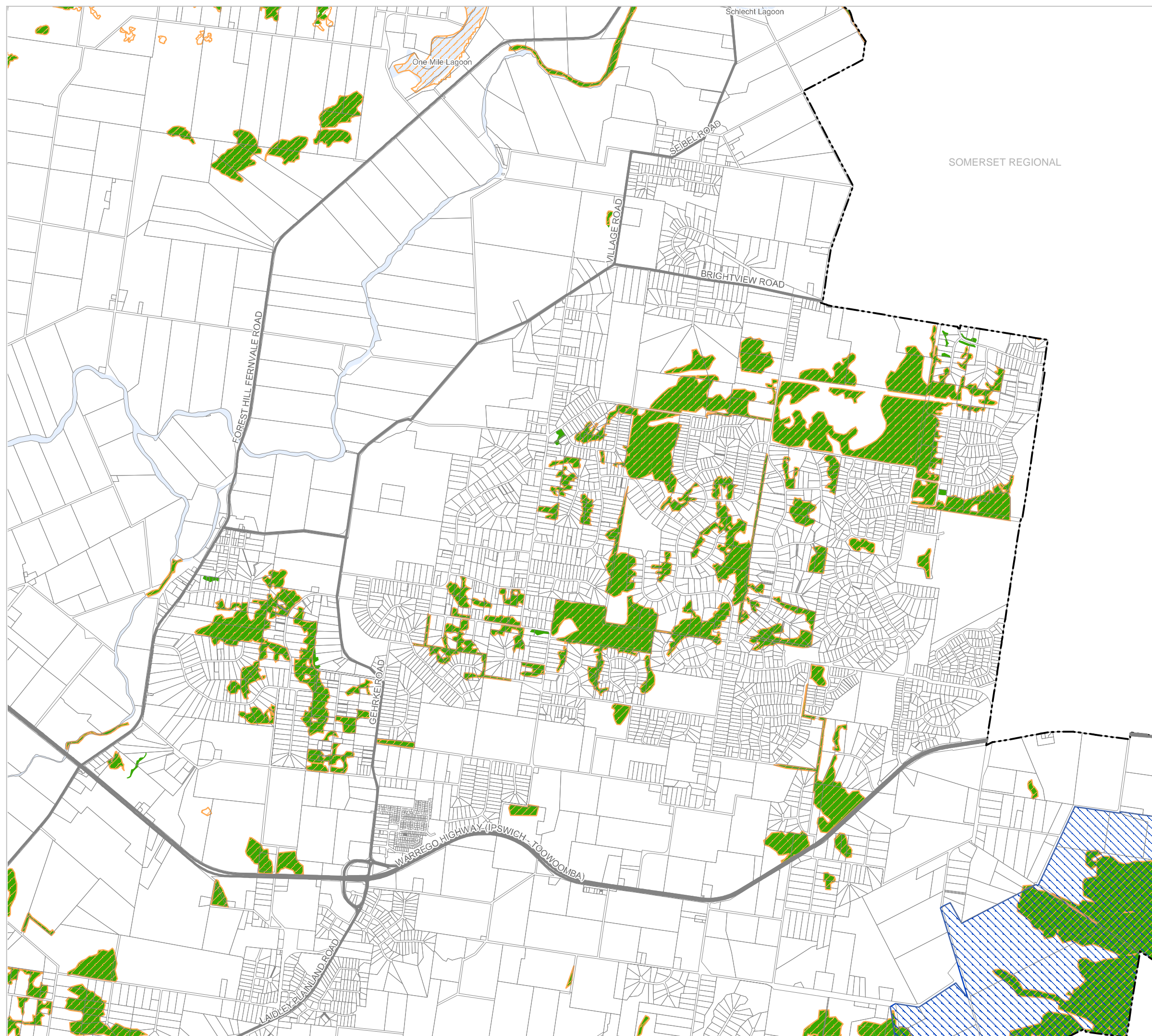
- Koala Priority Area
- Koala Habitat Area
- Wildlife Habitat

### Matters of Local Environmental Significance (MLES)

- Flying fox roost
- Flying fox separation areas

### Other Features

- Major Road
- Railway Network
- Property Boundary
- Local Government Boundary
- Watercourse or Waterbody



### NOTE

Refer to online or electronic mapping where layers overlap or labels obstruct the data on the map.

### MAP INFORMATION

Based on or contains data sourced from the State Government which gives no warranty in relation to the data (including accuracy, reliability, completeness or suitability) and accepts no liability (including without limitation, liability in negligence) for any loss, damage or costs (including consequential damage) relating to any use of the data.  
© Copyright Lockyer Valley Regional Council 2024

### DATA SOURCES

Cadastral data weekly - whole of State Queensland, Rail network - Queensland, Queensland roads and tracks, State controlled roads surveyed centreline - Queensland; © State of Queensland (Department of Resources) 2023. Koala Priority Areas v1.0, Koala Habitat Areas v2.0, MSES - Regulated vegetation - essential habitat, MSES - wildlife habitat - endangered or vulnerable wildlife, MSES - wildlife habitat - special least concern animal; © State of Queensland (Department of Environment and Science) 2023

Geocentric Datum of Australia (GDA2020 / MGA zone 56)



Commencement Date: 22 July 2024

Approx Scale @ A3: 1:40,000

0 2



kilometres

### Sheet Index

