



# Lockyer Valley Regional Council Planning Scheme

REGIONAL COUNCIL

## OM3C Biodiversity - Waterway and Wetland Habitat overlay map

### Matters of State Environmental Significance

Wetlands

### Matters of Local Environmental Significance

Wetlands

### Separation Areas

Waterway and Wetland Separation Area

### Waterways

Stream order 1 and 2

Stream order 3 and 4

Stream order 5 and greater

### Other Features

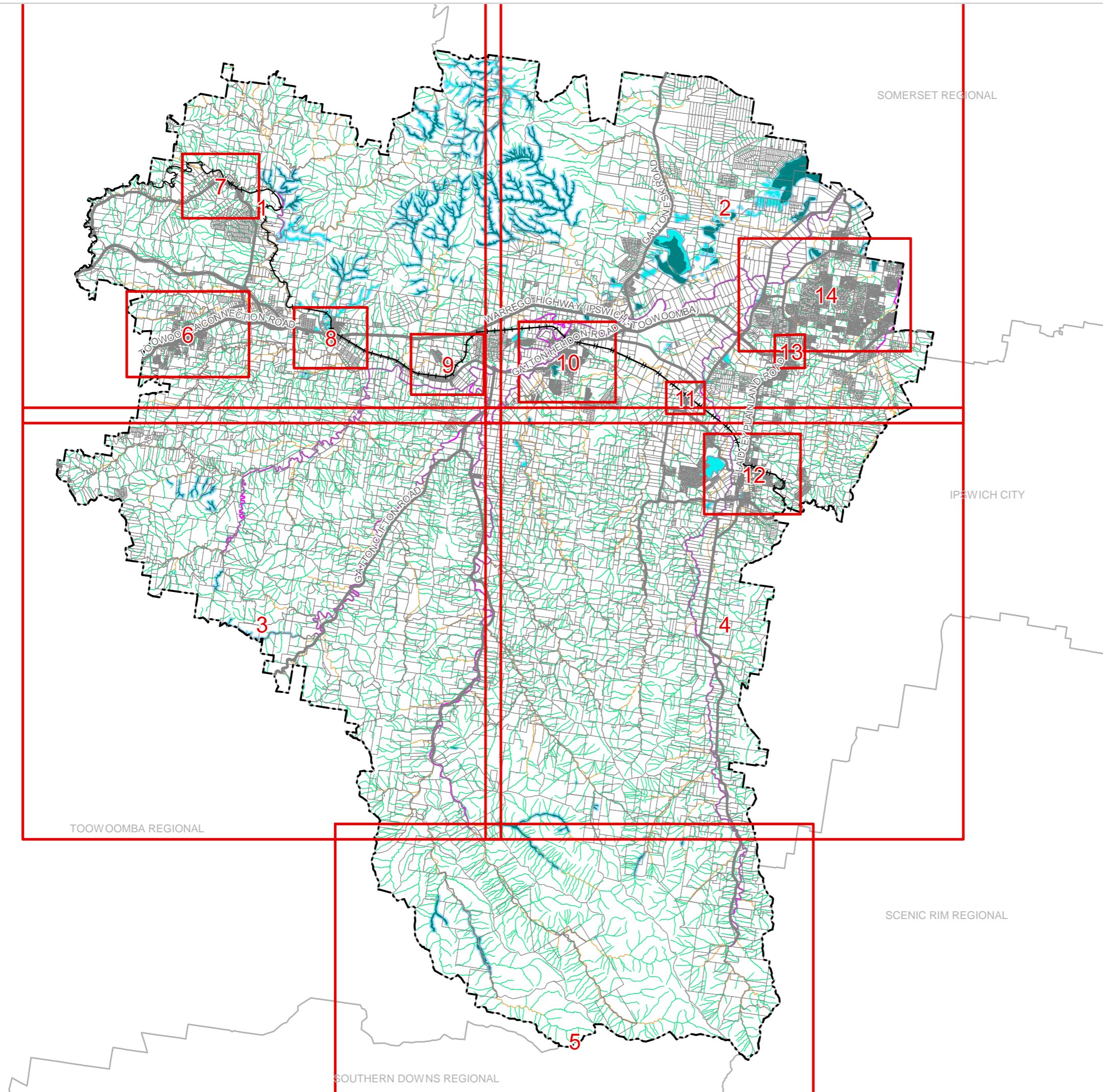
Major Road

Railway Network

Property Boundary

Local Government Boundary

Watercourse or Waterbody



### NOTE

Refer to online or electronic mapping where layers overlap or labels obstruct the data on the map.

### MAP INFORMATION

Based on or contains data sourced from the State Government which gives no warranty in relation to the data (including accuracy, reliability, completeness or suitability) and accepts no liability (including without limitation, liability in negligence) for any loss, damage or costs (including consequential damage) relating to any use of the data.

© Copyright Lockyer Valley Regional Council 2024

### DATA SOURCES

Cadastral data weekly - whole of State Queensland, Rail network - Queensland, Queensland roads and tracks, State controlled roads surveyed centreline - Queensland: © State of Queensland (Department of Resources) 2023. MSES - High ecological significance wetlands, MSES - High ecological value waters - wetlands: © State of Queensland (Department of Environment and Science) 2023

Geocentric Datum of Australia (GDA2020 / MGA zone 56)



Commencement Date: 22 July 2024

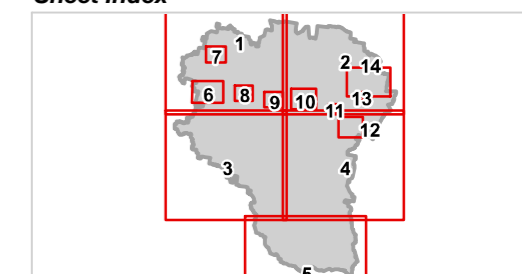
Approx Scale @ A3: 1:250,000

0 10



kilometres

### Sheet Index



OM3C Biodiversity - Wetlands overlay  
Local government area-00



REGIONAL COUNCIL

OM3C Biodiversity - Waterway and Wetland Habitat overlay map

Matters of State Environmental Significance

Wetlands

Matters of Local Environmental Significance

Wetlands

Separation Areas

Waterway and Wetland Separation Area

Waterways

Stream order 1 and 2

Stream order 3 and 4

Stream order 5 and greater

Other Features

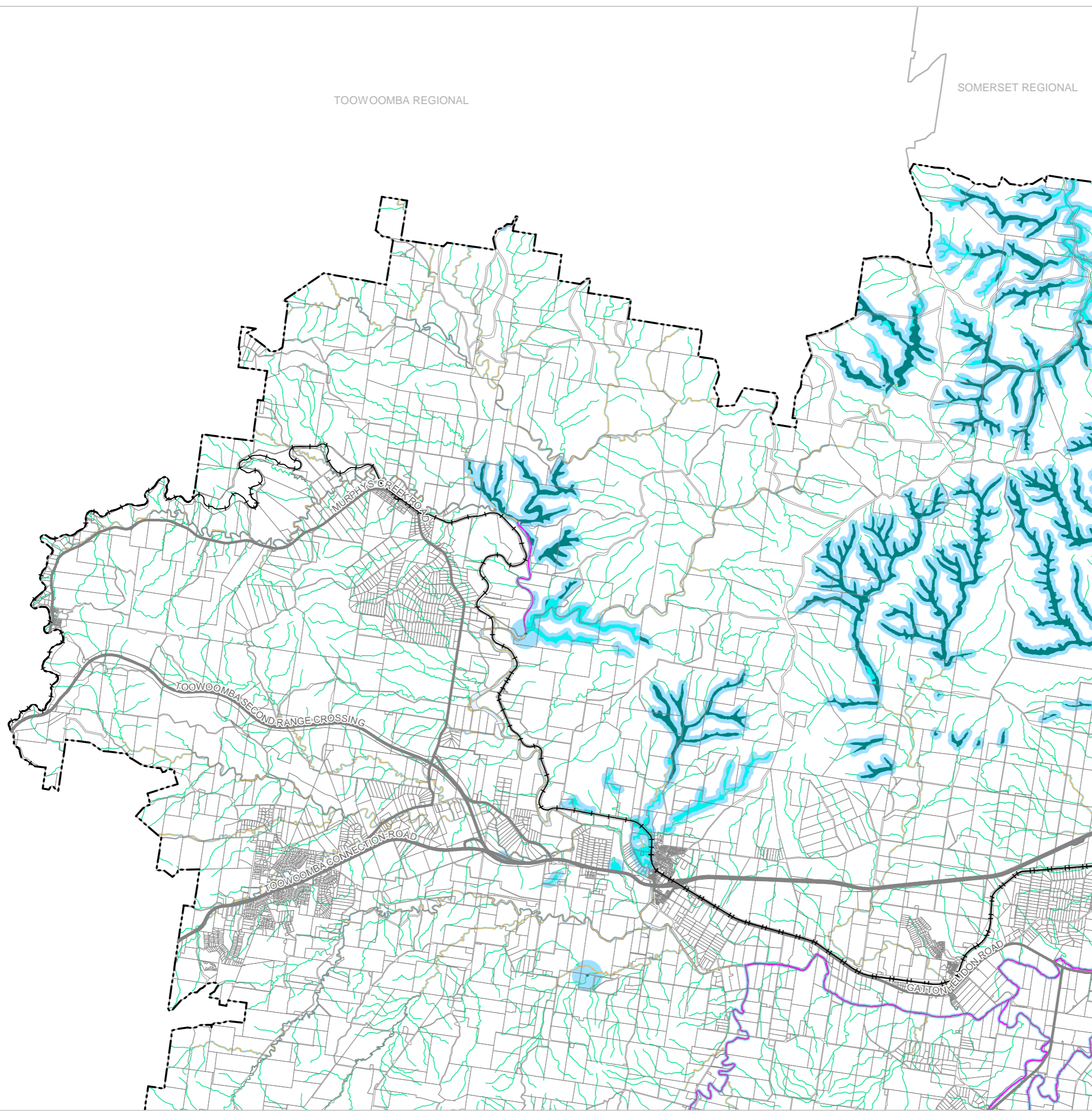
Major Road

Railway Network

Property Boundary

Local Government Boundary

Watercourse or Waterbody



NOTE

Refer to online or electronic mapping where layers overlap or labels obstruct the data on the map.

MAP INFORMATION

Based on or contains data sourced from the State Government which gives no warranty in relation to the data (including accuracy, reliability, completeness or suitability) and accepts no liability (including without limitation, liability in negligence) for any loss, damage or costs (including consequential damage) relating to any use of the data.

© Copyright Lockyer Valley Regional Council 2024

DATA SOURCES

Cadastral data weekly - whole of State Queensland, Rail network - Queensland, Queensland roads and tracks, State controlled roads surveyed centreline - Queensland: © State of Queensland (Department of Resources) 2023. MSES - High ecological significance wetlands, MSES - High ecological value waters - wetlands: © State of Queensland (Department of Environment and Science) 2023

Geocentric Datum of Australia (GDA2020 / MGA zone 56)

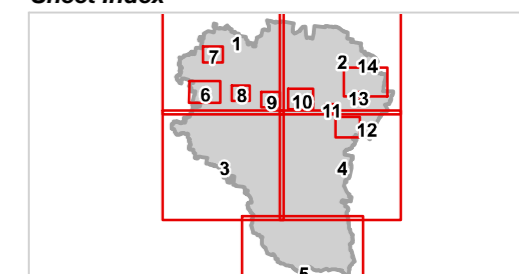


Commencement Date: 22 July 2024

Approx Scale @ A3: 1:100,000



Sheet Index





REGIONAL COUNCIL

SOMERSET REGIONAL

### OM3C Biodiversity - Waterway and Wetland Habitat overlay map

**Matters of State Environmental Significance**

Wetlands

**Matters of Local Environmental Significance**

Wetlands

**Separation Areas**

Waterway and Wetland Separation Area

**Waterways**

Stream order 1 and 2

Stream order 3 and 4

Stream order 5 and greater

**Other Features**

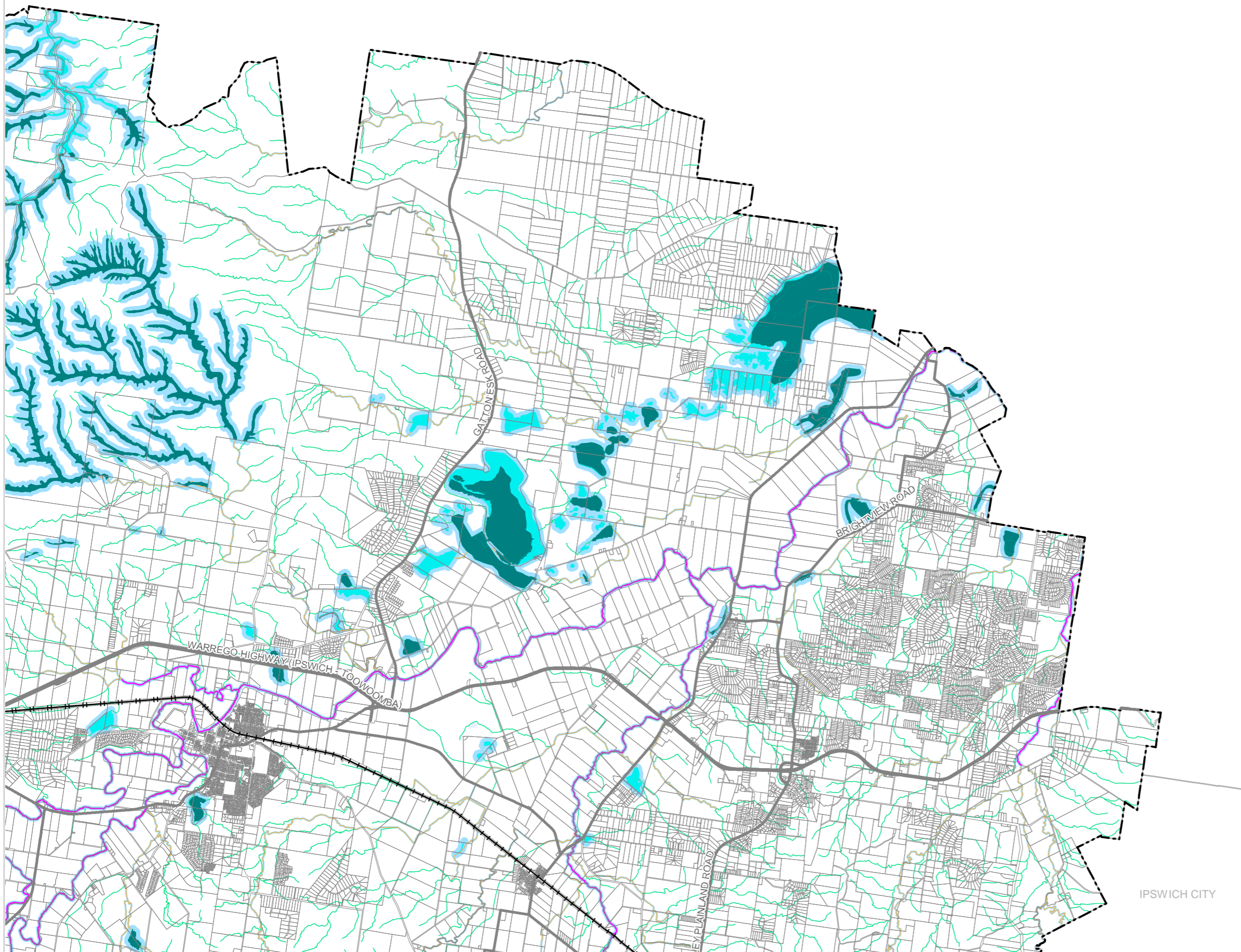
Major Road

Railway Network

Property Boundary

Local Government Boundary

Watercourse or Waterbody



**NOTE**

Refer to online or electronic mapping where layers overlap or labels obstruct the data on the map.

**MAP INFORMATION**

Based on or contains data sourced from the State Government which gives no warranty in relation to the data (including accuracy, reliability, completeness or suitability) and accepts no liability (including without limitation, liability in negligence) for any loss, damage or costs (including consequential damage) relating to any use of the data.  
© Copyright Lockyer Valley Regional Council 2024

**DATA SOURCES**

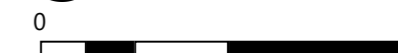
Cadastral data weekly - whole of State Queensland, Rail network - Queensland, Queensland roads and tracks, State controlled roads surveyed centreline - Queensland: © State of Queensland (Department of Resources) 2023. MSES - High ecological significance wetlands, MSES - High ecological value waters - wetlands: © State of Queensland (Department of Environment and Science) 2023

Geocentric Datum of Australia (GDA2020 / MGA zone 56)

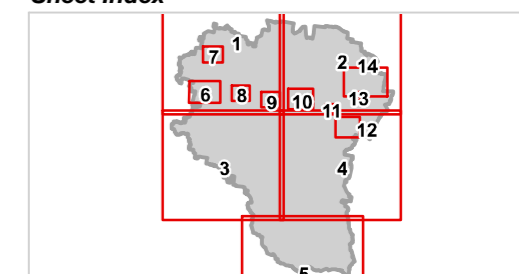


Commencement Date: 22 July 2024

Approx Scale @ A3: 1:100,000



**Sheet Index**



IPSWICH CITY



REGIONAL COUNCIL

OM3C Biodiversity - Waterway and Wetland Habitat overlay map

Matters of State Environmental Significance

Wetlands

Matters of Local Environmental Significance

Wetlands

Separation Areas

Waterway and Wetland Separation Area

Waterways

Stream order 1 and 2

Stream order 3 and 4

Stream order 5 and greater

Other Features

Major Road

Railway Network

Property Boundary

Local Government Boundary

Watercourse or Waterbody

NOTE

Refer to online or electronic mapping where layers overlap or labels obstruct the data on the map.

MAP INFORMATION

Based on or contains data sourced from the State Government which gives no warranty in relation to the data (including accuracy, reliability, completeness or suitability) and accepts no liability (including without limitation, liability in negligence) for any loss, damage or costs (including consequential damage) relating to any use of the data.

© Copyright Lockyer Valley Regional Council 2024

DATA SOURCES

Cadastral data weekly - whole of State Queensland, Rail network - Queensland, Queensland roads and tracks, State controlled roads surveyed centreline - Queensland: © State of Queensland (Department of Resources) 2023. MSES - High ecological significance wetlands, MSES - High ecological value waters - wetlands: © State of Queensland (Department of Environment and Science) 2023

Geocentric Datum of Australia (GDA2020 / MGA zone 56)



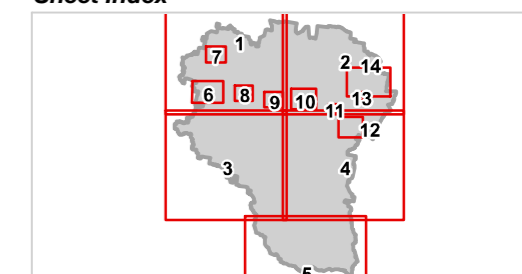
Commencement Date: 22 July 2024

Approx Scale @ A3: 1:100,000

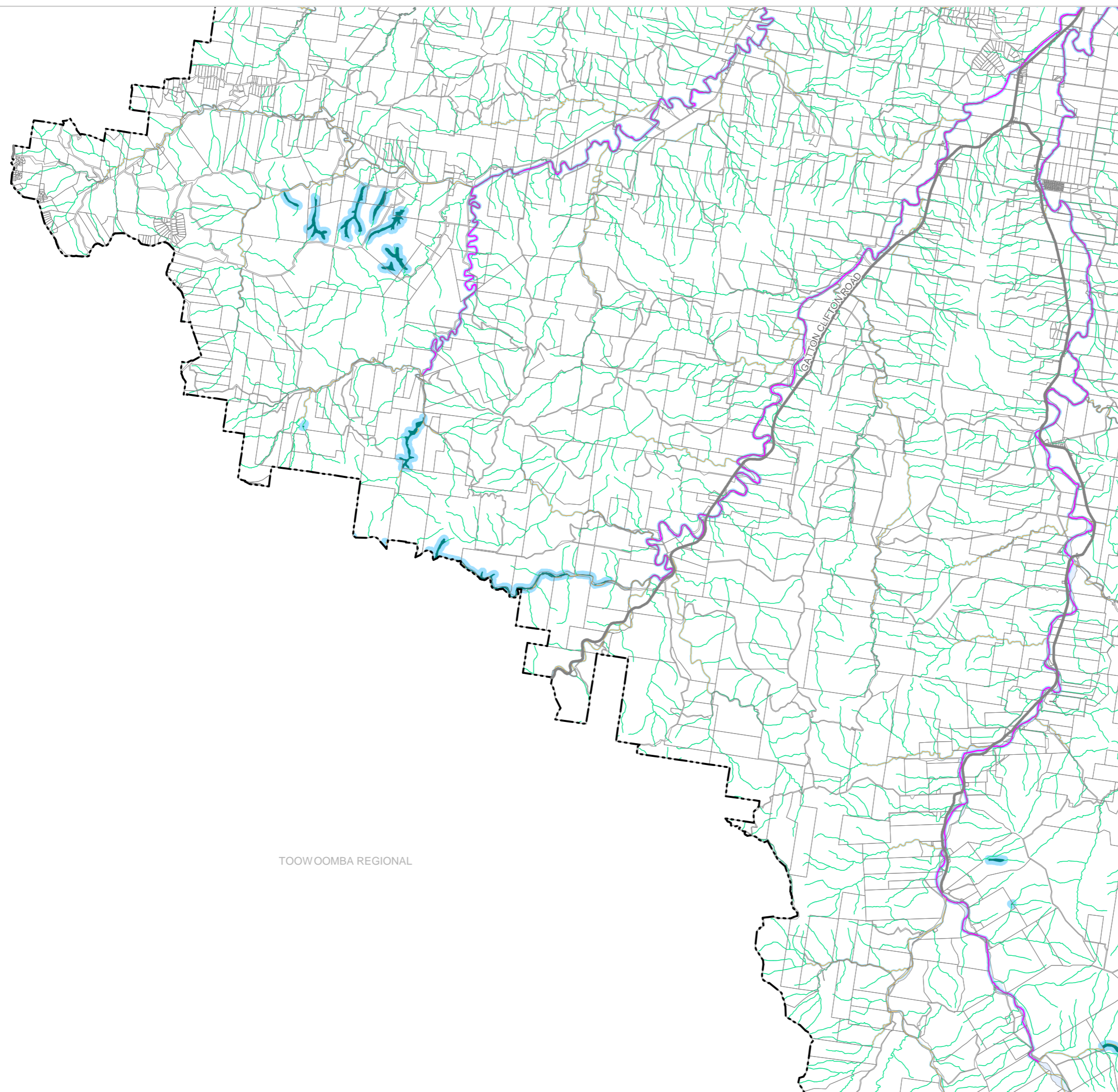
0 5

kilometres

Sheet Index



OM3C Biodiversity - Wetlands overlay LGA south-west-03



TOOWOOMBA REGIONAL



# Lockyer Valley Regional Council Planning Scheme

REGIONAL COUNCIL

## OM3C Biodiversity - Waterway and Wetland Habitat overlay map

### Matters of State Environmental Significance

Wetlands

### Matters of Local Environmental Significance

Wetlands

### Separation Areas

Waterway and Wetland Separation Area

### Waterways

Stream order 1 and 2

Stream order 3 and 4

Stream order 5 and greater

### Other Features

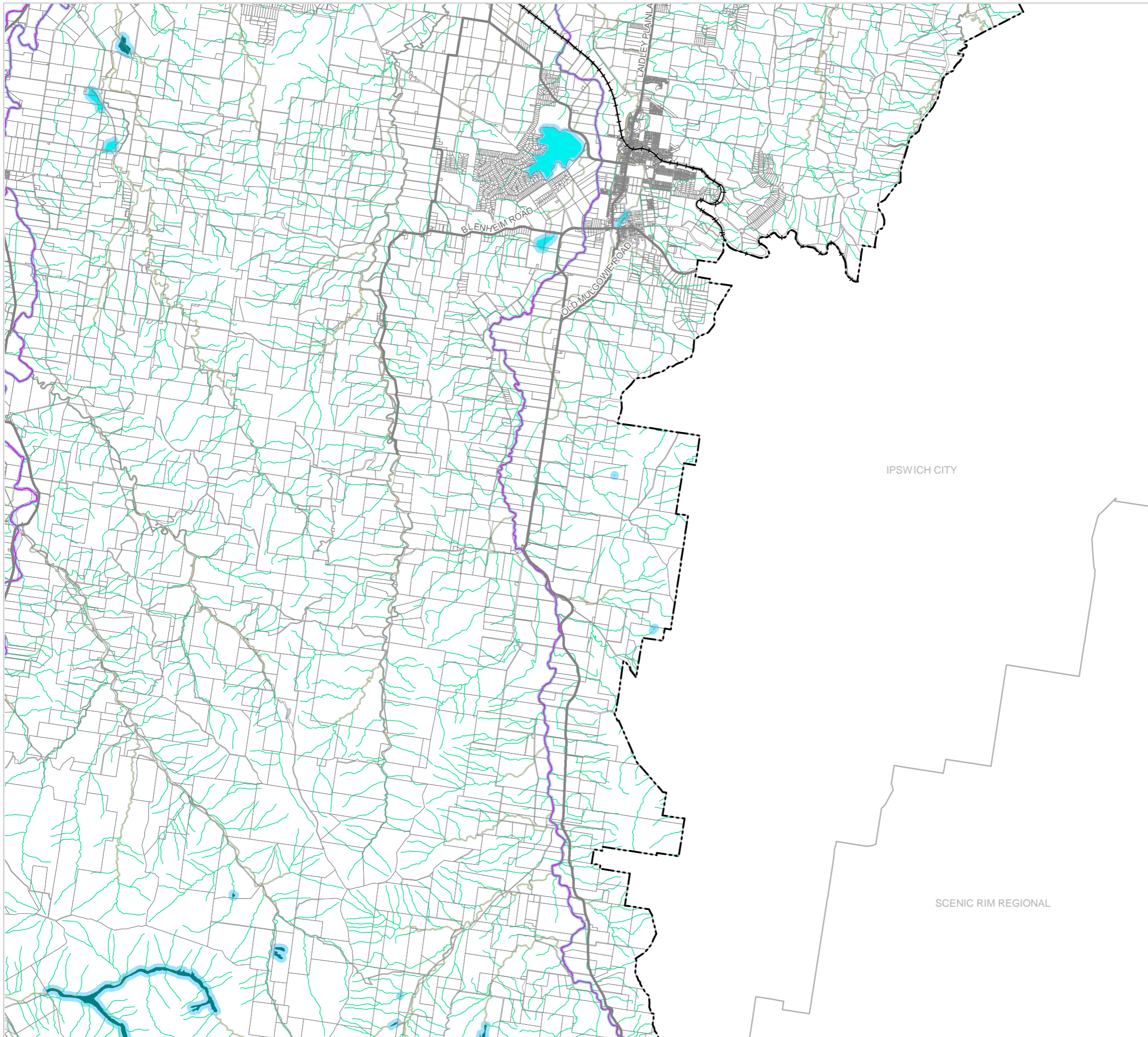
Major Road

Railway Network

Property Boundary

Local Government Boundary

Watercourse or Waterbody



IPSWICH CITY

SCENIC RIM REGIONAL

### NOTE

Refer to online or electronic mapping where layers overlap or labels obstruct the data on the map.

### MAP INFORMATION

Based on or contains data sourced from the State Government which gives no warranty in relation to the data (including accuracy, reliability, completeness or suitability) and accepts no liability (including without limitation, liability in negligence) for any loss, damage or costs (including consequential damage) relating to any use of the data.

© Copyright Lockyer Valley Regional Council 2024

### DATA SOURCES

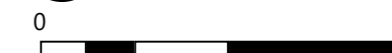
Cadastral data weekly - whole of State Queensland, Rail network - Queensland, Queensland roads and tracks, State controlled roads surveyed centreline - Queensland: © State of Queensland (Department of Resources) 2023. MSES - High ecological significance wetlands, MSES - High ecological value waters - wetlands: © State of Queensland (Department of Environment and Science) 2023

Geocentric Datum of Australia (GDA2020 / MGA zone 56)

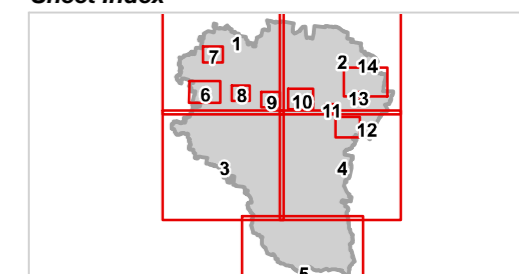


Commencement Date: 22 July 2024

Approx Scale @ A3: 1:100,000



### Sheet Index



OM3C Biodiversity - Wetlands overlay  
LGA south-east-04



# Lockyer Valley Regional Council Planning Scheme

REGIONAL COUNCIL

## OM3C Biodiversity - Waterway and Wetland Habitat overlay map

### Matters of State Environmental Significance

Wetlands

### Matters of Local Environmental Significance

Wetlands

### Separation Areas

Waterway and Wetland Separation Area

### Waterways

Stream order 1 and 2

Stream order 3 and 4

Stream order 5 and greater

### Other Features

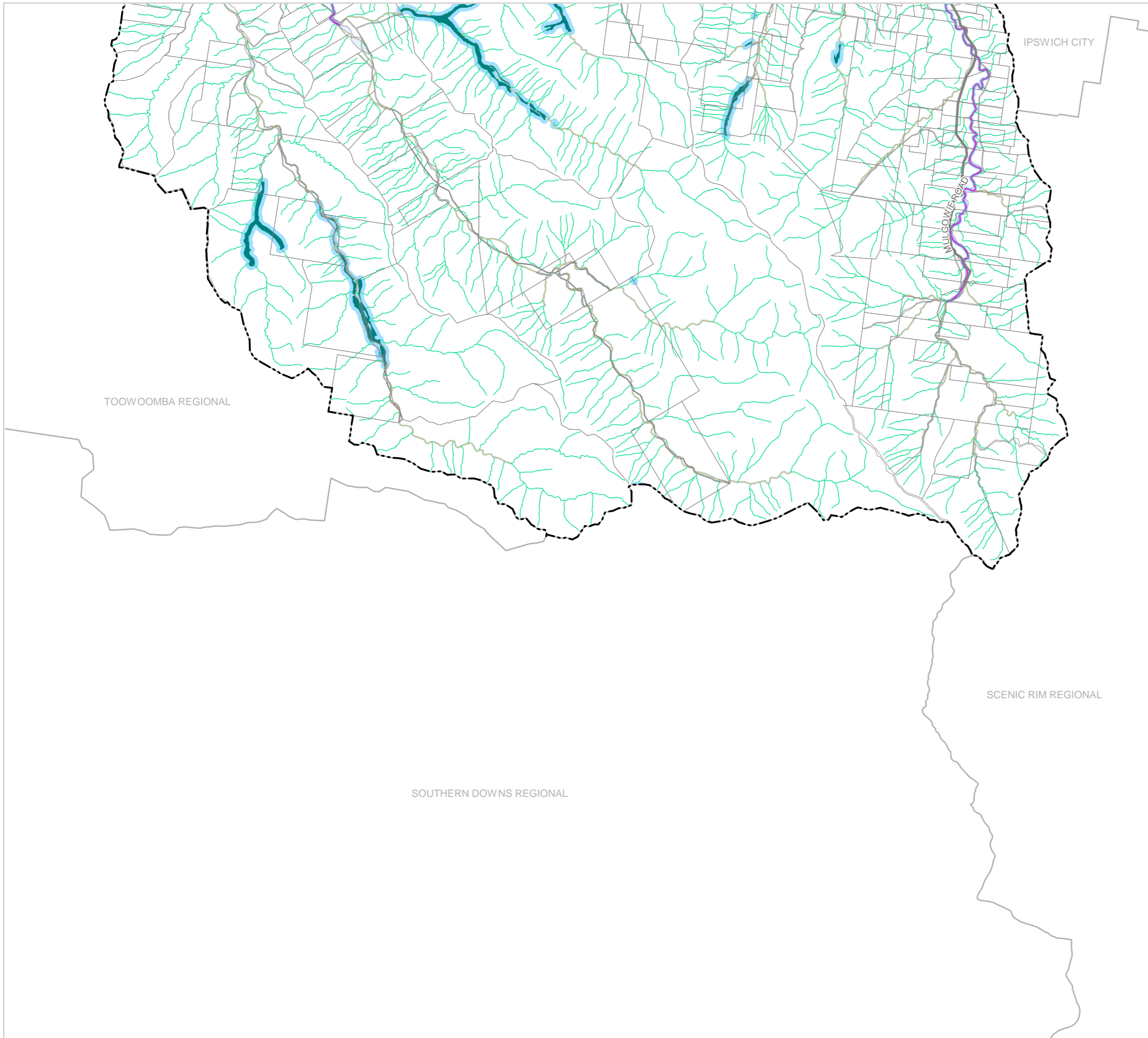
Major Road

Railway Network

Property Boundary

Local Government Boundary

Watercourse or Waterbody



### NOTE

Refer to online or electronic mapping where layers overlap or labels obstruct the data on the map.

### MAP INFORMATION

Based on or contains data sourced from the State Government which gives no warranty in relation to the data (including accuracy, reliability, completeness or suitability) and accepts no liability (including without limitation, liability in negligence) for any loss, damage or costs (including consequential damage) relating to any use of the data.  
© Copyright Lockyer Valley Regional Council 2024

### DATA SOURCES

Cadastral data weekly - whole of State Queensland, Rail network - Queensland, Queensland roads and tracks, State controlled roads surveyed centreline - Queensland: © State of Queensland (Department of Resources) 2023. MSES - High ecological significance wetlands, MSES - High ecological value waters - wetlands: © State of Queensland (Department of Environment and Science) 2023

Geocentric Datum of Australia (GDA2020 / MGA zone 56)

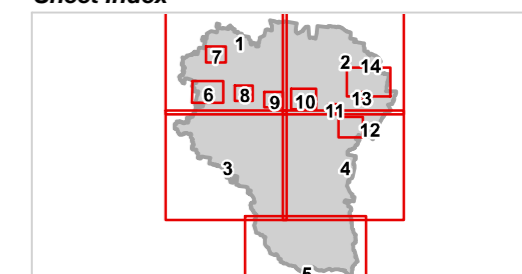


Commencement Date: 22 July 2024

Approx Scale @ A3: 1:100,000



### Sheet Index



OM3C Biodiversity - Wetlands overlay  
LGA south-05



# Lockyer Valley Regional Council Planning Scheme

REGIONAL COUNCIL

## OM3C Biodiversity - Waterway and Wetland Habitat overlay map

### Matters of State Environmental Significance

Wetlands

### Matters of Local Environmental Significance

Wetlands

### Separation Areas

Waterway and Wetland Separation Area

### Waterways

Stream order 1 and 2

Stream order 3 and 4

Stream order 5 and greater

### Other Features

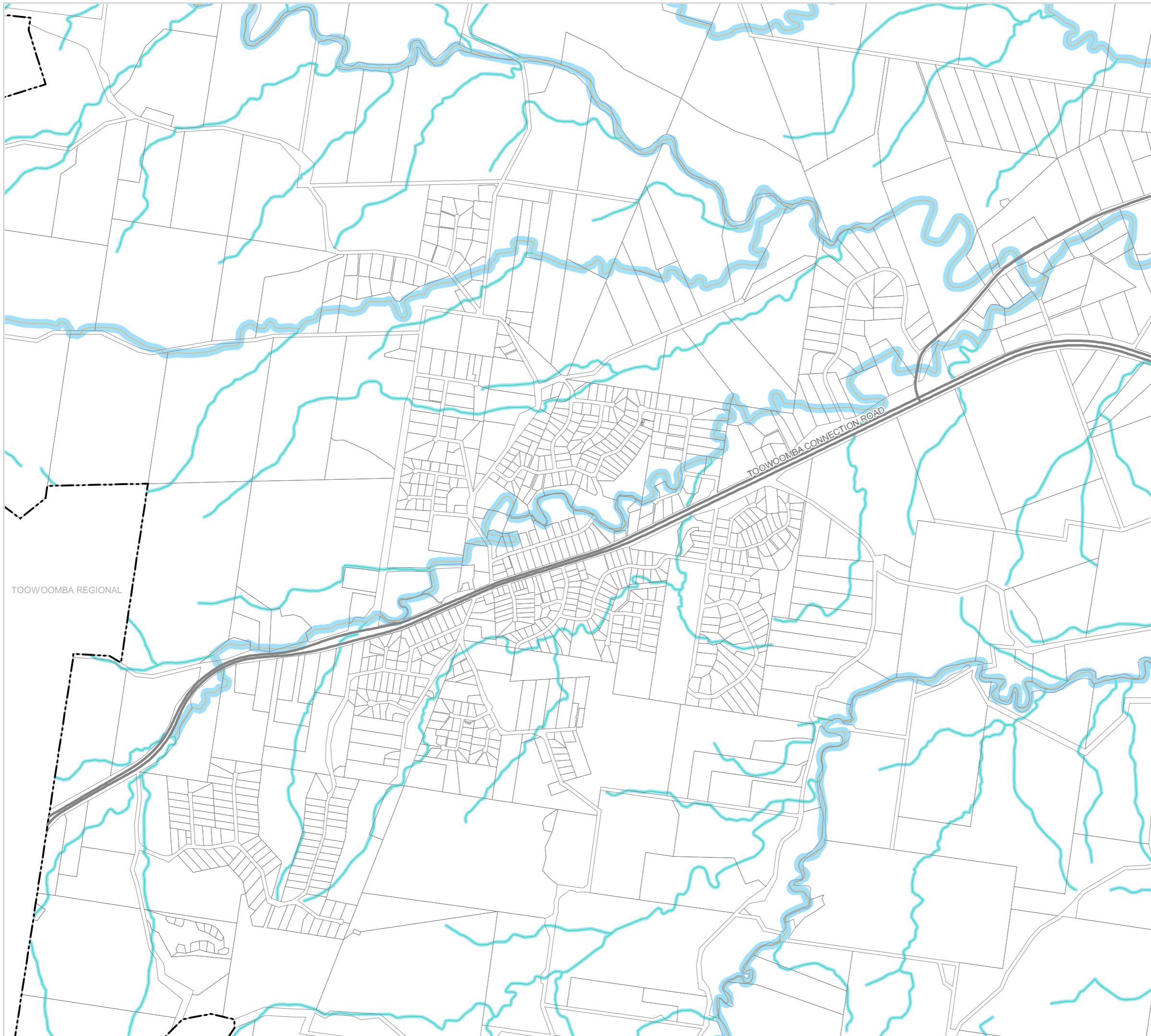
Major Road

Railway Network

Property Boundary

Local Government Boundary

Watercourse or Waterbody



TOOWOOMBA REGIONAL

### NOTE

Refer to online or electronic mapping where layers overlap or labels obstruct the data on the map.

### MAP INFORMATION

Based on or contains data sourced from the State Government which gives no warranty in relation to the data (including accuracy, reliability, completeness or suitability) and accepts no liability (including without limitation, liability in negligence) for any loss, damage or costs (including consequential damage) relating to any use of the data.  
© Copyright Lockyer Valley Regional Council 2024

### DATA SOURCES

Cadastral data weekly - whole of State Queensland, Rail network - Queensland, Queensland roads and tracks, State controlled roads surveyed centreline - Queensland: © State of Queensland (Department of Resources) 2023. MSES - High ecological significance wetlands, MSES - High ecological value waters - wetlands: © State of Queensland (Department of Environment and Science) 2023

Geocentric Datum of Australia (GDA2020 / MGA zone 56)



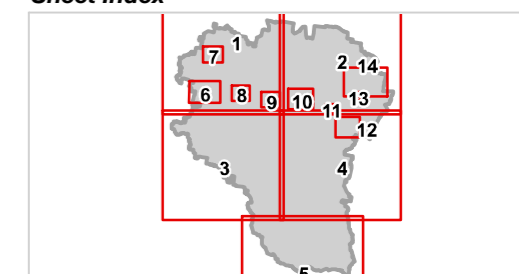
Commencement Date: 22 July 2024

Approx Scale @ A3: 1:20,000



kilometres

### Sheet Index



OM3C Biodiversity - Wetlands overlay  
Withcott-06



REGIONAL COUNCIL

OM3C Biodiversity - Waterway and Wetland Habitat overlay map

Matters of State Environmental Significance

Wetlands

Matters of Local Environmental Significance

Wetlands

Separation Areas

Waterway and Wetland Separation Area

Waterways

Stream order 1 and 2

Stream order 3 and 4

Stream order 5 and greater

Other Features

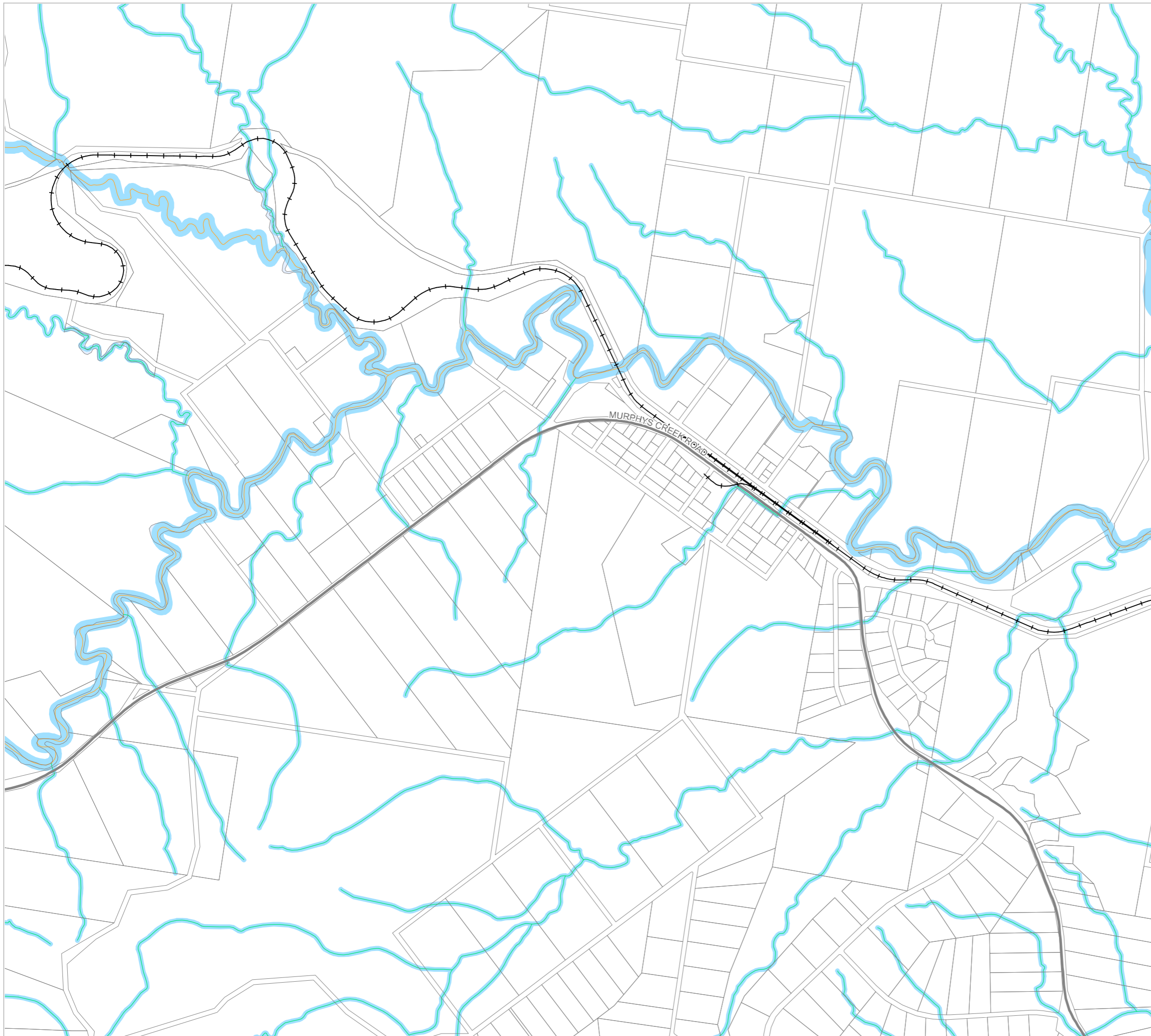
Major Road

Railway Network

Property Boundary

Local Government Boundary

Watercourse or Waterbody



NOTE

Refer to online or electronic mapping where layers overlap or labels obstruct the data on the map.

MAP INFORMATION

Based on or contains data sourced from the State Government which gives no warranty in relation to the data (including accuracy, reliability, completeness or suitability) and accepts no liability (including without limitation, liability in negligence) for any loss, damage or costs (including consequential damage) relating to any use of the data.

© Copyright Lockyer Valley Regional Council 2024

DATA SOURCES

Cadastral data weekly - whole of State Queensland, Rail network - Queensland, Queensland roads and tracks, State controlled roads surveyed centreline - Queensland: © State of Queensland (Department of Resources) 2023. MSES - High ecological significance wetlands, MSES - High ecological value waters - wetlands: © State of Queensland (Department of Environment and Science) 2023

Geocentric Datum of Australia (GDA2020 / MGA zone 56)



Commencement Date: 22 July 2024

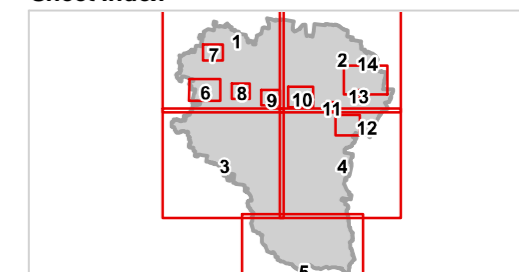
Approx Scale @ A3: 1:15,000

0 0.5



kilometres

Sheet Index







# Lockyer Valley Regional Council Planning Scheme

REGIONAL COUNCIL

## OM3C Biodiversity - Waterway and Wetland Habitat overlay map

### Matters of State Environmental Significance

Wetlands

### Matters of Local Environmental Significance

Wetlands

### Separation Areas

Waterway and Wetland Separation Area

### Waterways

Stream order 1 and 2

Stream order 3 and 4

Stream order 5 and greater

### Other Features

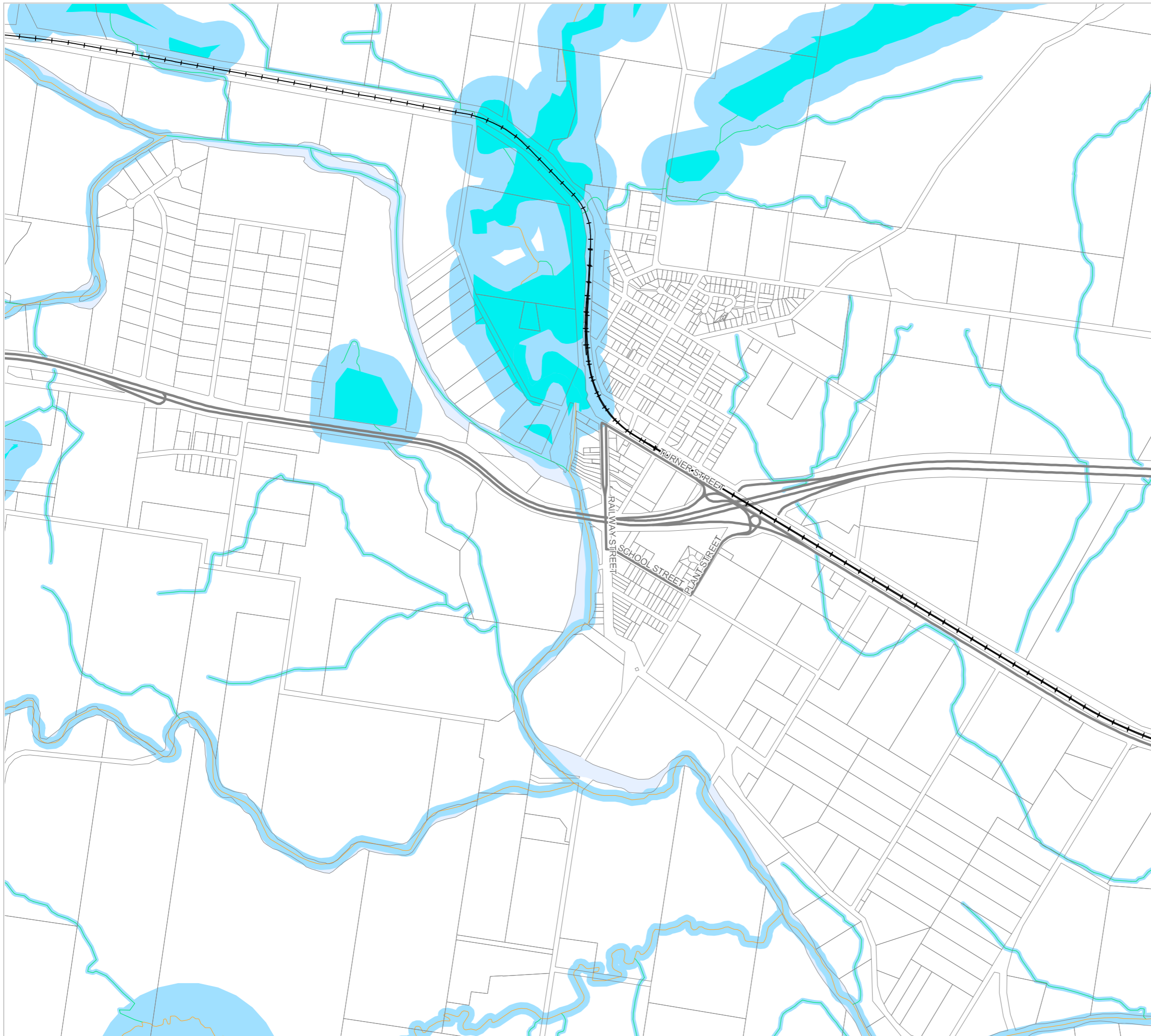
Major Road

Railway Network

Property Boundary

Local Government Boundary

Watercourse or Waterbody



### NOTE

Refer to online or electronic mapping where layers overlap or labels obstruct the data on the map.

### MAP INFORMATION

Based on or contains data sourced from the State Government which gives no warranty in relation to the data (including accuracy, reliability, completeness or suitability) and accepts no liability (including without limitation, liability in negligence) for any loss, damage or costs (including consequential damage) relating to any use of the data.

© Copyright Lockyer Valley Regional Council 2024

### DATA SOURCES

Cadastral data weekly - whole of State Queensland, Rail network - Queensland, Queensland roads and tracks, State controlled roads surveyed centreline - Queensland: © State of Queensland (Department of Resources) 2023. MSES - High ecological significance wetlands, MSES - High ecological value waters - wetlands: © State of Queensland (Department of Environment and Science) 2023

Geocentric Datum of Australia (GDA2020 / MGA zone 56)

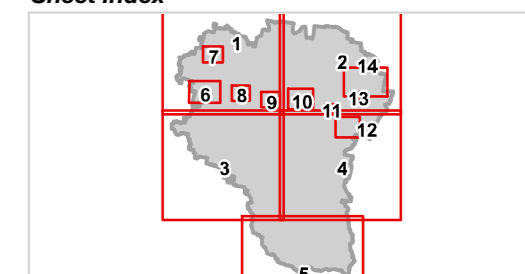
Commencement Date: 22 July 2024

Approx Scale @ A3: 1:15,000

0 0.5

kilometres

### Sheet Index



OM3C Biodiversity - Wetlands overlay Helidon-08



# Lockyer Valley Regional Council Planning Scheme

REGIONAL COUNCIL

## OM3C Biodiversity - Waterway and Wetland Habitat overlay map

### Matters of State Environmental Significance

Wetlands

### Matters of Local Environmental Significance

Wetlands

### Separation Areas

Waterway and Wetland Separation Area

### Waterways

Stream order 1 and 2

Stream order 3 and 4

Stream order 5 and greater

### Other Features

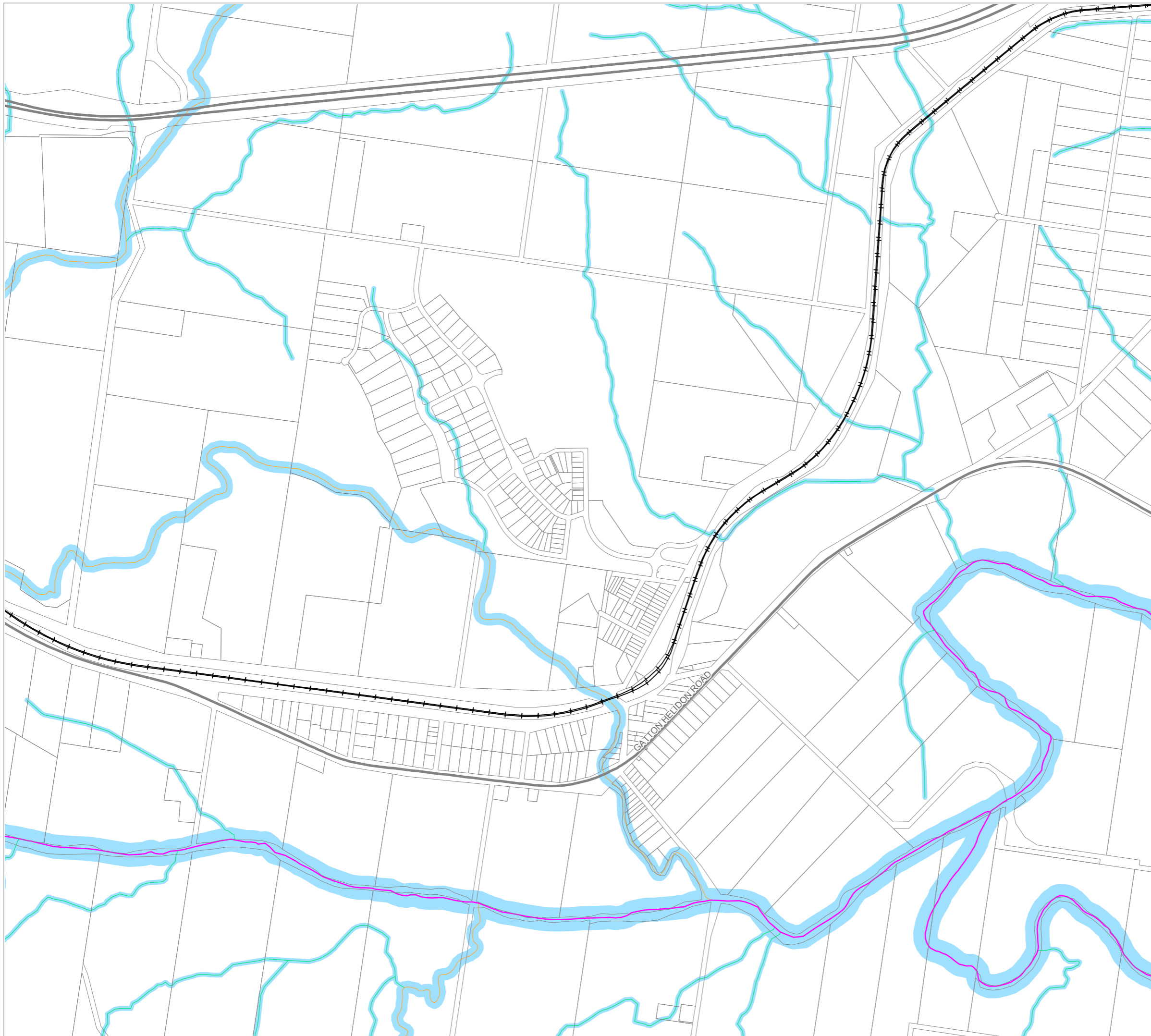
Major Road

Railway Network

Property Boundary

Local Government Boundary

Watercourse or Waterbody



### NOTE

Refer to online or electronic mapping where layers overlap or labels obstruct the data on the map.

### MAP INFORMATION

Based on or contains data sourced from the State Government which gives no warranty in relation to the data (including accuracy, reliability, completeness or suitability) and accepts no liability (including without limitation, liability in negligence) for any loss, damage or costs (including consequential damage) relating to any use of the data.

© Copyright Lockyer Valley Regional Council 2024

### DATA SOURCES

Cadastral data weekly - whole of State Queensland, Rail network - Queensland, Queensland roads and tracks, State controlled roads surveyed centreline - Queensland: © State of Queensland (Department of Resources) 2023. MSES - High ecological significance wetlands, MSES - High ecological value waters - wetlands: © State of Queensland (Department of Environment and Science) 2023

Geocentric Datum of Australia (GDA2020 / MGA zone 56)



Commencement Date: 22 July 2024

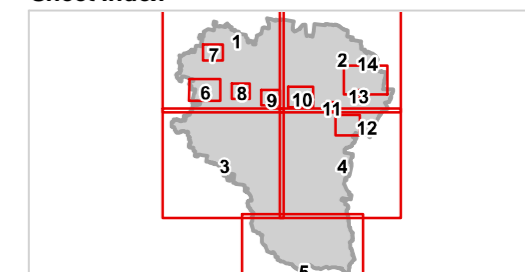
Approx Scale @ A3: 1:15,000

0 0.5



kilometres

### Sheet Index



OM3C Biodiversity - Wetlands overlay Grantham-09



# Lockyer Valley Regional Council Planning Scheme

REGIONAL COUNCIL

## OM3C Biodiversity - Waterway and Wetland Habitat overlay map

### Matters of State Environmental Significance

Wetlands

### Matters of Local Environmental Significance

Wetlands

### Separation Areas

Waterway and Wetland Separation Area

### Waterways

Stream order 1 and 2

Stream order 3 and 4

Stream order 5 and greater

### Other Features

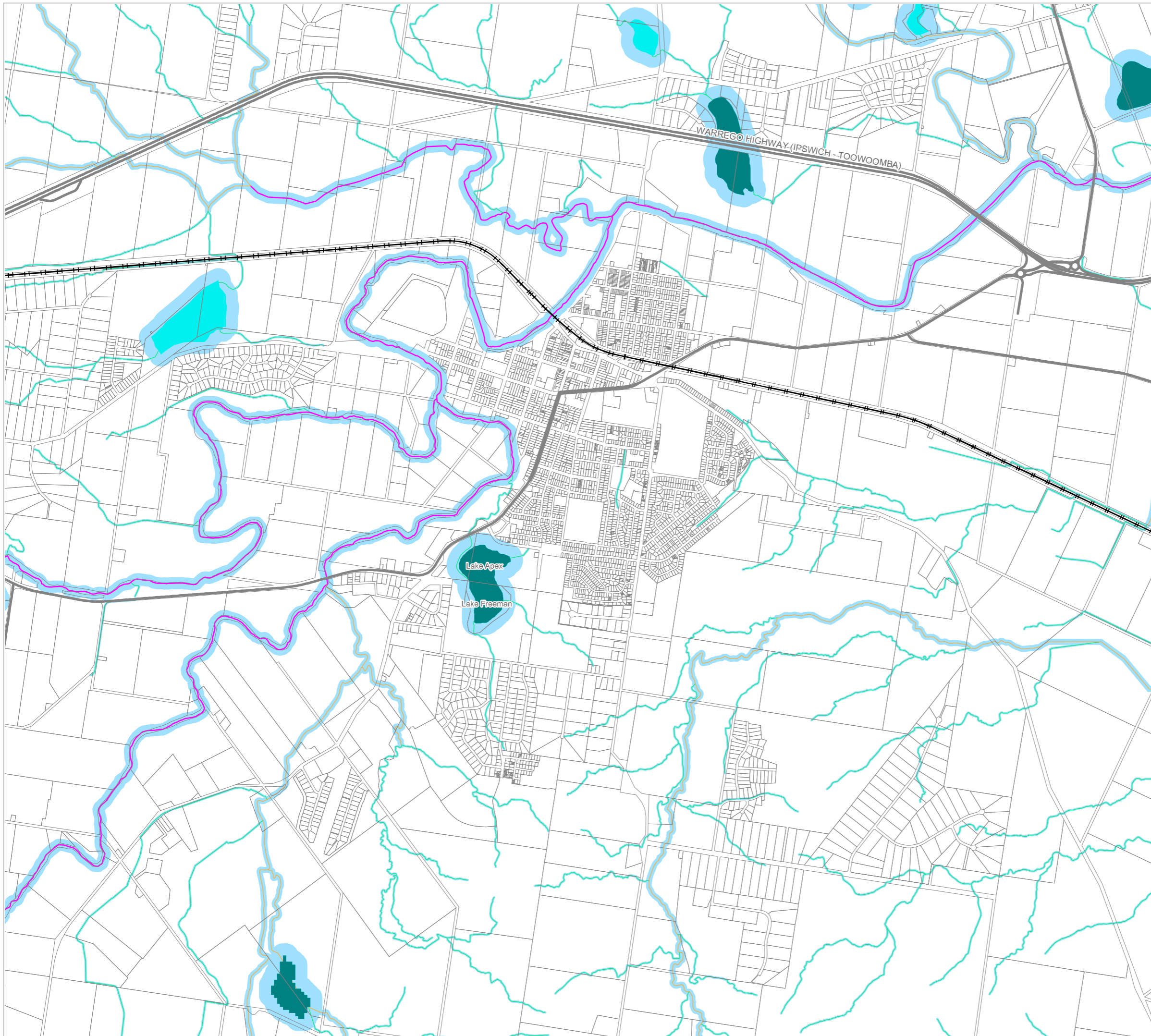
Major Road

Railway Network

Property Boundary

Local Government Boundary

Watercourse or Waterbody



### NOTE

Refer to online or electronic mapping where layers overlap or labels obstruct the data on the map.

### MAP INFORMATION

Based on or contains data sourced from the State Government which gives no warranty in relation to the data (including accuracy, reliability, completeness or suitability) and accepts no liability (including without limitation, liability in negligence) for any loss, damage or costs (including consequential damage) relating to any use of the data.

© Copyright Lockyer Valley Regional Council 2024

### DATA SOURCES

Cadastral data weekly - whole of State Queensland, Rail network - Queensland, Queensland roads and tracks, State controlled roads surveyed centreline - Queensland: © State of Queensland (Department of Resources) 2023. MSES - High ecological significance wetlands, MSES - High ecological value waters - wetlands: © State of Queensland (Department of Environment and Science) 2023

Geocentric Datum of Australia (GDA2020 / MGA zone 56)



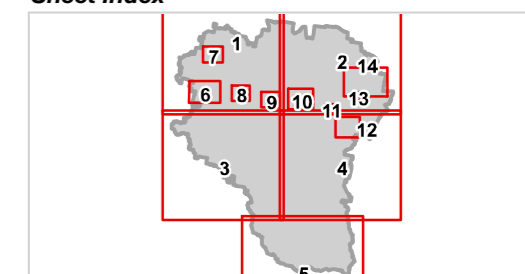
Commencement Date: 22 July 2024

Approx Scale @ A3: 1:30,000



kilometres

### Sheet Index



OM3C Biodiversity - Wetlands overlay  
Gatton-10



# Lockyer Valley Regional Council Planning Scheme

REGIONAL COUNCIL

## OM3C Biodiversity - Waterway and Wetland Habitat overlay map

### Matters of State Environmental Significance

Wetlands

### Matters of Local Environmental Significance

Wetlands

### Separation Areas

Waterway and Wetland Separation Area

### Waterways

Stream order 1 and 2

Stream order 3 and 4

Stream order 5 and greater

### Other Features

Major Road

Railway Network

Property Boundary

Local Government Boundary

Watercourse or Waterbody



### NOTE

Refer to online or electronic mapping where layers overlap or labels obstruct the data on the map.

### MAP INFORMATION

Based on or contains data sourced from the State Government which gives no warranty in relation to the data (including accuracy, reliability, completeness or suitability) and accepts no liability (including without limitation, liability in negligence) for any loss, damage or costs (including consequential damage) relating to any use of the data.

© Copyright Lockyer Valley Regional Council 2024

### DATA SOURCES

Cadastral data weekly - whole of State Queensland, Rail network - Queensland, Queensland roads and tracks, State controlled roads surveyed centreline - Queensland: © State of Queensland (Department of Resources) 2023. MSES - High ecological significance wetlands, MSES - High ecological value waters - wetlands: © State of Queensland (Department of Environment and Science) 2023

Geocentric Datum of Australia (GDA2020 / MGA zone 56)



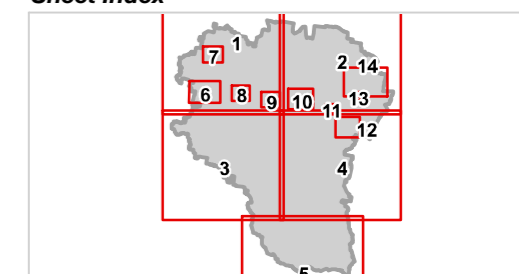
Commencement Date: 22 July 2024

Approx Scale @ A3: 1:7,500

0 0.5

kilometres

### Sheet Index



OM3C Biodiversity - Wetlands overlay  
Forest Hill-11



# Lockyer Valley Regional Council Planning Scheme

REGIONAL COUNCIL

## OM3C Biodiversity - Waterway and Wetland Habitat overlay map

### Matters of State Environmental Significance

Wetlands

### Matters of Local Environmental Significance

Wetlands

### Separation Areas

Waterway and Wetland Separation Area

### Waterways

Stream order 1 and 2

Stream order 3 and 4

Stream order 5 and greater

### Other Features

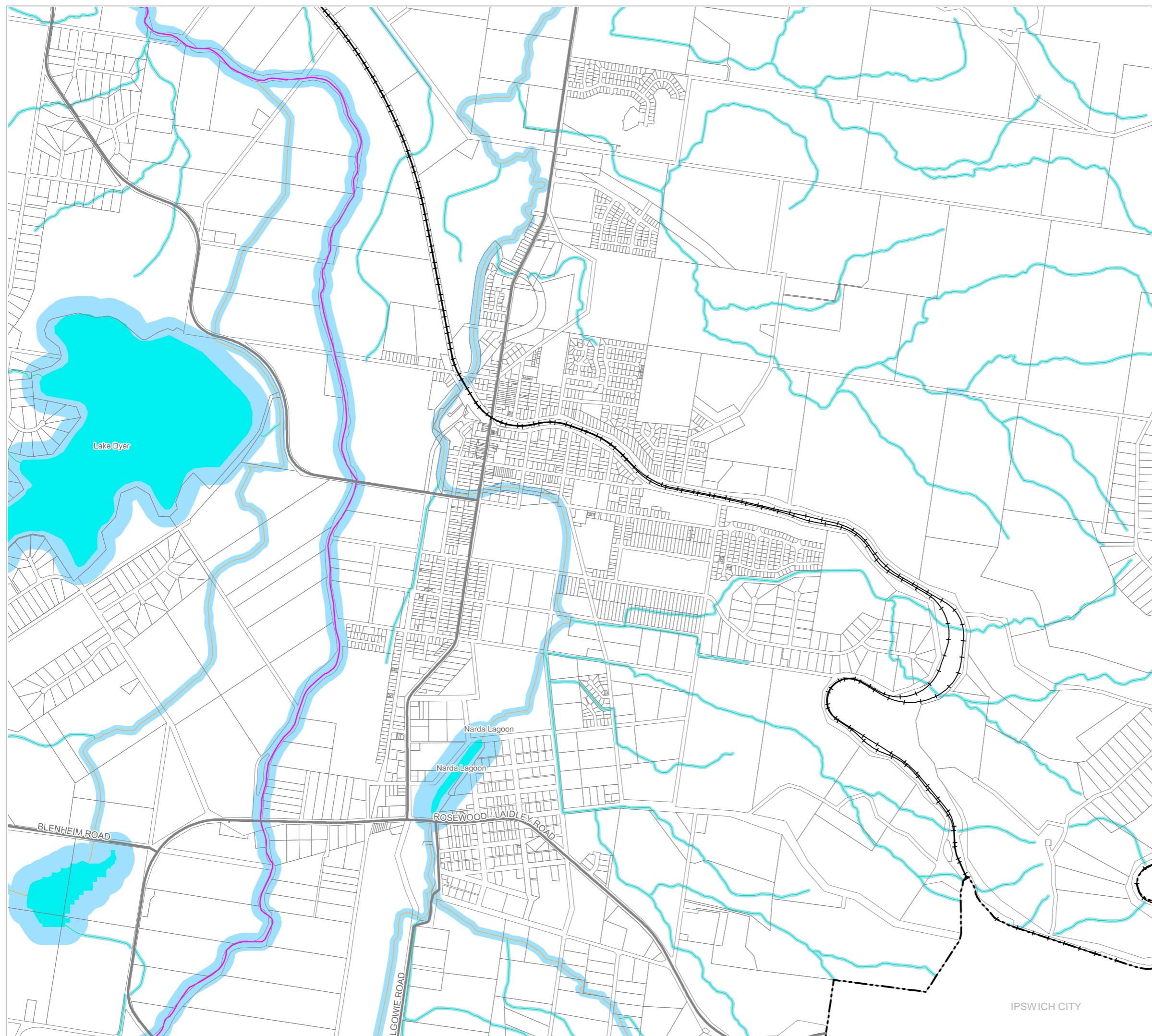
Major Road

Railway Network

Property Boundary

Local Government Boundary

Watercourse or Waterbody



### NOTE

Refer to online or electronic mapping where layers overlap or labels obstruct the data on the map.

### MAP INFORMATION

Based on or contains data sourced from the State Government which gives no warranty in relation to the data (including accuracy, reliability, completeness or suitability) and accepts no liability (including without limitation, liability in negligence) for any loss, damage or costs (including consequential damage) relating to any use of the data.

© Copyright Lockyer Valley Regional Council 2024

### DATA SOURCES

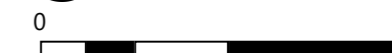
Cadastral data weekly - whole of State Queensland, Rail network - Queensland, Queensland roads and tracks, State controlled roads surveyed centreline - Queensland: © State of Queensland (Department of Resources) 2023. MSES - High ecological significance wetlands, MSES - High ecological value waters - wetlands: © State of Queensland (Department of Environment and Science) 2023

Geocentric Datum of Australia (GDA2020 / MGA zone 56)



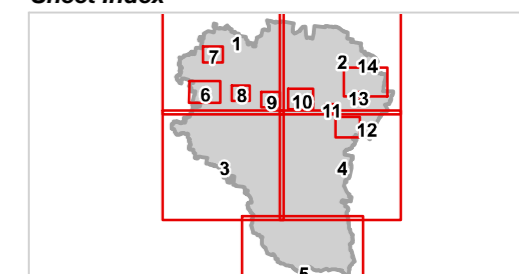
Commencement Date: 22 July 2024

Approx Scale @ A3: 1:20,000



kilometres

### Sheet Index



OM3C Biodiversity - Wetlands overlay Laidley-12

IPSWICH CITY



REGIONAL COUNCIL

OM3C Biodiversity - Waterway and Wetland Habitat overlay map

Matters of State Environmental Significance

Wetlands

Matters of Local Environmental Significance

Wetlands

Separation Areas

Waterway and Wetland Separation Area

Waterways

Stream order 1 and 2

Stream order 3 and 4

Stream order 5 and greater

Other Features

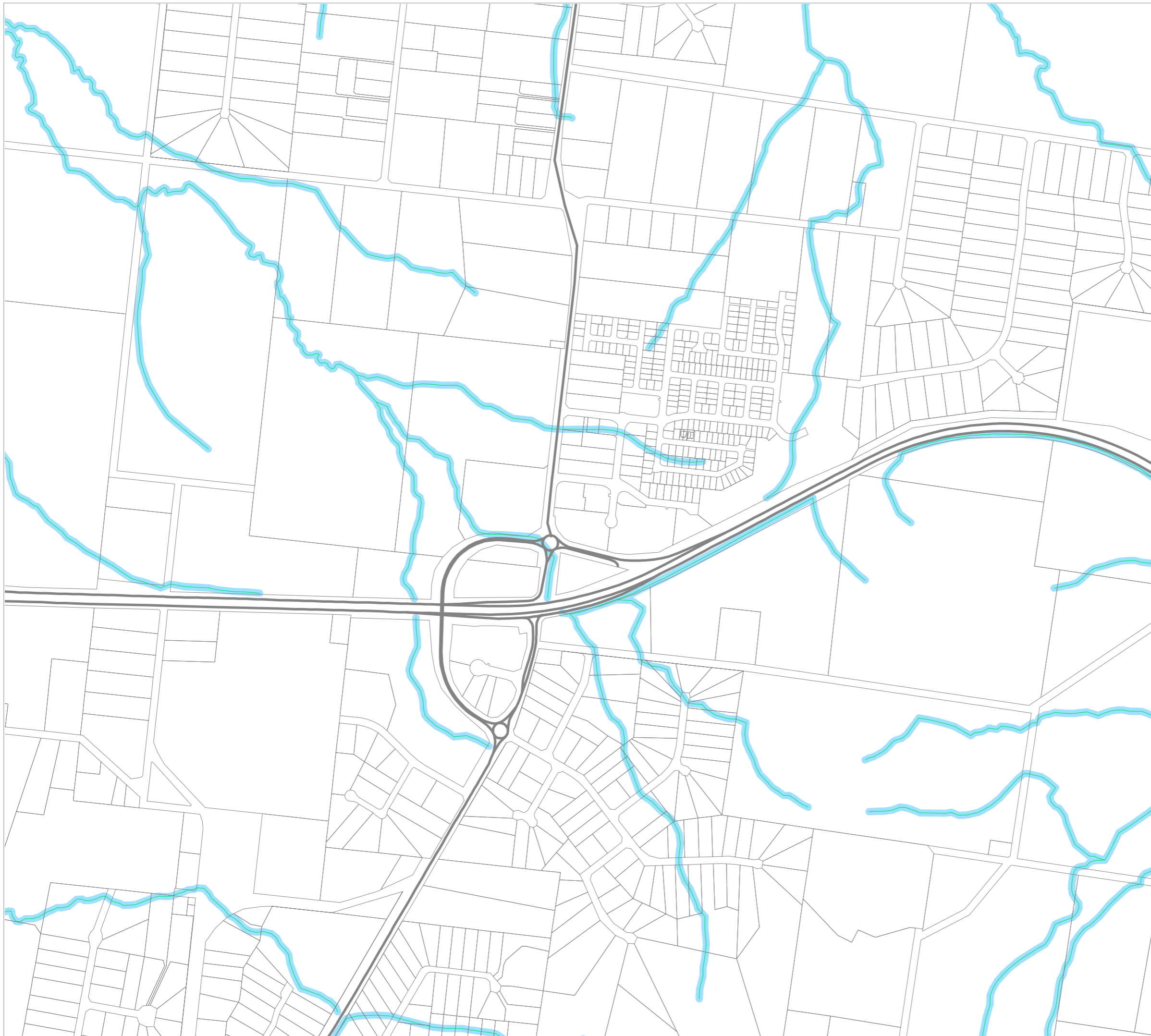
Major Road

Railway Network

Property Boundary

Local Government Boundary

Watercourse or Waterbody



NOTE

Refer to online or electronic mapping where layers overlap or labels obstruct the data on the map.

MAP INFORMATION

Based on or contains data sourced from the State Government which gives no warranty in relation to the data (including accuracy, reliability, completeness or suitability) and accepts no liability (including without limitation, liability in negligence) for any loss, damage or costs (including consequential damage) relating to any use of the data.

© Copyright Lockyer Valley Regional Council 2024

DATA SOURCES

Cadastral data weekly - whole of State Queensland, Rail network - Queensland, Queensland roads and tracks, State controlled roads surveyed centreline - Queensland: © State of Queensland (Department of Resources) 2023. MSES - High ecological significance wetlands, MSES - High ecological value waters - wetlands: © State of Queensland (Department of Environment and Science) 2023

Geocentric Datum of Australia (GDA2020 / MGA zone 56)



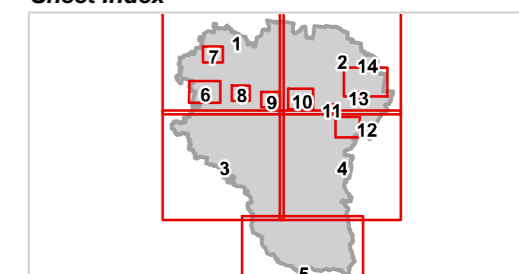
Commencement Date: 22 July 2024

Approx Scale @ A3: 1:10,000

0 0.5

kilometres

Sheet Index



OM3C Biodiversity - Wetlands overlay Plainland-13



# Lockyer Valley Regional Council Planning Scheme

REGIONAL COUNCIL

## OM3C Biodiversity - Waterway and Wetland Habitat overlay map

SOMERSET REGIONAL

### Matters of State Environmental Significance

Wetlands

### Matters of Local Environmental Significance

Wetlands

### Separation Areas

Waterway and Wetland Separation Area

### Waterways

Stream order 1 and 2

Stream order 3 and 4

Stream order 5 and greater

### Other Features

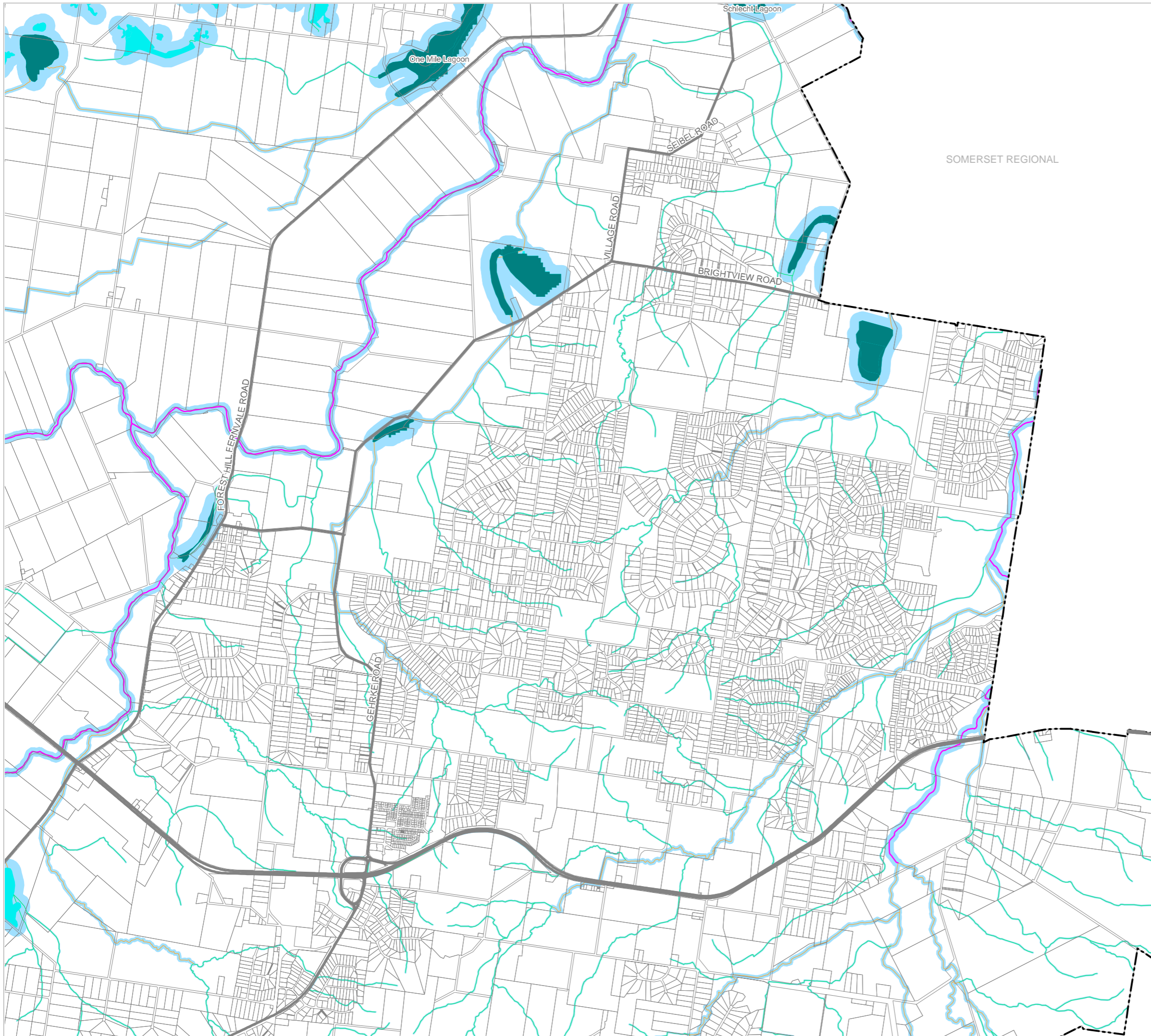
Major Road

Railway Network

Property Boundary

Local Government Boundary

Watercourse or Waterbody



### NOTE

Refer to online or electronic mapping where layers overlap or labels obstruct the data on the map.

### MAP INFORMATION

Based on or contains data sourced from the State Government which gives no warranty in relation to the data (including accuracy, reliability, completeness or suitability) and accepts no liability (including without limitation, liability in negligence) for any loss, damage or costs (including consequential damage) relating to any use of the data.

© Copyright Lockyer Valley Regional Council 2024

### DATA SOURCES

Cadastral data weekly - whole of State Queensland, Rail network - Queensland, Queensland roads and tracks, State controlled roads surveyed centreline - Queensland: © State of Queensland (Department of Resources) 2023. MSES - High ecological significance wetlands, MSES - High ecological value waters - wetlands: © State of Queensland (Department of Environment and Science) 2023

Geocentric Datum of Australia (GDA2020 / MGA zone 56)

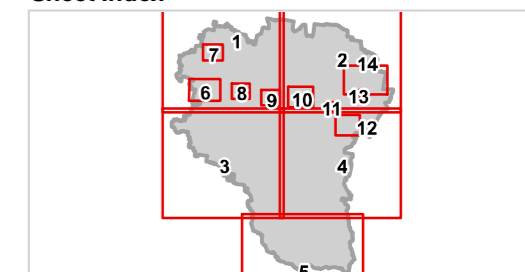


Commencement Date: 22 July 2024

Approx Scale @ A3: 1:40,000



### Sheet Index



OM3C Biodiversity - Wetlands overlay Regency Downs-14