



Lockyer Valley Regional Council Planning Scheme

REGIONAL COUNCIL

OM4 Bushfire hazard overlay map

- Bushfire Hazard**
- BH1 - Very High Potential Bushfire Intensity
 - BH2 - High Potential Bushfire Intensity
 - BH3 - Medium Potential Bushfire Intensity
 - BH4 - Potential Impact Buffer

- Other Features**
- Major Road
 - Railway Network
 - Property Boundary
 - Local Government Boundary
 - Watercourse or waterbody

NOTE
Refer to online or electronic mapping where layers overlap or labels obstruct the data on the map.

MAP INFORMATION
Based on or contains data sourced from the State Government which gives no warranty in relation to the data (including accuracy, reliability, completeness or suitability) and accepts no liability (including without limitation, liability in negligence) for any loss, damage or costs (including consequential damage) relating to any use of the data.
© Copyright Lockyer Valley Regional Council 2024

DATA SOURCES
Cadastral data weekly - whole of State Queensland, Rail network - Queensland, Queensland roads and tracks, State controlled roads surveyed centreline - Queensland: State of Queensland (Department of Resources) 2023. Bushfire prone area - South East Queensland: © State of Queensland (Queensland Fire and Emergency Services) 2020

Geocentric Datum of Australia (GDA2020 / MGA zone 56)

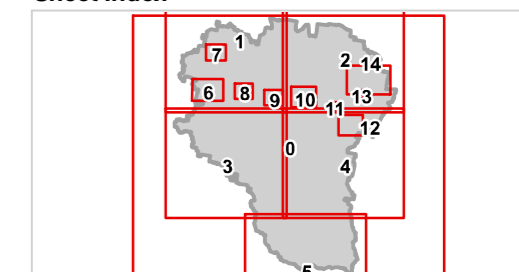
Commencement Date: 22 July 2024

Approx Scale @ A3: 1:250,000

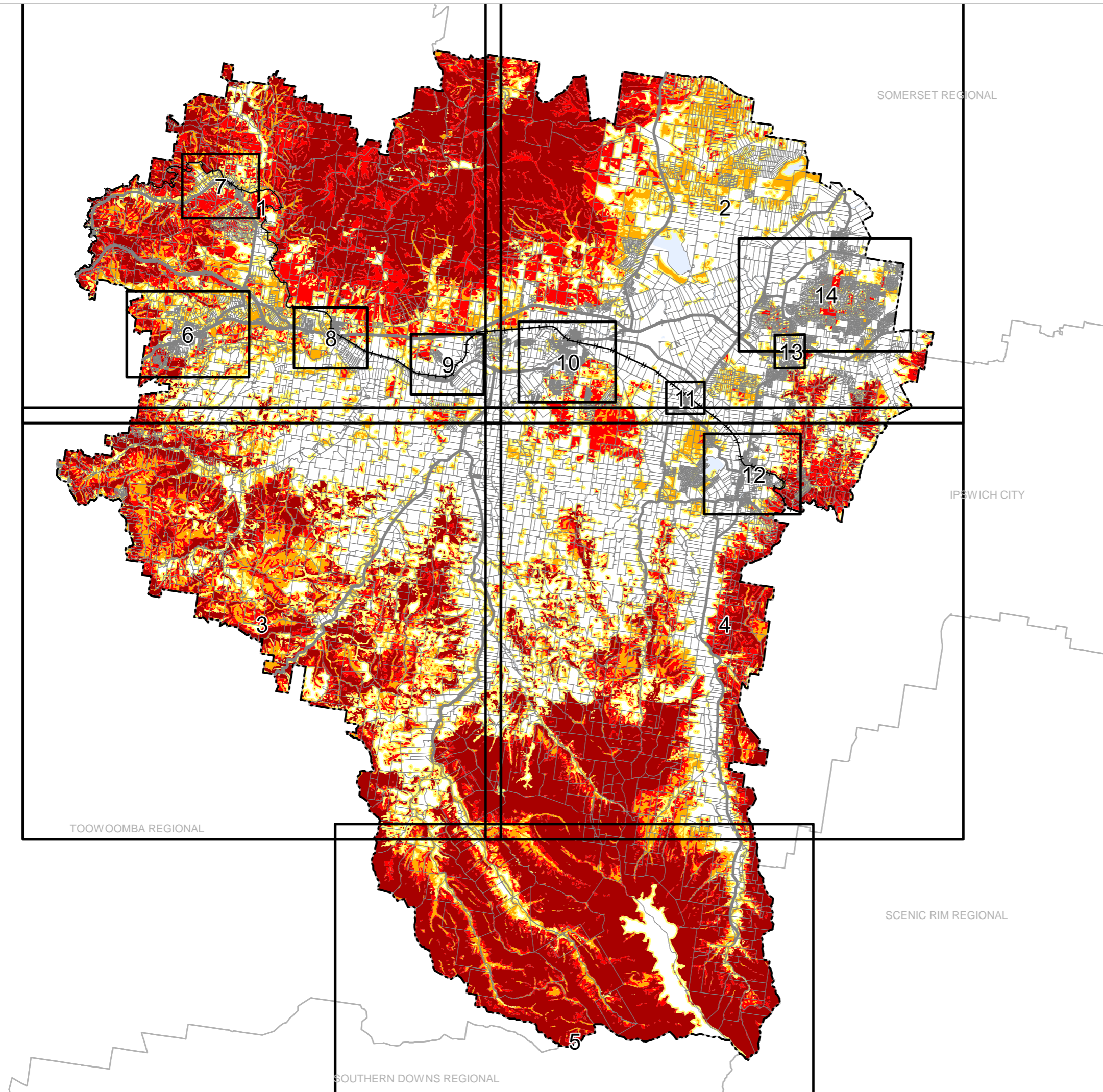
0 10

kilometres

Sheet Index



**OM4 Bushfire hazard overlay
Local government area - 00**





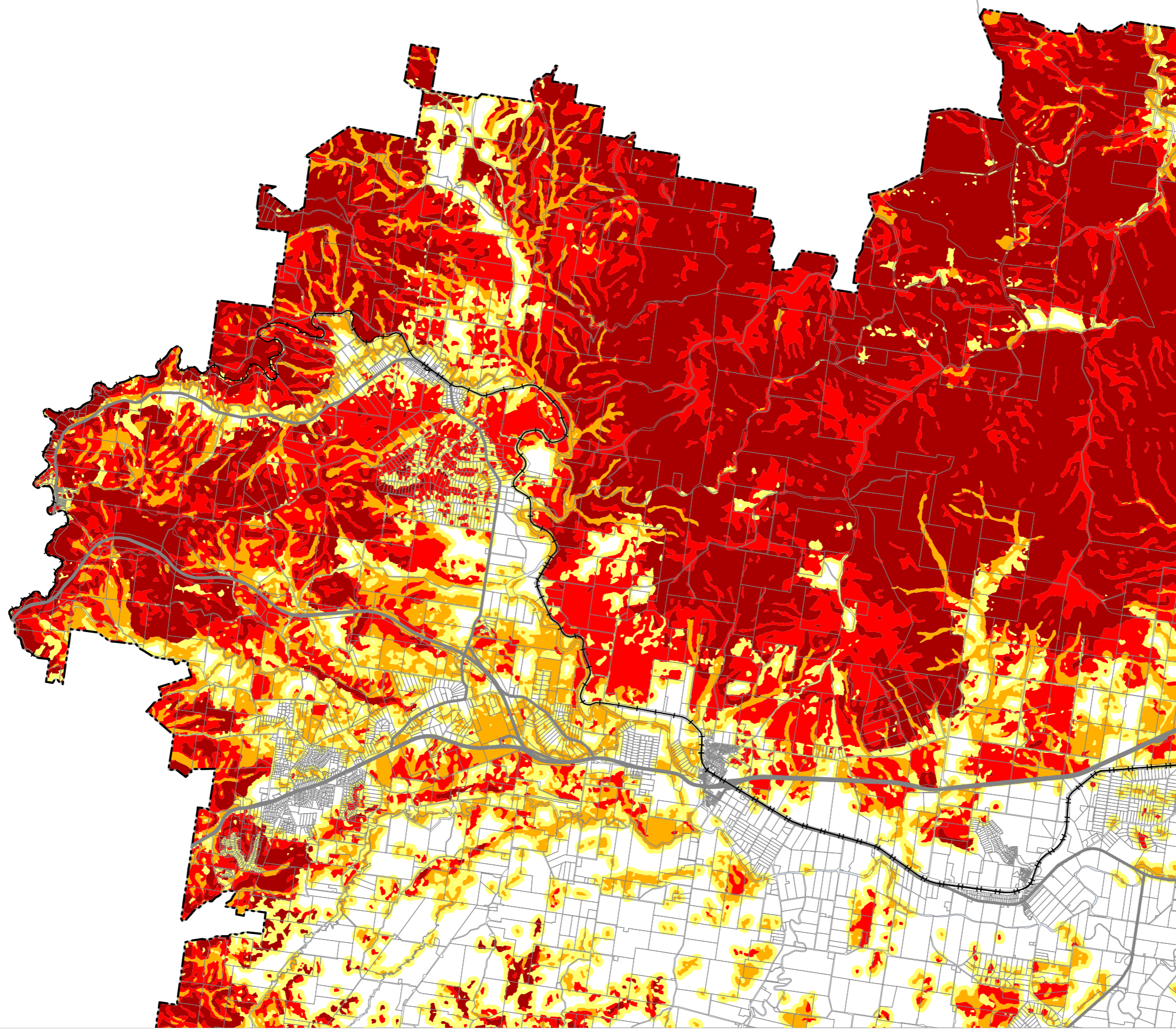
Lockyer Valley Regional Council Planning Scheme

REGIONAL COUNCIL

OM4 Bushfire hazard overlay map

TOOWOOMBA REGIONAL

SOMERSET REGIONAL



Bushfire Hazard

- BH1 - Very High Potential Bushfire Intensity
- BH2 - High Potential Bushfire Intensity
- BH3 - Medium Potential Bushfire Intensity
- BH4 - Potential Impact Buffer

Other Features

- Major Road
- Railway Network
- Property Boundary
- Local Government Boundary
- Watercourse or waterbody

NOTE

Refer to online or electronic mapping where layers overlap or labels obstruct the data on the map.

MAP INFORMATION

Based on or contains data sourced from the State Government which gives no warranty in relation to the data (including accuracy, reliability, completeness or suitability) and accepts no liability (including without limitation, liability in negligence) for any loss, damage or costs (including consequential damage) relating to any use of the data.
© Copyright Lockyer Valley Regional Council 2024

DATA SOURCES

Cadastral data weekly - whole of State Queensland, Rail network - Queensland, Queensland roads and tracks, State controlled roads surveyed centreline - Queensland: © State of Queensland (Department of Resources) 2023. Bushfire prone area - South East Queensland: © State of Queensland (Queensland Fire and Emergency Services) 2020

Geocentric Datum of Australia (GDA2020 / MGA zone 56)

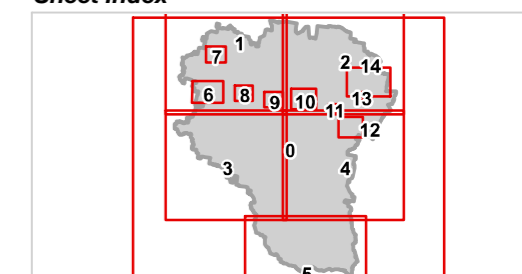


Commencement Date: 22 July 2024

Approx Scale @ A3: 1:100,000



Sheet Index



OM4 Bushfire hazard overlay
LGA north-west - 01



REGIONAL COUNCIL

SOMERSET REGIONAL

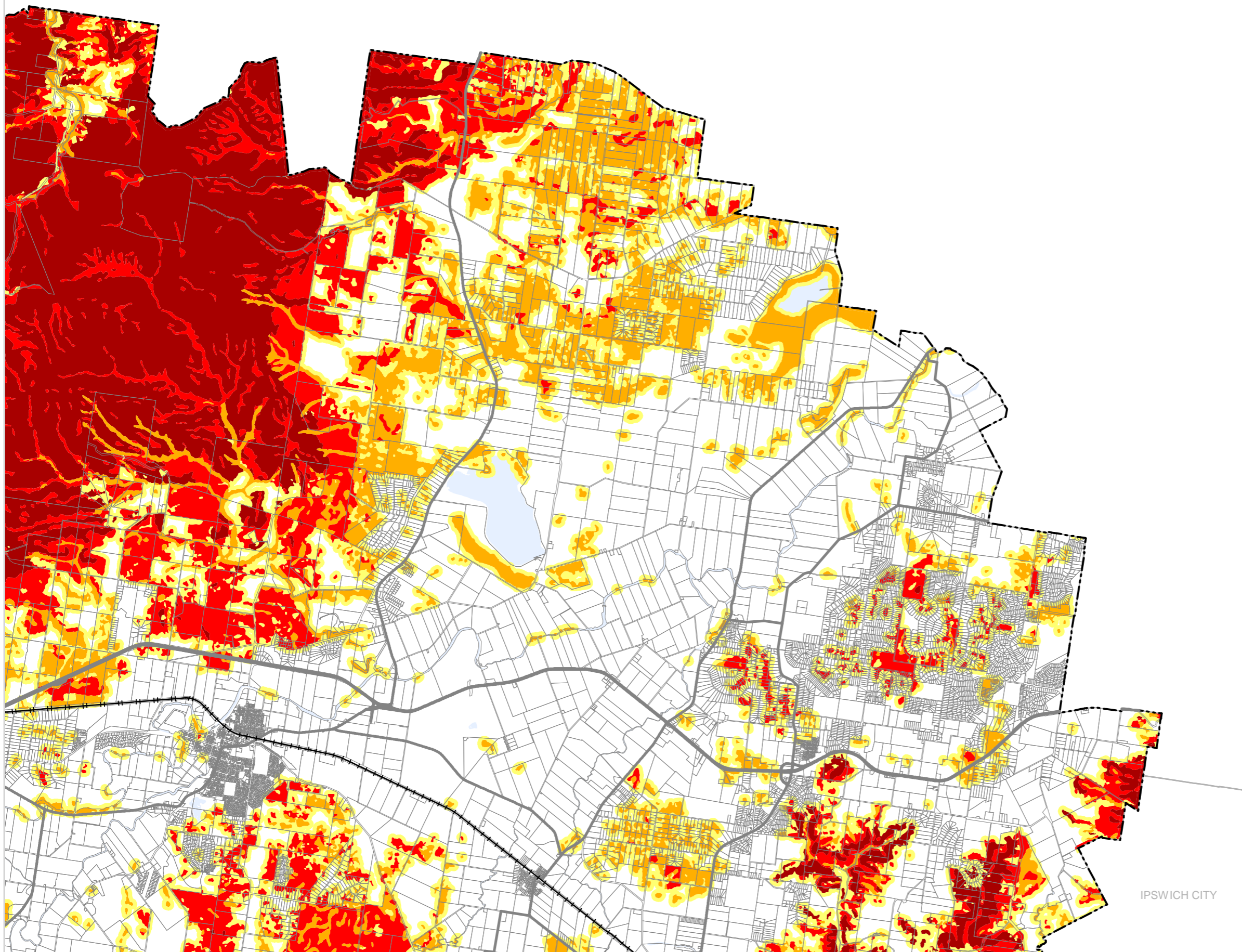
OM4 Bushfire hazard overlay map

Bushfire Hazard

- BH1 - Very High Potential Bushfire Intensity
- BH2 - High Potential Bushfire Intensity
- BH3 - Medium Potential Bushfire Intensity
- BH4 - Potential Impact Buffer

Other Features

- Major Road
- Railway Network
- Property Boundary
- Local Government Boundary
- Watercourse or waterbody



NOTE

Refer to online or electronic mapping where layers overlap or labels obstruct the data on the map.

MAP INFORMATION

Based on or contains data sourced from the State Government which gives no warranty in relation to the data (including accuracy, reliability, completeness or suitability) and accepts no liability (including without limitation, liability in negligence) for any loss, damage or costs (including consequential damage) relating to any use of the data.
© Copyright Lockyer Valley Regional Council 2024

DATA SOURCES

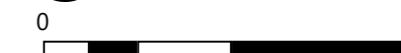
Cadastral data weekly - whole of State Queensland, Rail network - Queensland, Queensland roads and tracks, State controlled roads surveyed centreline - Queensland: © State of Queensland (Department of Resources) 2023. Bushfire prone area - South East Queensland: © State of Queensland (Queensland Fire and Emergency Services) 2020

Geocentric Datum of Australia (GDA2020 / MGA zone 56)

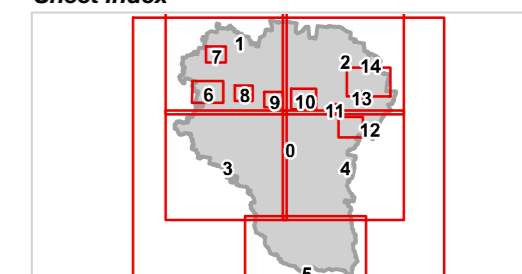


Commencement Date: 22 July 2024

Approx Scale @ A3: 1:100,000



Sheet Index



OM4 Bushfire hazard overlay LGA north-east - 02





IPSWICH CITY




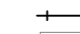



REGIONAL COUNCIL

OM4 Bushfire hazard overlay map

Bushfire Hazard

-  BH1 - Very High Potential Bushfire Intensity
-  BH2 - High Potential Bushfire Intensity
-  BH3 - Medium Potential Bushfire Intensity
-  BH4 - Potential Impact Buffer

Other Features

-  Major Road
-  Railway Network
-  Property Boundary
-  Local Government Boundary
-  Watercourse or waterbody

NOTE

Refer to online or electronic mapping where layers overlap or labels obstruct the data on the map.

MAP INFORMATION

Based on or contains data sourced from the State Government which gives no warranty in relation to the data (including accuracy, reliability, completeness or suitability) and accepts no liability (including without limitation, liability in negligence) for any loss, damage or costs (including consequential damage) relating to any use of the data.
© Copyright Lockyer Valley Regional Council 2024

DATA SOURCES

Cadastral data weekly - whole of State Queensland, Rail network - Queensland, Queensland roads and tracks, State controlled roads surveyed centreline - Queensland: © State of Queensland (Department of Resources) 2023. Bushfire prone area - South East Queensland: © State of Queensland (Queensland Fire and Emergency Services) 2020

Geocentric Datum of Australia (GDA2020 / MGA zone 56)



Commencement Date: 22 July 2024

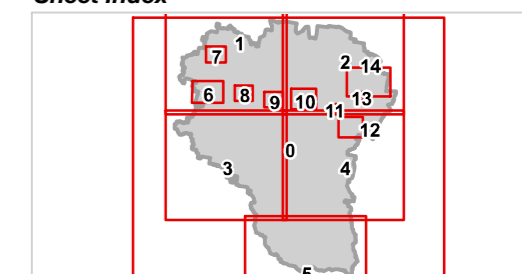
Approx Scale @ A3: 1:100,000

0 5



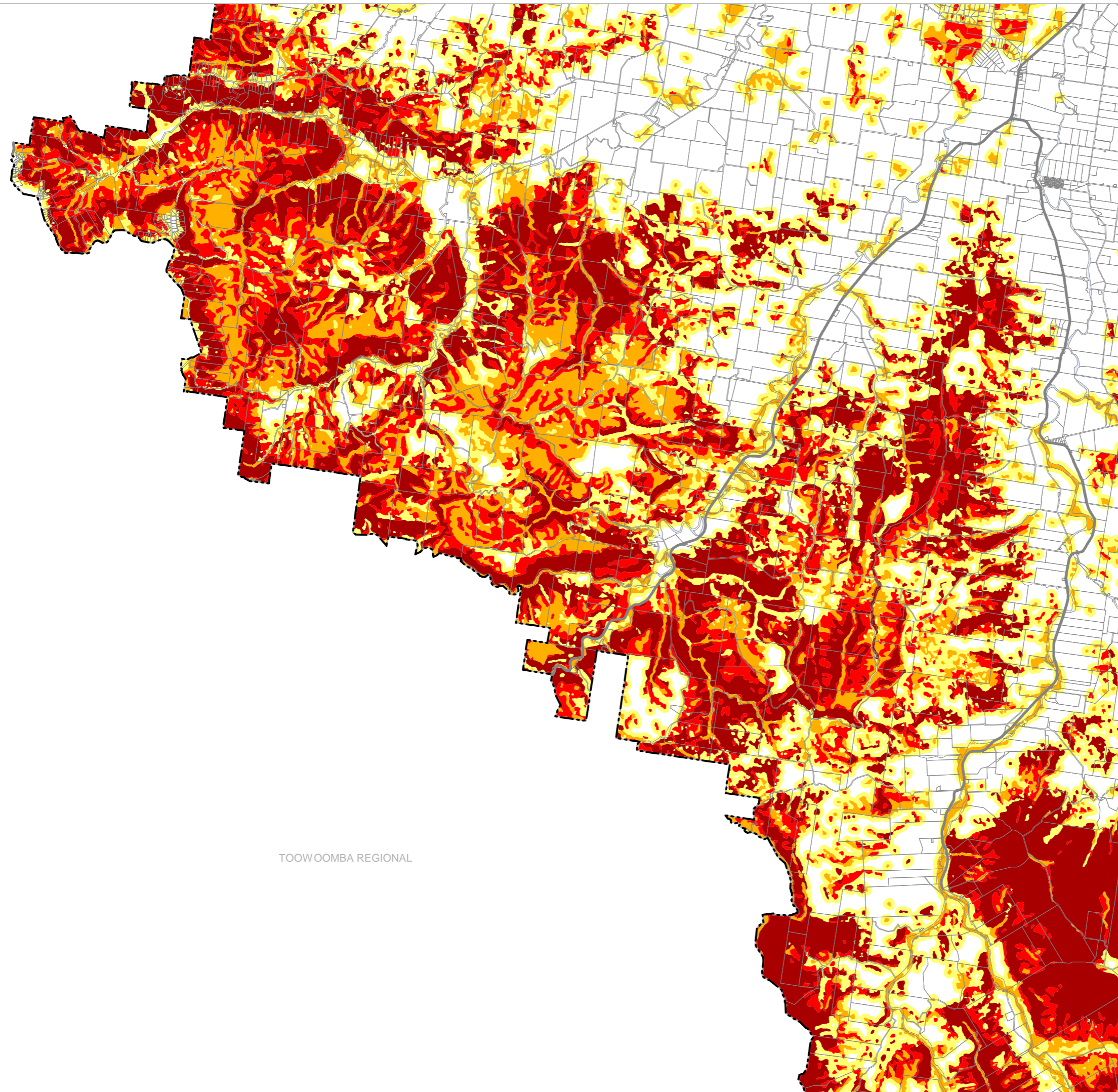
kilometres

Sheet Index



OM4 Bushfire hazard overlay
LGA south-west - 03

TOOWOOMBA REGIONAL





Lockyer Valley Regional Council Planning Scheme

REGIONAL COUNCIL

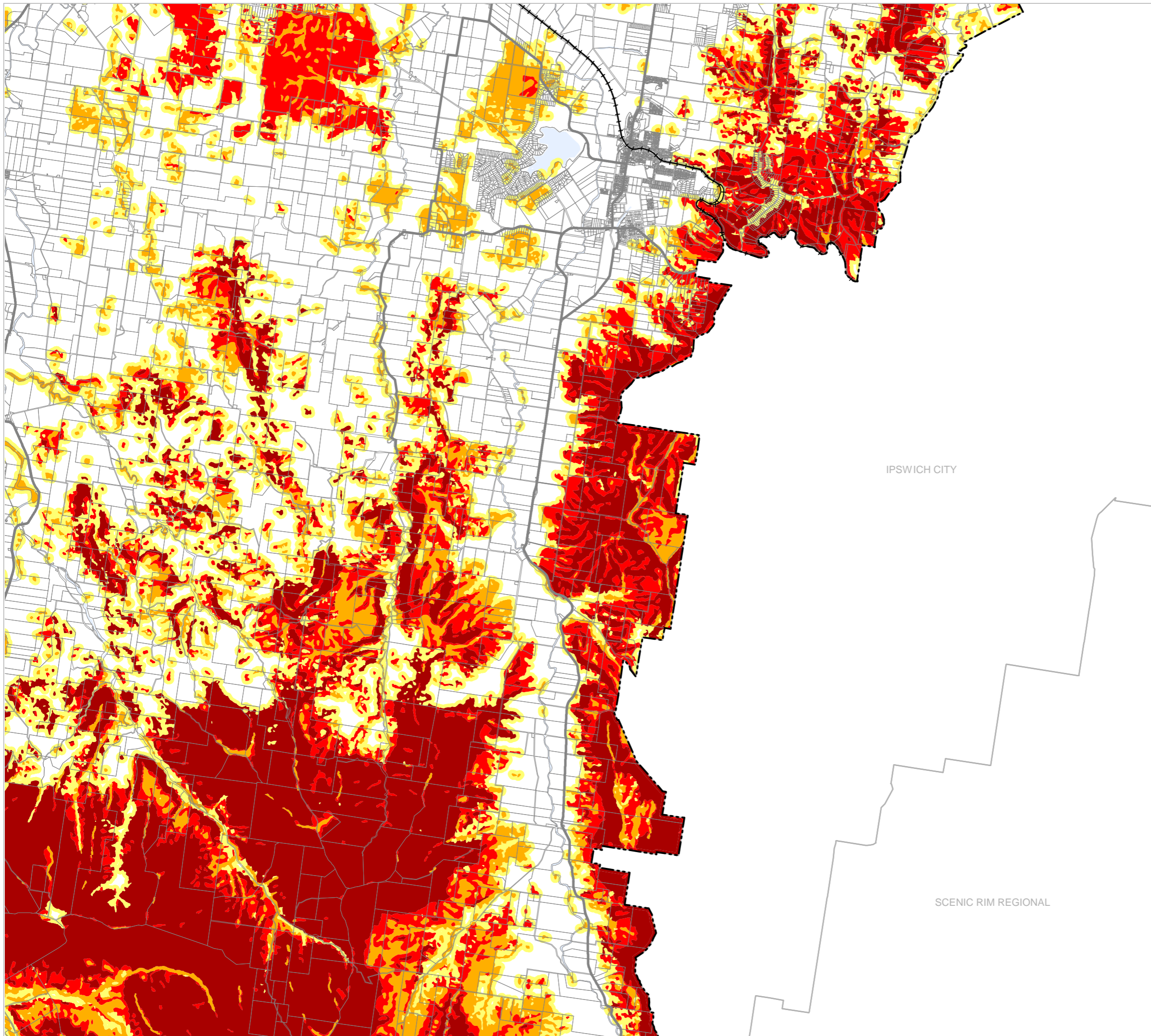
OM4 Bushfire hazard overlay map

Bushfire Hazard

- BH1 - Very High Potential Bushfire Intensity
- BH2 - High Potential Bushfire Intensity
- BH3 - Medium Potential Bushfire Intensity
- BH4 - Potential Impact Buffer

Other Features

- Major Road
- ++ Railway Network
- Property Boundary
- Local Government Boundary
- Watercourse or waterbody



IPSWICH CITY

SCENIC RIM REGIONAL

NOTE

Refer to online or electronic mapping where layers overlap or labels obstruct the data on the map.

MAP INFORMATION

Based on or contains data sourced from the State Government which gives no warranty in relation to the data (including accuracy, reliability, completeness or suitability) and accepts no liability (including without limitation, liability in negligence) for any loss, damage or costs (including consequential damage) relating to any use of the data.
© Copyright Lockyer Valley Regional Council 2024

DATA SOURCES

Cadastral data weekly - whole of State Queensland, Rail network - Queensland, Queensland roads and tracks, State controlled roads surveyed centreline - Queensland: © State of Queensland (Department of Resources) 2023. Bushfire prone area - South East Queensland: © State of Queensland (Queensland Fire and Emergency Services) 2020

Geocentric Datum of Australia (GDA2020 / MGA zone 56)



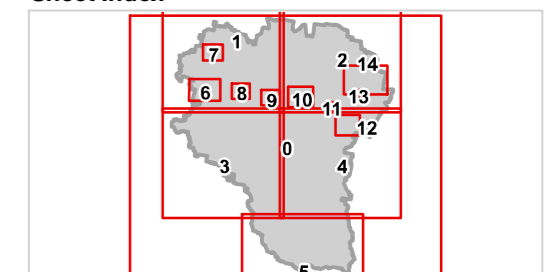
Commencement Date: 22 July 2024

Approx Scale @ A3: 1:100,000



kilometres

Sheet Index



OM4 Bushfire hazard overlay
LGA south-east - 04



Lockyer Valley Regional Council Planning Scheme

REGIONAL COUNCIL

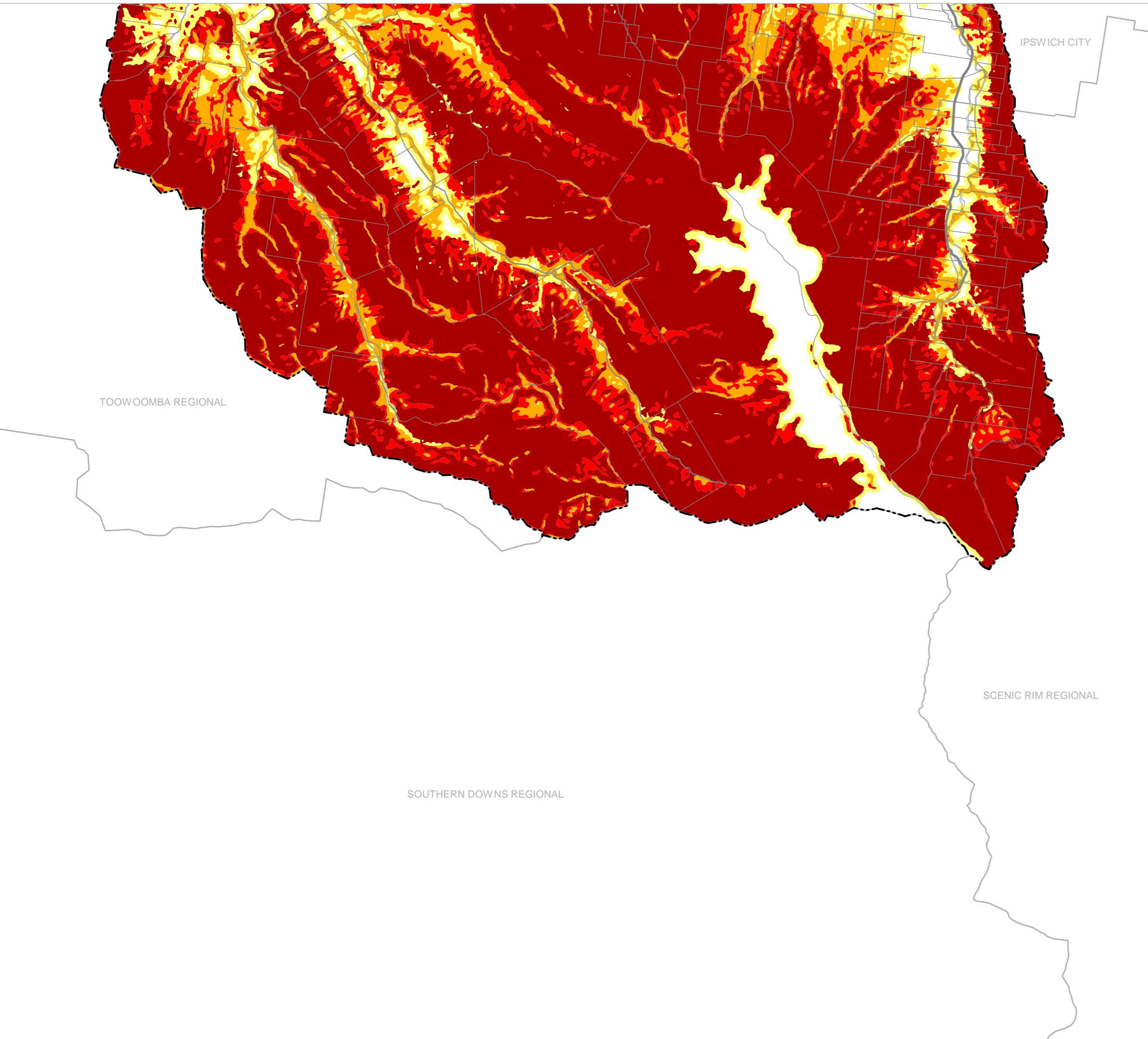
OM4 Bushfire hazard overlay map

Bushfire Hazard

- BH1 - Very High Potential Bushfire Intensity
- BH2 - High Potential Bushfire Intensity
- BH3 - Medium Potential Bushfire Intensity
- BH4 - Potential Impact Buffer

Other Features

- Major Road
- Railway Network
- Property Boundary
- Local Government Boundary
- Watercourse or waterbody



NOTE

Refer to online or electronic mapping where layers overlap or labels obstruct the data on the map.

MAP INFORMATION

Based on or contains data sourced from the State Government which gives no warranty in relation to the data (including accuracy, reliability, completeness or suitability) and accepts no liability (including without limitation, liability in negligence) for any loss, damage or costs (including consequential damage) relating to any use of the data.
© Copyright Lockyer Valley Regional Council 2024

DATA SOURCES

Cadastral data weekly - whole of State Queensland, Rail network - Queensland, Queensland roads and tracks, State controlled roads surveyed centreline - Queensland: © State of Queensland (Department of Resources) 2023. Bushfire prone area - South East Queensland: © State of Queensland (Queensland Fire and Emergency Services) 2020

Geocentric Datum of Australia (GDA2020 / MGA zone 56)



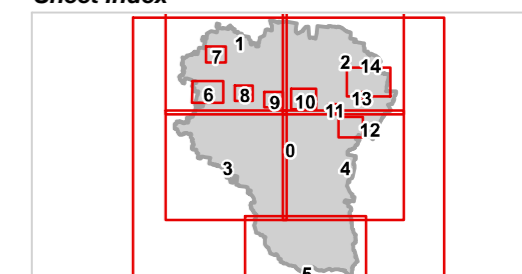
Commencement Date: 22 July 2024

Approx Scale @ A3: 1:100,000

0 5

kilometres

Sheet Index



OM4 Bushfire hazard overlay
LGA south - 05



Lockyer Valley Regional Council Planning Scheme

REGIONAL COUNCIL

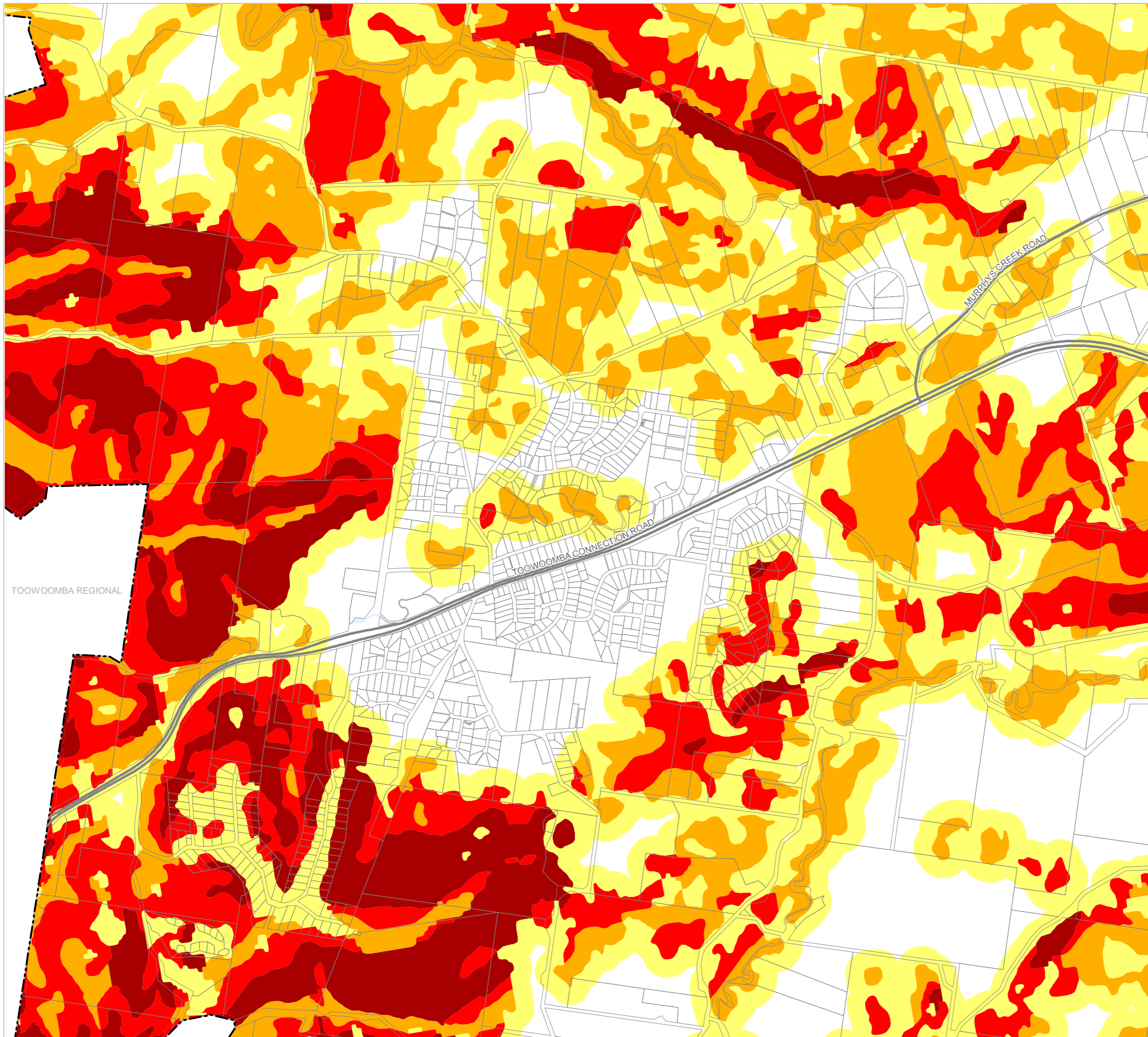
OM4 Bushfire hazard overlay map

Bushfire Hazard

- BH1 - Very High Potential Bushfire Intensity
- BH2 - High Potential Bushfire Intensity
- BH3 - Medium Potential Bushfire Intensity
- BH4 - Potential Impact Buffer

Other Features

- Major Road
- ++ Railway Network
- Property Boundary
- Local Government Boundary
- Watercourse or waterbody



TOOWOOMBA REGIONAL

NOTE

Refer to online or electronic mapping where layers overlap or labels obstruct the data on the map.

MAP INFORMATION

Based on or contains data sourced from the State Government which gives no warranty in relation to the data (including accuracy, reliability, completeness or suitability) and accepts no liability (including without limitation, liability in negligence) for any loss, damage or costs (including consequential damage) relating to any use of the data.
© Copyright Lockyer Valley Regional Council 2024

DATA SOURCES

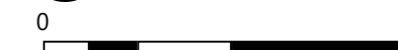
Cadastral data weekly - whole of State Queensland, Rail network - Queensland, Queensland roads and tracks, State controlled roads surveyed centreline - Queensland: © State of Queensland (Department of Resources) 2023. Bushfire prone area - South East Queensland: © State of Queensland (Queensland Fire and Emergency Services) 2020

Geocentric Datum of Australia (GDA2020 / MGA zone 56)



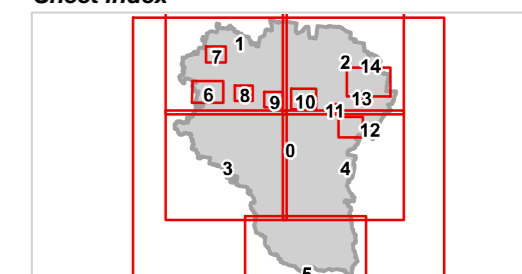
Commencement Date: 22 July 2024

Approx Scale @ A3: 1:20,000



kilometres

Sheet Index







OM4 Bushfire hazard overlay
Withcott - 06




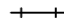



REGIONAL COUNCIL

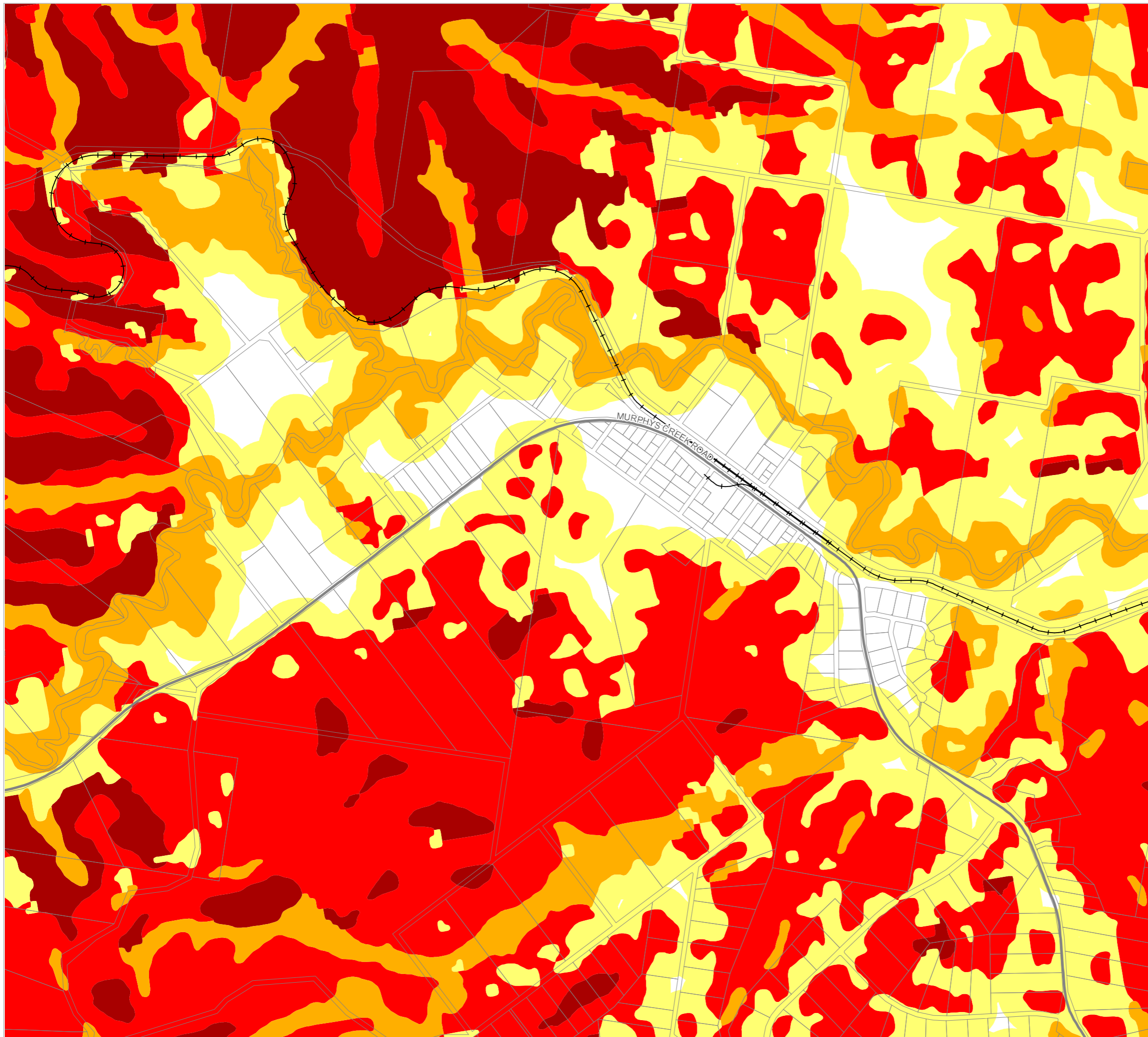
OM4 Bushfire hazard overlay map

Bushfire Hazard

-  BH1 - Very High Potential Bushfire Intensity
-  BH2 - High Potential Bushfire Intensity
-  BH3 - Medium Potential Bushfire Intensity
-  BH4 - Potential Impact Buffer

Other Features

-  Major Road
-  Railway Network
-  Property Boundary
-  Local Government Boundary
-  Watercourse or waterbody



NOTE

Refer to online or electronic mapping where layers overlap or labels obstruct the data on the map.

MAP INFORMATION

Based on or contains data sourced from the State Government which gives no warranty in relation to the data (including accuracy, reliability, completeness or suitability) and accepts no liability (including without limitation, liability in negligence) for any loss, damage or costs (including consequential damage) relating to any use of the data.
© Copyright Lockyer Valley Regional Council 2024

DATA SOURCES

Cadastral data weekly - whole of State Queensland, Rail network - Queensland, Queensland roads and tracks, State controlled roads surveyed centreline - Queensland: © State of Queensland (Department of Resources) 2023. Bushfire prone area - South East Queensland: © State of Queensland (Queensland Fire and Emergency Services) 2020

Geocentric Datum of Australia (GDA2020 / MGA zone 56)



Commencement Date: 22 July 2024

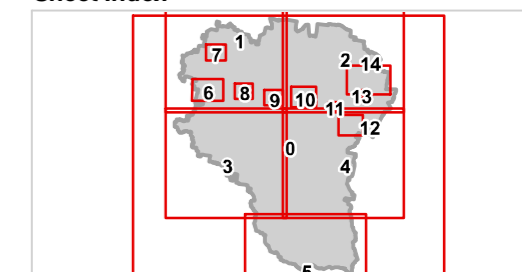
Approx Scale @ A3: 1:15,000

0 0.5



kilometres

Sheet Index



OM4 Bushfire hazard overlay
Murphys Creek - 07



Lockyer Valley Regional Council Planning Scheme

REGIONAL COUNCIL

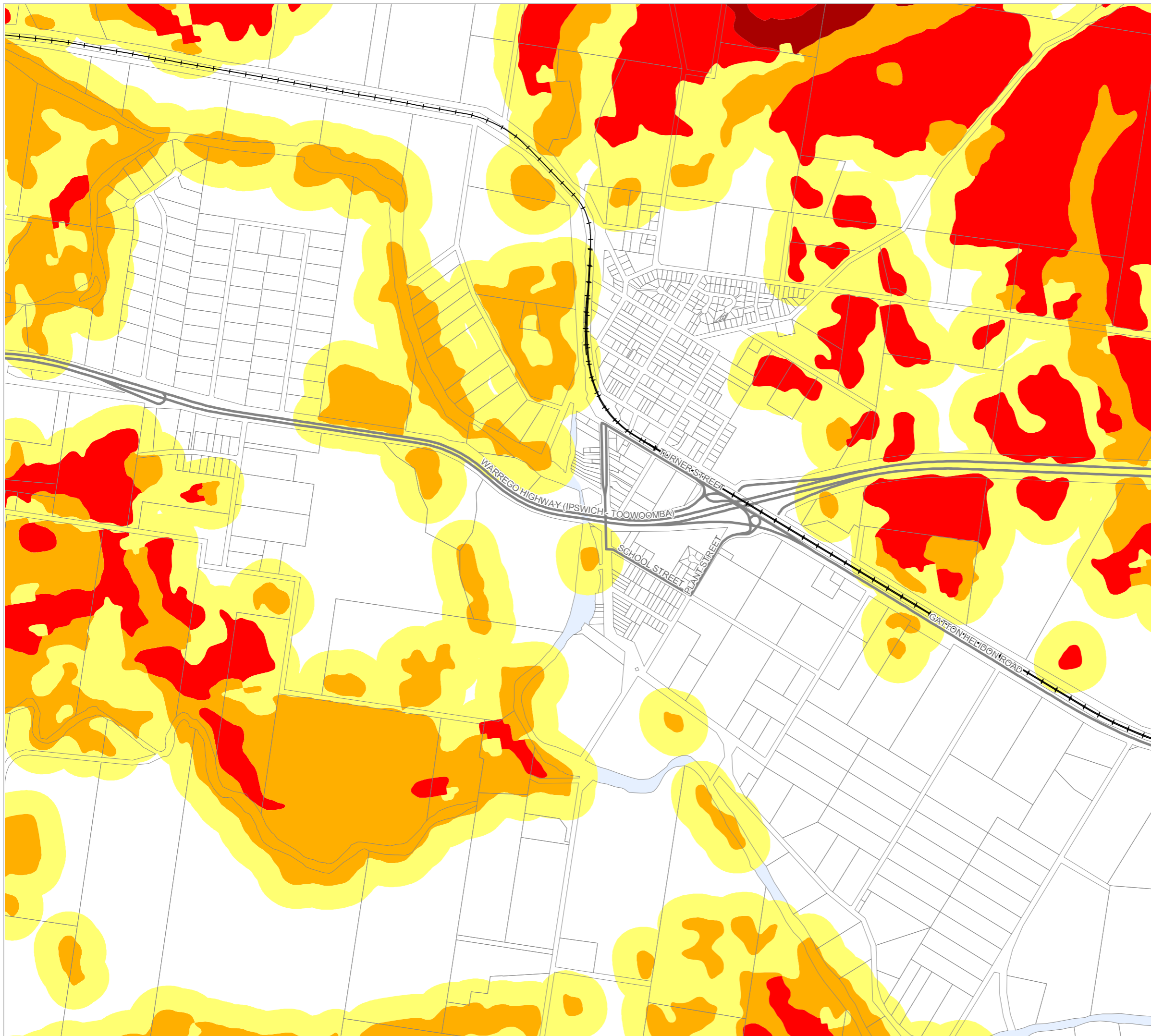
OM4 Bushfire hazard overlay map

Bushfire Hazard

- BH1 - Very High Potential Bushfire Intensity
- BH2 - High Potential Bushfire Intensity
- BH3 - Medium Potential Bushfire Intensity
- BH4 - Potential Impact Buffer

Other Features

- Major Road
- Railway Network
- Property Boundary
- Local Government Boundary
- Watercourse or waterbody



NOTE

Refer to online or electronic mapping where layers overlap or labels obstruct the data on the map.

MAP INFORMATION

Based on or contains data sourced from the State Government which gives no warranty in relation to the data (including accuracy, reliability, completeness or suitability) and accepts no liability (including without limitation, liability in negligence) for any loss, damage or costs (including consequential damage) relating to any use of the data.
© Copyright Lockyer Valley Regional Council 2024

DATA SOURCES

Cadastral data weekly - whole of State Queensland, Rail network - Queensland, Queensland roads and tracks, State controlled roads surveyed centreline - Queensland: © State of Queensland (Department of Resources) 2023. Bushfire prone area - South East Queensland: © State of Queensland (Queensland Fire and Emergency Services) 2020

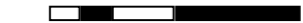
Geocentric Datum of Australia (GDA2020 / MGA zone 56)



Commencement Date: 22 July 2024

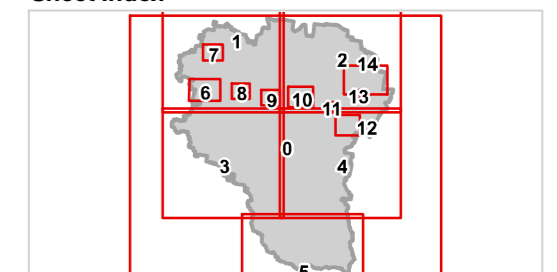
Approx Scale @ A3: 1:15,000

0 0.5



kilometres

Sheet Index



OM4 Bushfire hazard overlay
Helidon - 08



Lockyer Valley Regional Council Planning Scheme

REGIONAL COUNCIL

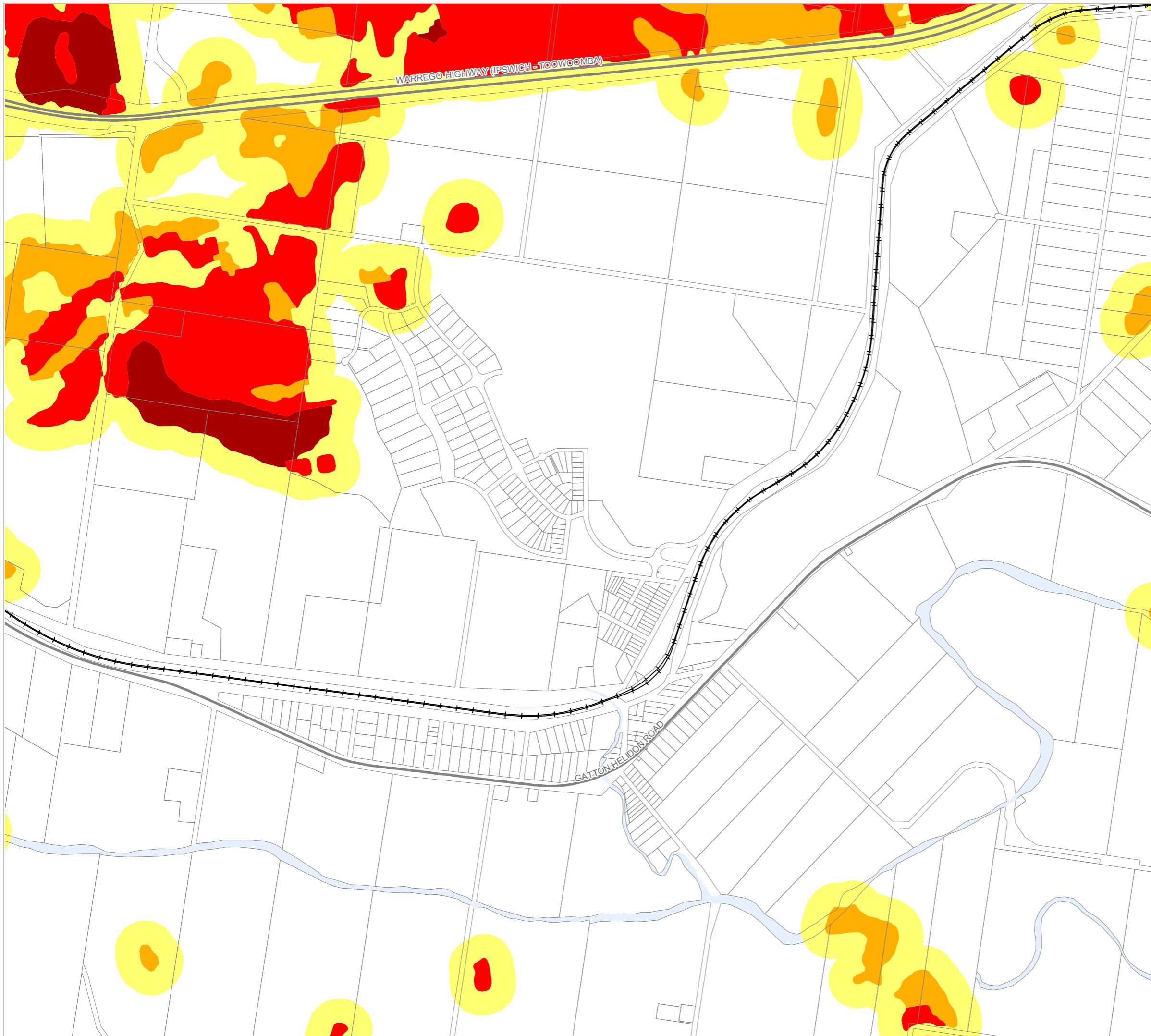
OM4 Bushfire hazard overlay map

Bushfire Hazard

- BH1 - Very High Potential Bushfire Intensity
- BH2 - High Potential Bushfire Intensity
- BH3 - Medium Potential Bushfire Intensity
- BH4 - Potential Impact Buffer

Other Features

- Major Road
- Railway Network
- Property Boundary
- Local Government Boundary
- Watercourse or waterbody



NOTE

Refer to online or electronic mapping where layers overlap or labels obstruct the data on the map.

MAP INFORMATION

Based on or contains data sourced from the State Government which gives no warranty in relation to the data (including accuracy, reliability, completeness or suitability) and accepts no liability (including without limitation, liability in negligence) for any loss, damage or costs (including consequential damage) relating to any use of the data.
© Copyright Lockyer Valley Regional Council 2024

DATA SOURCES

Cadastral data weekly - whole of State Queensland, Rail network - Queensland, Queensland roads and tracks, State controlled roads surveyed centreline - Queensland: © State of Queensland (Department of Resources) 2023. Bushfire prone area - South East Queensland: © State of Queensland (Queensland Fire and Emergency Services) 2020

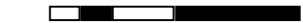
Geocentric Datum of Australia (GDA2020 / MGA zone 56)



Commencement Date: 22 July 2024

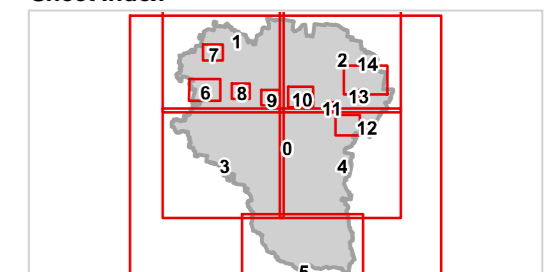
Approx Scale @ A3: 1:15,000

0 0.5



kilometres

Sheet Index



OM4 Bushfire hazard overlay Grantham - 09



REGIONAL COUNCIL

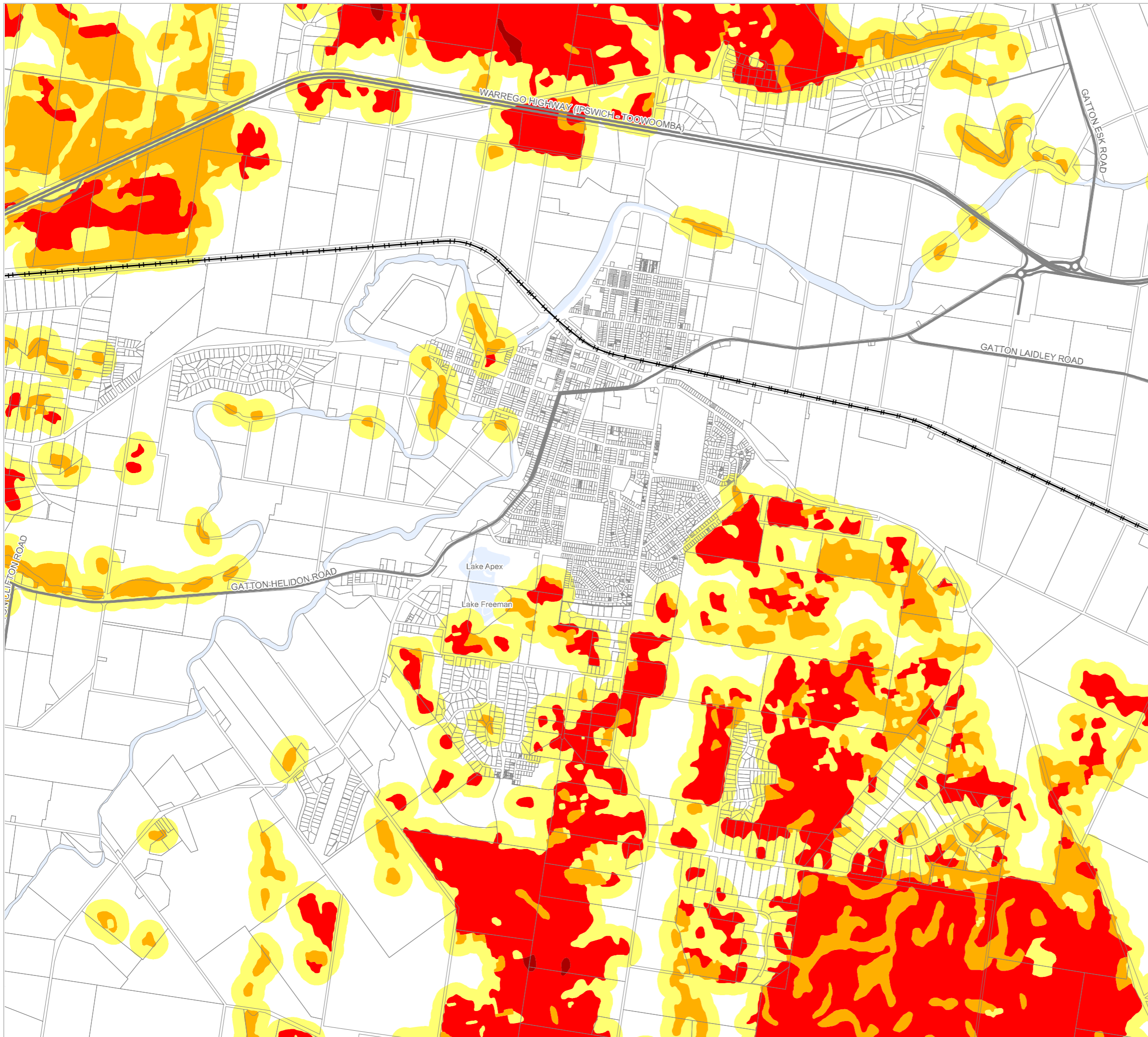
OM4 Bushfire hazard overlay map

Bushfire Hazard

- BH1 - Very High Potential Bushfire Intensity
- BH2 - High Potential Bushfire Intensity
- BH3 - Medium Potential Bushfire Intensity
- BH4 - Potential Impact Buffer

Other Features

- Major Road
- Railway Network
- Property Boundary
- Local Government Boundary
- Watercourse or waterbody



NOTE

Refer to online or electronic mapping where layers overlap or labels obstruct the data on the map.

MAP INFORMATION

Based on or contains data sourced from the State Government which gives no warranty in relation to the data (including accuracy, reliability, completeness or suitability) and accepts no liability (including without limitation, liability in negligence) for any loss, damage or costs (including consequential damage) relating to any use of the data. © Copyright Lockyer Valley Regional Council 2024

DATA SOURCES

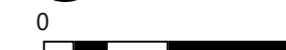
Cadastral data weekly - whole of State Queensland, Rail network - Queensland, Queensland roads and tracks, State controlled roads surveyed centreline - Queensland: © State of Queensland (Department of Resources) 2023. Bushfire prone area - South East Queensland: © State of Queensland (Queensland Fire and Emergency Services) 2020

Geocentric Datum of Australia (GDA2020 / MGA zone 56)



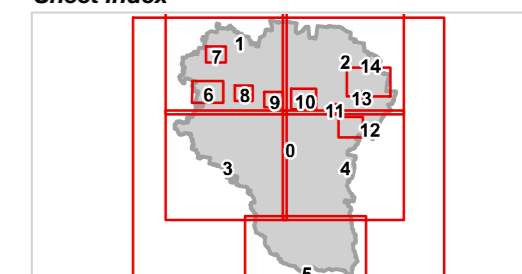
Commencement Date: 22 July 2024

Approx Scale @ A3: 1:30,000



kilometres

Sheet Index



OM4 Bushfire hazard overlay Gatton - 10



Lockyer Valley Regional Council Planning Scheme

REGIONAL COUNCIL

OM4 Bushfire hazard overlay map

Bushfire Hazard

- BH1 - Very High Potential Bushfire Intensity
- BH2 - High Potential Bushfire Intensity
- BH3 - Medium Potential Bushfire Intensity
- BH4 - Potential Impact Buffer

Other Features

- Major Road
- Railway Network
- Property Boundary
- Local Government Boundary
- Watercourse or waterbody

NOTE

Refer to online or electronic mapping where layers overlap or labels obstruct the data on the map.

MAP INFORMATION

Based on or contains data sourced from the State Government which gives no warranty in relation to the data (including accuracy, reliability, completeness or suitability) and accepts no liability (including without limitation, liability in negligence) for any loss, damage or costs (including consequential damage) relating to any use of the data.
© Copyright Lockyer Valley Regional Council 2024

DATA SOURCES

Cadastral data weekly - whole of State Queensland, Rail network - Queensland, Queensland roads and tracks, State controlled roads surveyed centreline - Queensland: © State of Queensland (Department of Resources) 2023. Bushfire prone area - South East Queensland: © State of Queensland (Queensland Fire and Emergency Services) 2020

Geocentric Datum of Australia (GDA2020 / MGA zone 56)

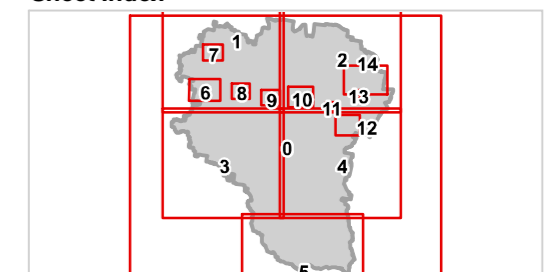


Commencement Date: 22 July 2024

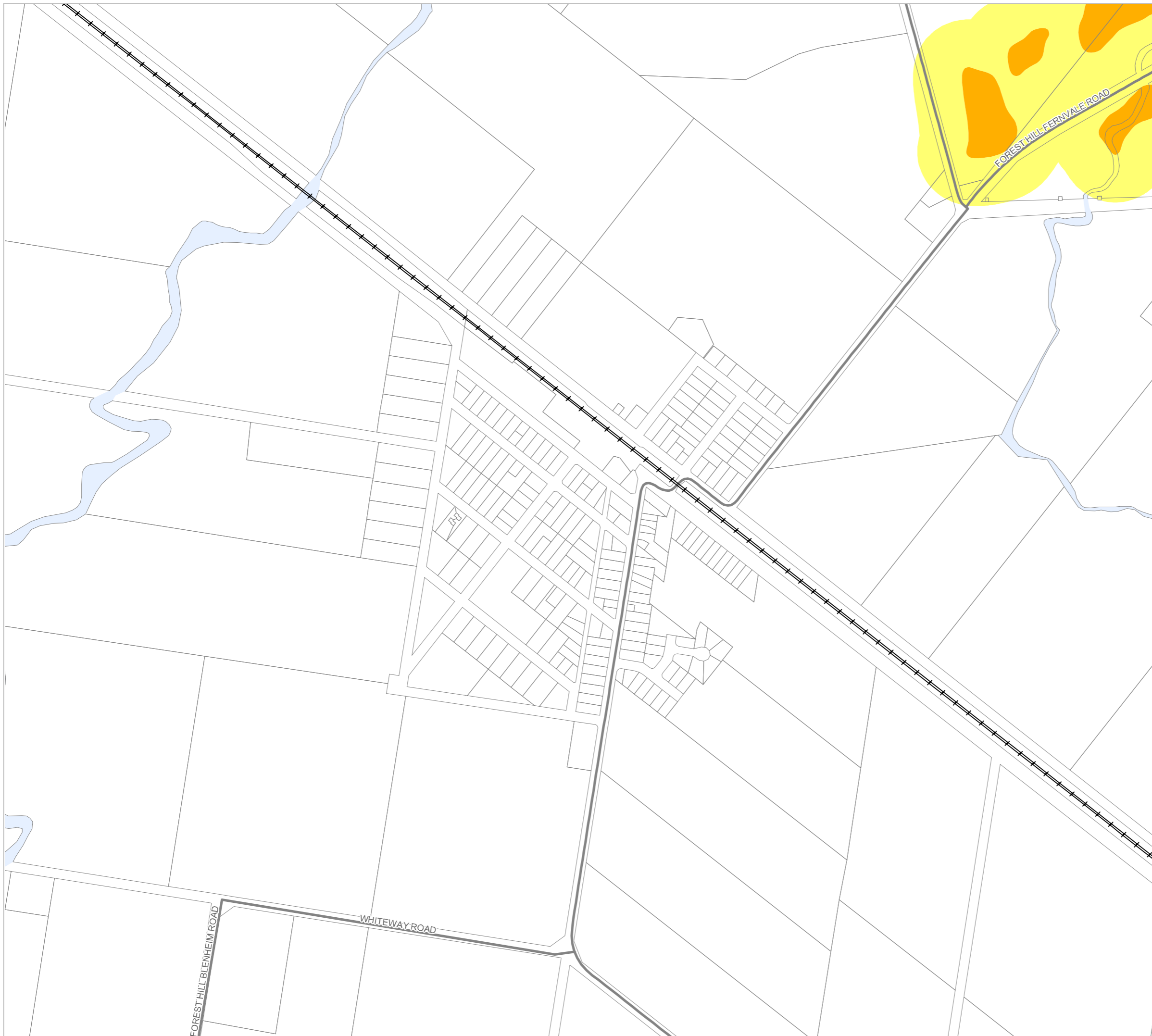
Approx Scale @ A3: 1:7,500



Sheet Index



OM4 Bushfire hazard overlay
Forest Hill - 11





Lockyer Valley Regional Council Planning Scheme

REGIONAL COUNCIL

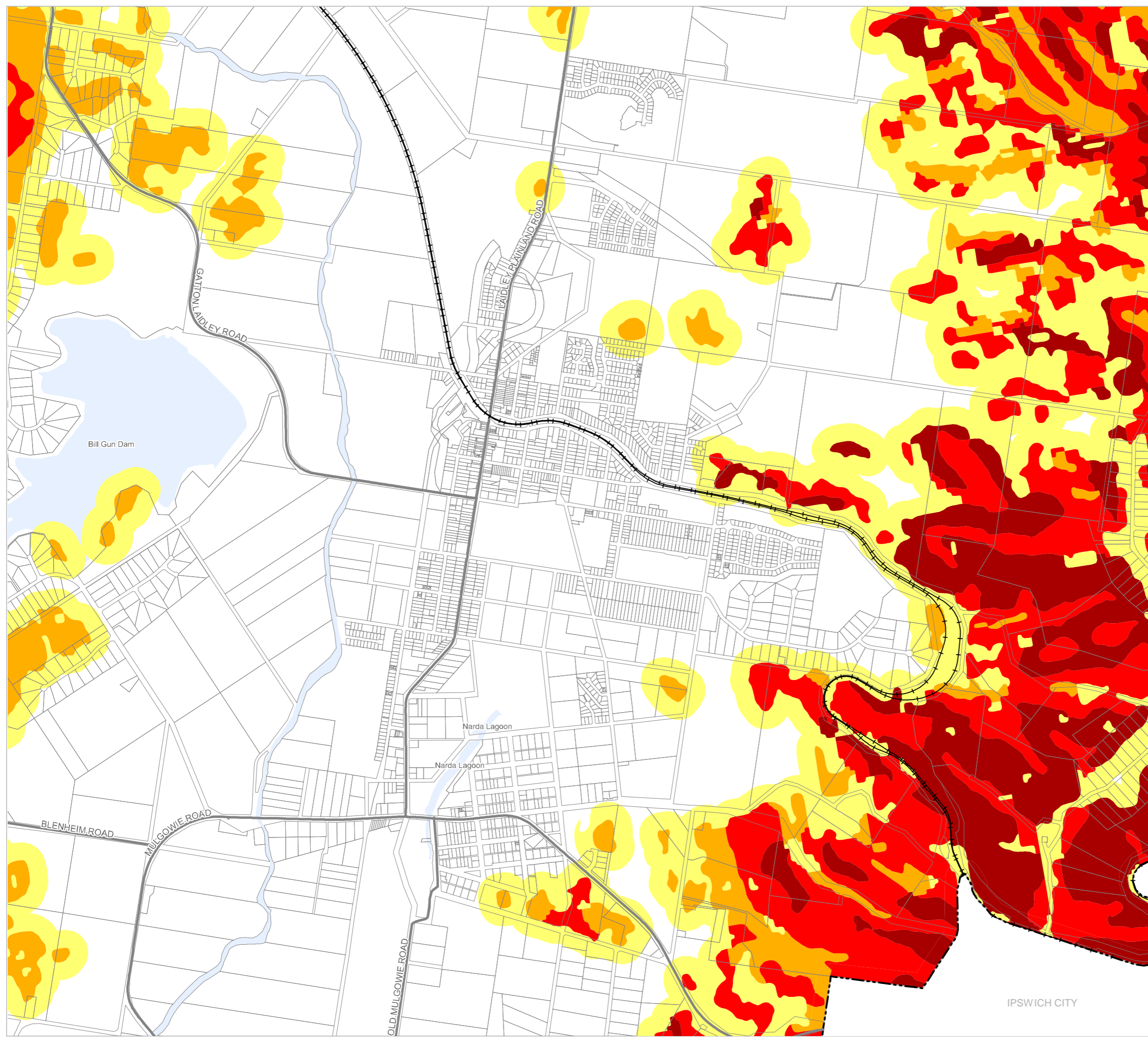
OM4 Bushfire hazard overlay map

Bushfire Hazard

- BH1 - Very High Potential Bushfire Intensity
- BH2 - High Potential Bushfire Intensity
- BH3 - Medium Potential Bushfire Intensity
- BH4 - Potential Impact Buffer

Other Features

- Major Road
- Railway Network
- Property Boundary
- Local Government Boundary
- Watercourse or waterbody



NOTE

Refer to online or electronic mapping where layers overlap or labels obstruct the data on the map.

MAP INFORMATION

Based on or contains data sourced from the State Government which gives no warranty in relation to the data (including accuracy, reliability, completeness or suitability) and accepts no liability (including without limitation, liability in negligence) for any loss, damage or costs (including consequential damage) relating to any use of the data.
© Copyright Lockyer Valley Regional Council 2024

DATA SOURCES

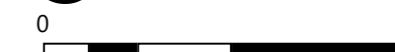
Cadastral data weekly - whole of State Queensland, Rail network - Queensland, Queensland roads and tracks, State controlled roads surveyed centreline - Queensland: © State of Queensland (Department of Resources) 2023. Bushfire prone area - South East Queensland: © State of Queensland (Queensland Fire and Emergency Services) 2020

Geocentric Datum of Australia (GDA2020 / MGA zone 56)

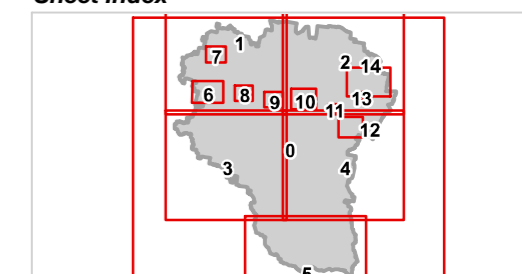


Commencement Date: 22 July 2024

Approx Scale @ A3: 1:20,000



Sheet Index



OM4 Bushfire hazard overlay Laidley - 12



REGIONAL COUNCIL

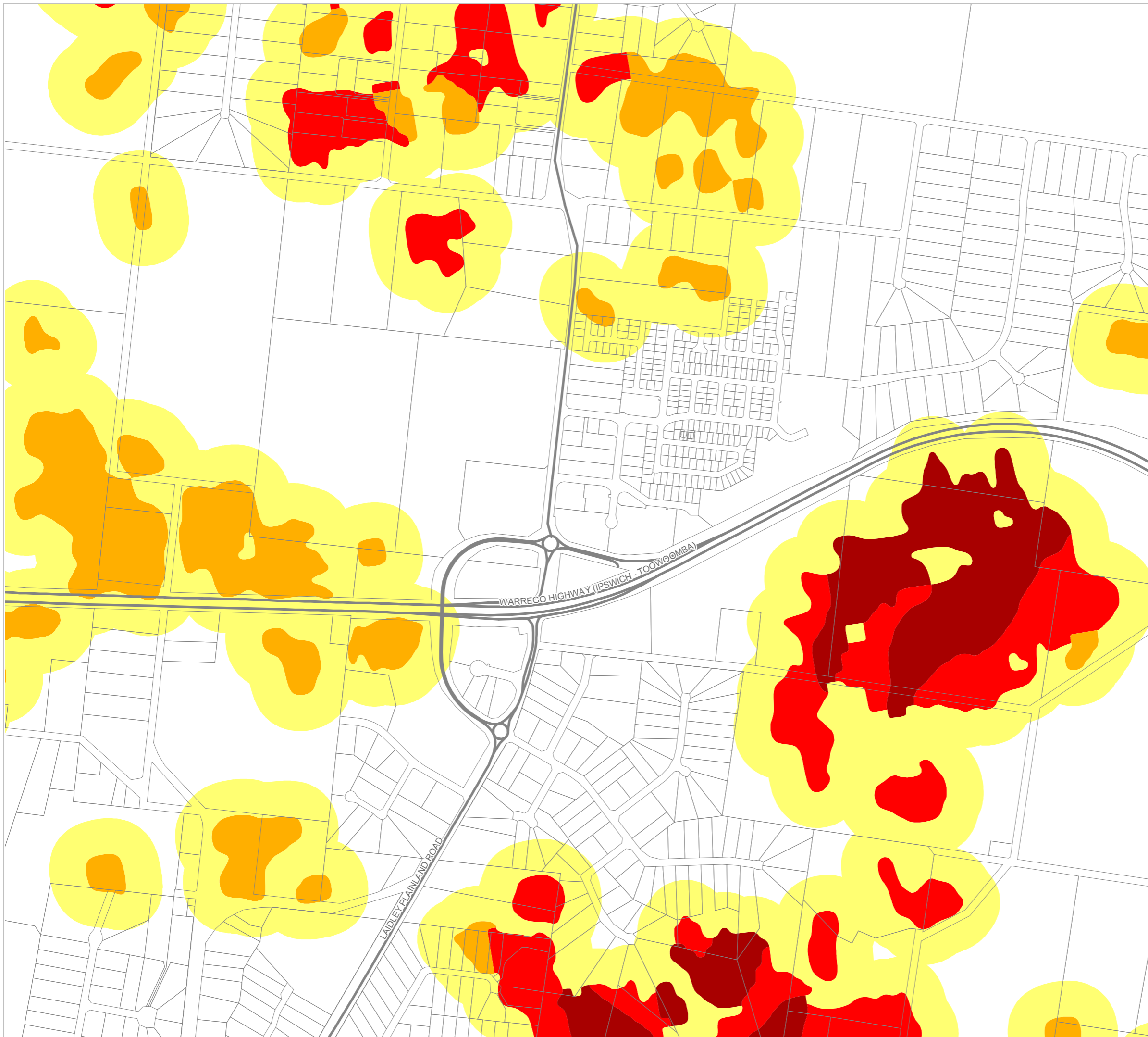
OM4 Bushfire hazard overlay map

Bushfire Hazard

- BH1 - Very High Potential Bushfire Intensity
- BH2 - High Potential Bushfire Intensity
- BH3 - Medium Potential Bushfire Intensity
- BH4 - Potential Impact Buffer

Other Features

- Major Road
- Railway Network
- Property Boundary
- Local Government Boundary
- Watercourse or waterbody



NOTE

Refer to online or electronic mapping where layers overlap or labels obstruct the data on the map.

MAP INFORMATION

Based on or contains data sourced from the State Government which gives no warranty in relation to the data (including accuracy, reliability, completeness or suitability) and accepts no liability (including without limitation, liability in negligence) for any loss, damage or costs (including consequential damage) relating to any use of the data.
© Copyright Lockyer Valley Regional Council 2024

DATA SOURCES

Cadastral data weekly - whole of State Queensland, Rail network - Queensland, Queensland roads and tracks, State controlled roads surveyed centreline - Queensland: © State of Queensland (Department of Resources) 2023. Bushfire prone area - South East Queensland: © State of Queensland (Queensland Fire and Emergency Services) 2020

Geocentric Datum of Australia (GDA2020 / MGA zone 56)



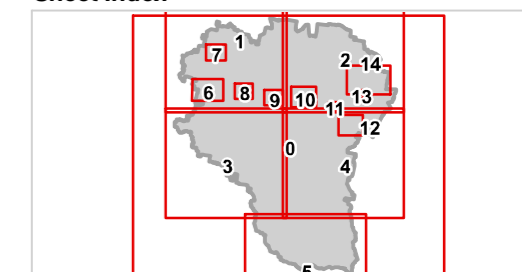
Commencement Date: 22 July 2024

Approx Scale @ A3: 1:10,000

0 0.5

kilometres

Sheet Index

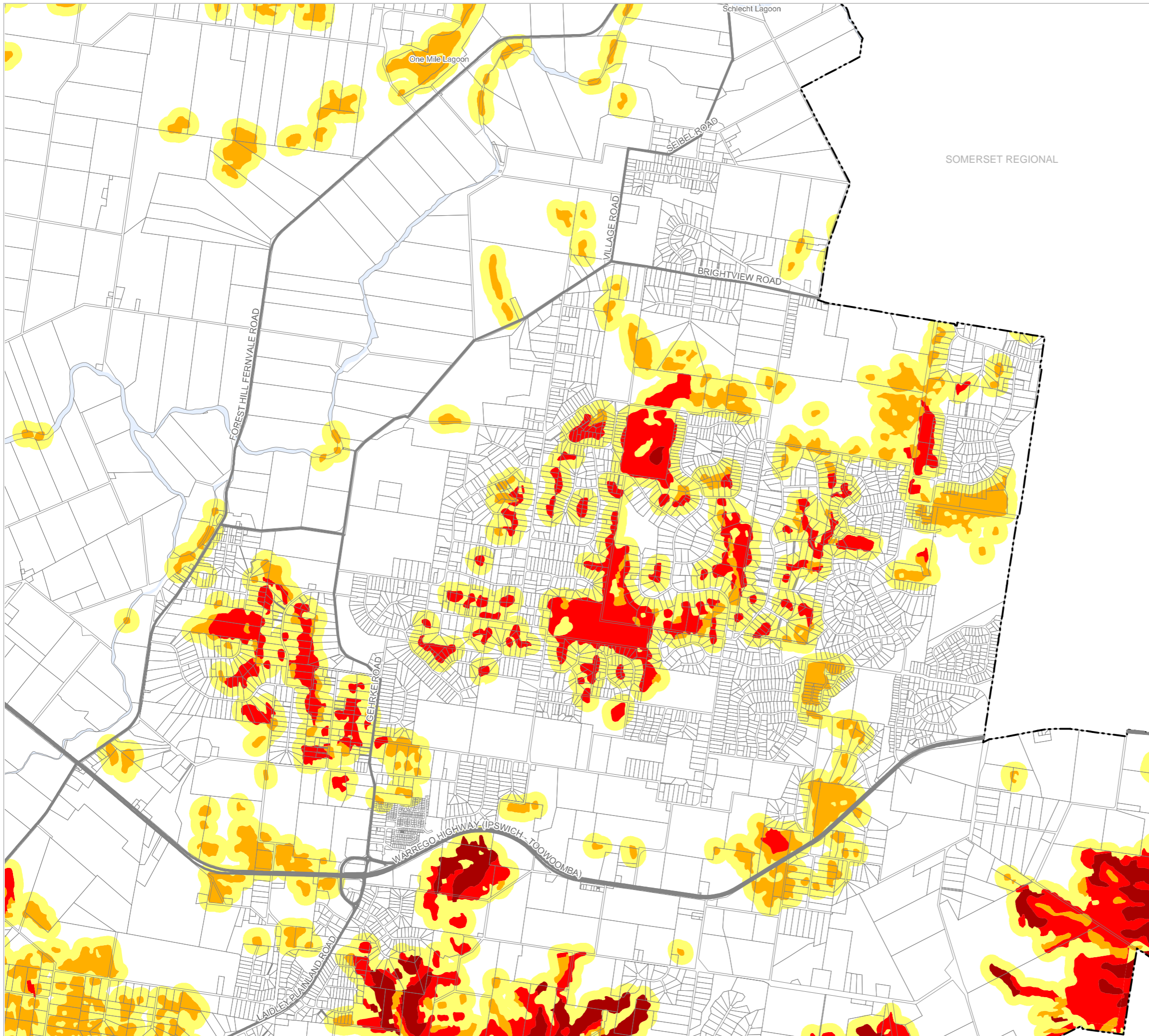


OM4 Bushfire hazard overlay Plainland - 13



REGIONAL COUNCIL

OM4 Bushfire hazard overlay map



SOMERSET REGIONAL

Bushfire Hazard

- BH1 - Very High Potential Bushfire Intensity
- BH2 - High Potential Bushfire Intensity
- BH3 - Medium Potential Bushfire Intensity
- BH4 - Potential Impact Buffer

Other Features

- Major Road
- Railway Network
- Property Boundary
- Local Government Boundary
- Watercourse or waterbody

NOTE

Refer to online or electronic mapping where layers overlap or labels obstruct the data on the map.

MAP INFORMATION

Based on or contains data sourced from the State Government which gives no warranty in relation to the data (including accuracy, reliability, completeness or suitability) and accepts no liability (including without limitation, liability in negligence) for any loss, damage or costs (including consequential damage) relating to any use of the data. © Copyright Lockyer Valley Regional Council 2024

DATA SOURCES

Cadastral data weekly - whole of State Queensland, Rail network - Queensland, Queensland roads and tracks, State controlled roads surveyed centreline - Queensland: © State of Queensland (Department of Resources) 2023. Bushfire prone area - South East Queensland: © State of Queensland (Queensland Fire and Emergency Services) 2020

Geocentric Datum of Australia (GDA2020 / MGA zone 56)



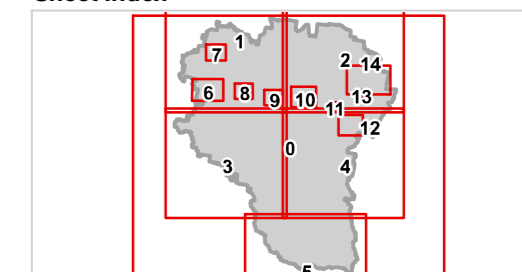
Commencement Date: 22 July 2024

Approx Scale @ A3: 1:40,000



kilometres

Sheet Index



OM4 Bushfire hazard overlay Regency Downs - 14