



REGIONAL COUNCIL

OM6 Extractive resources overlay map

Extractive resources

- Resource processing area
- Resource processing separation area
- Transport route
- Transport route separation area

Information layers

- Mining lease

Other Features

- Major Road
- Railway Network
- Property Boundary
- Local Government Boundary
- Watercourse or Waterbody

NOTES

Refer to online or electronic mapping where layers overlap or labels obstruct the data on the map.
 Details of mining tenements in the Lockyer Valley may be obtained from the Chief Executive of the Department in which the Mineral Resources Act 1989 is administered. The location of all mining claims, mineral development licences, and mining leases can be viewed on the Queensland Governments GeoResGlobe mapping website at: <https://georesglobe.information.qld.gov.au>

MAP INFORMATION

Based on or contains data sourced from the State Government which gives no warranty in relation to the data (including accuracy, reliability, completeness or suitability) and accepts no liability (including without limitation, liability in negligence) for any loss, damage or costs (including consequential damage) relating to any use of the data.
 © Copyright Lockyer Valley Regional Council 2024

DATA SOURCES

Cadastral data weekly - whole of State Queensland, Rail network - Queensland, Queensland roads and tracks, State controlled roads surveyed centreline - Queensland, Mining leases - Queensland, Key Resource Areas - Queensland: © State of Queensland (Department of Resources) 2024.

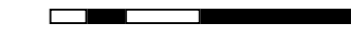
Geocentric Datum of Australia (GDA2020 / MGA zone 56)



Commencement Date: 22 July 2024

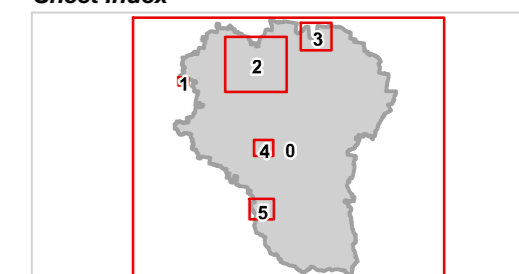
Approx Scale @ A3: 1:250,000

0 10

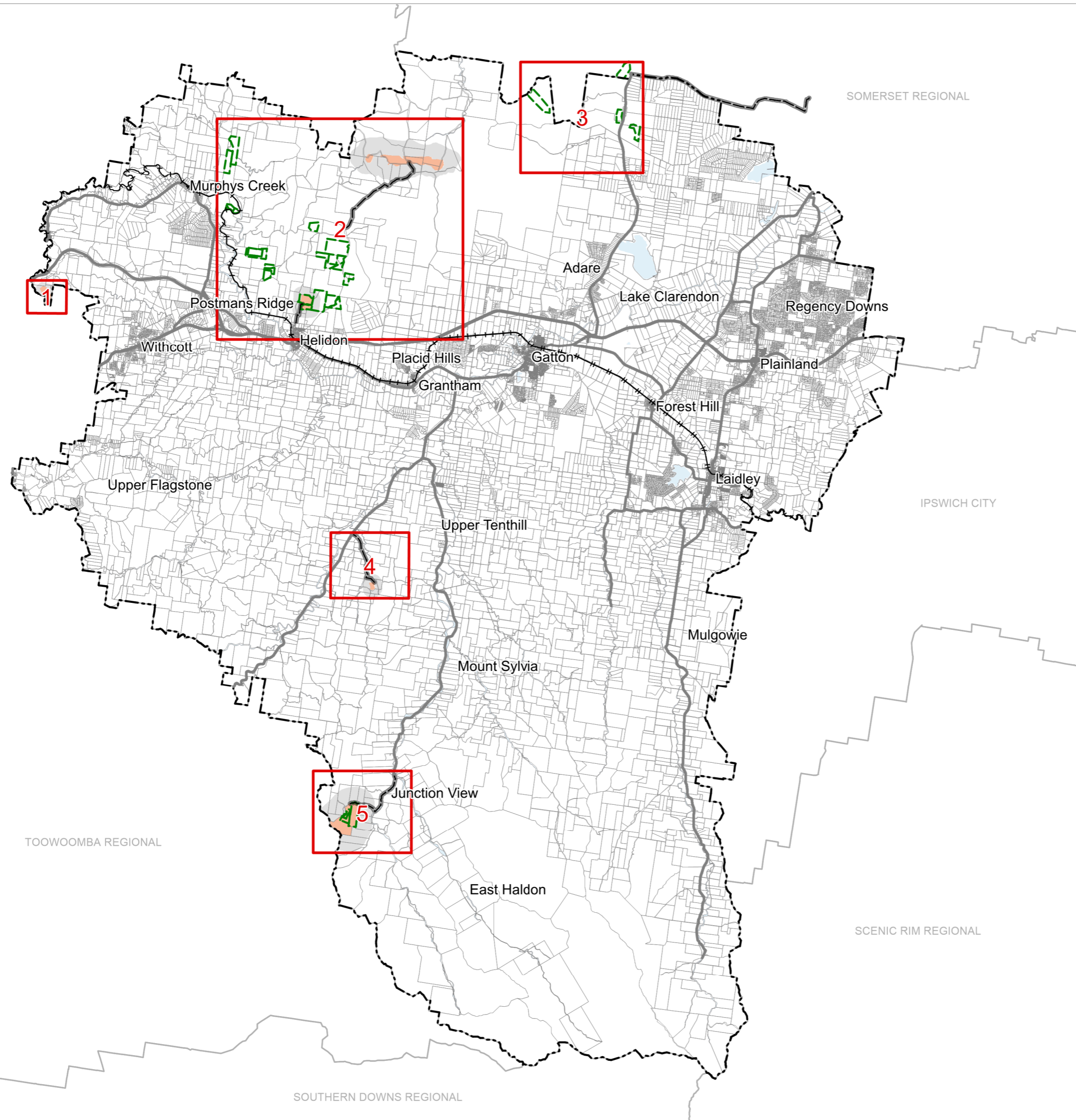


kilometres

Sheet Index



OM6 Extractive resources overlay Index - 00



SOMERSET REGIONAL

IPSWICH CITY

TOOWOOMBA REGIONAL

SCENIC RIM REGIONAL

SOUTHERN DOWNS REGIONAL



Lockyer Valley Regional Council Planning Scheme

REGIONAL COUNCIL

OM6 Extractive resources overlay map

Extractive resources

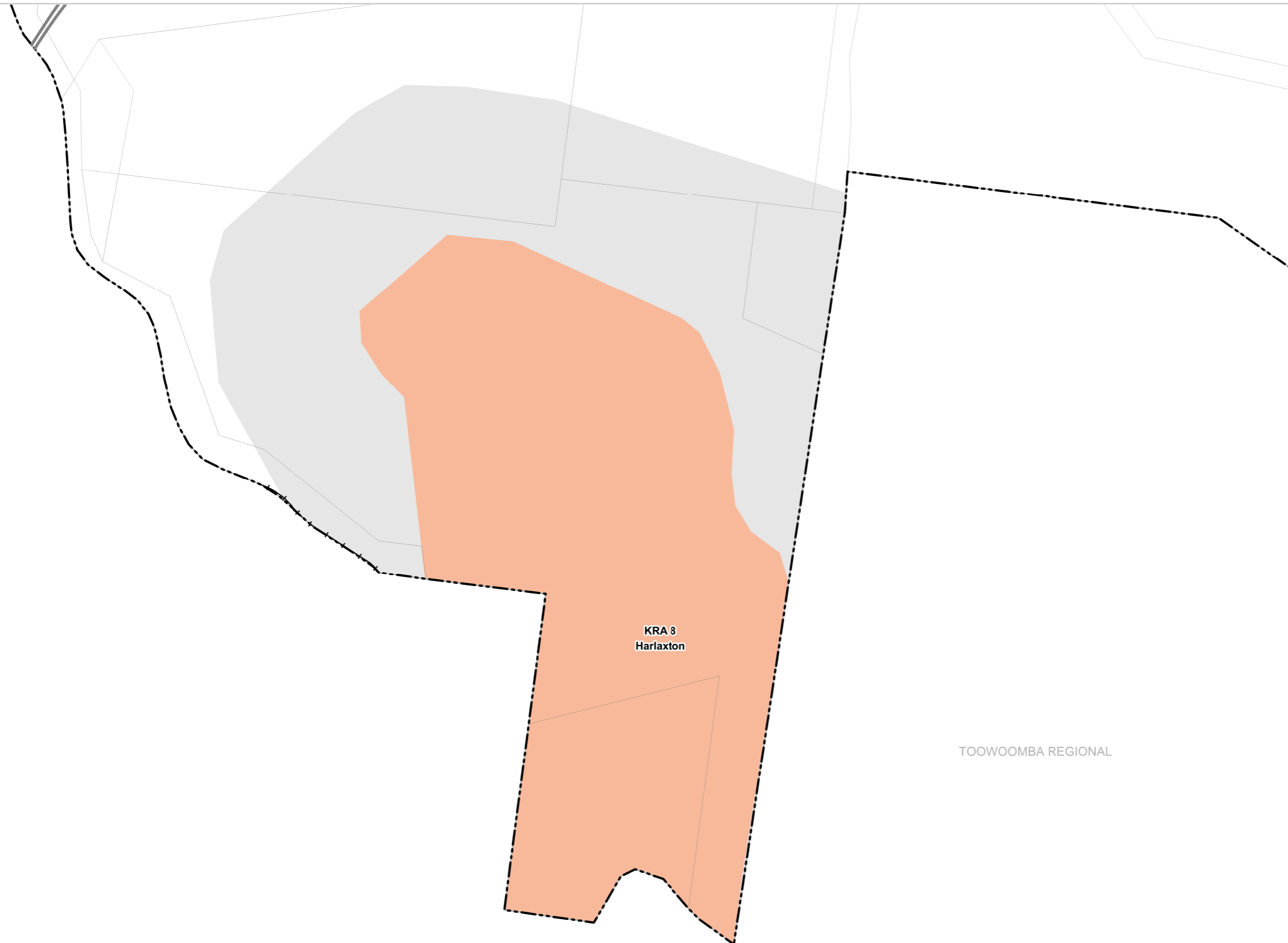
- Resource processing area
- Resource processing separation area
- Transport route
- Transport route separation area

Information layers

- Mining lease

Other Features

- Major Road
- Railway Network
- Property Boundary
- Local Government Boundary
- Watercourse or Waterbody



NOTES

Refer to online or electronic mapping where layers overlap or labels obstruct the data on the map.
 Details of mining tenements in the Lockyer Valley may be obtained from the Chief Executive of the Department in which the Mineral Resources Act 1989 is administered. The location of all mining claims, mineral development licences, and mining leases can be viewed on the Queensland Governments GeoResGlobe mapping website at: <https://georesglobe.information.qld.gov.au>

MAP INFORMATION

Based on or contains data sourced from the State Government which gives no warranty in relation to the data (including accuracy, reliability, completeness or suitability) and accepts no liability (including without limitation, liability in negligence) for any loss, damage or costs (including consequential damage) relating to any use of the data.
 © Copyright Lockyer Valley Regional Council 2024

DATA SOURCES

Cadastral data weekly - whole of State Queensland, Rail network - Queensland, Queensland roads and tracks, State controlled roads surveyed centreline - Queensland, Mining leases - Queensland, Key Resource Areas - Queensland: © State of Queensland (Department of Resources) 2024.

Geocentric Datum of Australia (GDA2020 / MGA zone 56)



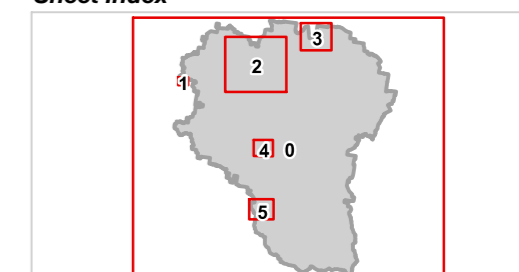
Commencement Date: 22 July 2024

Approx Scale @ A3: 1:7,500

0 0.5

kilometres

Sheet Index



OM6 Extractive resources overlay
Ballard - 01



REGIONAL COUNCIL

OM6 Extractive resources overlay map

Extractive resources

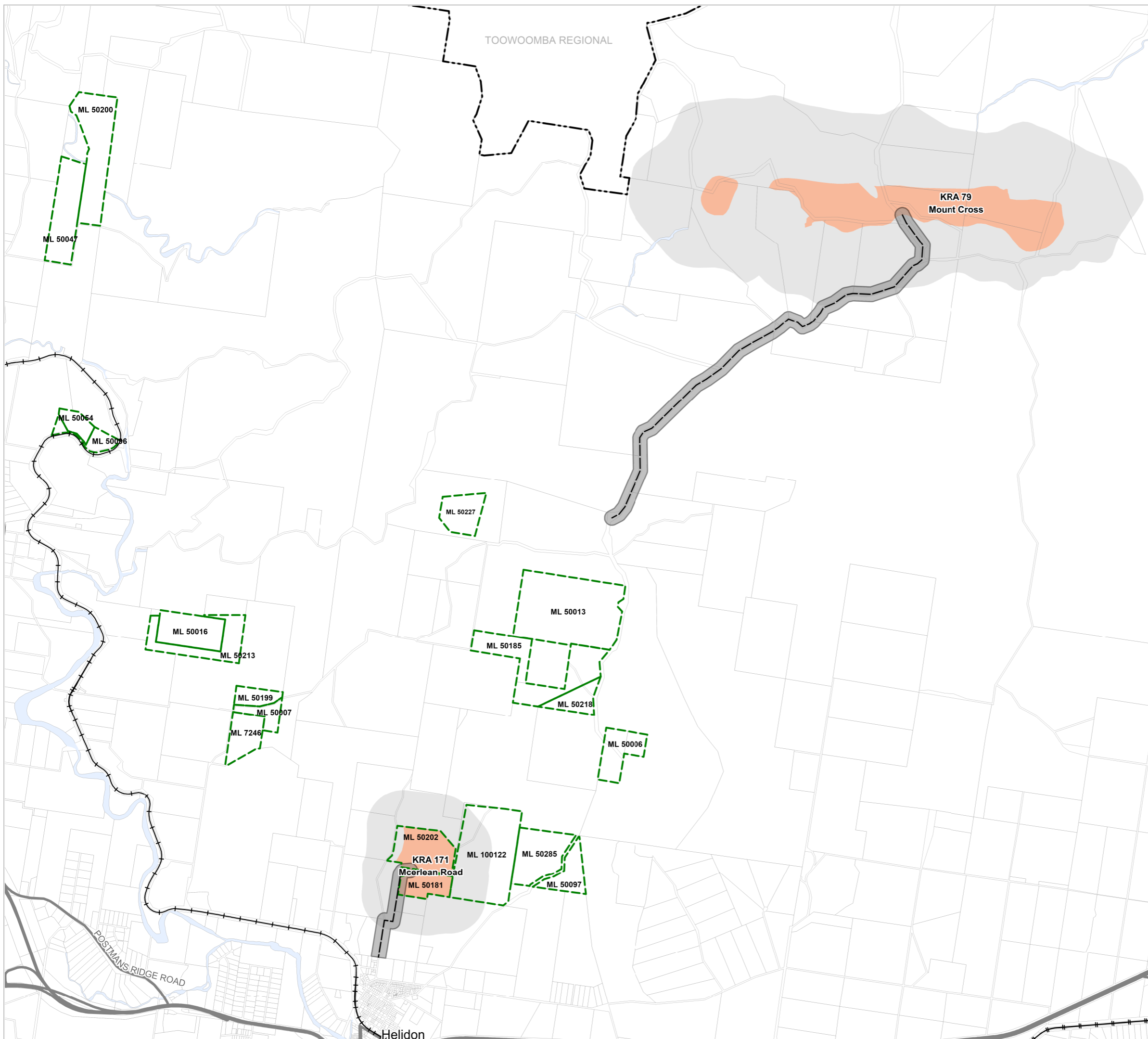
- Resource processing area
- Resource processing separation area
- Transport route
- Transport route separation area

Information layers

- Mining lease

Other Features

- Major Road
- Railway Network
- Property Boundary
- Local Government Boundary
- Watercourse or Waterbody



NOTES

Refer to online or electronic mapping where layers overlap or labels obstruct the data on the map.
 Details of mining tenements in the Lockyer Valley may be obtained from the Chief Executive of the Department in which the Mineral Resources Act 1989 is administered. The location of all mining claims, mineral development licences, and mining leases can be viewed on the Queensland Governments GeoResGlobe mapping website at: <https://georesglobe.information.qld.gov.au>

MAP INFORMATION

Based on or contains data sourced from the State Government which gives no warranty in relation to the data (including accuracy, reliability, completeness or suitability) and accepts no liability (including without limitation, liability in negligence) for any loss, damage or costs (including consequential damage) relating to any use of the data.
 © Copyright Lockyer Valley Regional Council 2024

DATA SOURCES

Cadastral data weekly - whole of State Queensland, Rail network - Queensland, Queensland roads and tracks, State controlled roads surveyed centreline - Queensland, Mining leases - Queensland, Key Resource Areas - Queensland: © State of Queensland (Department of Resources) 2024.

Geocentric Datum of Australia (GDA2020 / MGA zone 56)



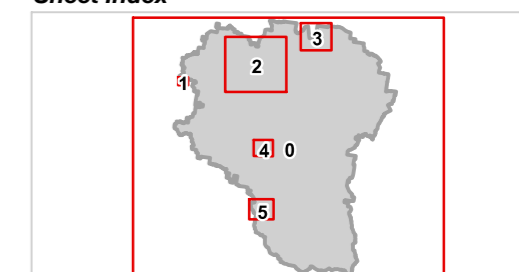
Commencement Date: 22 July 2024

Approx Scale @ A3: 1:50,000



kilometres

Sheet Index



OM6 Extractive resources overlay Seventeen Mile - 02



REGIONAL COUNCIL

OM6 Extractive resources overlay map

Extractive resources

- Resource processing area
- Resource processing separation area
- Transport route
- Transport route separation area

Information layers

- Mining lease

Other Features

- Major Road
- Railway Network
- Property Boundary
- Local Government Boundary
- Watercourse or Waterbody

NOTES

Refer to online or electronic mapping where layers overlap or labels obstruct the data on the map.
 Details of mining tenements in the Lockyer Valley may be obtained from the Chief Executive of the Department in which the Mineral Resources Act 1989 is administered. The location of all mining claims, mineral development licences, and mining leases can be viewed on the Queensland Governments GeoResGlobe mapping website at: <https://georesglobe.information.qld.gov.au>

MAP INFORMATION

Based on or contains data sourced from the State Government which gives no warranty in relation to the data (including accuracy, reliability, completeness or suitability) and accepts no liability (including without limitation, liability in negligence) for any loss, damage or costs (including consequential damage) relating to any use of the data.
 © Copyright Lockyer Valley Regional Council 2024

DATA SOURCES

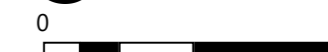
Cadastral data weekly - whole of State Queensland, Rail network - Queensland, Queensland roads and tracks, State controlled roads surveyed centreline - Queensland, Mining leases - Queensland, Key Resource Areas - Queensland: © State of Queensland (Department of Resources) 2024.

Geocentric Datum of Australia (GDA2020 / MGA zone 56)



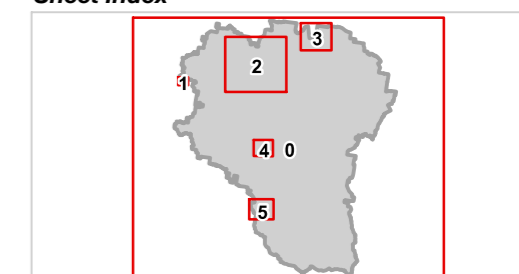
Commencement Date: 22 July 2024

Approx Scale @ A3: 1:25,000



kilometres

Sheet Index



OM6 Extractive resources overlay Spring Creek - 03

SOMERSET REGIONAL

ML 50251

KRA159
Banff Terrace

ML 50250

ML 50252

ML 50249



OM6 Extractive resources overlay map

Extractive resources

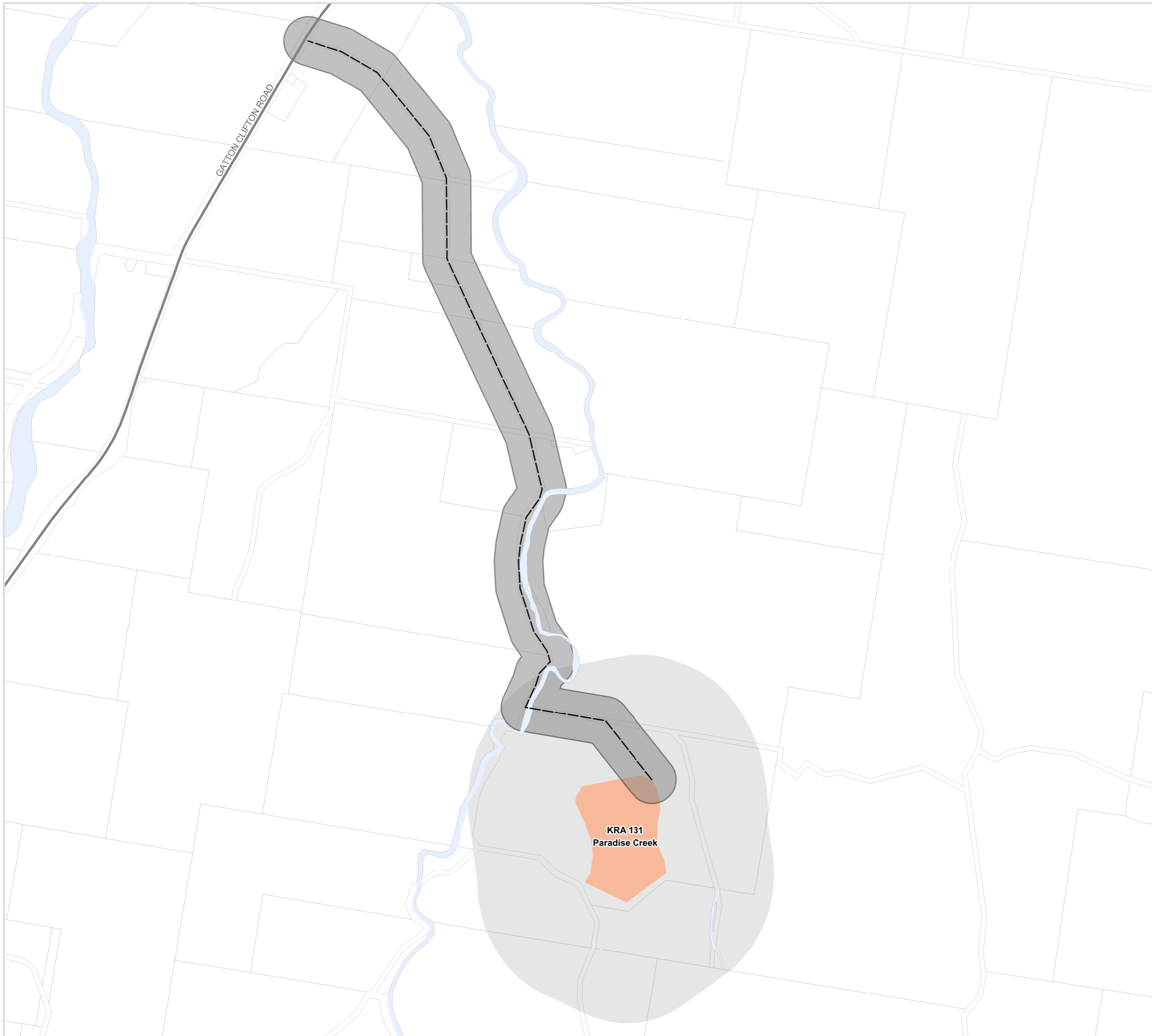
- Resource processing area
- Resource processing separation area
- Transport route
- Transport route separation area

Information layers

- Mining lease

Other Features

- Major Road
- Railway Network
- Property Boundary
- Local Government Boundary
- Watercourse or Waterbody



NOTES

Refer to online or electronic mapping where layers overlap or labels obstruct the data on the map. Details of mining tenements in the Lockyer Valley may be obtained from the Chief Executive of the Department in which the Mineral Resources Act 1989 is administered...

MAP INFORMATION

Based on or contains data sourced from the State Government which gives no warranty in relation to the data (including accuracy, reliability, completeness or suitability) and accepts no liability (including without limitation, liability in negligence) for any loss, damage or costs (including consequential damage) relating to any use of the data.

DATA SOURCES

Cadastral data weekly - whole of State Queensland, Rail network - Queensland, Queensland roads and tracks, State controlled roads surveyed centreline - Queensland, Mining leases - Queensland, Key Resource Areas - Queensland: © State of Queensland (Department of Resources) 2024.

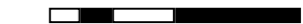
Geocentric Datum of Australia (GDA2020 / MGA zone 56)



Commencement Date: 22 July 2024

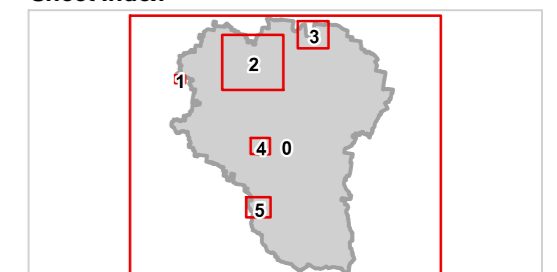
Approx Scale @ A3: 1:15,000

0 0.5



kilometres

Sheet Index





OM6 Extractive resources overlay map

Extractive resources

- Resource processing area
- Resource processing separation area
- Transport route
- Transport route separation area

Information layers

- Mining lease

Other Features

- Major Road
- Railway Network
- Property Boundary
- Local Government Boundary
- Watercourse or Waterbody

NOTES

Refer to online or electronic mapping where layers overlap or labels obstruct the data on the map.
 Details of mining tenements in the Lockyer Valley may be obtained from the Chief Executive of the Department in which the Mineral Resources Act 1989 is administered. The location of all mining claims, mineral development licences, and mining leases can be viewed on the Queensland Governments GeoResGlobe mapping website at: <https://georesglobe.information.qld.gov.au>

MAP INFORMATION

Based on or contains data sourced from the State Government which gives no warranty in relation to the data (including accuracy, reliability, completeness or suitability) and accepts no liability (including without limitation, liability in negligence) for any loss, damage or costs (including consequential damage) relating to any use of the data.
 © Copyright Lockyer Valley Regional Council 2024

DATA SOURCES

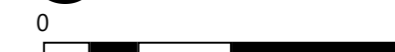
Cadastral data weekly - whole of State Queensland, Rail network - Queensland, Queensland roads and tracks, State controlled roads surveyed centreline - Queensland, Mining leases - Queensland, Key Resource Areas - Queensland: © State of Queensland (Department of Resources) 2024.

Geocentric Datum of Australia (GDA2020 / MGA zone 56)



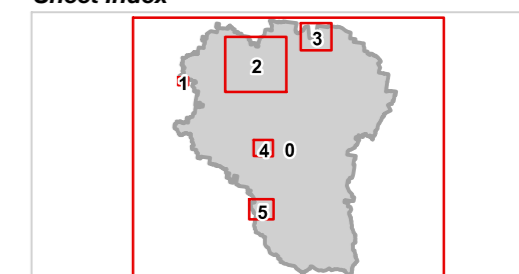
Commencement Date: 22 July 2024

Approx Scale @ A3: 1:20,000

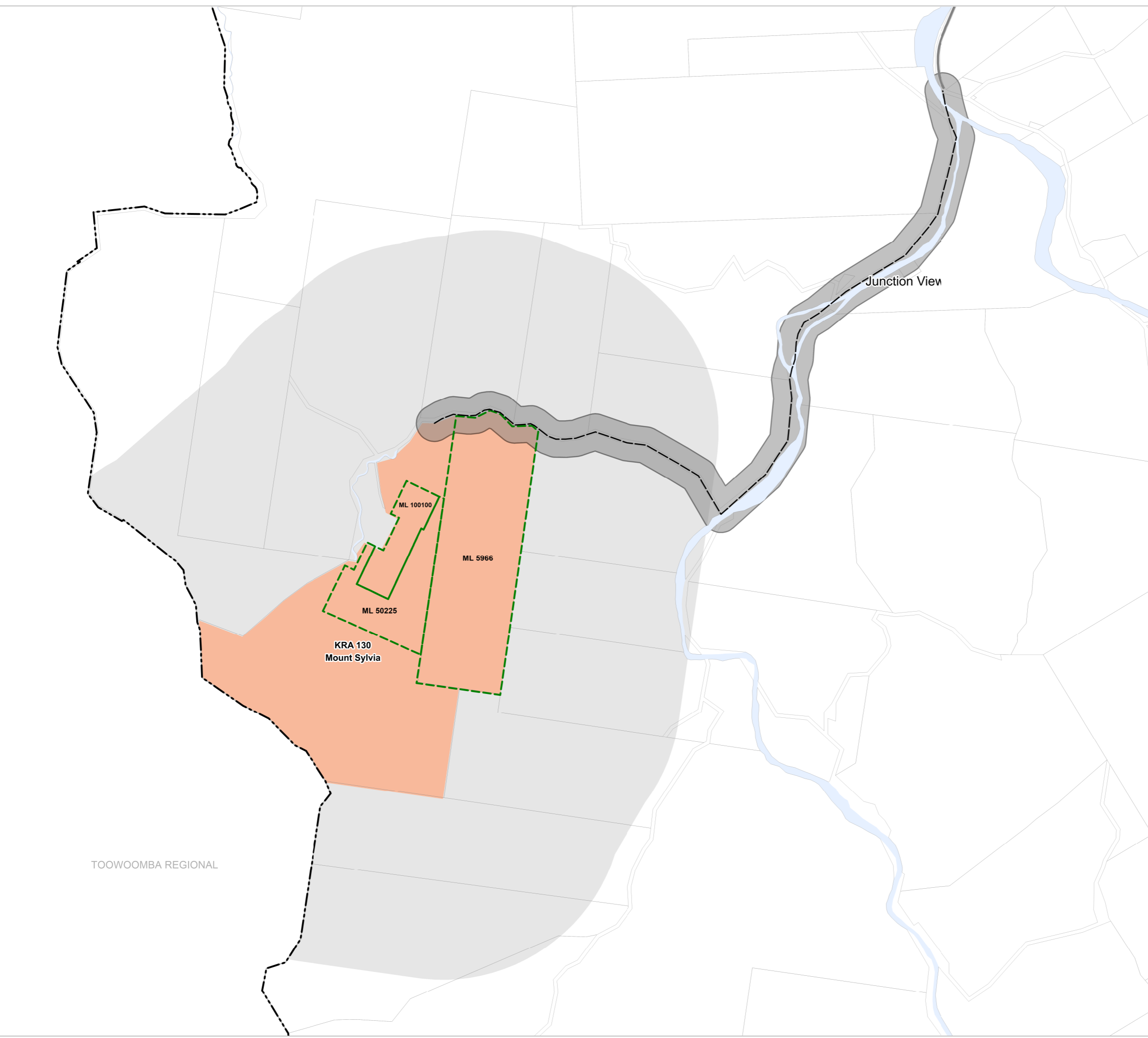


kilometres

Sheet Index



OM6 Extractive resources overlay Junction View - 05



TOOWOOMBA REGIONAL