



REGIONAL COUNCIL

OM9B Infrastructure - Emissions and Hazardous activities overlay map

Chemical facilities

- Major chemical facility
- Hazardous chemical facility
- Chemical facility separation area

Environmental emitting activities

- Emitting facility
- Emission separation area

High pressure gas pipeline

- Pipeline corridor
- High pressure gas pipeline buffer (100m)

Waste infrastructure

- Waste facility
- Waste facility buffer

Other Features

- Major road
- Railway network
- Cadastral boundary
- Local government boundary
- Watercourse / waterbody

NOTE

Refer to online or electronic mapping where layers overlap or labels obstruct the data on the map.

MAP INFORMATION

Based on or contains data sourced from the State Government which gives no warranty in relation to the data (including accuracy, reliability, completeness or suitability) and accepts no liability (including without limitation, liability in negligence) for any loss, damage or costs (including consequential damage) relating to any use of the data.

DATA SOURCES

Cadastral data weekly - whole of State Queensland, Rail network - Queensland, Queensland roads and tracks, State controlled roads surveyed centreline - Queensland: © State of Queensland (Department of Resources) 2023. High pressure gas pipeline: © Australian Pipelines and Gas Association

Geocentric Datum of Australia (GDA2020 / MGA zone 56)



Commencement Date: 22 July 2024

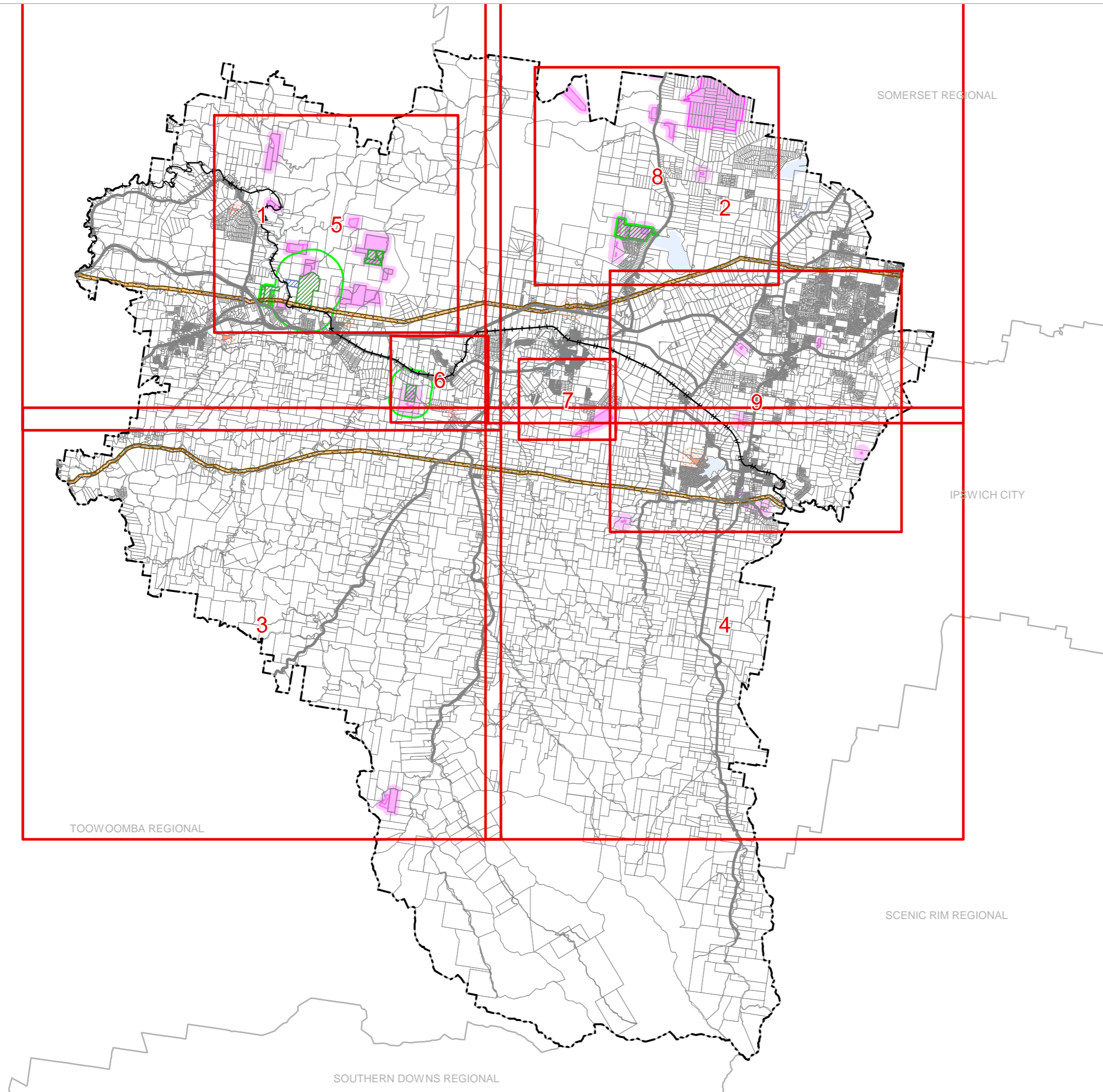
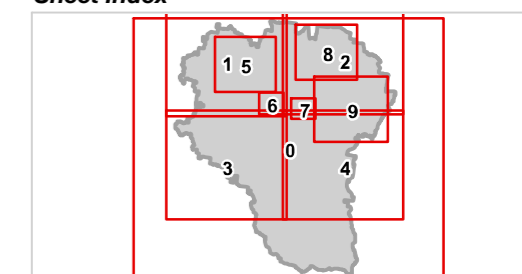
Approx Scale @ A3: 1:250,000

0 10



kilometres

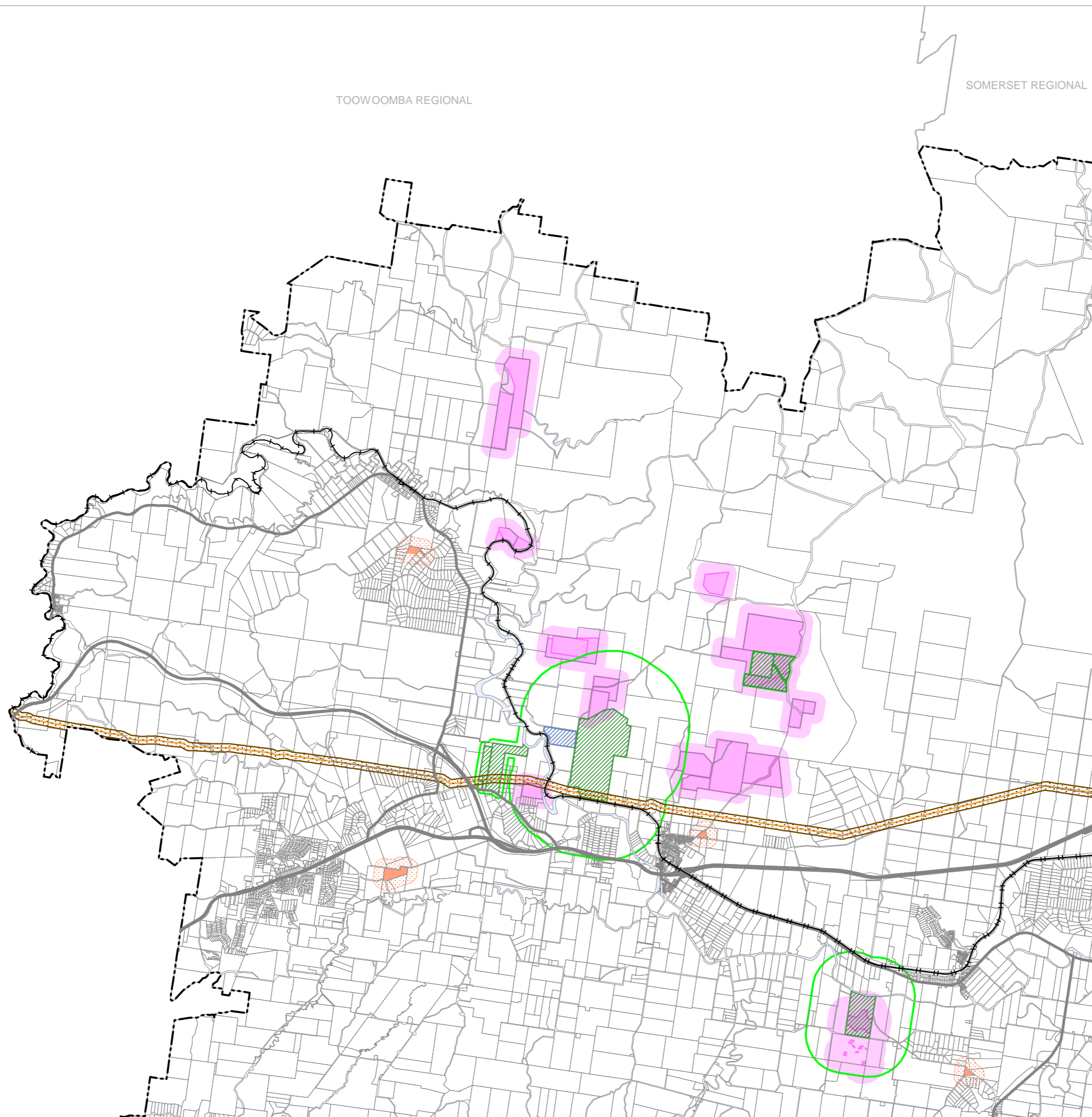
Sheet Index





REGIONAL COUNCIL

OM9B Infrastructure - Emissions and Hazardous activities overlay map



Chemical facilities

- Major chemical facility
- Hazardous chemical facility
- Chemical facility separation area

Environmental emitting activities

- Emitting facility
- Emission separation area

High pressure gas pipeline

- Pipeline corridor
- High pressure gas pipeline buffer (100m)

Waste infrastructure

- Waste facility
- Waste facility buffer

Other Features

- Major road
- Railway network
- Cadastral boundary
- Local government boundary
- Watercourse / waterbody

NOTE

Refer to online or electronic mapping where layers overlap or labels obstruct the data on the map.

MAP INFORMATION

Based on or contains data sourced from the State Government which gives no warranty in relation to the data (including accuracy, reliability, completeness or suitability) and accepts no liability (including without limitation, liability in negligence) for any loss, damage or costs (including consequential damage) relating to any use of the data.

DATA SOURCES

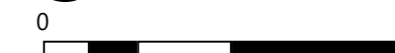
Cadastral data weekly - whole of State Queensland, Rail network - Queensland, Queensland roads and tracks, State controlled roads surveyed centreline - Queensland: © State of Queensland (Department of Resources) 2023. High pressure gas pipeline: © Australian Pipelines and Gas Association

Geocentric Datum of Australia (GDA2020 / MGA zone 56)

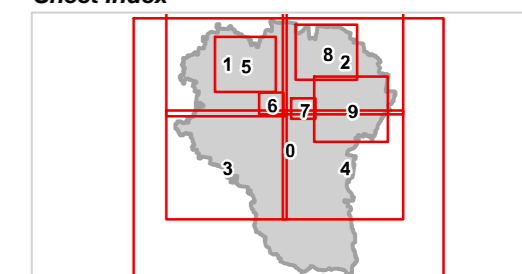


Commencement Date: 22 July 2024

Approx Scale @ A3: 1:100,000



Sheet Index

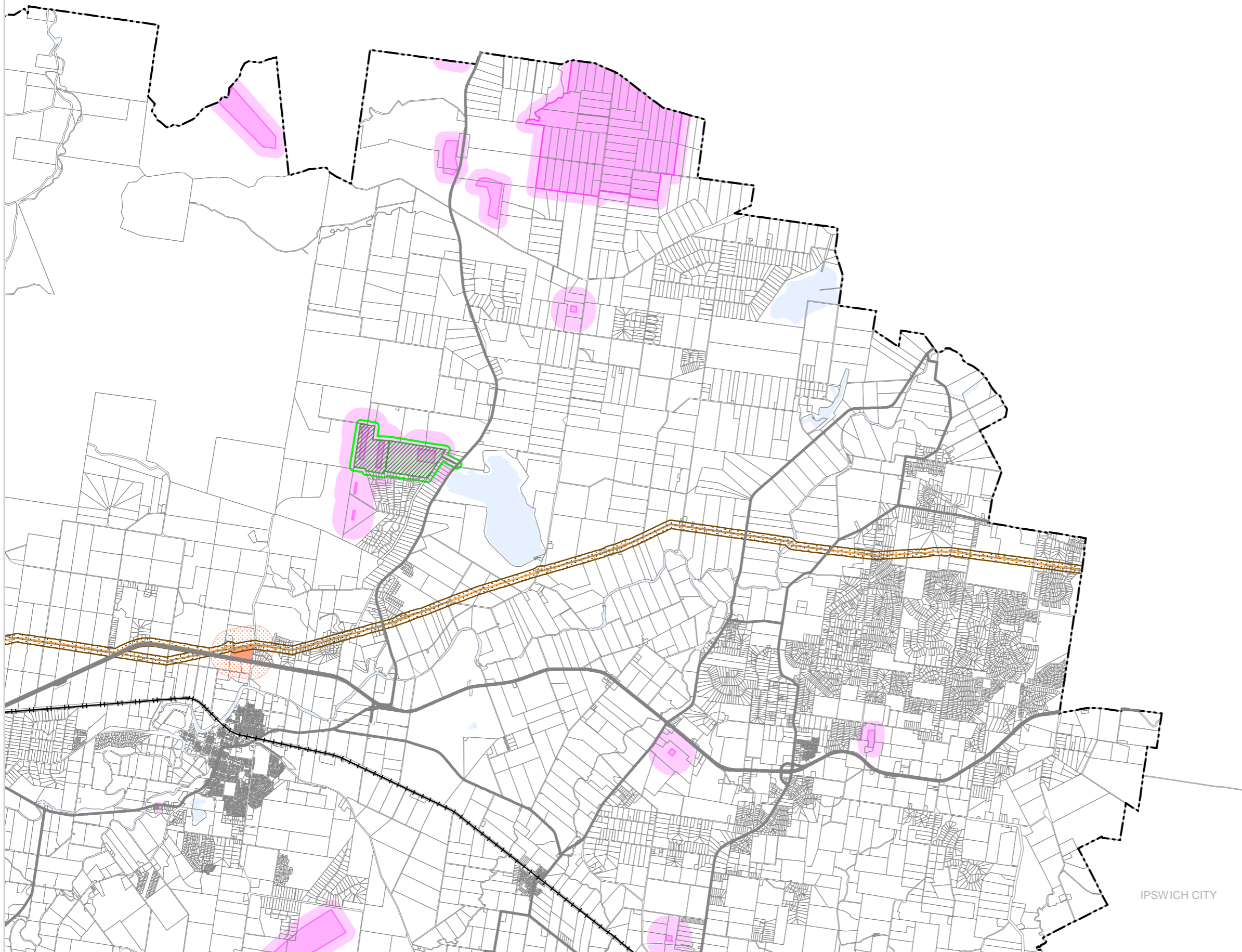




REGIONAL COUNCIL

OM9B Infrastructure - Emissions and Hazardous activities overlay map

SOMERSET REGIONAL



IPSWICH CITY

Chemical facilities

- Major chemical facility
- Hazardous chemical facility
- Chemical facility separation area

Environmental emitting activities

- Emitting facility
- Emission separation area

High pressure gas pipeline

- Pipeline corridor
- High pressure gas pipeline buffer (100m)

Waste infrastructure

- Waste facility
- Waste facility buffer

Other Features

- Major road
- Railway network
- Cadastral boundary
- Local government boundary
- Watercourse / waterbody

NOTE

Refer to online or electronic mapping where layers overlap or labels obstruct the data on the map.

MAP INFORMATION

Based on or contains data sourced from the State Government which gives no warranty in relation to the data (including accuracy, reliability, completeness or suitability) and accepts no liability (including without limitation, liability in negligence) for any loss, damage or costs (including consequential damage) relating to any use of the data.
© Copyright Lockyer Valley Regional Council 2024

DATA SOURCES

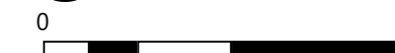
Cadastral data weekly - whole of State Queensland, Rail network - Queensland, Queensland roads and tracks, State controlled roads surveyed centreline - Queensland: © State of Queensland (Department of Resources) 2023.
High pressure gas pipeline: © Australian Pipelines and Gas Association

Geocentric Datum of Australia (GDA2020 / MGA zone 56)

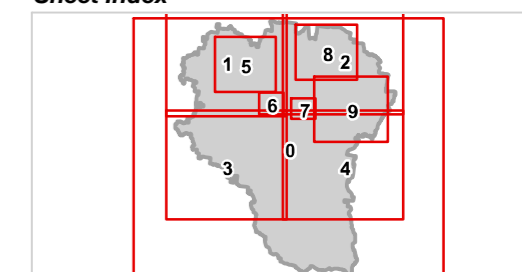


Commencement Date: 22 July 2024

Approx Scale @ A3: 1:100,000



Sheet Index





REGIONAL COUNCIL

OM9B Infrastructure - Emissions and Hazardous activities overlay map

Chemical facilities

- Major chemical facility
- Hazardous chemical facility
- Chemical facility separation area

Environmental emitting activities

- Emitting facility
- Emission separation area

High pressure gas pipeline

- Pipeline corridor
- High pressure gas pipeline buffer (100m)

Waste infrastructure

- Waste facility
- Waste facility buffer

Other Features

- Major road
- Railway network
- Cadastral boundary
- Local government boundary
- Watercourse / waterbody

NOTE

Refer to online or electronic mapping where layers overlap or labels obstruct the data on the map.

MAP INFORMATION

Based on or contains data sourced from the State Government which gives no warranty in relation to the data (including accuracy, reliability, completeness or suitability) and accepts no liability (including without limitation, liability in negligence) for any loss, damage or costs (including consequential damage) relating to any use of the data.

DATA SOURCES

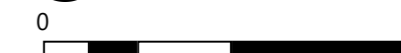
Cadastral data weekly - whole of State Queensland, Rail network - Queensland, Queensland roads and tracks, State controlled roads surveyed centreline - Queensland: © State of Queensland (Department of Resources) 2023. High pressure gas pipeline: © Australian Pipelines and Gas Association

Geocentric Datum of Australia (GDA2020 / MGA zone 56)

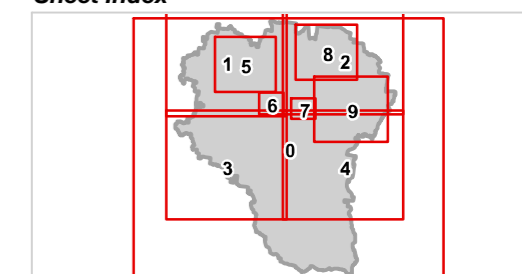


Commencement Date: 22 July 2024

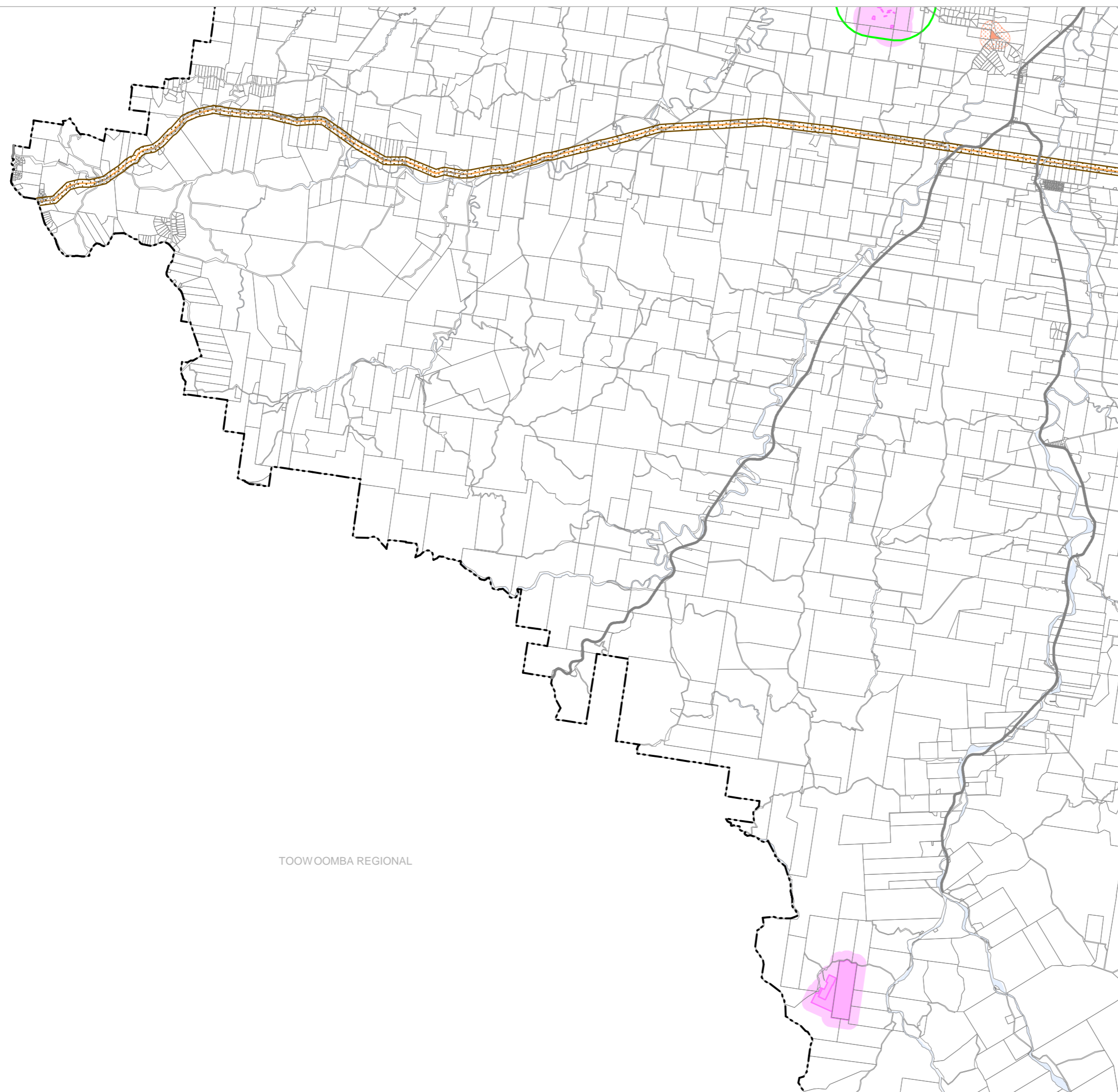
Approx Scale @ A3: 1:100,000



Sheet Index



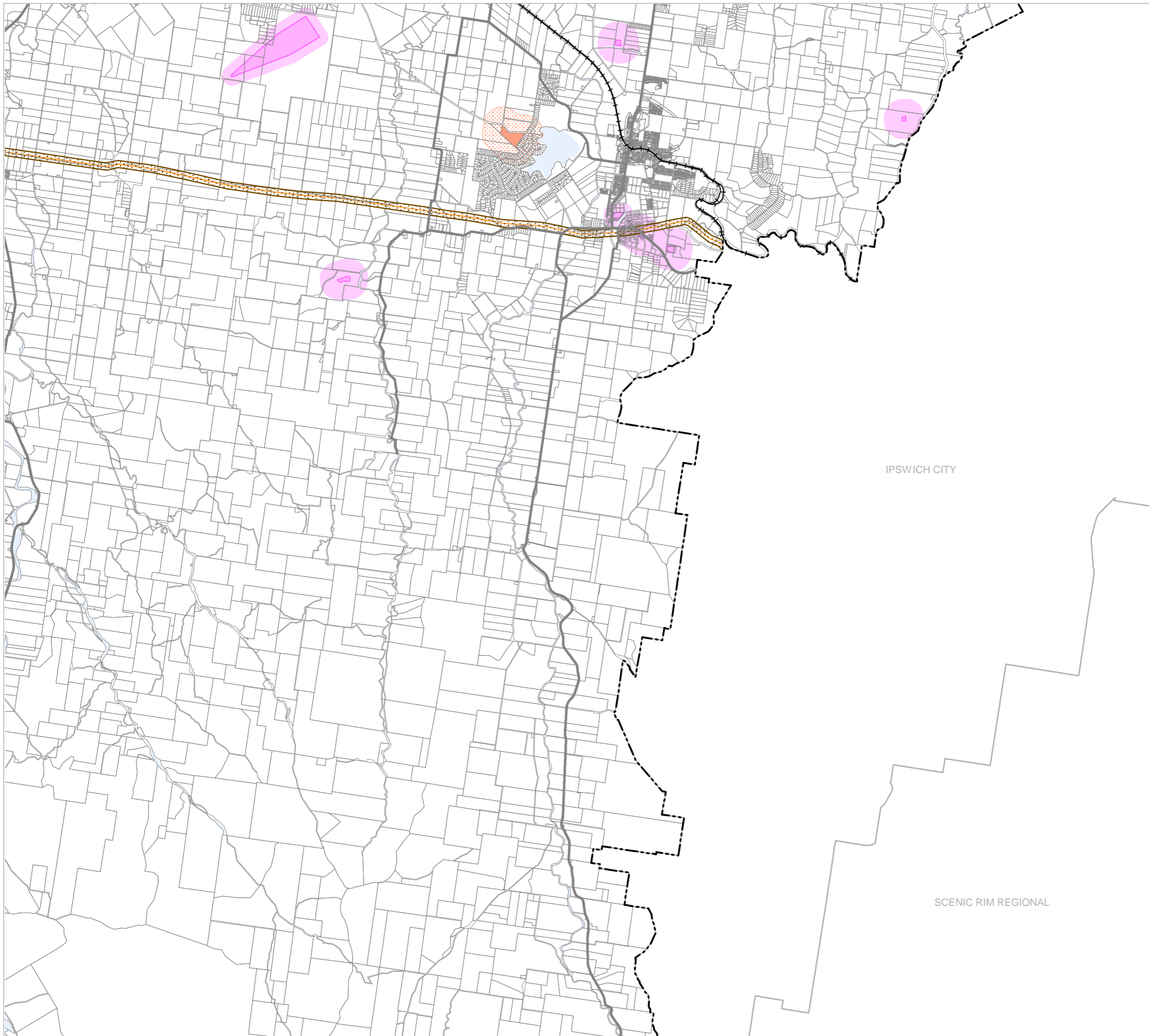
TOOWOOMBA REGIONAL





REGIONAL COUNCIL

OM9B Infrastructure - Emissions and Hazardous activities overlay map



Chemical facilities

- Major chemical facility
- Hazardous chemical facility
- Chemical facility separation area

Environmental emitting activities

- Emitting facility
- Emission separation area

High pressure gas pipeline

- Pipeline corridor
- High pressure gas pipeline buffer (100m)

Waste infrastructure

- Waste facility
- Waste facility buffer

Other Features

- Major road
- Railway network
- Cadastral boundary
- Local government boundary
- Watercourse / waterbody

IPSWICH CITY

SCENIC RIM REGIONAL

NOTE

Refer to online or electronic mapping where layers overlap or labels obstruct the data on the map.

MAP INFORMATION

Based on or contains data sourced from the State Government which gives no warranty in relation to the data (including accuracy, reliability, completeness or suitability) and accepts no liability (including without limitation, liability in negligence) for any loss, damage or costs (including consequential damage) relating to any use of the data.
© Copyright Lockyer Valley Regional Council 2024

DATA SOURCES

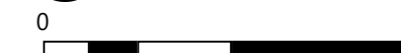
Cadastral data weekly - whole of State Queensland, Rail network - Queensland, Queensland roads and tracks, State controlled roads surveyed centreline - Queensland: © State of Queensland (Department of Resources) 2023.
High pressure gas pipeline: © Australian Pipelines and Gas Association

Geocentric Datum of Australia (GDA2020 / MGA zone 56)

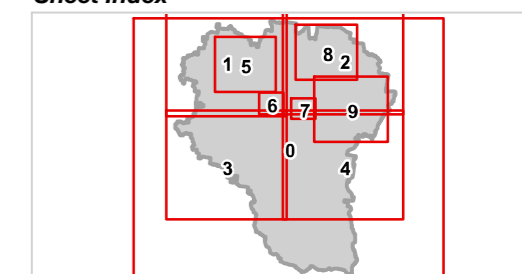


Commencement Date: 22 July 2024

Approx Scale @ A3: 1:100,000



Sheet Index





REGIONAL COUNCIL

OM9B Infrastructure - Emissions and Hazardous activities overlay map

Chemical facilities

- Major chemical facility
- Hazardous chemical facility
- Chemical facility separation area

Environmental emitting activities

- Emitting facility
- Emission separation area

High pressure gas pipeline

- Pipeline corridor
- High pressure gas pipeline buffer (100m)

Waste infrastructure

- Waste facility
- Waste facility buffer

Other Features

- Major road
- Railway network
- Cadastral boundary
- Local government boundary
- Watercourse / waterbody

NOTE

Refer to online or electronic mapping where layers overlap or labels obstruct the data on the map.

MAP INFORMATION

Based on or contains data sourced from the State Government which gives no warranty in relation to the data (including accuracy, reliability, completeness or suitability) and accepts no liability (including without limitation, liability in negligence) for any loss, damage or costs (including consequential damage) relating to any use of the data.

DATA SOURCES

Cadastral data weekly - whole of State Queensland, Rail network - Queensland, Queensland roads and tracks, State controlled roads surveyed centreline - Queensland, © State of Queensland (Department of Resources) 2023, High pressure gas pipeline: © Australian Pipelines and Gas Association

Geocentric Datum of Australia (GDA2020 / MGA zone 56)



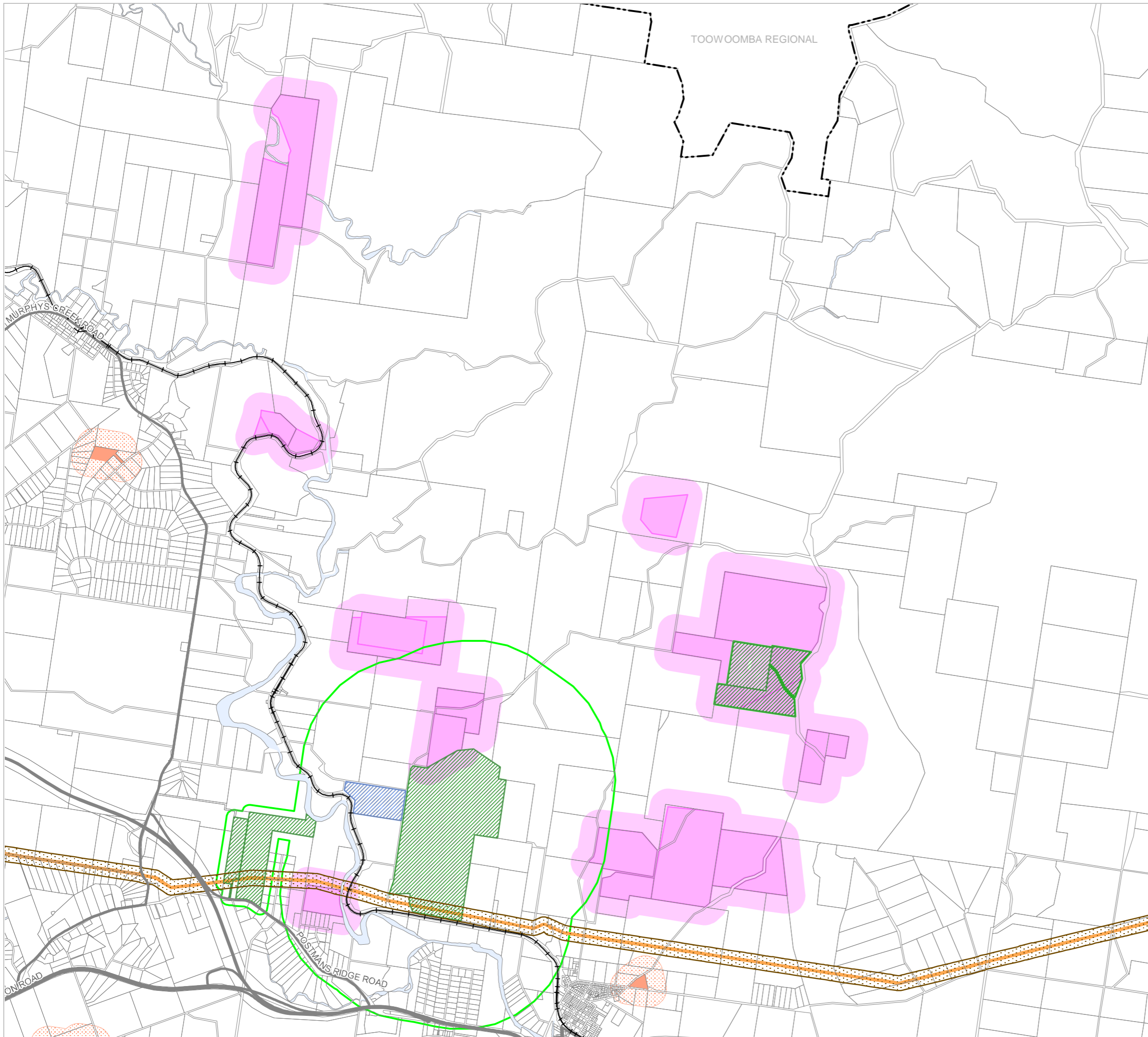
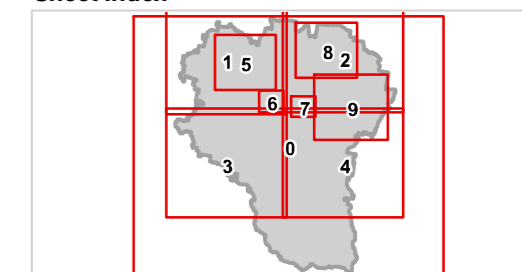
Commencement Date: 22 July 2024

Approx Scale @ A3: 1:50,000

0 2.5

kilometres

Sheet Index



TOOWOOMBA REGIONAL

MURPHYS CREEK ROAD

ONROAD

POSTMANS RIDGE ROAD



REGIONAL COUNCIL

OM9B Infrastructure - Emissions and Hazardous activities overlay map

Chemical facilities

- Major chemical facility
- Hazardous chemical facility
- Chemical facility separation area

Environmental emitting activities

- Emitting facility
- Emission separation area

High pressure gas pipeline

- Pipeline corridor
- High pressure gas pipeline buffer (100m)

Waste infrastructure

- Waste facility
- Waste facility buffer

Other Features

- Major road
- Railway network
- Cadastral boundary
- Local government boundary
- Watercourse / waterbody

NOTE

Refer to online or electronic mapping where layers overlap or labels obstruct the data on the map.

MAP INFORMATION

Based on or contains data sourced from the State Government which gives no warranty in relation to the data (including accuracy, reliability, completeness or suitability) and accepts no liability (including without limitation, liability in negligence) for any loss, damage or costs (including consequential damage) relating to any use of the data.

DATA SOURCES

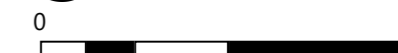
Cadastral data weekly - whole of State Queensland, Rail network - Queensland, Queensland roads and tracks, State controlled roads surveyed centreline - Queensland: © State of Queensland (Department of Resources) 2023. High pressure gas pipeline: © Australian Pipelines and Gas Association

Geocentric Datum of Australia (GDA2020 / MGA zone 56)



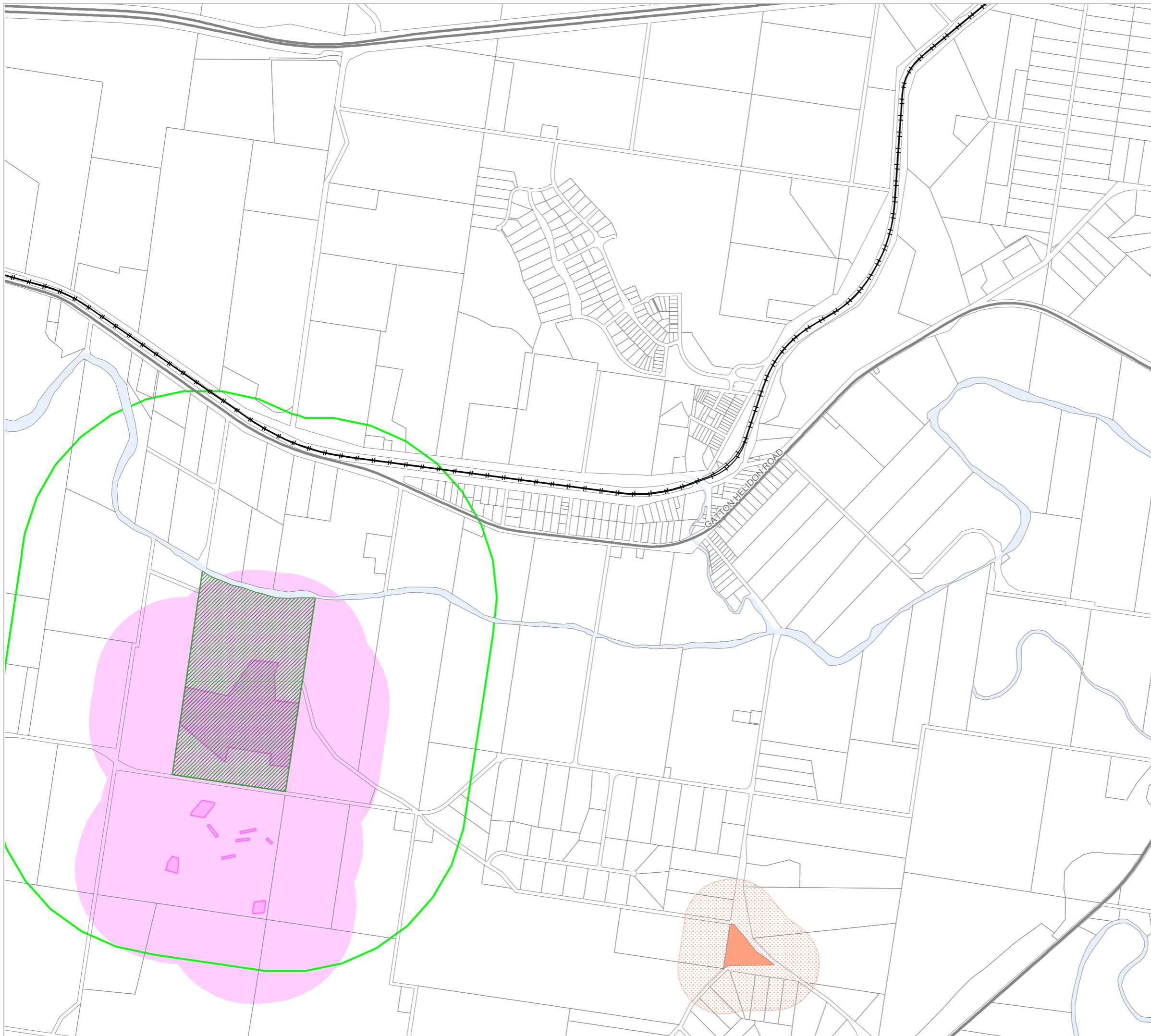
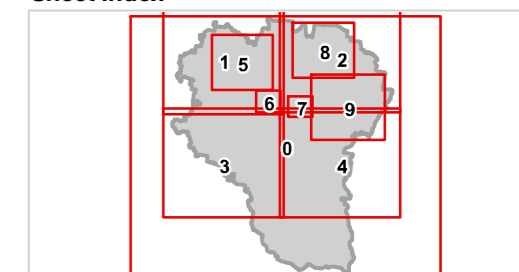
Commencement Date: 22 July 2024

Approx Scale @ A3: 1:20,000



kilometres

Sheet Index





REGIONAL COUNCIL

OM9B Infrastructure - Emissions and Hazardous activities overlay map

Chemical facilities

- Major chemical facility
- Hazardous chemical facility
- Chemical facility separation area

Environmental emitting activities

- Emitting facility
- Emission separation area

High pressure gas pipeline

- Pipeline corridor
- High pressure gas pipeline buffer (100m)

Waste infrastructure

- Waste facility
- Waste facility buffer

Other Features

- Major road
- Railway network
- Cadastral boundary
- Local government boundary
- Watercourse / waterbody

NOTE

Refer to online or electronic mapping where layers overlap or labels obstruct the data on the map.

MAP INFORMATION

Based on or contains data sourced from the State Government which gives no warranty in relation to the data (including accuracy, reliability, completeness or suitability) and accepts no liability (including without limitation, liability in negligence) for any loss, damage or costs (including consequential damage) relating to any use of the data.
© Copyright Lockyer Valley Regional Council 2024

DATA SOURCES

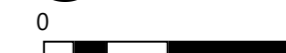
Cadastral data weekly - whole of State Queensland, Rail network - Queensland, Queensland roads and tracks, State controlled roads surveyed centreline - Queensland: © State of Queensland (Department of Resources) 2023.
High pressure gas pipeline: © Australian Pipelines and Gas Association

Geocentric Datum of Australia (GDA2020 / MGA zone 56)



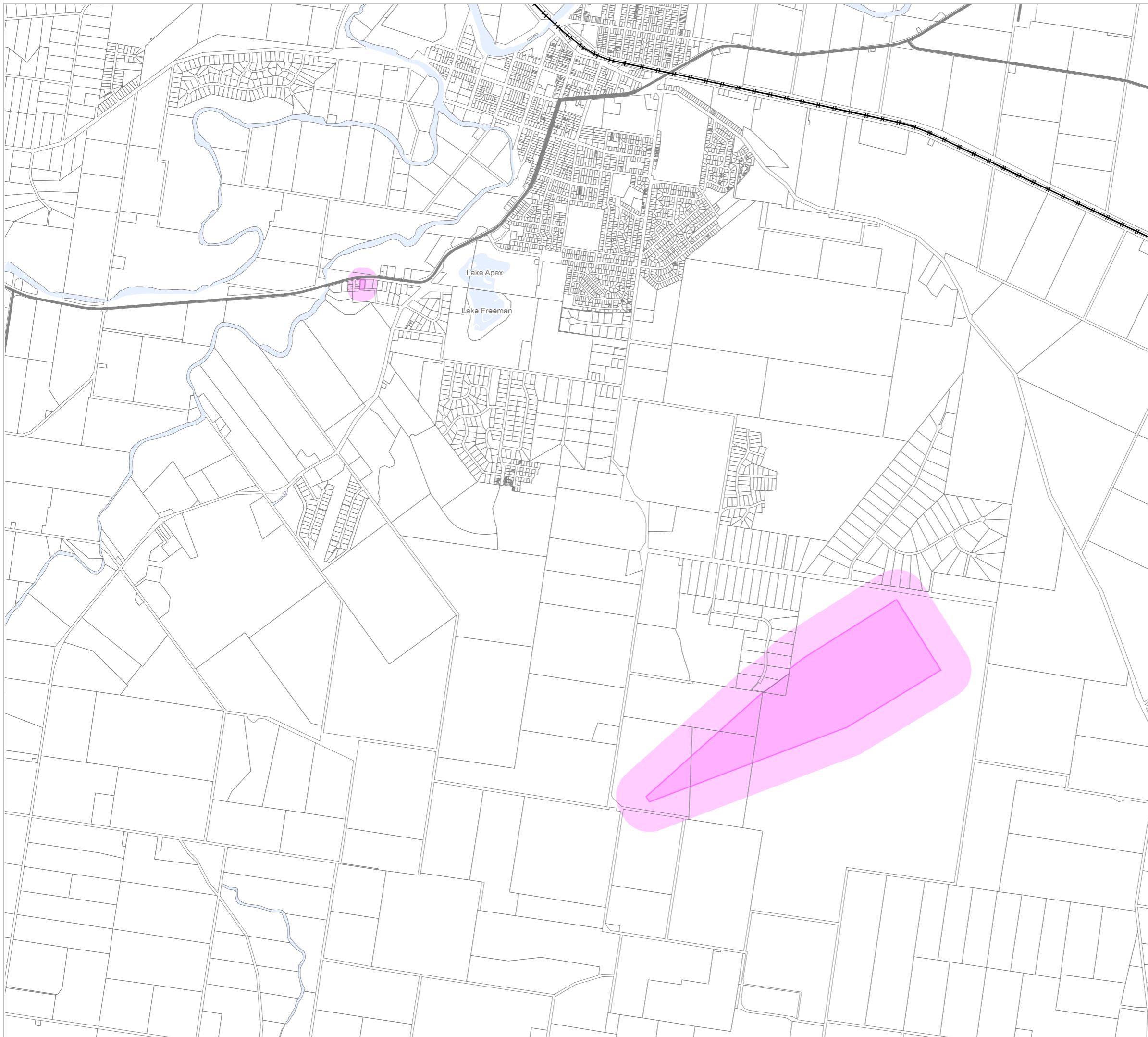
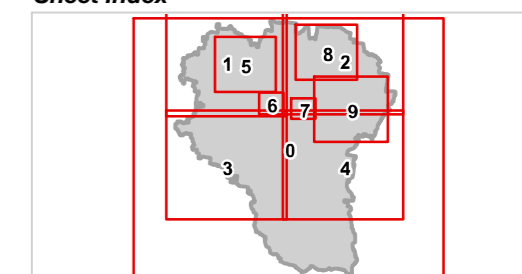
Commencement Date: 22 July 2024

Approx Scale @ A3: 1:30,000



kilometres

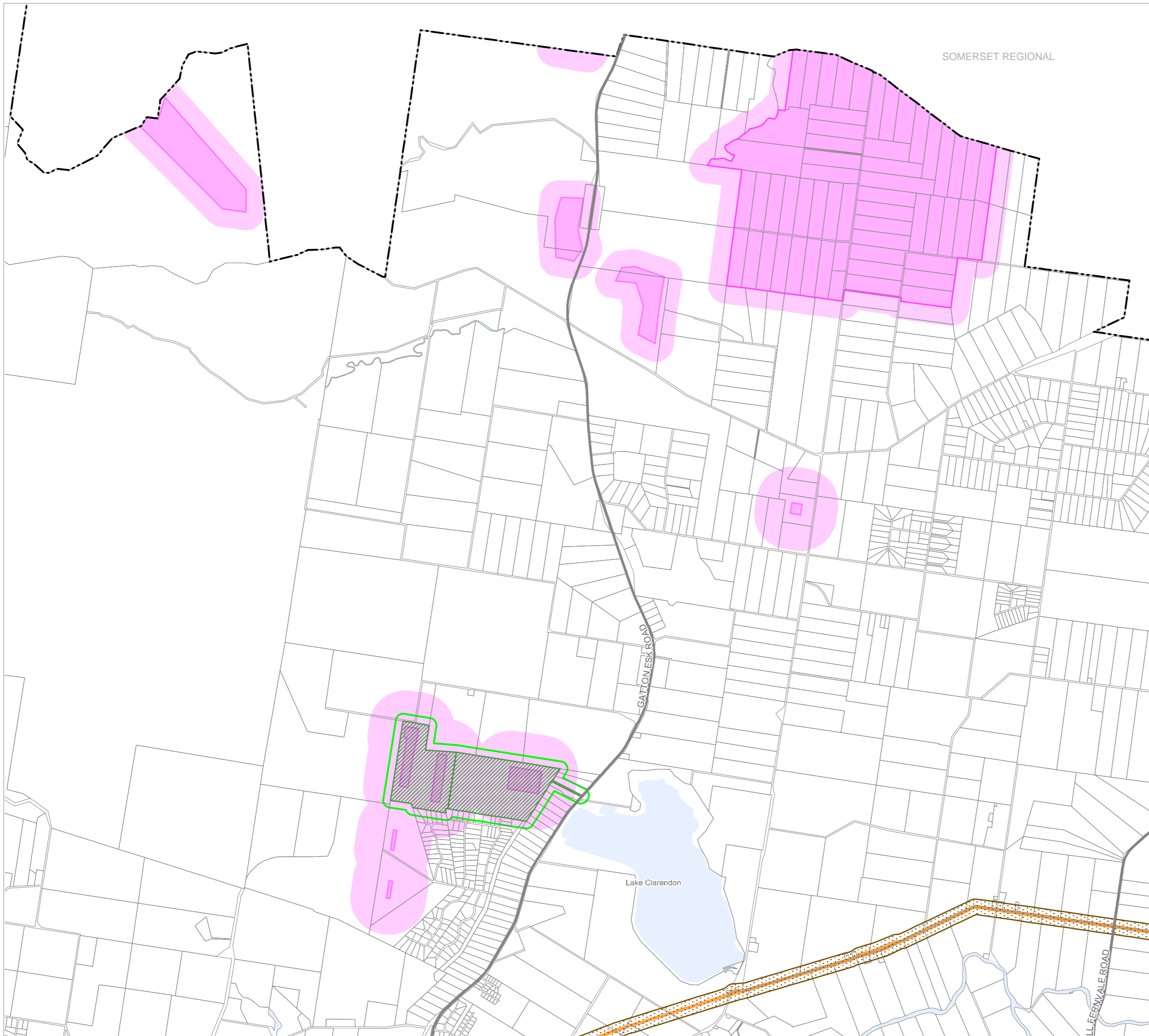
Sheet Index





REGIONAL COUNCIL

OM9B Infrastructure - Emissions and Hazardous activities overlay map



Chemical facilities

- Major chemical facility
- Hazardous chemical facility
- Chemical facility separation area

Environmental emitting activities

- Emitting facility
- Emission separation area

High pressure gas pipeline

- Pipeline corridor
- High pressure gas pipeline buffer (100m)

Waste infrastructure

- Waste facility
- Waste facility buffer

Other Features

- Major road
- Railway network
- Cadastral boundary
- Local government boundary
- Watercourse / waterbody

NOTE

Refer to online or electronic mapping where layers overlap or labels obstruct the data on the map.

MAP INFORMATION

Based on or contains data sourced from the State Government which gives no warranty in relation to the data (including accuracy, reliability, completeness or suitability) and accepts no liability (including without limitation, liability in negligence) for any loss, damage or costs (including consequential damage) relating to any use of the data.

DATA SOURCES

Cadastral data weekly - whole of State Queensland, Rail network - Queensland, Queensland roads and tracks, State controlled roads surveyed centreline - Queensland: © State of Queensland (Department of Resources) 2023. High pressure gas pipeline: © Australian Pipelines and Gas Association

Geocentric Datum of Australia (GDA2020 / MGA zone 56)



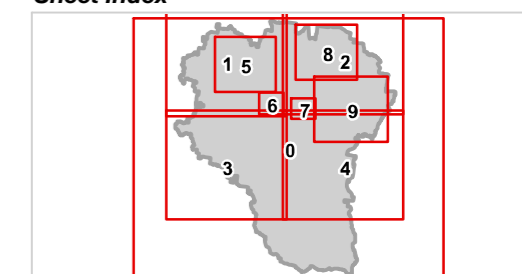
Commencement Date: 22 July 2024

Approx Scale @ A3: 1:50,000

0 2.5

kilometres

Sheet Index





REGIONAL COUNCIL

OM9B Infrastructure - Emissions and Hazardous activities overlay map

Chemical facilities

- Major chemical facility
- Hazardous chemical facility
- Chemical facility separation area

Environmental emitting activities

- Emitting facility
- Emission separation area

High pressure gas pipeline

- Pipeline corridor
- High pressure gas pipeline buffer (100m)

Waste infrastructure

- Waste facility
- Waste facility buffer

Other Features

- Major road
- Railway network
- Cadastral boundary
- Local government boundary
- Watercourse / waterbody

NOTE

Refer to online or electronic mapping where layers overlap or labels obstruct the data on the map.

MAP INFORMATION

Based on or contains data sourced from the State Government which gives no warranty in relation to the data (including accuracy, reliability, completeness or suitability) and accepts no liability (including without limitation, liability in negligence) for any loss, damage or costs (including consequential damage) relating to any use of the data.

DATA SOURCES

Cadastral data weekly - whole of State Queensland, Rail network - Queensland, Queensland roads and tracks, State controlled roads surveyed centreline - Queensland, © State of Queensland (Department of Resources) 2023, High pressure gas pipeline: © Australian Pipelines and Gas Association

Geocentric Datum of Australia (GDA2020 / MGA zone 56)



Commencement Date: 22 July 2024

Approx Scale @ A3: 1:60,000

0 2.5



kilometres

Sheet Index

