



# Lockyer Valley Regional Council Planning Scheme

## SFM3 Strategic Framework - Connecting Infrastructure map

**Connecting Infrastructure**

**Land use**

- Urban areas
- Rural residential areas
- Rural areas
- Natural areas

**Existing**

- Existing Substation
- Gas pipeline
- Major electricity infrastructure
- State-controlled road
- Principal cycle network
- Sewerage treatment plant
- Waste facility
- Water supply dam

**Commercial centres**

- Principal rural centre
- Major rural centre
- Local centre
- Township
- Rural Hamlet

**Future**

- Future Substation
- Rail corridor
- Motorway
- Interchange

**Other Features**

- Major Road
- Railway Network
- Local Government Boundary
- Watercourse / Waterbody

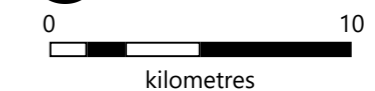
**NOTE**  
Refer to online or electronic mapping where layers overlap or labels obstruct the data on the map.

**MAP INFORMATION**  
Based on or contains data sourced from the State Government which gives no warranty in relation to the data (including accuracy, reliability, completeness or suitability) and accepts no liability (including without limitation, liability in negligence) for any loss, damage or costs (including consequential damage) relating to any use of the data.  
© Copyright Lockyer Valley Regional Council 2024

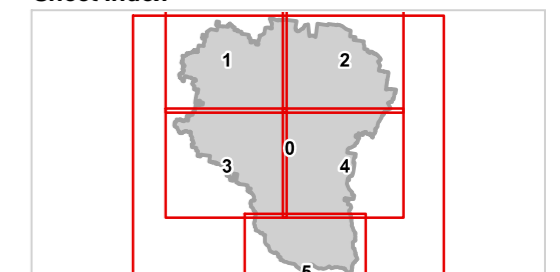
**DATA SOURCES**  
Rail network - Queensland, Baseline roads and tracks - Queensland: © State of Queensland (Department of Natural Resources, Mines and Energy) 2020, State controlled roads - Queensland, Principal Cycle Network - Queensland: © State of Queensland (Department of Transport and Main Roads) 2023.  
Geocentric Datum of Australia (GDA2020 / MGA zone 56)

Commencement Date: 22 July 2024

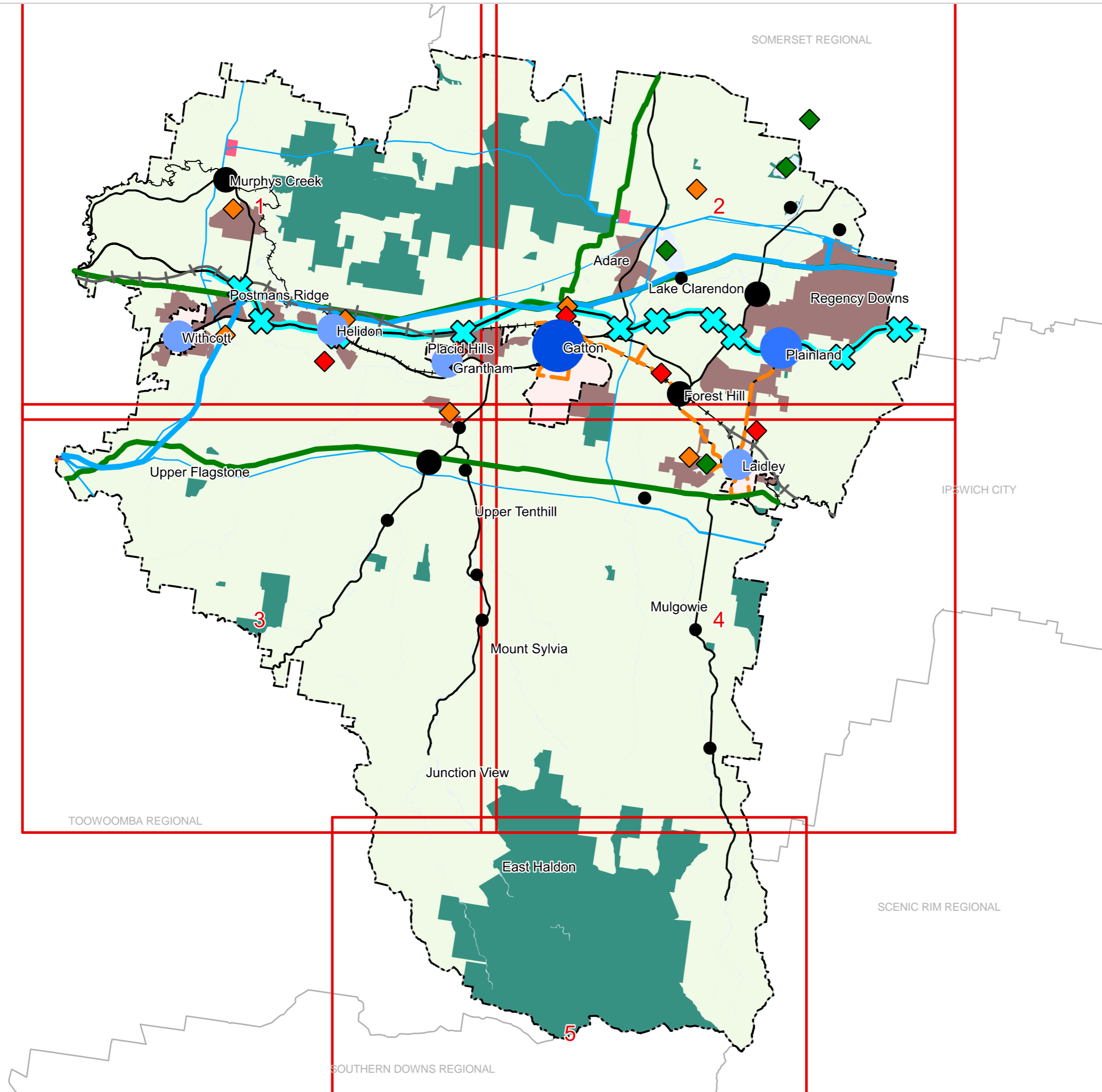
Approx Scale @ A3: 1:250,000



### Sheet Index



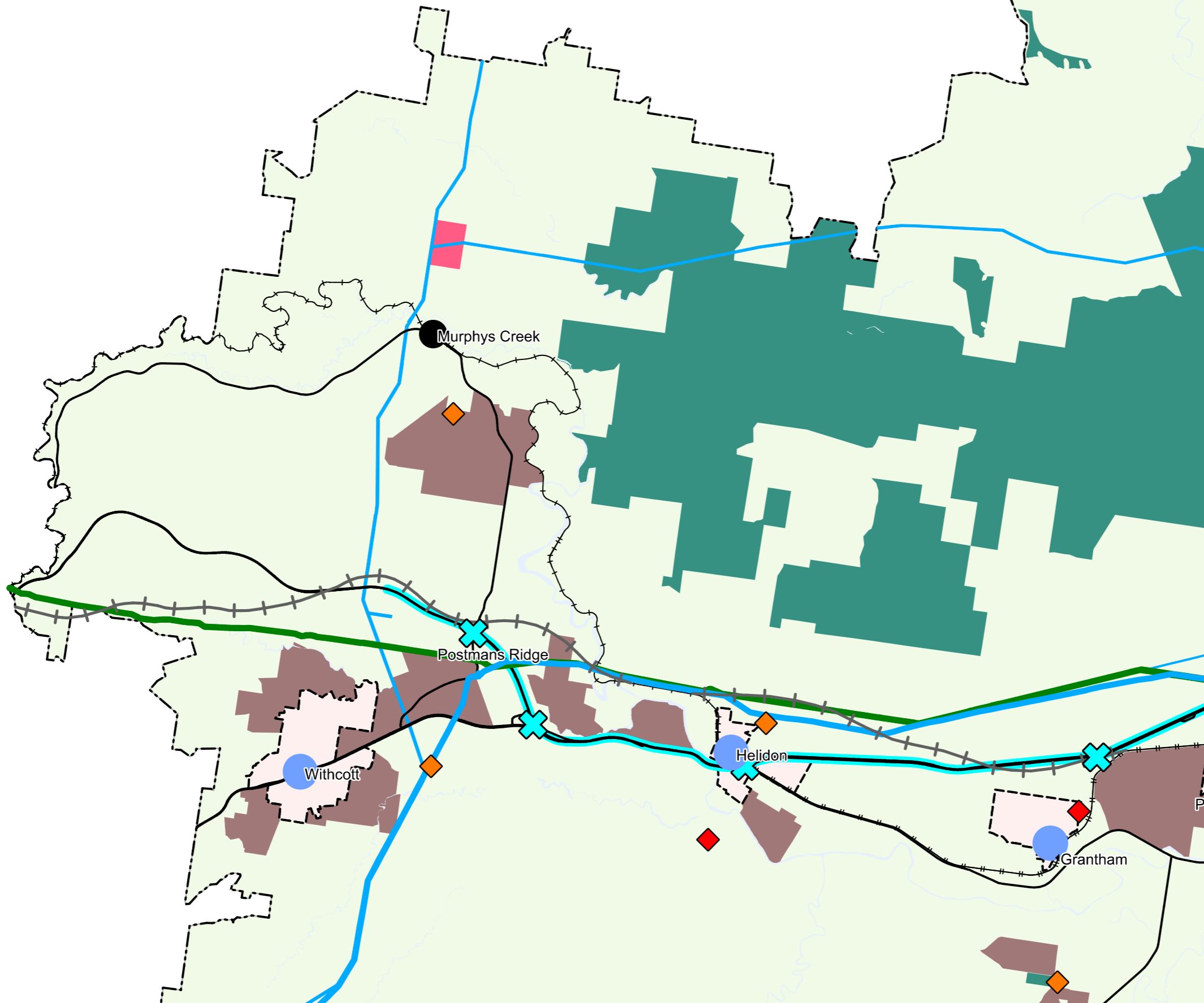
SFM3 Connecting infrastructure LVRC-00





# Lockyer Valley Regional Council Planning Scheme

## SFM3 Strategic Framework - Connecting Infrastructure map



<b>Connecting Infrastructure</b>		<b>Existing</b>	
<i>Land use</i>		Existing Substation	
Urban areas		Gas pipeline	
Rural residential areas		Major electricity infrastructure	
Rural areas		State-controlled road	
Natural areas		Principal cycle network	
<i>Commercial centres</i>		Sewerage treatment plant	
Principal rural centre		Waste facility	
Major rural centre		Water supply dam	
Local centre		<b>Future</b>	
Township		Future Substation	
Rural Hamlet		Rail corridor	
		Motorway	
		Interchange	
<b>Other Features</b>			
Major Road			
Railway Network			
Local Government Boundary			
Watercourse / Waterbody			

**NOTE**  
Refer to online or electronic mapping where layers overlap or labels obstruct the data on the map.

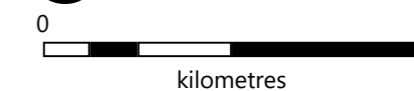
**MAP INFORMATION**  
Based on or contains data sourced from the State Government which gives no warranty in relation to the data (including accuracy, reliability, completeness or suitability) and accepts no liability (including without limitation, liability in negligence) for any loss, damage or costs (including consequential damage) relating to any use of the data.  
© Copyright Lockyer Valley Regional Council 2024

**DATA SOURCES**  
Rail network - Queensland, Baseline roads and tracks - Queensland: © State of Queensland (Department of Natural Resources, Mines and Energy) 2020, State controlled roads - Queensland, Principal Cycle Network - Queensland: © State of Queensland (Department of Transport and Main Roads) 2023.

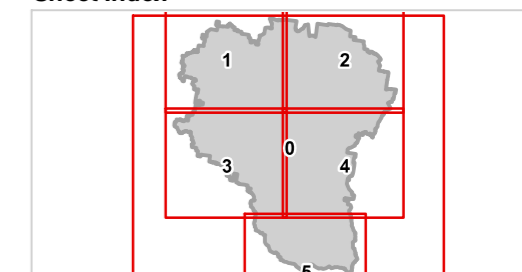
Geocentric Datum of Australia (GDA2020 / MGA zone 56)

Commencement Date: 22 July 2024

Approx Scale @ A3: 1:100,000



**Sheet Index**



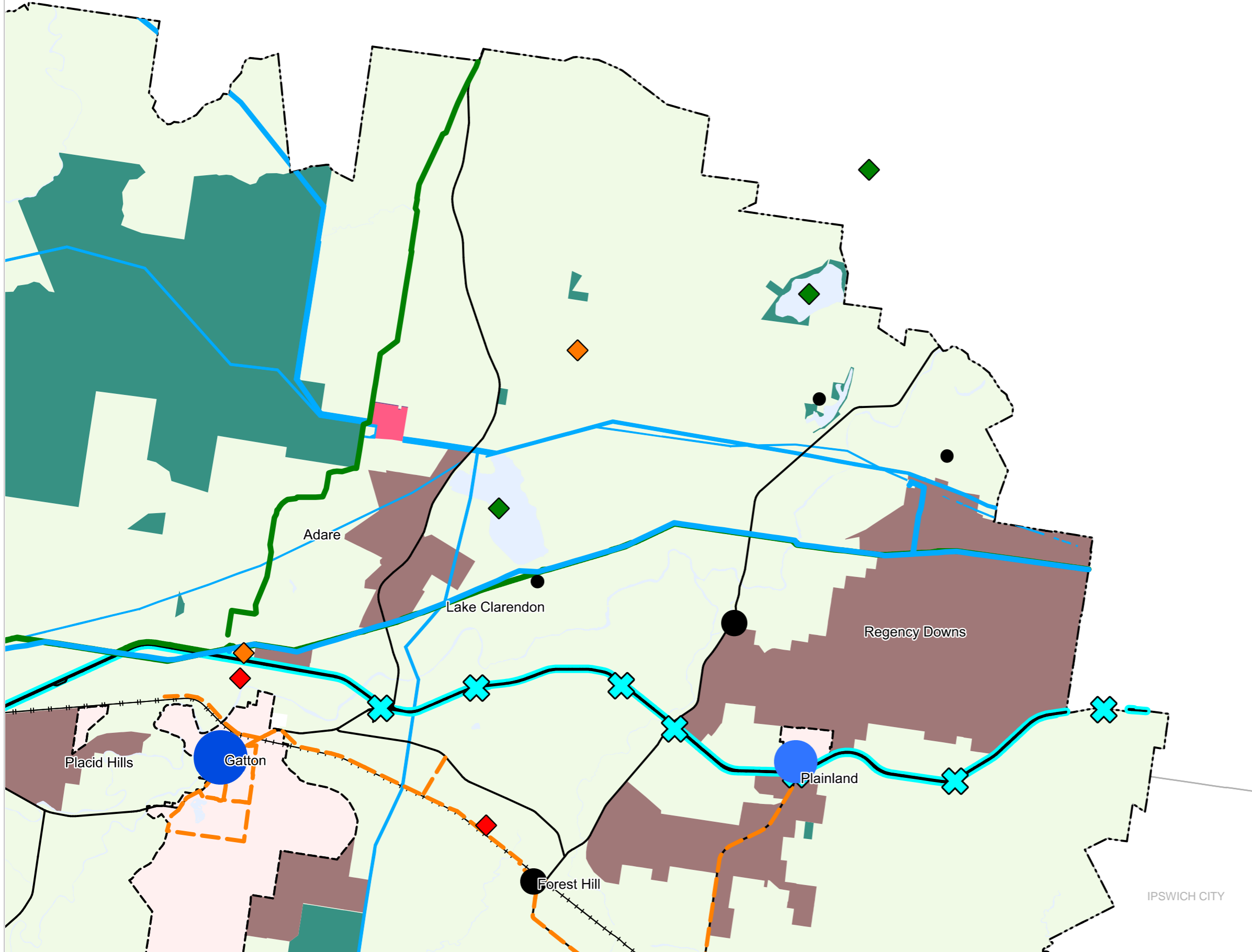
**SFM3 Connecting infrastructure LGA north-west-01**



# Lockyer Valley Regional Council Planning Scheme

REGIONAL COUNCIL

## SFM3 Strategic Framework - Connecting Infrastructure map



- Connecting Infrastructure**
- Land use*
- Urban areas
  - Rural residential areas
  - Rural areas
  - Natural areas
- Commercial centres*
- Principal rural centre
  - Major rural centre
  - Local centre
  - Township
  - Rural Hamlet
- Existing**
- Existing Substation
  - Gas pipeline
  - Major electricity infrastructure
  - State-controlled road
  - Principal cycle network
  - Sewerage treatment plant
  - Waste facility
  - Water supply dam
- Future**
- Future Substation
  - Rail corridor
  - Motorway
  - Interchange

- Other Features**
- Major Road
  - Railway Network
  - Local Government Boundary
  - Watercourse / Waterbody

**NOTE**  
Refer to online or electronic mapping where layers overlap or labels obstruct the data on the map.

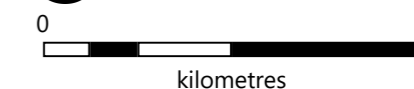
**MAP INFORMATION**  
Based on or contains data sourced from the State Government which gives no warranty in relation to the data (including accuracy, reliability, completeness or suitability) and accepts no liability (including without limitation, liability in negligence) for any loss, damage or costs (including consequential damage) relating to any use of the data.  
© Copyright Lockyer Valley Regional Council 2024

**DATA SOURCES**  
Rail network - Queensland, Baseline roads and tracks - Queensland: © State of Queensland (Department of Natural Resources, Mines and Energy) 2020, State controlled roads - Queensland, Principal Cycle Network - Queensland: © State of Queensland (Department of Transport and Main Roads) 2023.

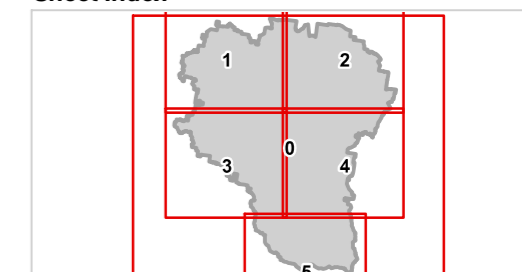
Geocentric Datum of Australia (GDA2020 / MGA zone 56)

Commencement Date: 22 July 2024

Approx Scale @ A3: 1:100,000



### Sheet Index



**SFM3 Connecting infrastructure LGA north-east-02**



# Lockyer Valley Regional Council Planning Scheme

REGIONAL COUNCIL

## SFM3 Strategic Framework - Connecting Infrastructure map

- Connecting Infrastructure**
- Land use**
- Urban areas
  - Rural residential areas
  - Rural areas
  - Natural areas
- Commercial centres**
- Principal rural centre
  - Major rural centre
  - Local centre
  - Township
  - Rural Hamlet
- Existing**
- Existing Substation
  - Gas pipeline
  - Major electricity infrastructure
  - State-controlled road
  - Principal cycle network
  - Sewerage treatment plant
  - Waste facility
  - Water supply dam
- Future**
- Future Substation
  - Rail corridor
  - Motorway
  - Interchange
- Other Features**
- Major Road
  - Railway Network
  - Local Government Boundary
  - Watercourse / Waterbody

**NOTE**  
Refer to online or electronic mapping where layers overlap or labels obstruct the data on the map.

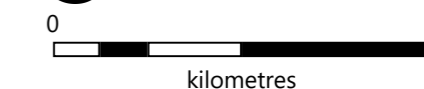
**MAP INFORMATION**  
Based on or contains data sourced from the State Government which gives no warranty in relation to the data (including accuracy, reliability, completeness or suitability) and accepts no liability (including without limitation, liability in negligence) for any loss, damage or costs (including consequential damage) relating to any use of the data.  
© Copyright Lockyer Valley Regional Council 2024

**DATA SOURCES**  
Rail network - Queensland, Baseline roads and tracks - Queensland: © State of Queensland (Department of Natural Resources, Mines and Energy) 2020, State controlled roads - Queensland, Principal Cycle Network - Queensland: © State of Queensland (Department of Transport and Main Roads) 2023.

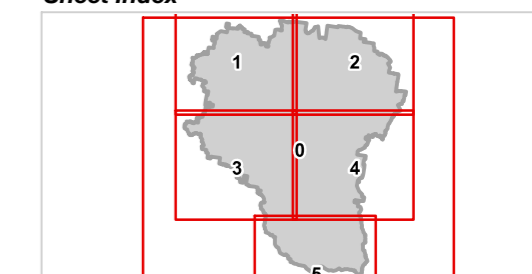
Geocentric Datum of Australia (GDA2020 / MGA zone 56)

Commencement Date: 22 July 2024

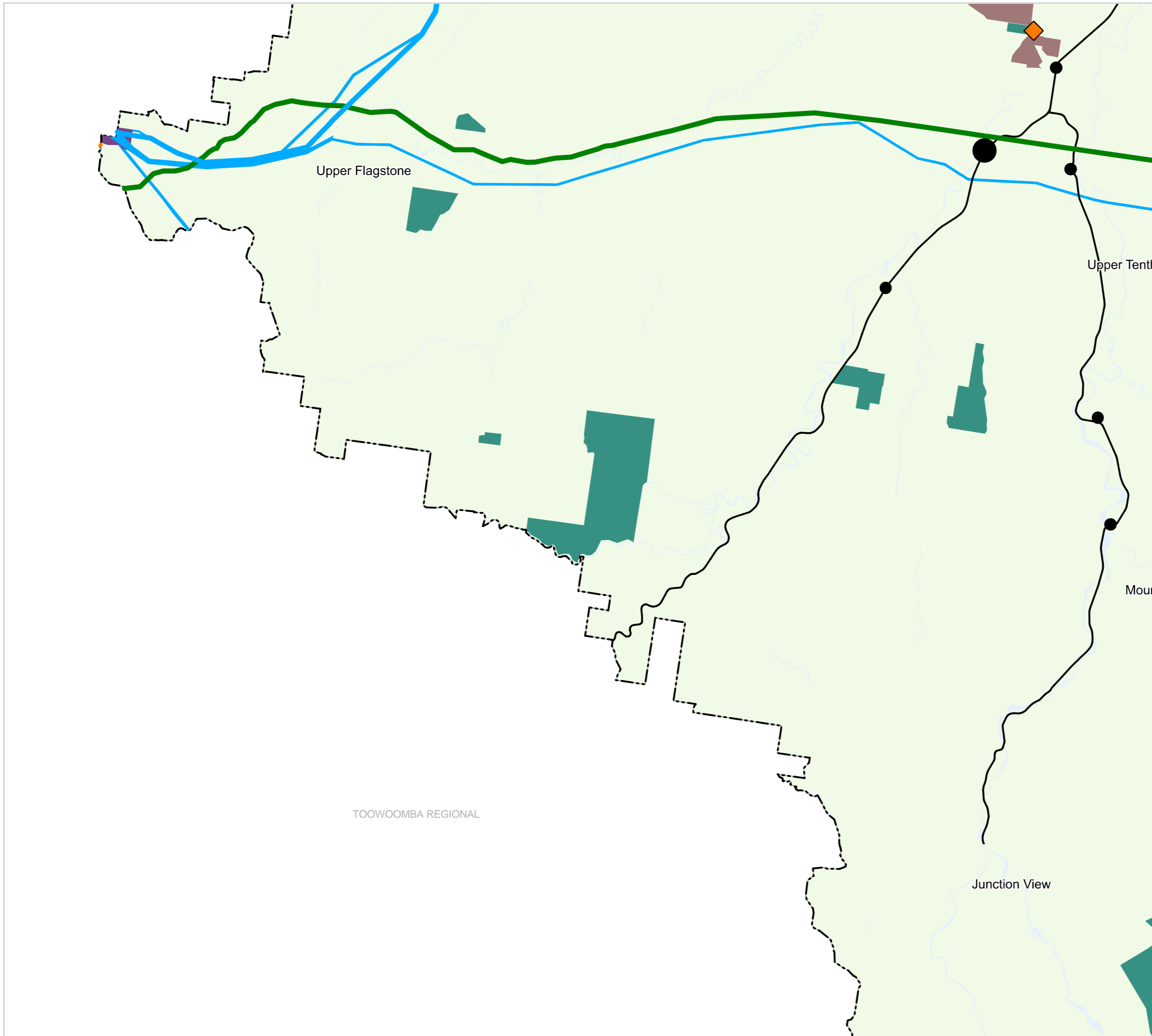
Approx Scale @ A3: 1:100,000



### Sheet Index



**SFM3 Connecting infrastructure  
LGA south-west-03**



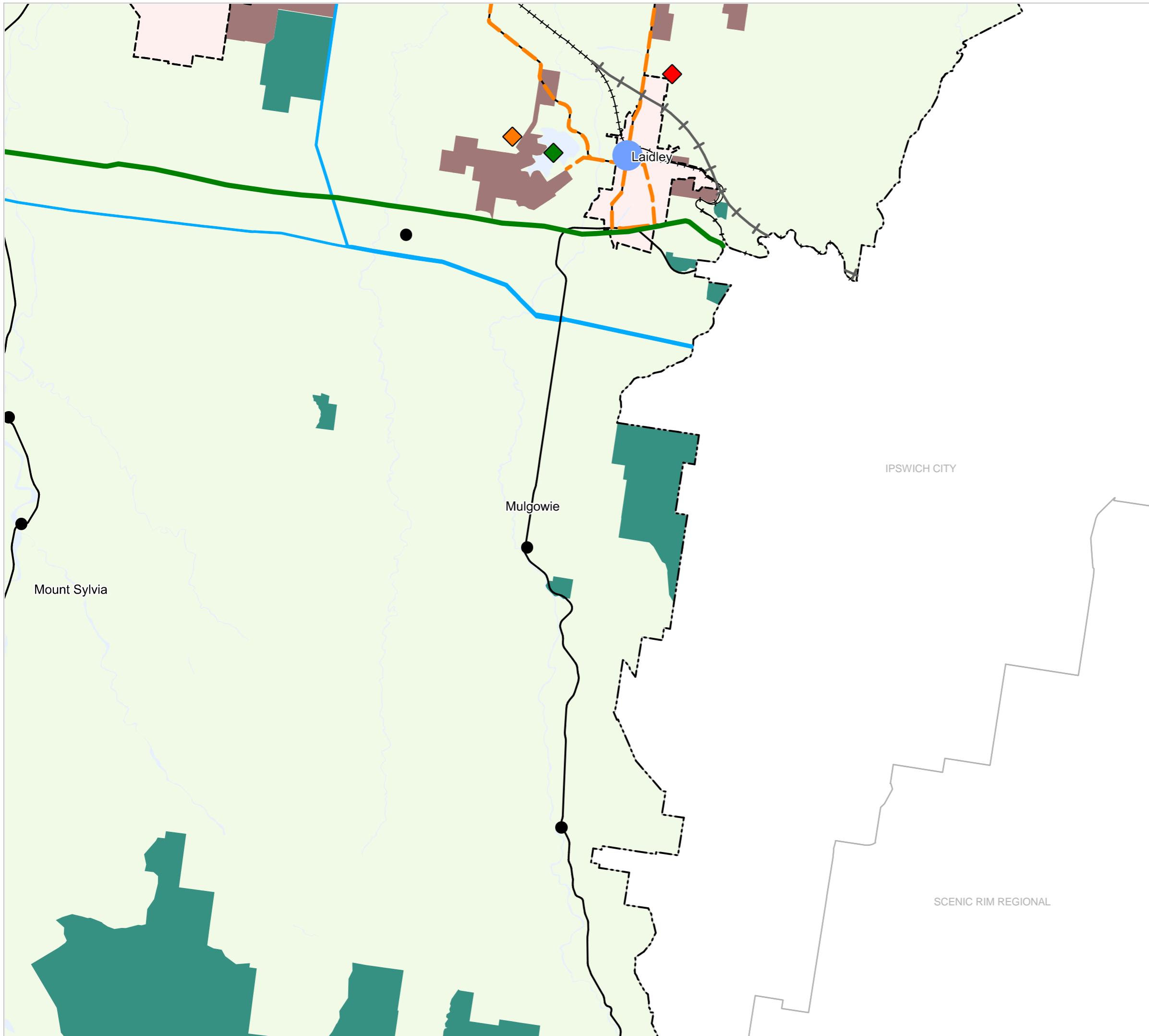
TOOWOOMBA REGIONAL



# Lockyer Valley Regional Council Planning Scheme

REGIONAL COUNCIL

## SFM3 Strategic Framework - Connecting Infrastructure map



### Connecting Infrastructure

#### Land use

- Urban areas
- Rural residential areas
- Rural areas
- Natural areas

#### Commercial centres

- Principal rural centre
- Major rural centre
- Local centre
- Township
- Rural Hamlet

### Existing

- Existing Substation
- Gas pipeline
- Major electricity infrastructure
- State-controlled road
- Principal cycle network
- Sewerage treatment plant
- Waste facility
- Water supply dam

### Future

- Future Substation
- Rail corridor
- Motorway
- Interchange

### Other Features

- Major Road
- Railway Network
- Local Government Boundary
- Watercourse / Waterbody

### NOTE

Refer to online or electronic mapping where layers overlap or labels obstruct the data on the map.

### MAP INFORMATION

Based on or contains data sourced from the State Government which gives no warranty in relation to the data (including accuracy, reliability, completeness or suitability) and accepts no liability (including without limitation, liability in negligence) for any loss, damage or costs (including consequential damage) relating to any use of the data.

© Copyright Lockyer Valley Regional Council 2024

### DATA SOURCES

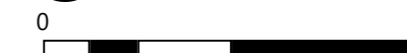
Rail network - Queensland, Baseline roads and tracks - Queensland: © State of Queensland (Department of Natural Resources, Mines and Energy) 2020, State controlled roads - Queensland, Principal Cycle Network - Queensland: © State of Queensland (Department of Transport and Main Roads) 2023.

Geocentric Datum of Australia (GDA2020 / MGA zone 56)

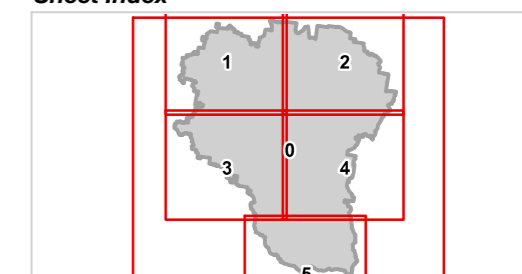


Commencement Date: 22 July 2024

Approx Scale @ A3: 1:100,000



### Sheet Index



SFM3 Connecting infrastructure LGA south-east-04



# Lockyer Valley Regional Council Planning Scheme

REGIONAL COUNCIL

## SFM3 Strategic Framework - Connecting Infrastructure map

### Connecting Infrastructure

#### Land use

- Urban areas
- Rural residential areas
- Rural areas
- Natural areas

#### Commercial centres

- Principal rural centre
- Major rural centre
- Local centre
- Township
- Rural Hamlet

#### Other Features

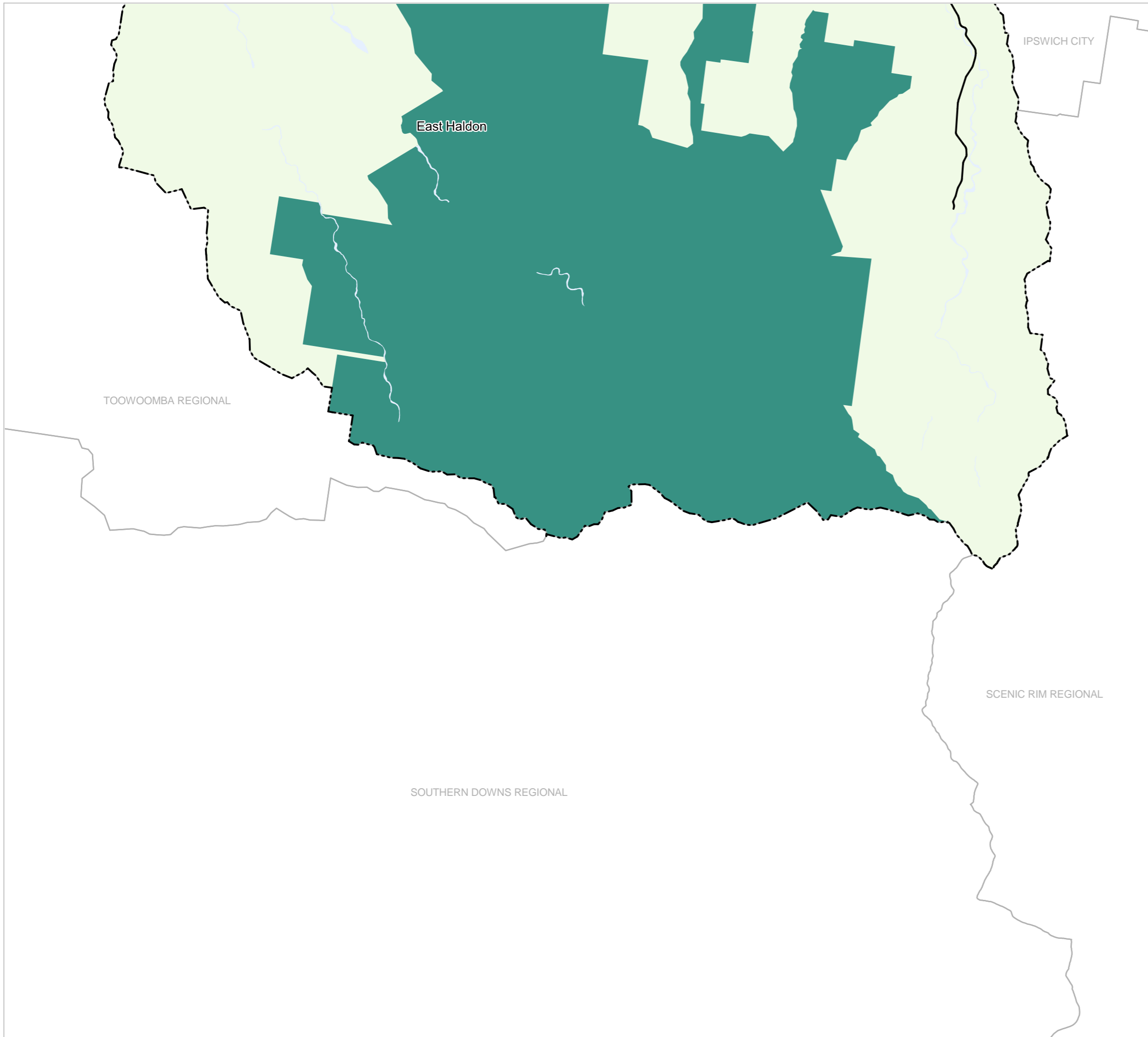
- Major Road
- Railway Network
- Local Government Boundary
- Watercourse / Waterbody

#### Existing

- Existing Substation
- Gas pipeline
- Major electricity infrastructure
- State-controlled road
- Principal cycle network
- Sewerage treatment plant
- Waste facility
- Water supply dam

#### Future

- Future Substation
- Rail corridor
- Motorway
- Interchange



### NOTE

Refer to online or electronic mapping where layers overlap or labels obstruct the data on the map.

### MAP INFORMATION

Based on or contains data sourced from the State Government which gives no warranty in relation to the data (including accuracy, reliability, completeness or suitability) and accepts no liability (including without limitation, liability in negligence) for any loss, damage or costs (including consequential damage) relating to any use of the data.

© Copyright Lockyer Valley Regional Council 2024

### DATA SOURCES

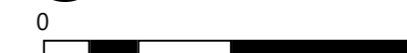
Rail network - Queensland, Baseline roads and tracks - Queensland: © State of Queensland (Department of Natural Resources, Mines and Energy) 2020, State controlled roads - Queensland, Principal Cycle Network - Queensland: © State of Queensland (Department of Transport and Main Roads) 2023.

Geocentric Datum of Australia (GDA2020 / MGA zone 56)

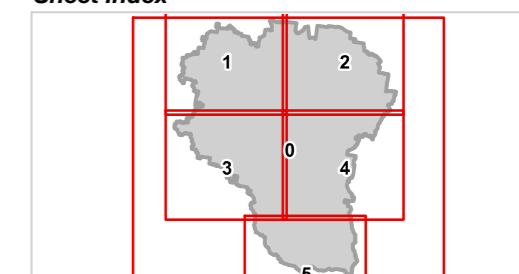


Commencement Date: 22 July 2024

Approx Scale @ A3: 1:100,000



### Sheet Index



SFM3 Connecting infrastructure LGA south-05