

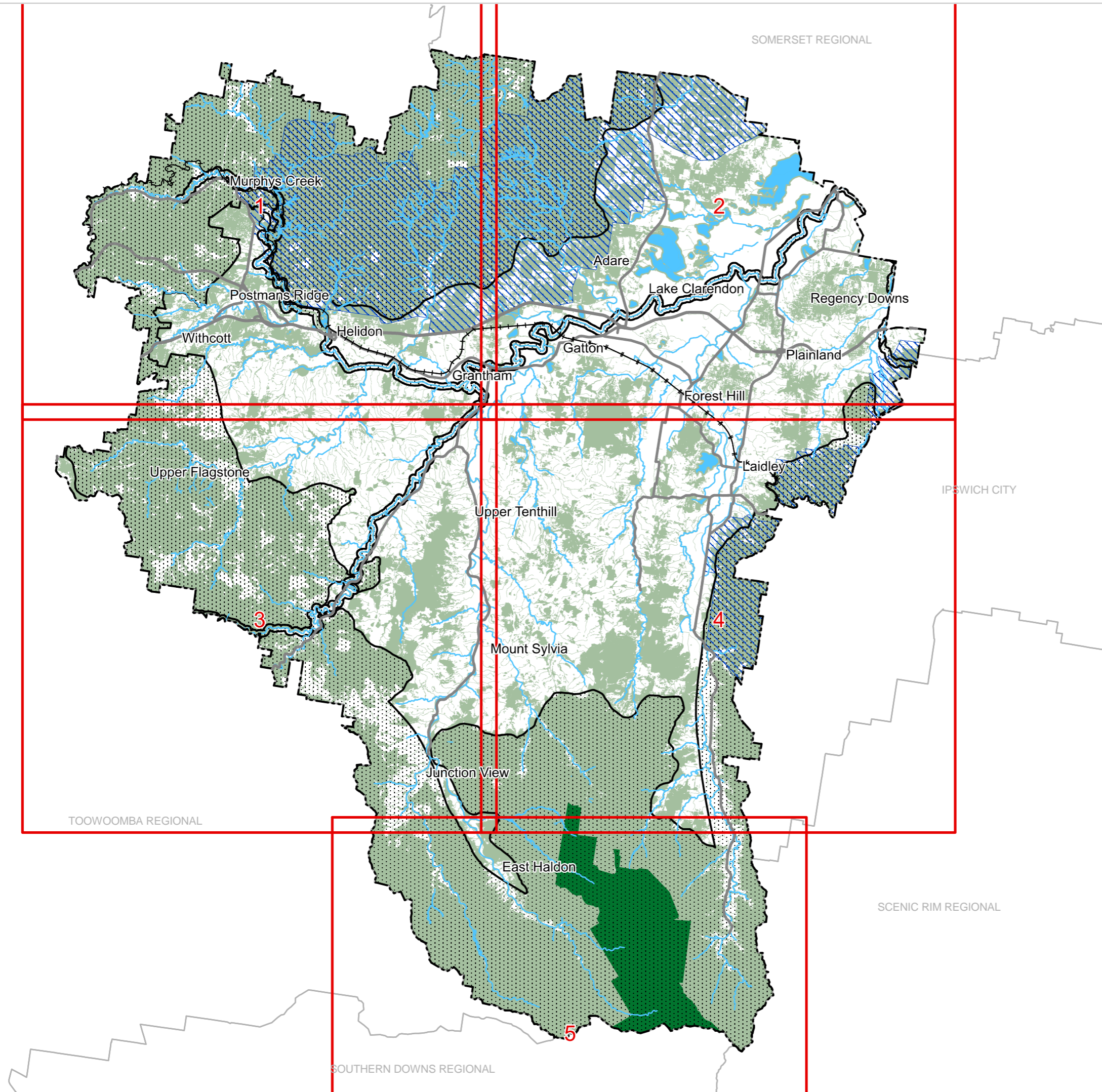


REGIONAL COUNCIL

SFM4A Strategic Framework - Sustaining the natural environment - Habitat map

- Habitats**
- Watercourses and wetlands
 - Matters of environmental significance
 - Gondwana World Heritage Area
 - Ecological corridors
 - Koala priority areas

- Other Features**
- Major Road
 - Railway Network
 - Local Government Boundary
 - Watercourse / Waterbody



NOTE
Refer to online or electronic mapping where layers overlap or labels obstruct the data on the map.

MAP INFORMATION
Based on or contains data sourced from the State Government which gives no warranty in relation to the data (including accuracy, reliability, completeness or suitability) and accepts no liability (including without limitation, liability in negligence) for any loss, damage or costs (including consequential damage) relating to any use of the data.
© Copyright Lockyer Valley Regional Council 2024

DATA SOURCES
Rail network - Queensland, Queensland roads and tracks, State controlled roads surveyed centreline - Queensland, © State of Queensland (Department of Resources) 2020.

Geocentric Datum of Australia (GDA2020 / MGA zone 56)

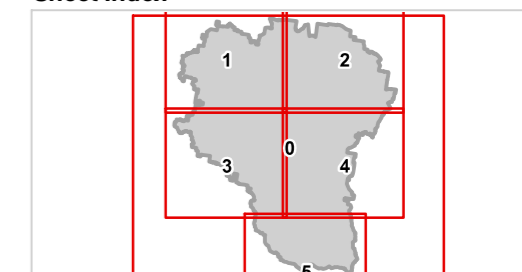
Commencement Date: 22 July 2024

Approx Scale @ A3: 1:250,000

0 10

kilometres

Sheet Index



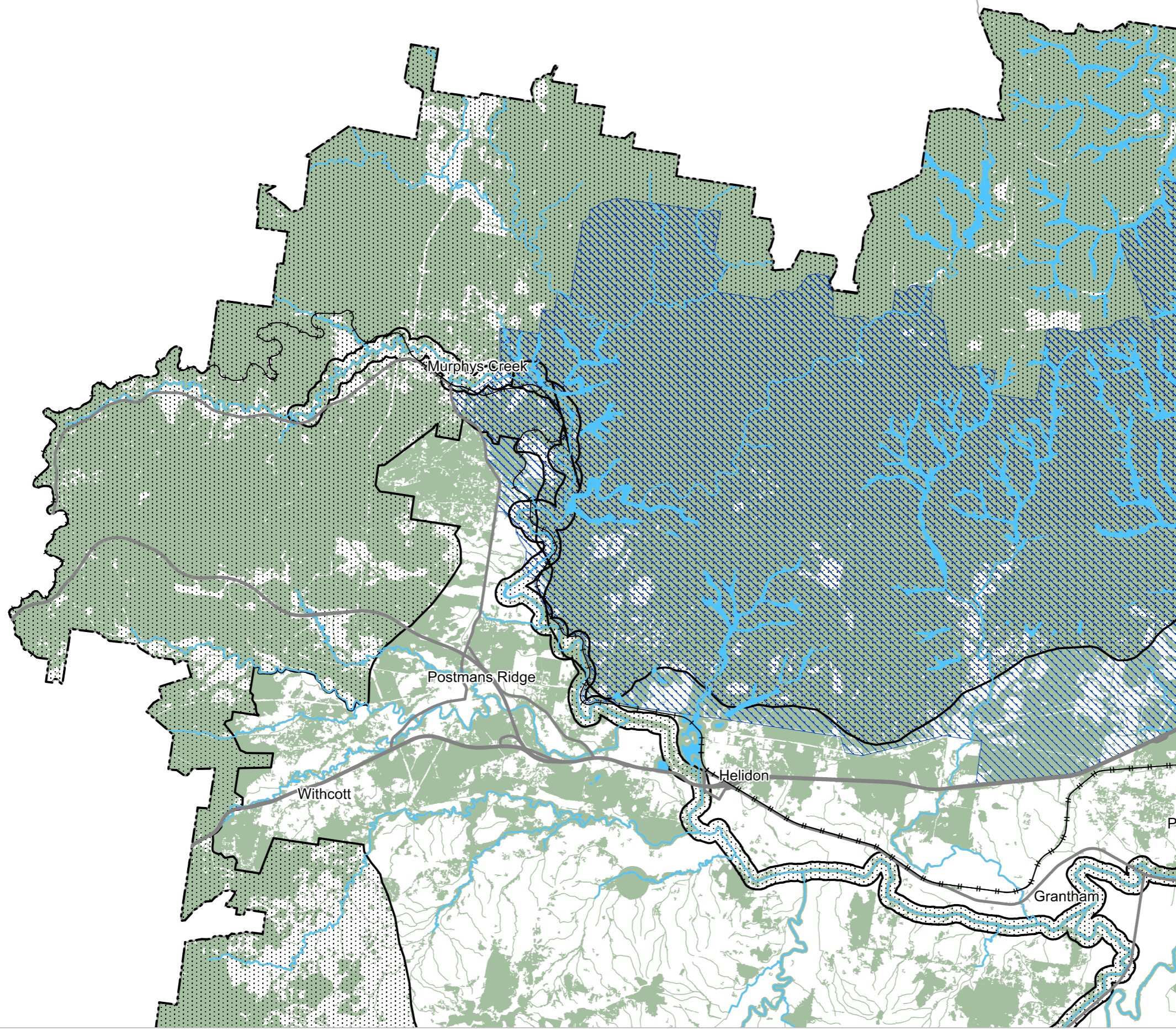


REGIONAL COUNCIL

SFM4A Strategic Framework - Sustaining the natural environment - Habitat map

- Habitats**
- Watercourses and wetlands
 - Watercourses and wetlands
 - Matters of environmental significance
 - Gondwana World Heritage Area
 - Ecological corridors
 - Koala priority areas

- Other Features**
- Major Road
 - Railway Network
 - Local Government Boundary
 - Watercourse / Waterbody



NOTE
Refer to online or electronic mapping where layers overlap or labels obstruct the data on the map.

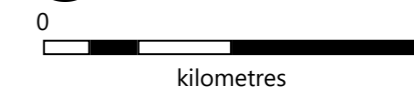
MAP INFORMATION
Based on or contains data sourced from the State Government which gives no warranty in relation to the data (including accuracy, reliability, completeness or suitability) and accepts no liability (including without limitation, liability in negligence) for any loss, damage or costs (including consequential damage) relating to any use of the data.
© Copyright Lockyer Valley Regional Council 2024

DATA SOURCES
Rail network - Queensland, Queensland roads and tracks, State controlled roads surveyed centreline - Queensland. © State of Queensland (Department of Resources) 2020.

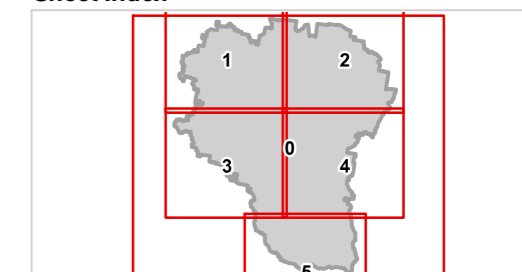
Geocentric Datum of Australia (GDA2020 / MGA zone 56)

Commencement Date: 22 July 2024

Approx Scale @ A3: 1:100,000



Sheet Index





REGIONAL COUNCIL

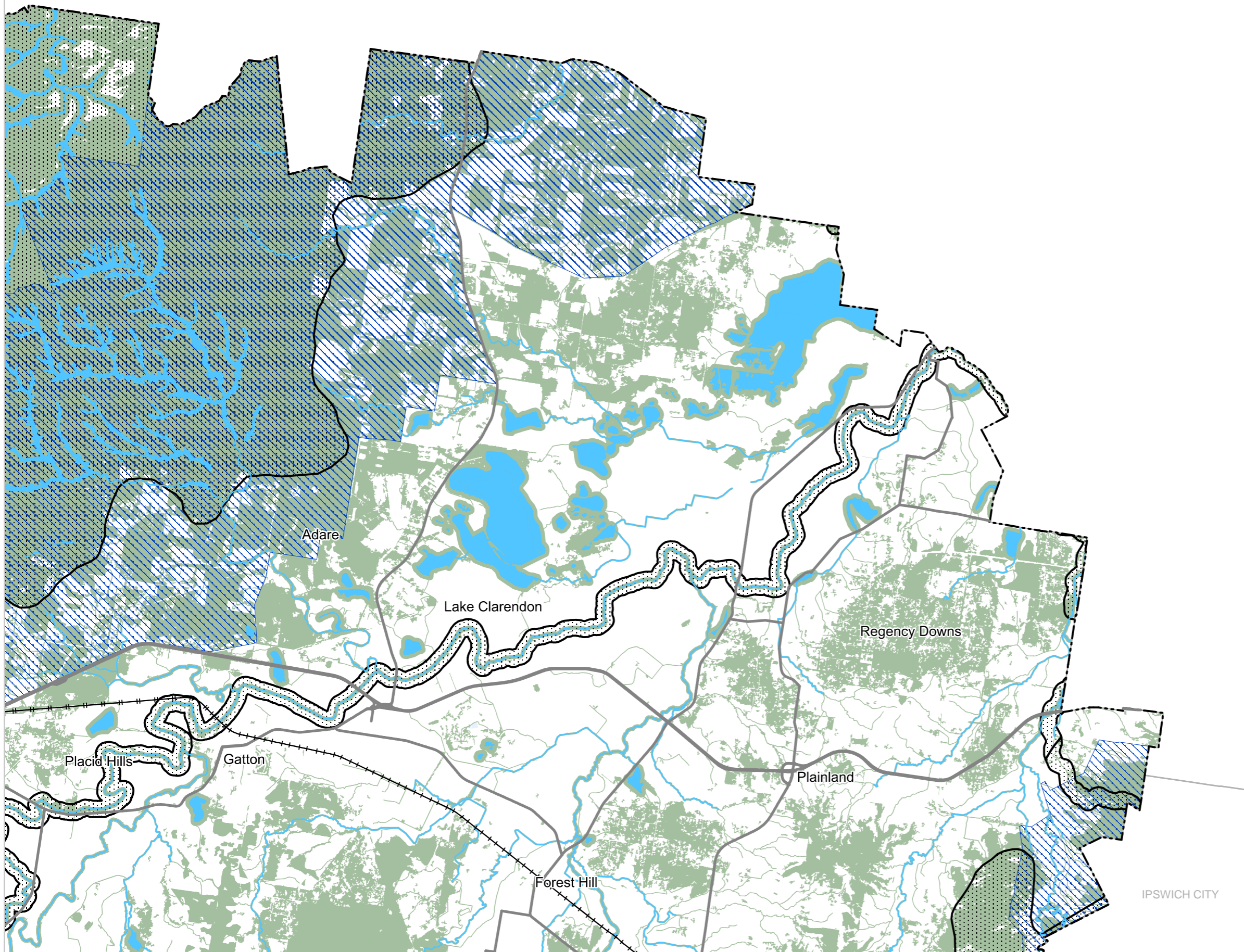
SFM4A Strategic Framework - Sustaining the natural environment - Habitat map

Habitats

- Watercourses and wetlands
- Watercourses and wetlands
- Matters of environmental significance
- Gondwana World Heritage Area
- Ecological corridors
- Koala priority areas

Other Features

- Major Road
- Railway Network
- Local Government Boundary
- Watercourse / Waterbody



NOTE

Refer to online or electronic mapping where layers overlap or labels obstruct the data on the map.

MAP INFORMATION

Based on or contains data sourced from the State Government which gives no warranty in relation to the data (including accuracy, reliability, completeness or suitability) and accepts no liability (including without limitation, liability in negligence) for any loss, damage or costs (including consequential damage) relating to any use of the data.

DATA SOURCES

Rail network - Queensland, Queensland roads and tracks, State controlled roads surveyed centreline - Queensland. © State of Queensland (Department of Resources) 2020.

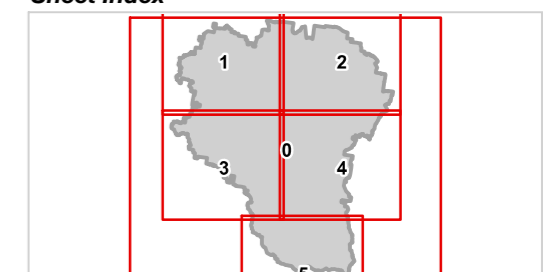
Geocentric Datum of Australia (GDA2020 / MGA zone 56)

Commencement Date: 22 July 2024

Approx Scale @ A3: 1:100,000



Sheet Index





REGIONAL COUNCIL

SFM4A Strategic Framework - Sustaining the natural environment - Habitat map

- Habitats**
- Watercourses and wetlands
 - Watercourses and wetlands
 - Matters of environmental significance
 - Gondwana World Heritage Area
 - Ecological corridors
 - Koala priority areas

- Other Features**
- Major Road
 - Railway Network
 - Local Government Boundary
 - Watercourse / Waterbody

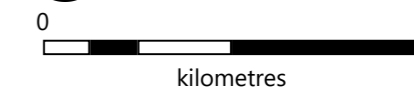
NOTE
Refer to online or electronic mapping where layers overlap or labels obstruct the data on the map.

MAP INFORMATION
Based on or contains data sourced from the State Government which gives no warranty in relation to the data (including accuracy, reliability, completeness or suitability) and accepts no liability (including without limitation, liability in negligence) for any loss, damage or costs (including consequential damage) relating to any use of the data.
© Copyright Lockyer Valley Regional Council 2024

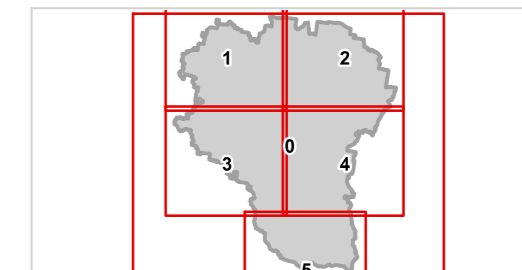
DATA SOURCES
Rail network - Queensland, Queensland roads and tracks, State controlled roads surveyed centreline - Queensland. © State of Queensland (Department of Resources) 2020.

Geocentric Datum of Australia (GDA2020 / MGA zone 56)

Commencement Date: 22 July 2024
Approx Scale @ A3: 1:100,000



Sheet Index



TOOWOOMBA REGIONAL



REGIONAL COUNCIL

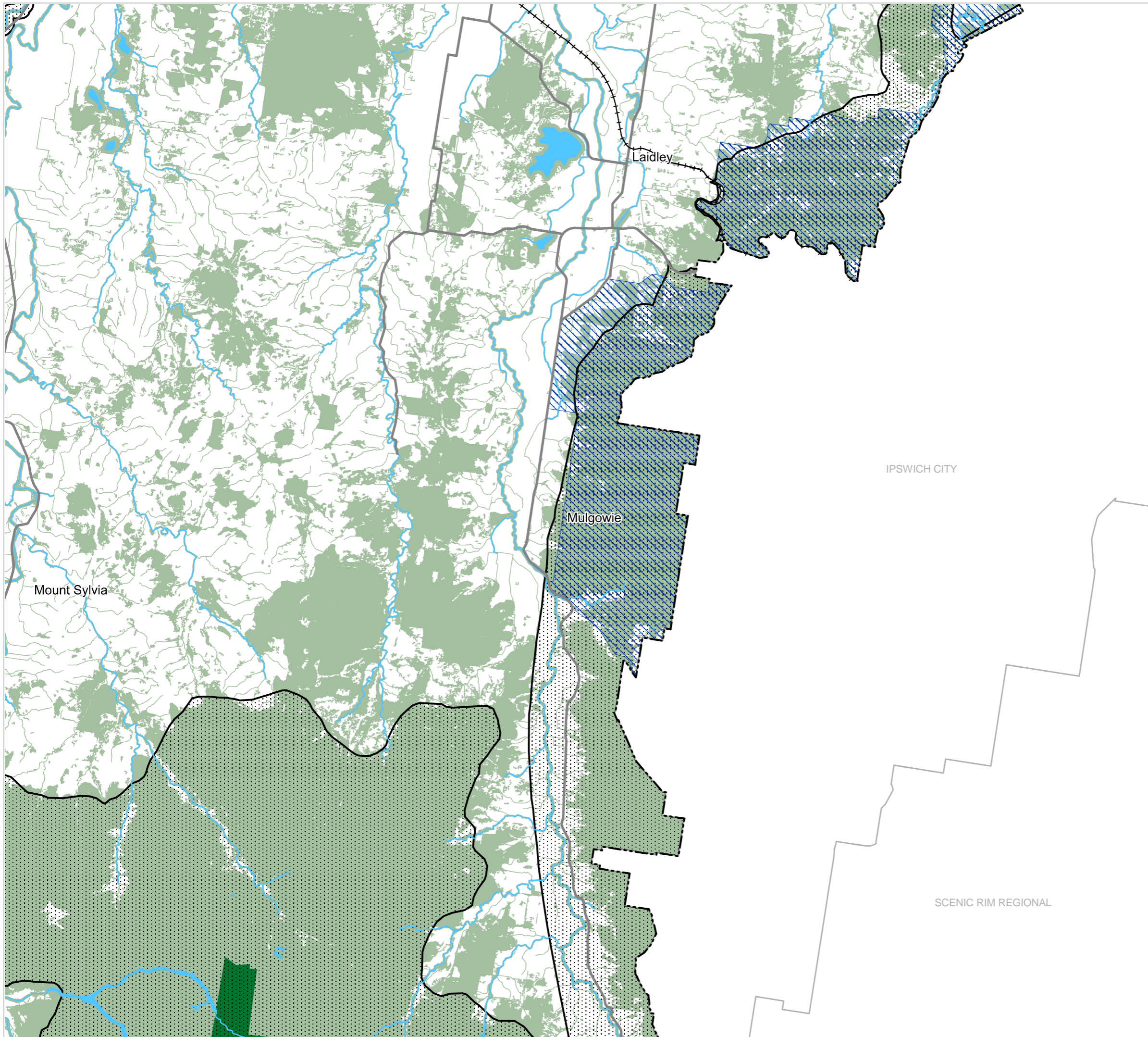
SFM4A Strategic Framework - Sustaining the natural environment - Habitat map

Habitats

- Watercourses and wetlands
- Watercourses and wetlands
- Matters of environmental significance
- Gondwana World Heritage Area
- Ecological corridors
- Koala priority areas

Other Features

- Major Road
- Railway Network
- Local Government Boundary
- Watercourse / Waterbody



IPSWICH CITY

Mulgowie

Mount Sylvia

Laidley

SCENIC RIM REGIONAL

NOTE

Refer to online or electronic mapping where layers overlap or labels obstruct the data on the map.

MAP INFORMATION

Based on or contains data sourced from the State Government which gives no warranty in relation to the data (including accuracy, reliability, completeness or suitability) and accepts no liability (including without limitation, liability in negligence) for any loss, damage or costs (including consequential damage) relating to any use of the data. © Copyright Lockyer Valley Regional Council 2024

DATA SOURCES

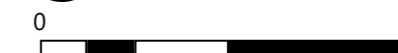
Rail network - Queensland, Queensland roads and tracks, State controlled roads surveyed centreline - Queensland. © State of Queensland (Department of Resources) 2020.

Geocentric Datum of Australia (GDA2020 / MGA zone 56)

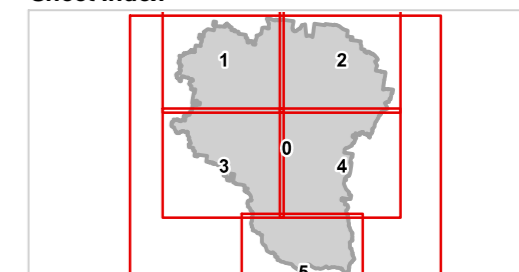


Commencement Date: 22 July 2024

Approx Scale @ A3: 1:100,000



Sheet Index





REGIONAL COUNCIL

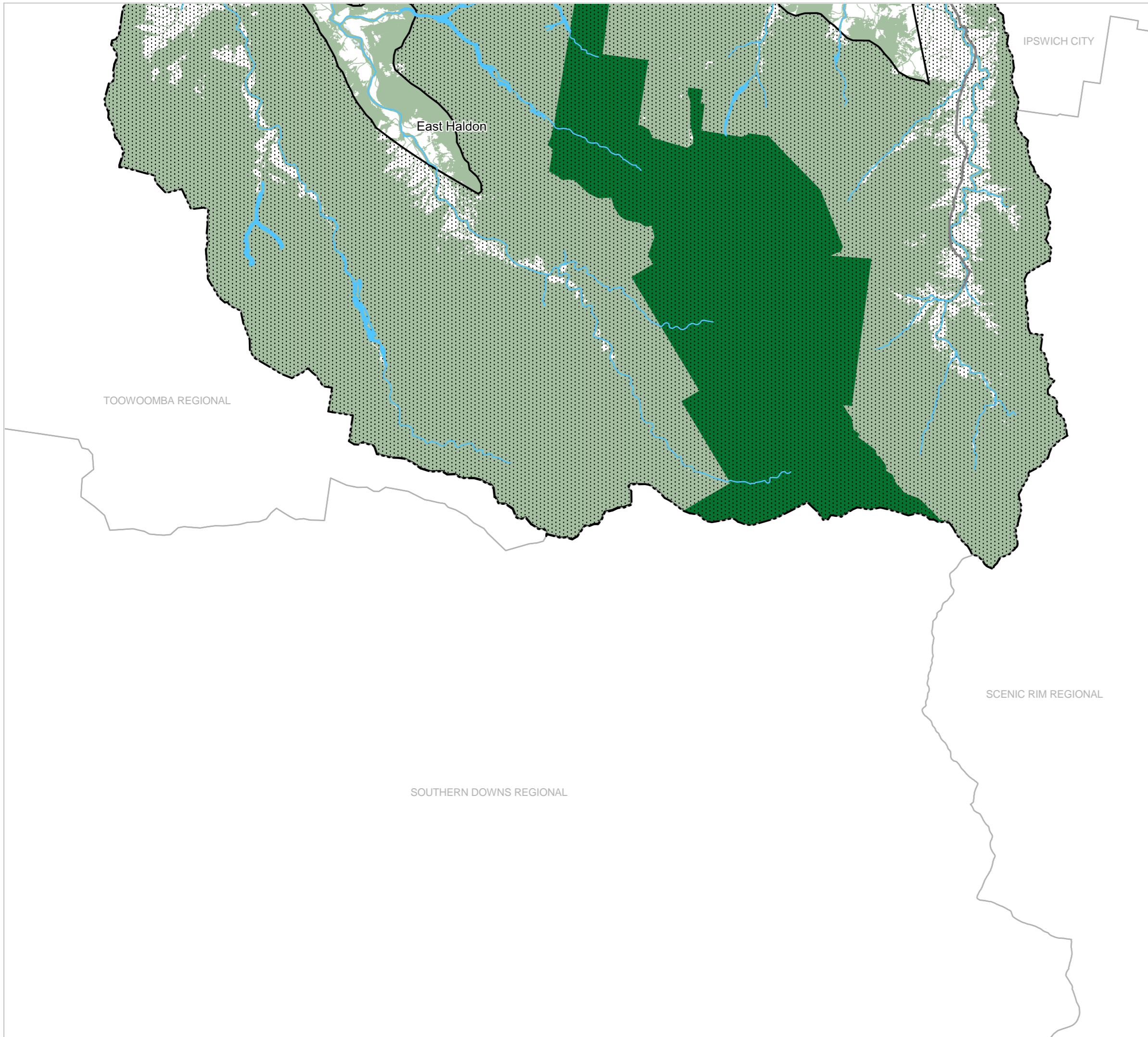
SFM4A Strategic Framework - Sustaining the natural environment - Habitat map

Habitats

- Watercourses and wetlands
- Watercourses and wetlands
- Matters of environmental significance
- Gondwana World Heritage Area
- Ecological corridors
- Koala priority areas

Other Features

- Major Road
- Railway Network
- Local Government Boundary
- Watercourse / Waterbody



NOTE

Refer to online or electronic mapping where layers overlap or labels obstruct the data on the map.

MAP INFORMATION

Based on or contains data sourced from the State Government which gives no warranty in relation to the data (including accuracy, reliability, completeness or suitability) and accepts no liability (including without limitation, liability in negligence) for any loss, damage or costs (including consequential damage) relating to any use of the data.

© Copyright Lockyer Valley Regional Council 2024

DATA SOURCES

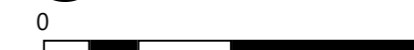
Rail network - Queensland, Queensland roads and tracks, State controlled roads surveyed centreline - Queensland © State of Queensland (Department of Resources) 2020.

Geocentric Datum of Australia (GDA2020 / MGA zone 56)



Commencement Date: 22 July 2024

Approx Scale @ A3: 1:100,000



kilometres

Sheet Index

