



REGIONAL COUNCIL

SFM4B Strategic Framework - Sustaining the natural environment - Landscape map

Sustaining the environment

Landscape features

- Scenic Landscape Areas
- Viewing corridors
- Lockyer Creek water resource catchment
- Mountain range
- Mountain peak
- Waterbodies and wetlands
- Lookouts
- Regional gateway

Cultural heritage parties

- Githabul People (Waringh Waringh)
- Jagera People #2
- Western Wakka Wakka People
- Yuggera Ugarapul People

Other Features

- Major Road
- Railway Network
- Local government boundary
- Watercourse / Waterbody

NOTE

Refer to online or electronic mapping where layers overlap or labels obstruct the data on the map.

MAP INFORMATION

Based on or contains data sourced from the State Government 2023 which gives no warranty in relation to the data (including accuracy, reliability, completeness or suitability) and accepts no liability (including without limitation, liability in negligence) for any loss, damage or costs (including consequential damage) relating to any use of the data. © Copyright Lockyer Valley Regional Council 2024

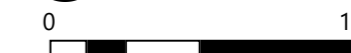
DATA SOURCES

Cadastral data weekly - whole of State Queensland, Rail network - Queensland, Queensland roads and tracks, State controlled roads surveyed centreline - Queensland. © State of Queensland (Department of Resources) 2023.

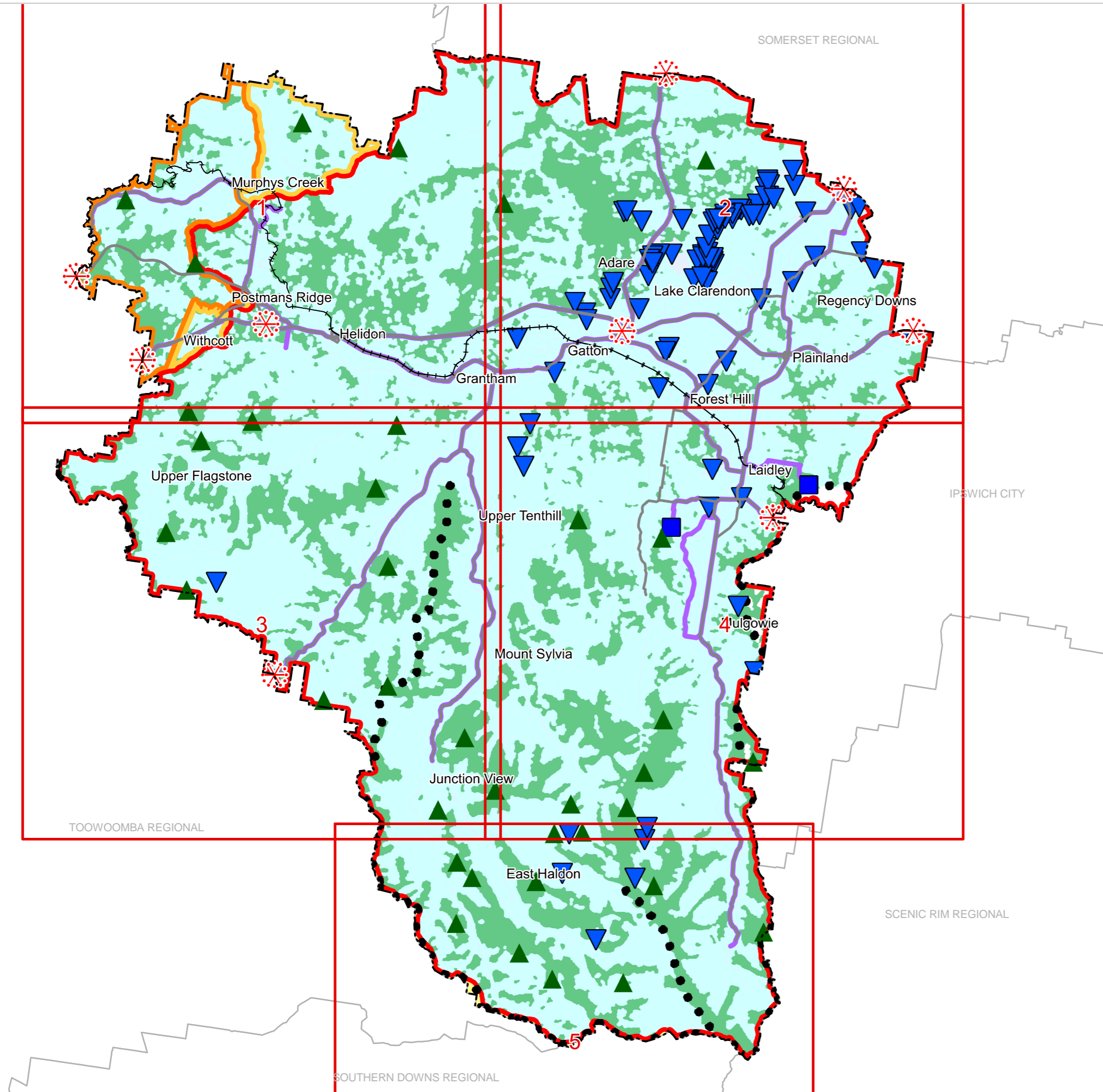
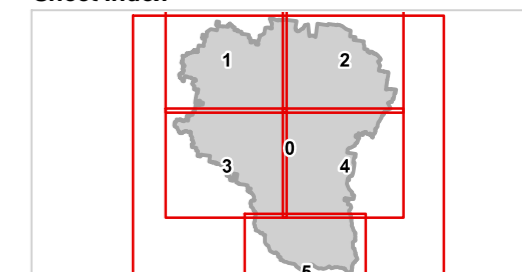
Geocentric Datum of Australia (GDA2020 / MGA zone 56)

Commencement Date: 22 July 2024

Approx Scale @ A3: 1:250,000



Sheet Index





REGIONAL COUNCIL

SFM4B Strategic Framework - Sustaining the natural environment - Landscape map

Sustaining the environment

Landscape features

- Scenic Landscape Areas
- Viewing corridors
- Lockyer Creek water resource catchment

- Mountain range
- Mountain peak
- Waterbodies and wetlands
- Lookouts
- Regional gateway

Cultural heritage parties

- Githabul People (Waringh Waringh)
- Jagera People #2
- Western Wakka Wakka People
- Yuggera Ugarapul People

Other Features

- Major Road
- Railway Network
- Local government boundary
- Watercourse / Waterbody

NOTE

Refer to online or electronic mapping where layers overlap or labels obstruct the data on the map.

MAP INFORMATION

Based on or contains data sourced from the State Government 2023 which gives no warranty in relation to the data (including accuracy, reliability, completeness or suitability) and accepts no liability (including without limitation, liability in negligence) for any loss, damage or costs (including consequential damage) relating to any use of the data.

© Copyright Lockyer Valley Regional Council 2024

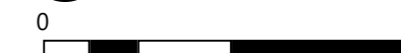
DATA SOURCES

Cadastral data weekly - whole of State Queensland, Rail network - Queensland, Queensland roads and tracks, State controlled roads surveyed centreline - Queensland. © State of Queensland (Department of Resources) 2023.

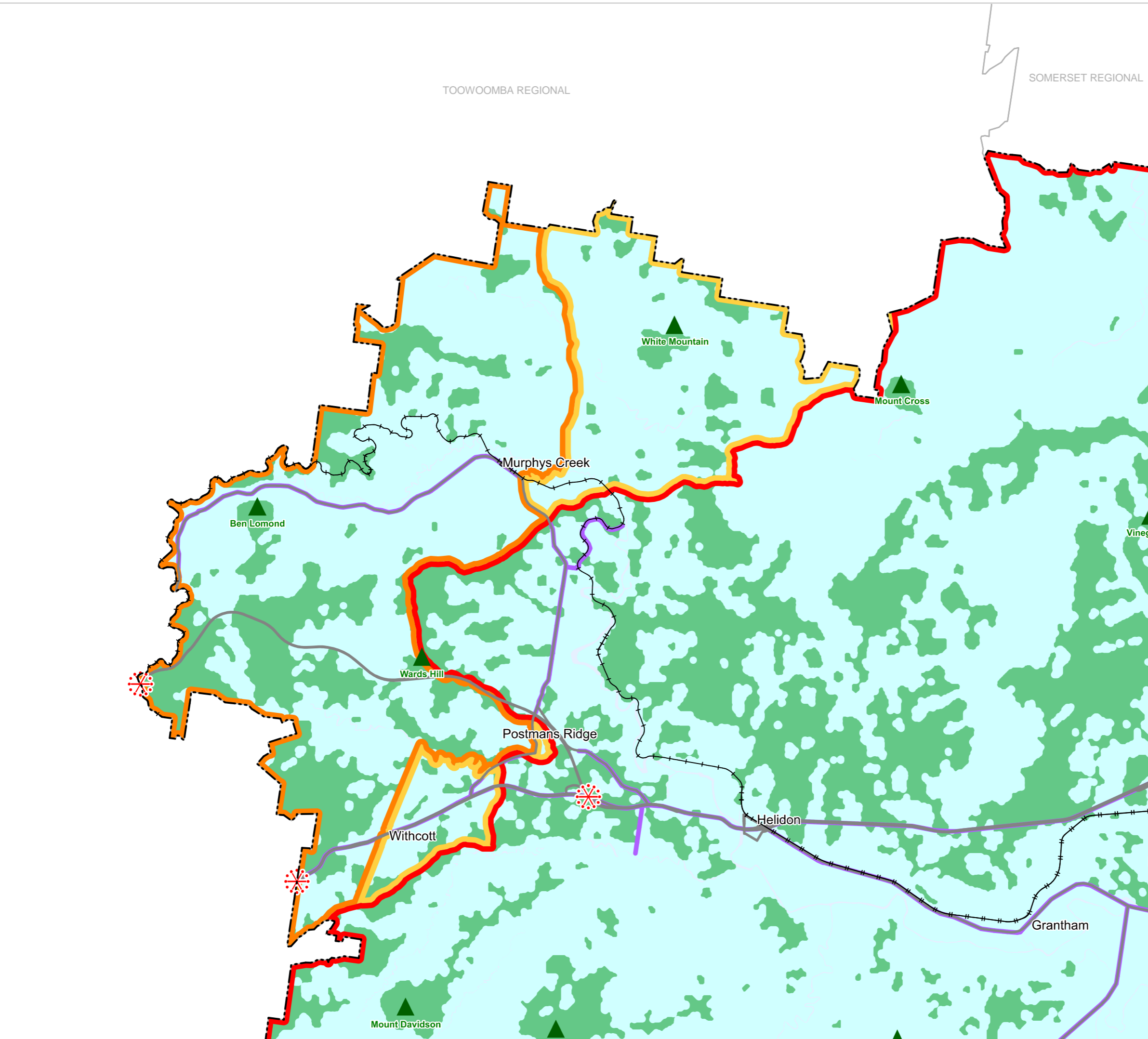
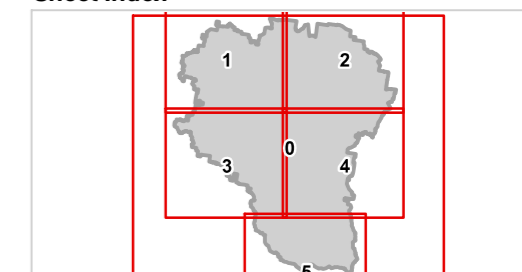
Geocentric Datum of Australia (GDA2020 / MGA zone 56)

Commencement Date: 22 July 2024

Approx Scale @ A3: 1:100,000



Sheet Index



TOOWOOMBA REGIONAL

SOMERSET REGIONAL

White Mountain

Mount Cross

Murphys Creek

Ben Lomond

Vinegar

Wards Hill

Postmans Ridge

Helidon

Withcott

Grantham

Mount Davidson



REGIONAL COUNCIL

SFM4B Strategic Framework - Sustaining the natural environment - Landscape map

Sustaining the environment

Landscape features

- Scenic Landscape Areas
- Viewing corridors
- Lockyer Creek water resource catchment

- Mountain range
- Mountain peak
- Waterbodies and wetlands
- Lookouts
- Regional gateway

Cultural heritage parties

- Githabul People (Waringh Waringh)
- Jagera People #2
- Western Wakka Wakka People
- Yuggera Ugarapul People

Other Features

- Major Road
- Railway Network
- Local government boundary
- Watercourse / Waterbody

NOTE

Refer to online or electronic mapping where layers overlap or labels obstruct the data on the map.

MAP INFORMATION

Based on or contains data sourced from the State Government 2023 which gives no warranty in relation to the data (including accuracy, reliability, completeness or suitability) and accepts no liability (including without limitation, liability in negligence) for any loss, damage or costs (including consequential damage) relating to any use of the data.

© Copyright Lockyer Valley Regional Council 2024

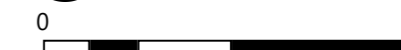
DATA SOURCES

Cadastral data weekly - whole of State Queensland, Rail network - Queensland, Queensland roads and tracks, State controlled roads surveyed centreline - Queensland: © State of Queensland (Department of Resources) 2023.

Geocentric Datum of Australia (GDA2020 / MGA zone 56)

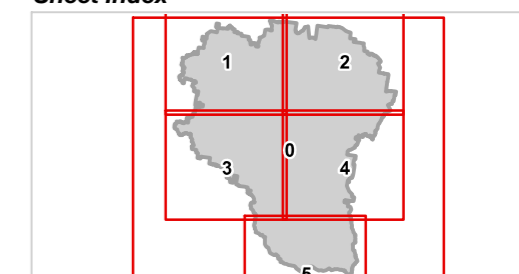
Commencement Date: 22 July 2024

Approx Scale @ A3: 1:100,000

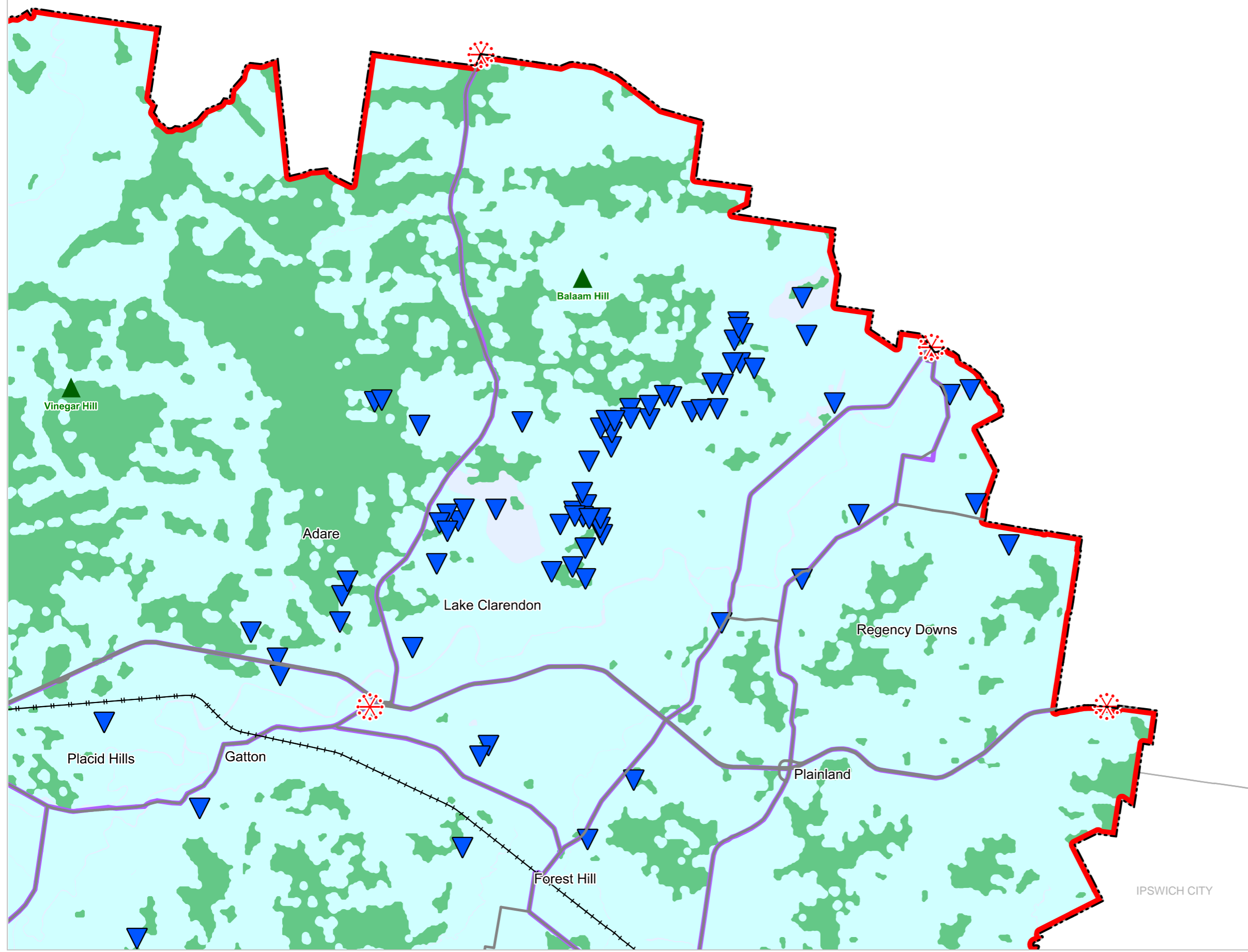


kilometres

Sheet Index



SOMERSET REGIONAL



IPSWICH CITY





REGIONAL COUNCIL

SFM4B Strategic Framework - Sustaining the natural environment - Landscape map

Sustaining the environment

Landscape features

- Scenic Landscape Areas
- Viewing corridors
- Lockyer Creek water resource catchment
- Mountain range
- Mountain peak
- Waterbodies and wetlands
- Lookouts
- Regional gateway

Cultural heritage parties

- Githabul People (Waringh Waringh)
- Jagera People #2
- Western Wakka Wakka People
- Yuggera Ugarapul People

Other Features

- Major Road
- Railway Network
- Local government boundary
- Watercourse / Waterbody

NOTE

Refer to online or electronic mapping where layers overlap or labels obstruct the data on the map.

MAP INFORMATION

Based on or contains data sourced from the State Government 2023 which gives no warranty in relation to the data (including accuracy, reliability, completeness or suitability) and accepts no liability (including without limitation, liability in negligence) for any loss, damage or costs (including consequential damage) relating to any use of the data.

© Copyright Lockyer Valley Regional Council 2024

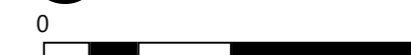
DATA SOURCES

Cadastral data weekly - whole of State Queensland, Rail network - Queensland, Queensland roads and tracks, State controlled roads surveyed centreline - Queensland. © State of Queensland (Department of Resources) 2023.

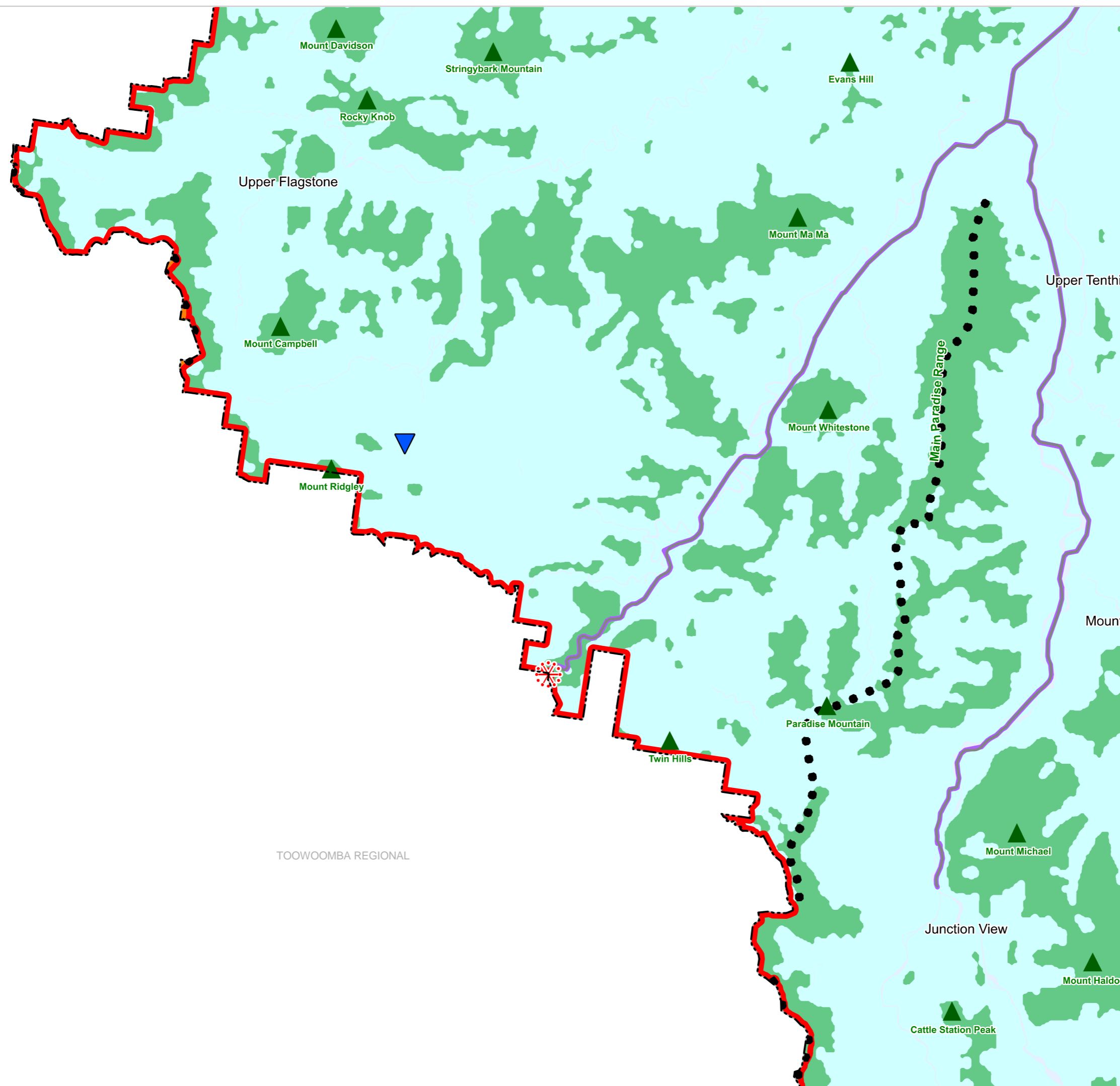
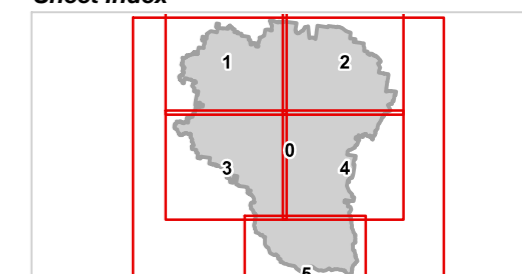
Geocentric Datum of Australia (GDA2020 / MGA zone 56)

Commencement Date: 22 July 2024

Approx Scale @ A3: 1:100,000



Sheet Index



TOOWOOMBA REGIONAL



REGIONAL COUNCIL

SFM4B Strategic Framework - Sustaining the natural environment - Landscape map

Sustaining the environment

Landscape features

- Scenic Landscape Areas
- Viewing corridors
- Lockyer Creek water resource catchment
- Mountain range
- Mountain peak
- Waterbodies and wetlands
- Lookouts
- Regional gateway

Cultural heritage parties

- Githabul People (Waringh Waringh)
- Jagera People #2
- Western Wakka Wakka People
- Yuggera Ugarapul People

Other Features

- Major Road
- Railway Network
- Local government boundary
- Watercourse / Waterbody

NOTE

Refer to online or electronic mapping where layers overlap or labels obstruct the data on the map.

MAP INFORMATION

Based on or contains data sourced from the State Government 2023 which gives no warranty in relation to the data (including accuracy, reliability, completeness or suitability) and accepts no liability (including without limitation, liability in negligence) for any loss, damage or costs (including consequential damage) relating to any use of the data.

© Copyright Lockyer Valley Regional Council 2024

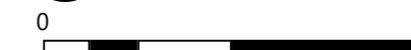
DATA SOURCES

Cadastral data weekly - whole of State Queensland, Rail network - Queensland, Queensland roads and tracks, State controlled roads surveyed centreline - Queensland. © State of Queensland (Department of Resources) 2023.

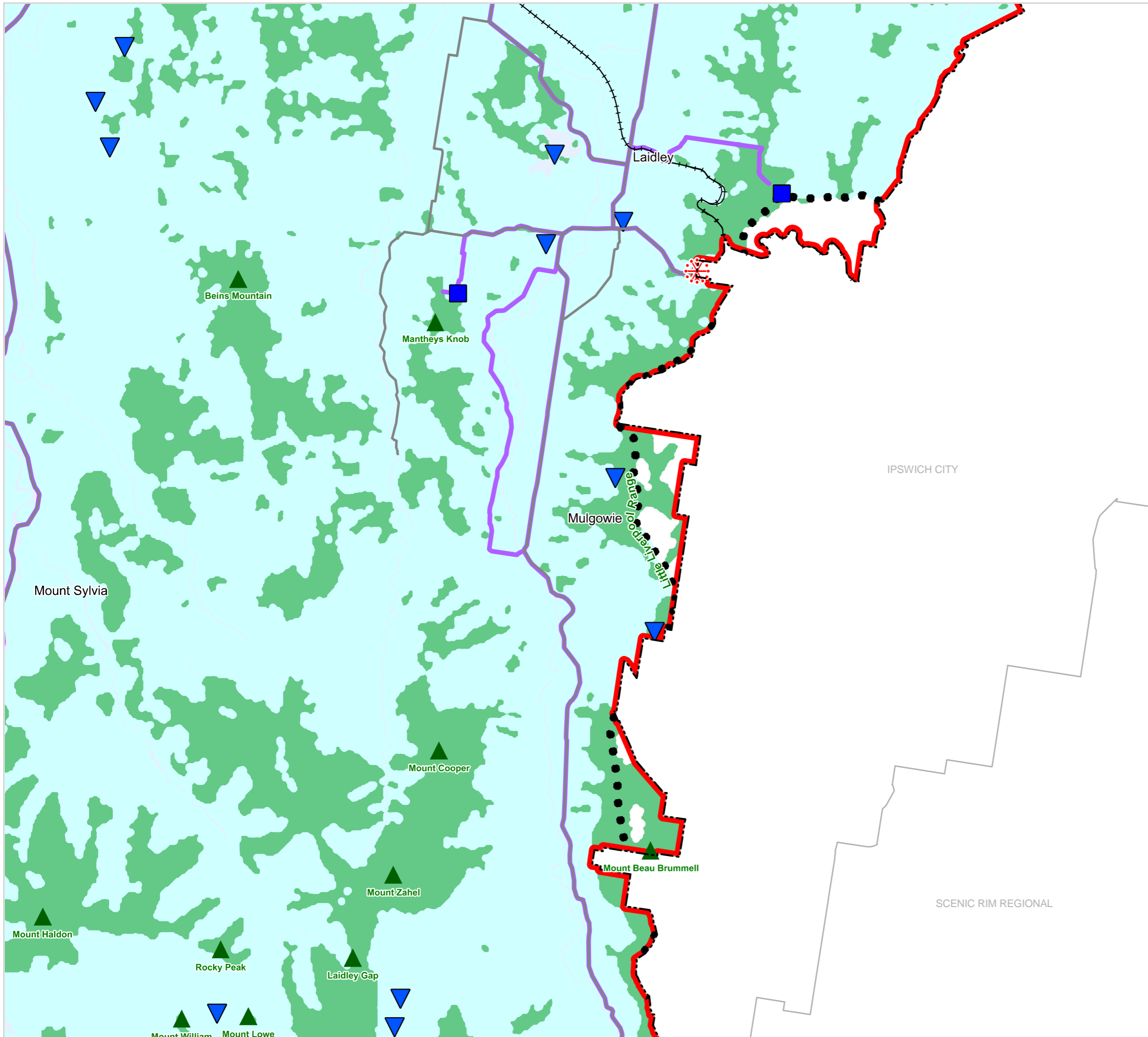
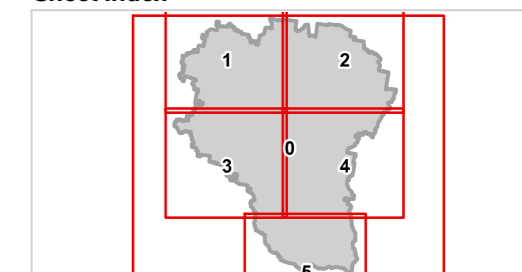
Geocentric Datum of Australia (GDA2020 / MGA zone 56)

Commencement Date: 22 July 2024

Approx Scale @ A3: 1:100,000



Sheet Index





# Lockyer Valley Regional Council Planning Scheme

REGIONAL COUNCIL

## SFM4B Strategic Framework - Sustaining the natural environment - Landscape map

### Sustaining the environment

#### Landscape features

- Scenic Landscape Areas
- Viewing corridors
- Lockyer Creek water resource catchment

- Mountain range
- Mountain peak
- Waterbodies and wetlands
- Lookouts
- Regional gateway

#### Cultural heritage parties

- Githabul People (Waringh Waringh)
- Jagera People #2
- Western Wakka Wakka People
- Yuggera Ugarapul People

#### Other Features

- Major Road
- Railway Network
- Local government boundary
- Watercourse / Waterbody

#### NOTE

Refer to online or electronic mapping where layers overlap or labels obstruct the data on the map.

#### MAP INFORMATION

Based on or contains data sourced from the State Government 2023 which gives no warranty in relation to the data (including accuracy, reliability, completeness or suitability) and accepts no liability (including without limitation, liability in negligence) for any loss, damage or costs (including consequential damage) relating to any use of the data.

© Copyright Lockyer Valley Regional Council 2024

#### DATA SOURCES

Cadastral data weekly - whole of State Queensland, Rail network - Queensland, Queensland roads and tracks, State controlled roads surveyed centreline - Queensland. © State of Queensland (Department of Resources) 2023.

Geocentric Datum of Australia (GDA2020 / MGA zone 56)

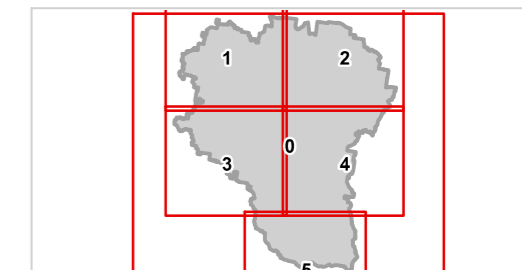
Commencement Date: 22 July 2024

Approx Scale @ A3: 1:100,000

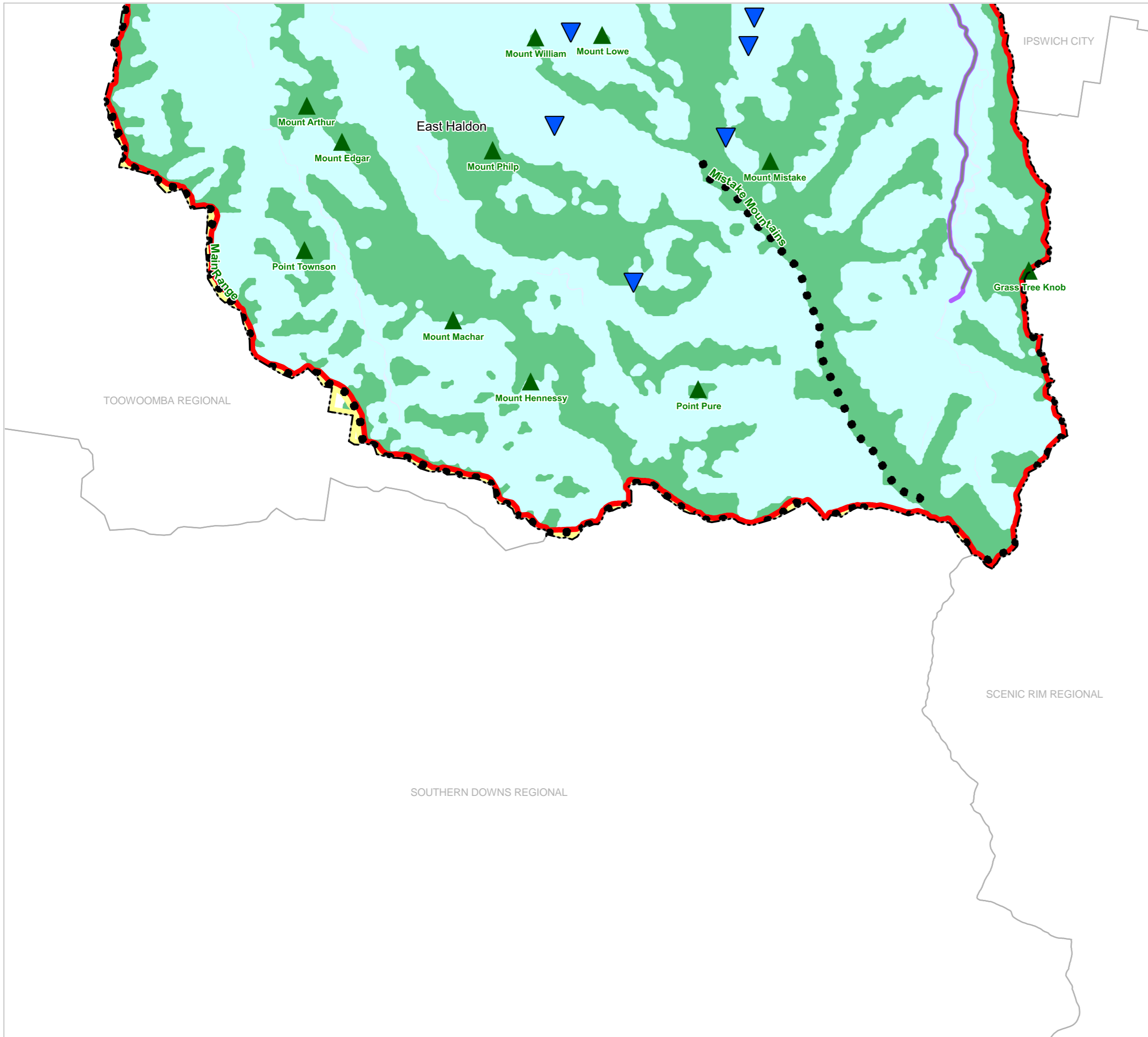
0 5

kilometres

#### Sheet Index



SFM4B Sustaining the natural environment LGA south-05



IPSWICH CITY

TOOWOOMBA REGIONAL

SCENIC RIM REGIONAL

SOUTHERN DOWNS REGIONAL